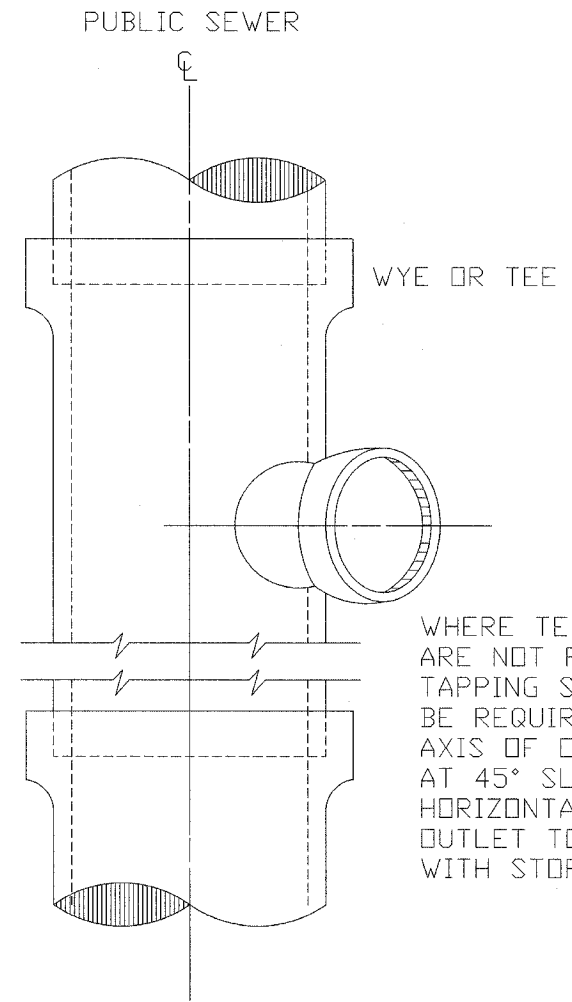


F.A. RTE.	SECTION	COUNTY	TOTAL SHEETS	SHEET NO.
	05-00174-00-BT	ROCK ISLAND	112	85
STA.	TO STA.			
FED. ROAD DIST. NO.	ILLINOIS FED. AID PROJECT			

STANDARD SERVICE CONNECTIONS

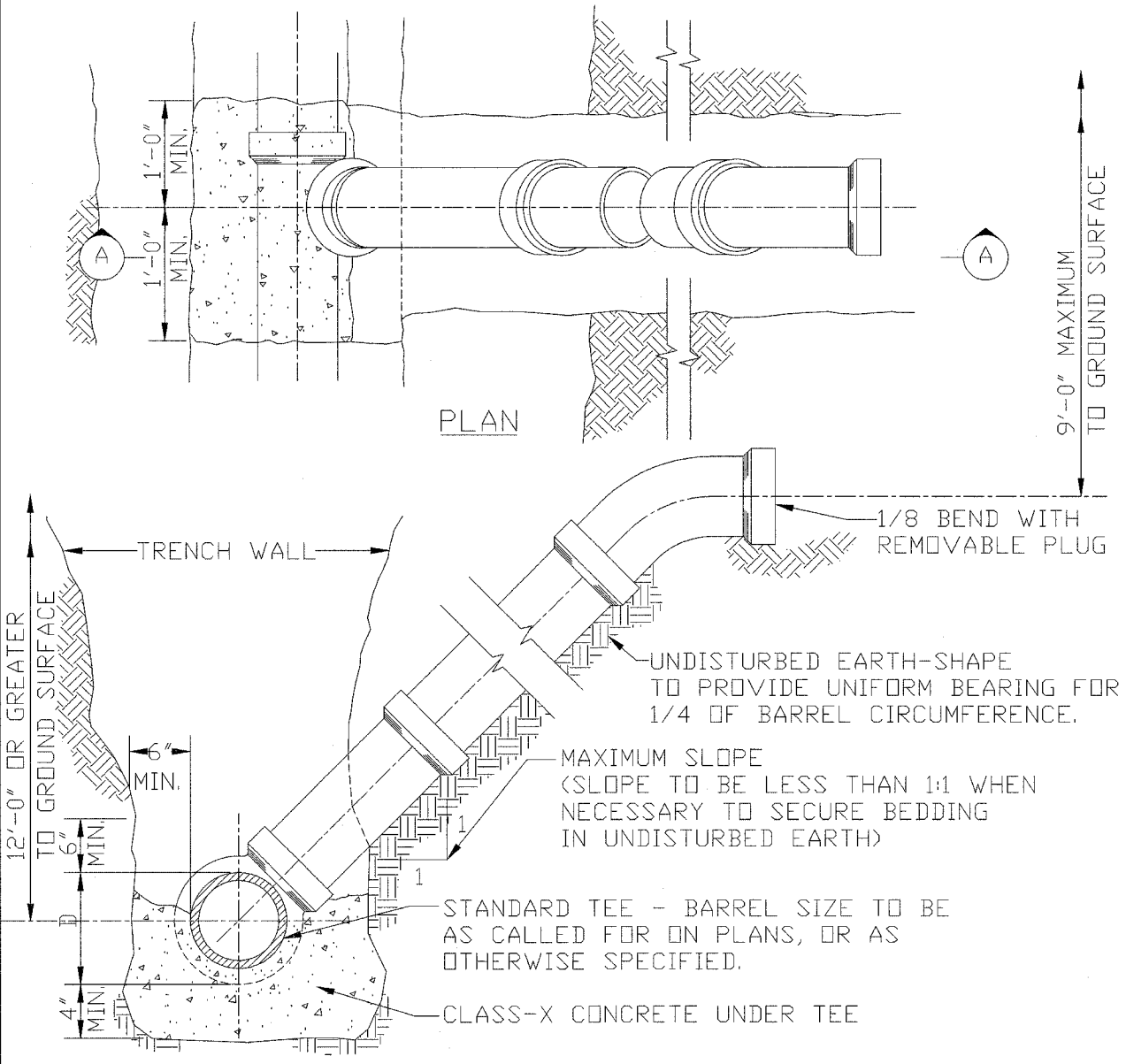


WHERE TEES AND WYES ARE NOT PROVIDED, TAPPING SADDLES WILL BE REQUIRED. AXIS OF OUTLET PLACED AT 45° SLOPE WITH HORIZONTAL. OUTLET TO BE PROVIDED WITH STOPPER.

NOT TO SCALE

STANDARDIZED	PMCJ	09/07/94
REVISION	BY	DATE

STANDARD RISER FOR SERVICE CONNECTION



- NOTES:
- RISERS TO BE CONSTRUCTED WHERE SEWER DEPTH EXCEEDS 12'-0".
 - FOR PIPE MATERIAL AND CONCRETE, SEE STATE STANDARD SPECIFICATIONS FOR WATER & SEWER MAIN CONST.

STANDARD SERVICE CONNECTIONS

CITY OF ROCK ISLAND ENGINEERING DIVISION STANDARD NO. 203

REVISIONS	
NAME	DATE

ILLINOIS DEPARTMENT OF TRANSPORTATION

CITY OF ROCK ISLAND STANDARDS

SCALE: VERT. DATE
HORIZ. DRAWN BY
CHECKED BY

PLOT DATE * DATE *
FILE NAME * FILEL *
PLOT SCALE * SCALEL *
USER NAME * USERL *