

CONTRACT NO. 85431				
F.A. RTE.	SECTION	COUNTY	TOTAL SHEETS	SHEET NO.
TR0683E	04-09116-00-BR	WINNEBAGO	15	1

INDEX OF SHEETS

1. COVER SHEET
2. SUMMARY OF QUANTITIES, GENERAL NOTES, TYPICAL SECTION
3. ROADWAY PLAN AND PROFILE
4. GENERAL PLAN AND ELEVATION
5. P.P.C. DECK BEAM SUPERSTRUCTURE
6. P.P.C. DECK BEAM DETAILS
7. P.P.C. DECK BEAM PILE BENT ABUTMENT
8. P.P.C. DECK BEAM PILE BENT PIER
9. STEEL BRIDGE RAIL, TYPE SM
10. NAME PLATE
11. PILE DETAILS
12. & 13. CROSS SECTIONS
14. WALL ELEVATIONS
15. STANDARDS AND DETAILS
 - 10.2 INLET SPECIAL
 - 13.2 FRAME AND GRATE FOR INLET SPECIAL

STANDARDS

- B.L.R. 22-5 TYPICAL APPLICATION OF TRAFFIC CONTROL DEVICES FOR CONSTRUCTION ON RURAL LOCAL HIGHWAYS
- 602401-01 MANHOLE, TYPE A
 - 604001-02 FRAME AND LID
 - 701901 TRAFFIC CONTROL DEVICES
 - 780001-01 TYPICAL PAVEMENT MARKINGS
 - 720011 METAL POSTS FOR SIGNS, MARKERS & DELINEATORS
 - 728001 TELESCOPING STEEL SIGN SUPPORT
 - 729001 APPLICATIONS OF TYPES A & B METAL POSTS (FOR SIGNS & MARKERS)

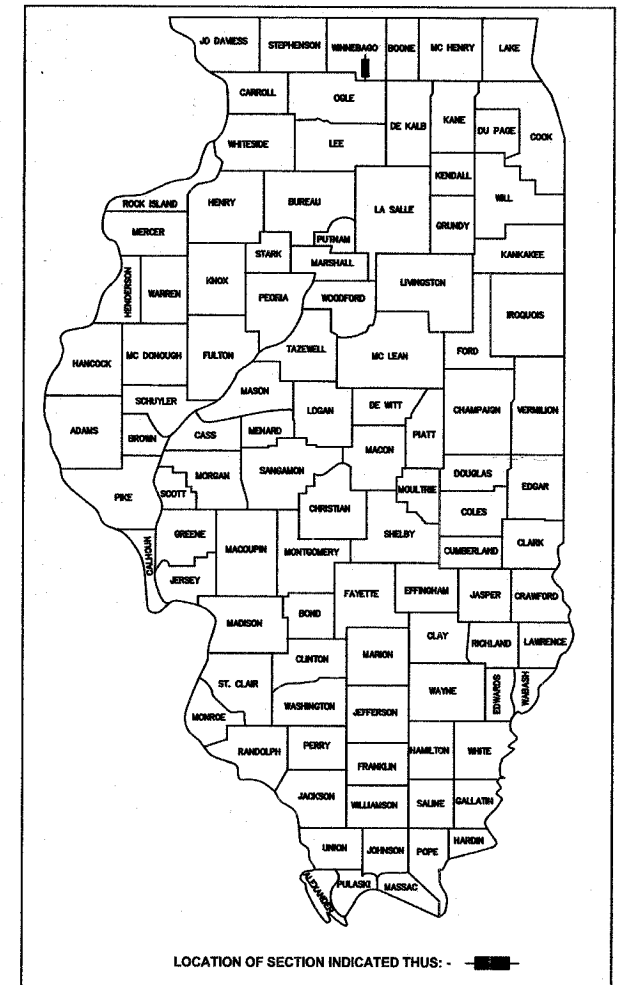
UTILITY CONTACTS

- GAS:**
NICOR
CONSTANCE LANE
UTILITY CONSULTANT
1844 FERRY ROAD
NAPERVILLE, ILLINOIS 60563-9600
PHONE: (630) 388-3830
FAX: (630) 983-4028
- ELECTRIC:**
COMED
MIKE LENOX
123 ENERGY AVENUE
ROCKFORD, ILLINOIS 61109
(815) 490-2869
- CABLE TV:**
COMCAST
MICHAEL OWENS
4450 KISHWAUKEE STREET
ROCKFORD, ILLINOIS 61109
- TELEPHONE:**
ATT
STEVE STULL
2404 8th AVENUE
ROCKFORD, ILLINOIS 61108
(815) 394-7276
- WATER:**
CITY OF ROCKFORD
MARCY LEACH
425 E. STATE STREET
ROCKFORD, ILLINOIS 61104
(815) 967-6740
- SEWER:**
ROCK RIVER WATER RECLAMATION DISTRICT
MICHAEL OLSON, P.E.
3333 KISHWAUKEE STREET
P.O. BOX 7480
ROCKFORD, ILLINOIS 61126-7480
(815) 387-7660

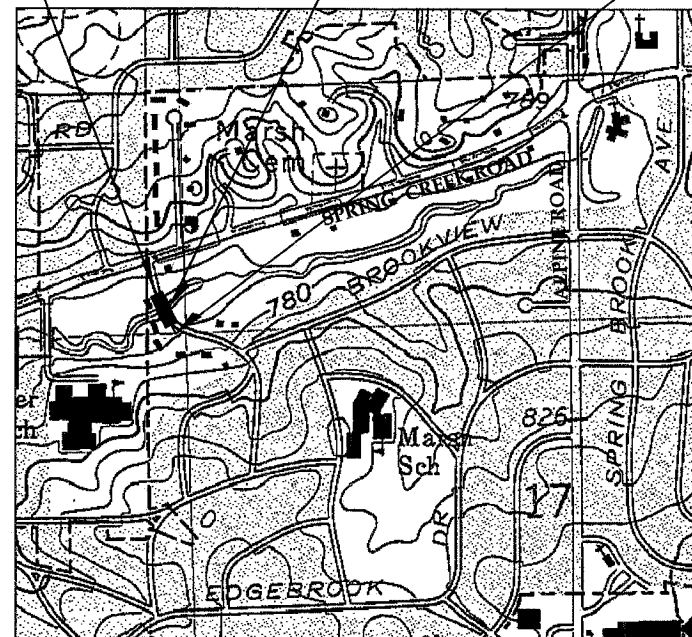
**STATE OF ILLINOIS
DEPARTMENT OF TRANSPORTATION
DIVISION OF HIGHWAYS**

**PLANS FOR PROPOSED
TOWNSHIP BRIDGE PROGRAM
BROOKVIEW ROAD BRIDGE
FEDERAL-AID BRRP PROJECT**

**TR 683 (BROOKVIEW ROAD)
SECTION 04-09116-00-BR
PROJECT NO BROS - 201 (25)
ROCKFORD ROAD DISTRICT
WINNEBAGO COUNTY
JOB NO. C - 92 - 063 - 08**



IMPROVEMENT BEGINS STATION 12+36.00 PROJECT LOCATION IMPROVEMENT ENDS STATION 14+02.00



LOCATION PLAN
PROJECT LENGTH : 166.0 FT (0.031 MI.)

EXISTING STRUCTURE:

S.N. 101-3061; Built in 1950; three span bridge that is 46 ft long with steel beam spans varying from 13.1 ft to 14.6 ft long with two 12-inch thick concrete piers. The reinforced concrete deck with bituminous overlay is 24.2 feet wide with sub-standard steel railings. The steel beams are supported at the structure limits by limestone abutments with concrete caps.

PROPOSED IMPROVEMENT:

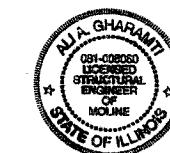
SN 101-3096;
The proposed structure is a two span precast prestressed concrete deck beam (11") bridge on closed pile bent abutments. The proposed cross section is 30' - 4" out-to-out of deck and face-to-face of bridge rail. The proposed total length is 50' - 7" back-to-back of abutments.



J.U.L.I.E.
JOINT UTILITY LOCATION INFORMATION FOR EXCAVATION
1-800-892-0123

CONTRACT NO. 85431

BROOKVIEW ROAD FUNCTIONAL CLASSIFICATION : URBAN TWO-LANE LOCAL ROAD ADT = 550 (2004); 1% TRUCKS



ALI A. GHARAMTI, P.E., S.E. DATE
IL REGISTRATION #062-046049
EXPIRATION DATE 11/30/09

AGENCY RESPONSIBLE FOR LETTING

Approved MARCH 6, 2008 (date)
Scott A. K... County Engineer
Local Agency Position *County Engineer*

Passed APRIL 1, 2008 (date)
John J. ... District 2 Engineer of Local Roads & Street
District 2 Engineer of Local Roads & Street

Releasing for Bid Based on Limited Review APRIL 1, 2008 (date)
George F. ... Deputy Director of Highways, Region 2 Engineer
Deputy Director of Highways, Region 2 Engineer

**PLAN & PROFILE SCALES 1" = 20' HORIZ. 1" = 5' VER.
CROSS SECTION SCALES 1" = 5' HORIZ. 1" = 5' VER.**



7282 Argus Drive Rockford, Illinois 61107-5837
(815) 398-2332 FAX (815) 398-2496
Design Firm License: Illinois 184-000816
Copyright 2008 By McClure Engineering Associates, Inc.