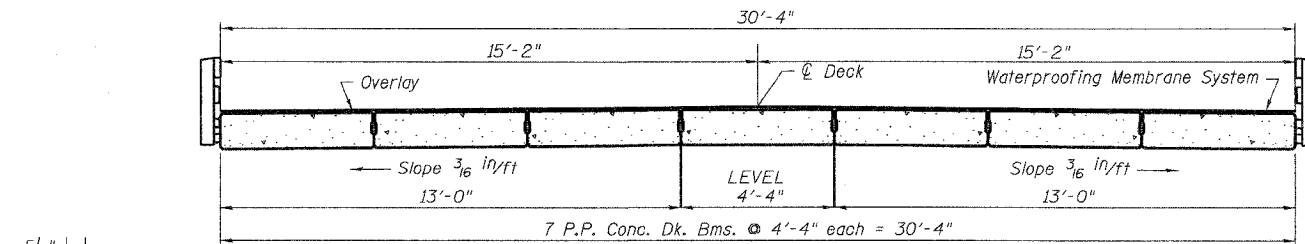
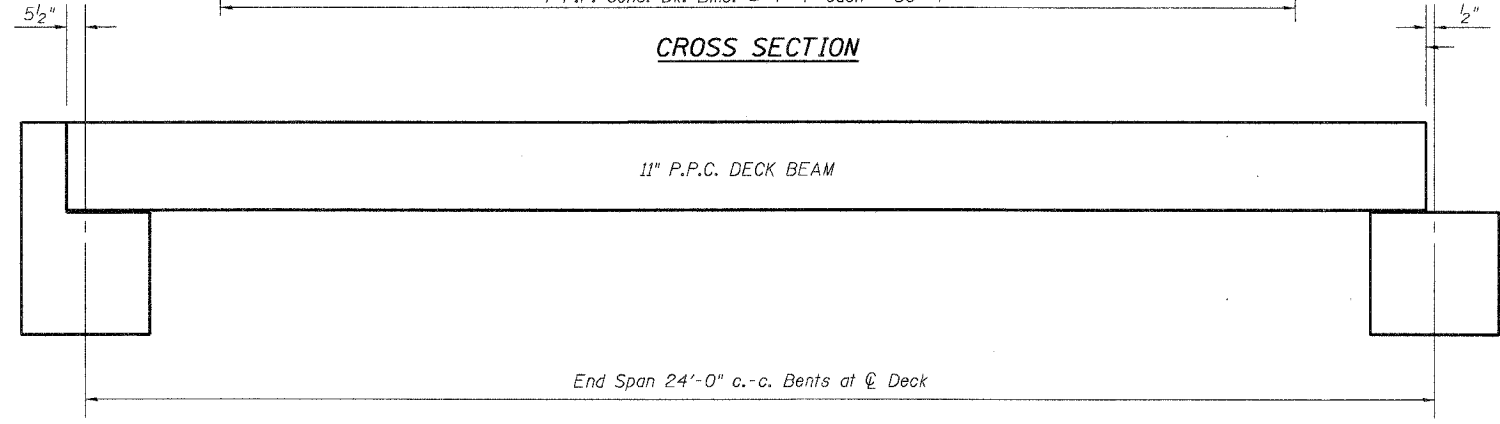


ROUTE NO.	SECTION	COUNTY	SHEET NO.	SHEET
TR0883E	04-09116-00-BR	WINNEBAGO	15	5
ILLINOIS		FED. AID PROJECT		

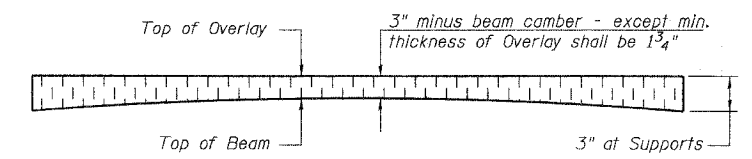
BRIDGE SHEET
2 of 8



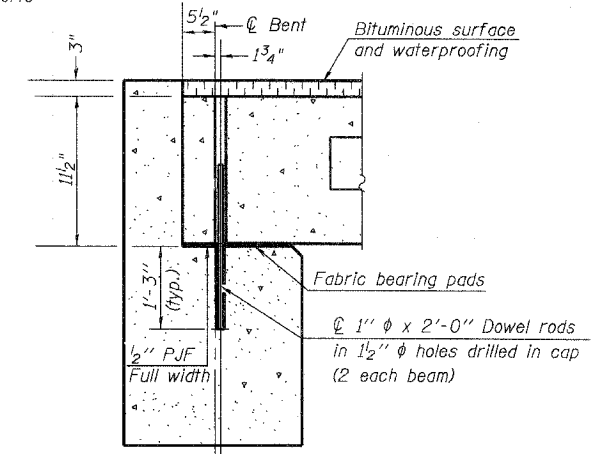
CROSS SECTION



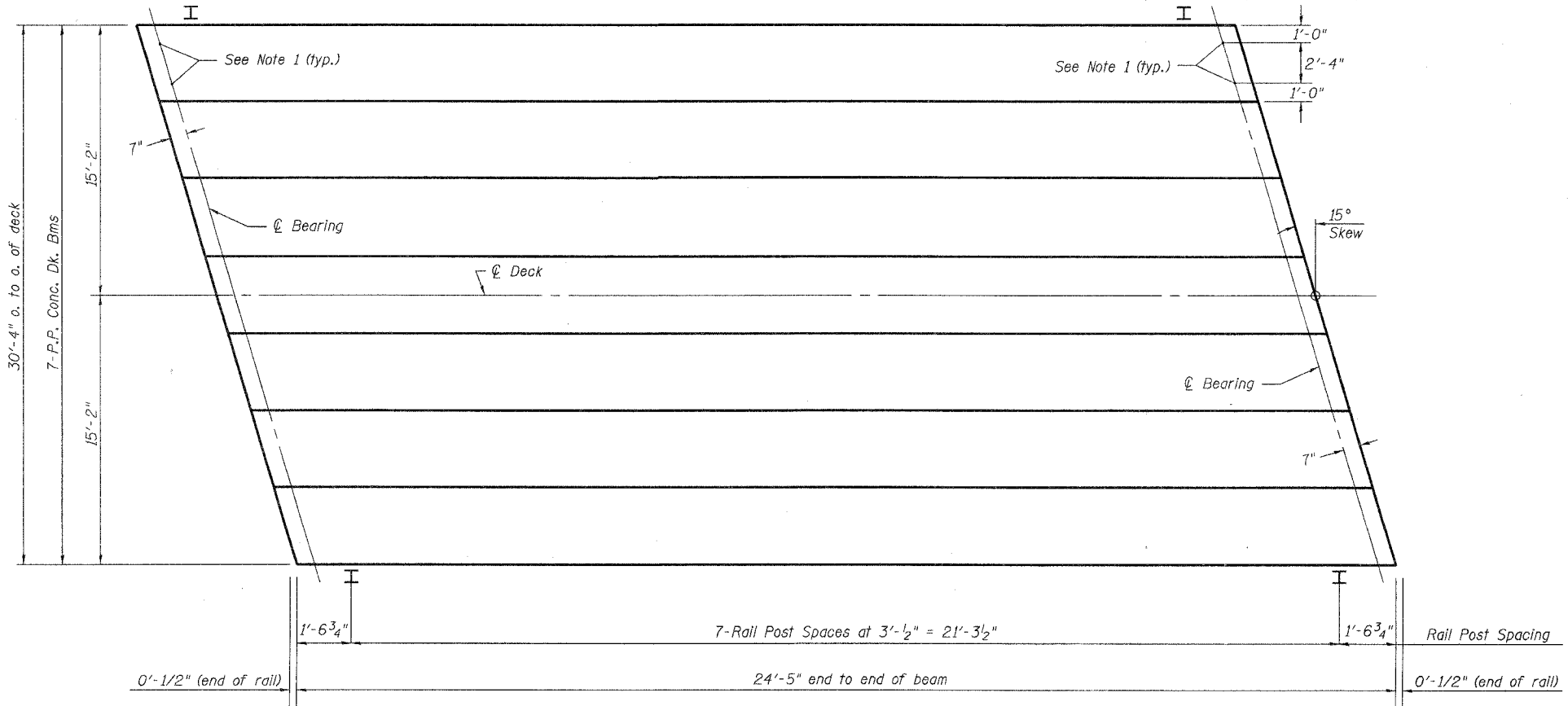
TYPICAL ELEVATIONS



PROFILE OF OVERLAY



SECTION THRU ABUTMENTS
(along centerline of beams)



PLAN

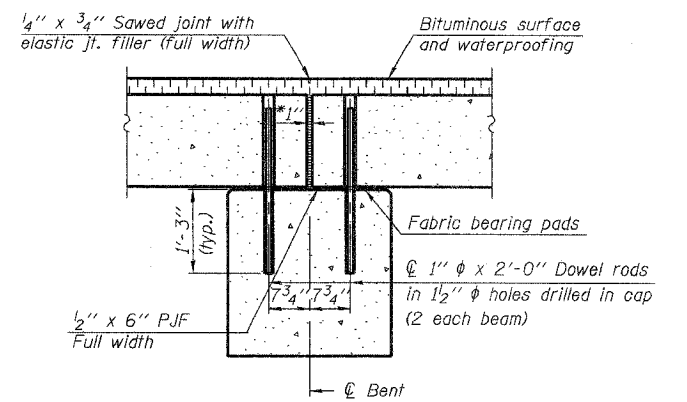
NOTES

1. After beams have been erected, holes shall be drilled into substructure and anchor dowels placed. Dowel holes shall be filled with non-shrink grout to top of beam and allowed to cure min. 24 hrs. prior to grouting the shear keys.
2. Nominal 1" joint at centerline of Pier shall be filled with non-shrink grout.
3. Longitudinal keys shall be grouted.

QUANTITIES FOR ONE SPAN

Item	Unit	Total
P.P. Conc. Dk. Bm. 11" Dp.	Sq. Ft.	742
Steel Railing	Ft.	49
Waterproofing Membrane System	Sq. Yds.	82.5
Portland Cement Mortar Fairing Course	Ft.	147

Note: Quantity of Overlay for One Span = 14.2 Tons



SECTION THRU FIXED PIER
(along centerline of beams)

*1" Jt. shall be filled with non-shrink grout. 1" dimension may vary to accommodate tolerance in beam lengths.

P.P.C. DECK BEAM SUPERSTRUCTURE

**BROOKVIEW ROAD BRIDGE
OVER SPRING CREEK
ROCKFORD ROAD DISTRICT
WINNEBAGO COUNTY
SECTION 04-09116-00-BR**

McClure
Engineering Associates, Inc.
7282 Argus Drive
Rockford, Illinois 61107-5837
(815) 398-2532 FAX (815) 398-2496
Design Firm License: Illinois 184-000816
Copyright 2008 By McClure Engineering Associates, Inc.