

C.H.	SECTION	COUNTY	TOTAL SHEETS	SHEET NO.
23	06-00414-00 BR	WINNEBAGO	10	1
STA. 14+30		TO STA. 16+67		
FED. ROAD DIST. NO.		ILLINOIS	FED. AID PROJECT	

**INDEX OF SHEETS**

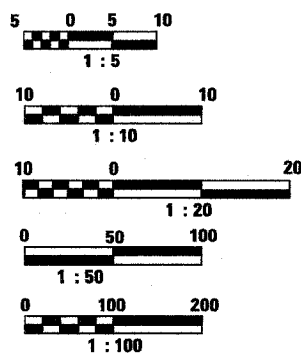
SHEET NO.	DESCRIPTION
1	TITLE SHEET
2	GENERAL NOTES, SUMMARY OF QUANTITIES, EARTHWORK SCHEDULE AND ALIGNMENT & TIES
3	TYPICAL SECTIONS
4	DETOUR PLAN
5	PLAN AND PROFILE
6	GENERAL PLAN AND ELEVATION
7	FOOTING PLAN AND DETAILS
8-10	CROSS SECTIONS

**LIST OF STANDARDS**

000001-05	STANDARD SYMBOLS, ABBREVIATIONS AND PATTERNS
280001-04	TEMPORARY EROSION CONTROL SYSTEMS
630001-07	STEEL PLATE BEAM GUARDRAIL
630101-07	GUARDRAIL MOUNTED ON EXISTING CULVERTS
630301-04	SHOULDER WIDENING FOR TYPE 1 (SPECIAL) GUARDRAIL TERMINALS
635006-02	REFLECTOR AND TERMINAL MARKER PLACEMENT
701006-02	OFF-ROAD OPERATIONS
701201-02	LANE CLOSURE, 2 LANE, 2 WAY: DAY ONLY, FOR SPEEDS ≥ 45 MPH
701301-02	LANE CLOSURE, 2 LANE, 2 WAY: SHORT TIME OPERATIONS
701306-01	LANE CLOSURE, 2 LANE, 2 WAY: SLOW MOVING OPERATIONS DAY ONLY FOR SPEEDS ≥ 45 MPH
701311-02	LANE CLOSURE, 2 LANE, 2 WAY: MOVING OPERATIONS- DAY ONLY
701901	TRAFFIC CONTROL DEVICES
720011	METAL POSTS FOR SIGNS, MARKERS AND DELINEATORS
728001	TELESCOPING STEEL SIGN SUPPORT
729001	APPLICATIONS OF TYPES A & B METAL POSTS (FOR SIGNS AND MARKERS)
780001-01	TYPICAL PAVEMENT MARKINGS
BLR 21-7	TYPICAL APPLICATION OF TRAFFIC CONTROL DEVICES FOR CONSTRUCTION ON RURAL LOCAL HIGHWAYS
BLR 22-5	TYPICAL APPLICATION OF TRAFFIC CONTROL DEVICES FOR CONSTRUCTION ON LOCAL HIGHWAYS (TWO LANE, TWO WAY RURAL TRAFFIC) (ROAD CLOSED TO THRU TRAFFIC)

**TRAFFIC DATA**  
 3R GUIDELINES  
 HIGHWAY CLASSIFICATION: RURAL COLLECTOR  
 ADT: 350 (2008) 1% TRUCKS  
 DESIGN SPEED: 40 mph  
 CLOSED ROAD ADT: 20

**ENGLISH RATIOS**



FULL SIZE PLANS HAVE BEEN PREPARED USING STANDARD ENGINEERING SCALES, REDUCED SIZED PLANS WILL NOT CONFORM TO STANDARD SCALES, IN MAKING MEASUREMENTS ON REDUCED PLANS, THE ABOVE SCALES MAY BE USED.

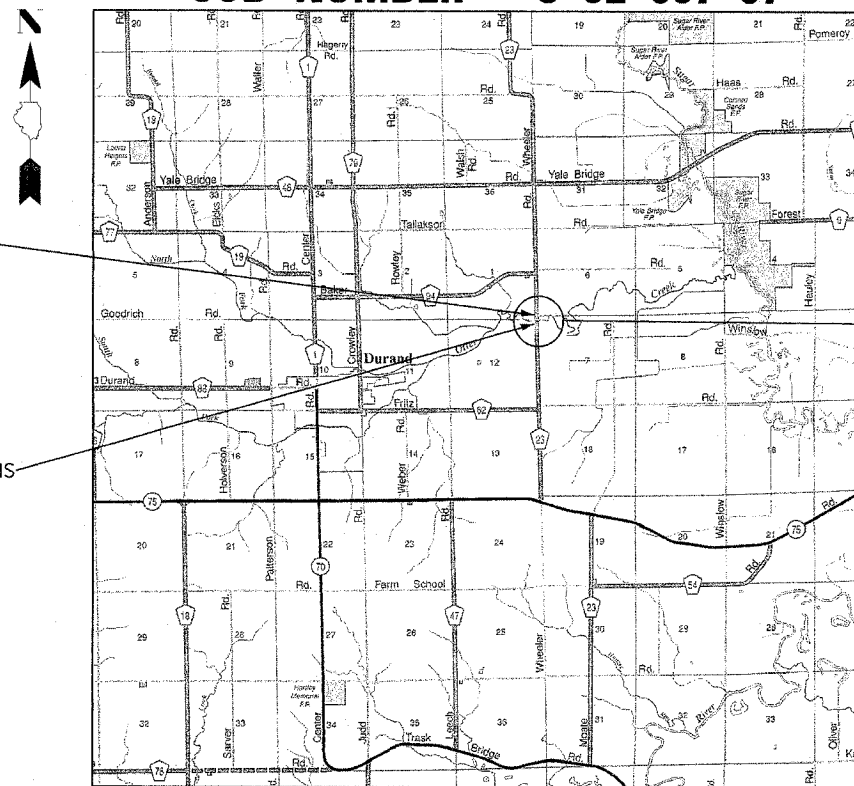
J.U.L.I.E.  
 JOINT UTILITY LOCATION INFORMATION FOR EXCAVATION  
 1-800-892-0123

**CONTRACT NO. 85433**

**STATE OF ILLINOIS  
 DEPARTMENT OF TRANSPORTATION  
 DIVISION OF HIGHWAYS**

**PLANS FOR PROPOSED  
 BRIDGE REHABILITATION PROJECT  
 (CH 23) WHEELER ROAD  
 OVER OTTER CREEK**

**STRUCTURE NO. SN 101-3097  
 WINNEBAGO COUNTY  
 SECTION NO. 06-00414-00-BR  
 PROJECT BROS-201(23)  
 JOB NUMBER - C-92-067-07**



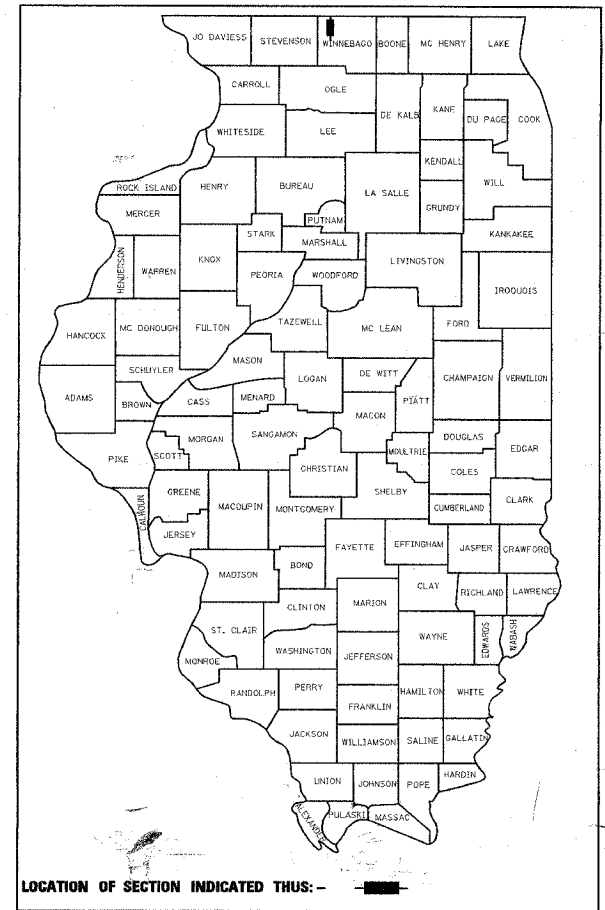
IMPROVEMENT ENDS  
 STATION 16+67

IMPROVEMENT BEGINS  
 STATION 14+30

PROPOSED IMPROVEMENT  
 3 SIDED CONCRETE  
 STRUCTURE  
 PRECAST CONCRETE  
 WING WALLS  
 PRECAST CONCRETE  
 SUBSTRUCTURE

R.I.E., 7TH P.M.  
**LOCATION MAP**  
 (NOT TO SCALE)

WHEELER ROAD NET PROJECT LENGTH 237 FEET (0.045 MI.)  
 WHEELER ROAD GROSS PROJECT LENGTH 237 FEET (0.045MI.)



LOCATION OF SECTION INDICATED THIS: -

STATE OF ILLINOIS  
 DEPARTMENT OF TRANSPORTATION  
 DIVISION OF HIGHWAYS

Approved April 14, 2008  
*[Signature]*  
 Local Agency, Position, County Required

Passed April 22, 2008

Releasing for Bid  
 Based on Limited  
 Review April 22, 2008

*[Signature]*  
 Deputy Director of Highways, Region 1 Engineer

**PRINTED BY THE AUTHORITY  
 OF THE STATE OF ILLINOIS**

DICK M. TERRELL  
 State of Illinois  
 Professional Engineer  
 No. 062-059235-1-10-08  
 EXP. 11/30/09

HOMER L.  
**CHASTAIN**  
 & ASSOCIATES  
 CONSULTING ENGINEERS

PHONE: 815-489-0090  
 FAX: 815-489-0095  
 LICENSE NO. 184.001397