



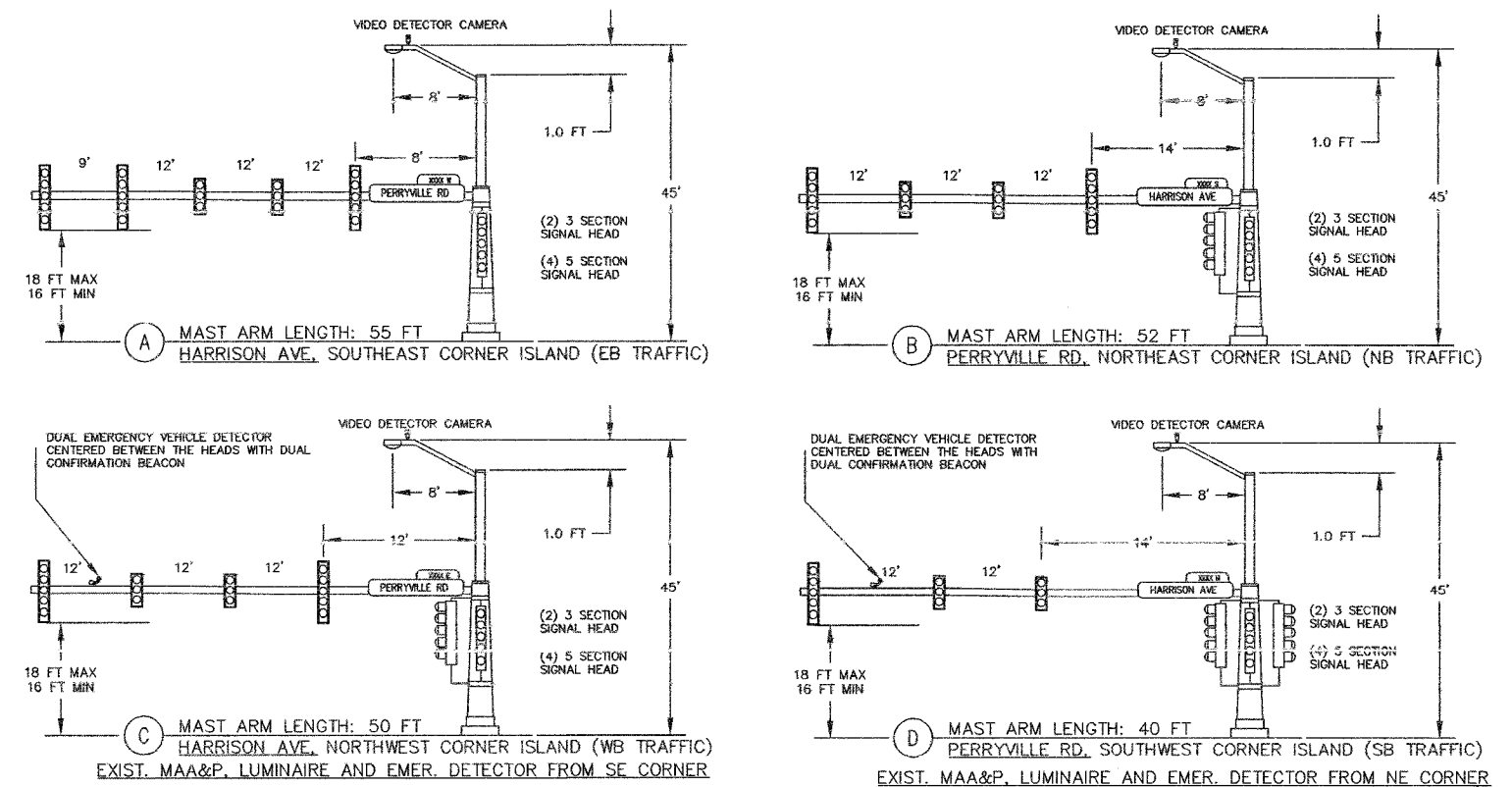
Item No	Item	Unit	QTY
81012700	CONDUIT IN TRENCH, 2 1/2" DIA., PVC	FOOT	44.00
81021340	CONDUIT PUSHED, 2 1/2" DIA., PVC	FOOT	39.00
81021370	CONDUIT PUSHED, 4" DIA., PVC	FOOT	210.00
81400100	HANDHOLE	EACH	3.00
81400200	HEAVY-DUTY HANDHOLE	EACH	1.00
81702110	ELECTRIC CABLE IN CONDUIT, 600V(XLP-TYPE USE) 1/C NO. 10	FOOT	2,624.00
81900200	TRENCH AND BACKFILL FOR ELECTRICAL WORK	FOOT	44.00
82103400	LUMINAIRE, SODIUM VAPOR, HORIZONTAL MOUNT, PHOTO-CELL CONTROL, 400 WATT	EACH	2.00
86200200	UNINTERRUPTIBLE POWER SUPPLY	EACH	1.00
87301245	ELECTRIC CABLE IN CONDUIT, SIGNAL NO. 14 5C	FOOT	2,656.00
87301255	ELECTRIC CABLE IN CONDUIT, SIGNAL NO. 14 7C	FOOT	5,440.00
87500600	TRAFFIC SIGNAL POST, 10 FT.	EACH	1.00
87702985	STEEL COMBINATION MAST ARM ASSEMBLY AND POLE 52 FT.	EACH	1.00
87703000	STEEL COMBINATION MAST ARM ASSEMBLY AND POLE 55 FT.	EACH	1.00
87800100	CONCRETE FOUNDATION, TYPE A	FOOT	3.00
87800415	CONCRETE FOUNDATION, TYPE E, 36-INCH DIAMETER	FOOT	58.00
87900200	DRILL EXISTING HANDHOLE	EACH	3.00
88040090	SIGNAL HEAD, POLYCARBONATE, LED, 1-FACE, 3-SECTION, MAST ARM MOUNTED	EACH	8.00
88040150	SIGNAL HEAD, POLYCARBONATE, LED, 1-FACE, 5-SECTION, BRACKET MOUNTED	EACH	1.00
88040160	SIGNAL HEAD, POLYCARBONATE, LED, 1-FACE, 5-SECTION, MAST ARM MOUNTED	EACH	8.00
88040290	SIGNAL HEAD, POLYCARBONATE, LED, 2-FACE, 5-SECTION, BRACKET MOUNTED	EACH	2.00
88040360	SIGNAL HEAD, POLYCARBONATE, LED, 3-FACE, 5-SECTION, BRACKET MOUNTED	EACH	1.00
88200100	TRAFFIC SIGNAL BACKPLATE	EACH	16.00
89000200	TEMPORARY TRAFFIC SIGNAL INSTALLATION	L SUM	1.00
89501300	RELOCATE EXISTING MAST ARM ASSEMBLY AND POLE	EACH	2.00
89501400	RELOCATE EXISTING EMERGENCY VEHICLE PRIORITY SYSTEM, DETECTOR UNIT	EACH	2.00
89502200	MODIFY EXISTING CONTROLLER	EACH	1.00
89502300	REMOVE ELECTRIC CABLE FROM CONDUIT	L SUM	1.00
89502380	REMOVE EXISTING HANDHOLE	EACH	2.00
89502385	REMOVE EXISTING CONCRETE FOUNDATION	EACH	4.00
89502375	REMOVE EXISTING TRAFFIC SIGNAL EQUIPMENT	EACH	4.00
X0320837	EMERGENCY VEHICLE PRIORITY SYSTEM DUAL DETECTOR UNIT	EACH	2.00
X0324134	BATTERY BACKUP SYSTEM WITH CABINET	EACH	1.00
X8730027	ELECTRIC CABLE IN CONDUIT, GROUNDING, NO. 6 1C	FOOT	717.00
XX001909	ELECTRIC CABLE IN CONDUIT NO. 20 3/C	FOOT	1,148.00
XX003583	VIDEO ELECTRIC CABLE IN CONDUIT, NO. 16 3/C	FOOT	1,312.00
XX003584	VIDEO BELDEN 8281 COAXIAL CABLE IN CONDUIT	FOOT	1,312.00
XX003962	VIDEO VEHICLE DETECTION SYSTEM	L SUM	1.00

GENERAL NOTES

- CALL J.U.L.L.E. AT LEAST 48 HRS PRIOR TO CONSTRUCTION (800) 892-0123
- ALL UTILITIES SHALL BE LOCATED IN THE FIELD PRIOR TO CONSTRUCTION. NOTIFY THE ENGINEER OF ANY CONFLICTS PRIOR TO CONSTRUCTION
- ALL SIGNING, STRIPING, TRAFFIC SIGNALS AND TRAFFIC CONTROL DEVICES DURING CONSTRUCTION SHALL CONFORM TO THE MANUAL ON UNIFORM TRAFFIC CONTROL DEVICES (M.U.T.C.D.) CURRENT EDITION.
- ALL NEW CONSTRUCTION SHALL CONFORM TO THE STANDARDS OF THE ILLINOIS DEPARTMENT OF TRANSPORTATION. ALL TRAFFIC SIGNAL EQUIPMENT IS TO BE SPUN ALUMINUM OR GALVANIZED FINISH EXCEPT FOR SIGNAL HEADS.
- ALL LENSES SHALL BE 12".
- EAGLE BRAND EQUIPMENT MUST BE USED FOR COMPATIBILITY WITH EXISTING COUNTY EQUIPMENT.
- MAST ARM SHALL BE DESIGNED TO ACCOMMODATE 18"X 72" STREET NAME SIGN. ALL TRAFFIC SIGNAL MOUNTED SIGNS TO BE INSTALLED BY THE CONTRACTOR.
- CONTRACTOR SHOULD CHECK THE CRITICAL DIMENSIONS OF THE NEW TYPE E FOUNDATIONS, SUCH AS ANCHOR BOLT SIZE AND BOLT CIRCLE WITH THE REUSED COMBINATION MAST ARM ASSEMBLIES BEFORE THE CONSTRUCTION OF THE NEW TYPE E FOUNDATIONS.
- SALVAGE EXISTING STREET NAME SIGNS FROM EXISTING MAST ARMS AND REUSE ON NEW MAST ARMS, COST INCIDENTAL TO RELOCATE EXIST MAA&POLE.

MAST ARM EQUIPMENT MOUNTING DETAIL

NO SCALE



STANDARDS

209-814001-01	HANDHOLES
209-857001	STD PHASE DESIGNATION DIAGRAMS & PHASE SEQUENCES
209-862001	UNINTERRUPTIBLE POWER SUPPLY (UPS)
209-873001-01	TRAFFIC SIGNAL GROUNDING & BONDING
209-877011-03	STEEL COMB MAST ARM ASSEMBLY & POLE
209-878001-06	CONCRETE FOUNDATION DETAILS
209-880006	TRAFFIC SIGNAL MOUNTING DETAILS