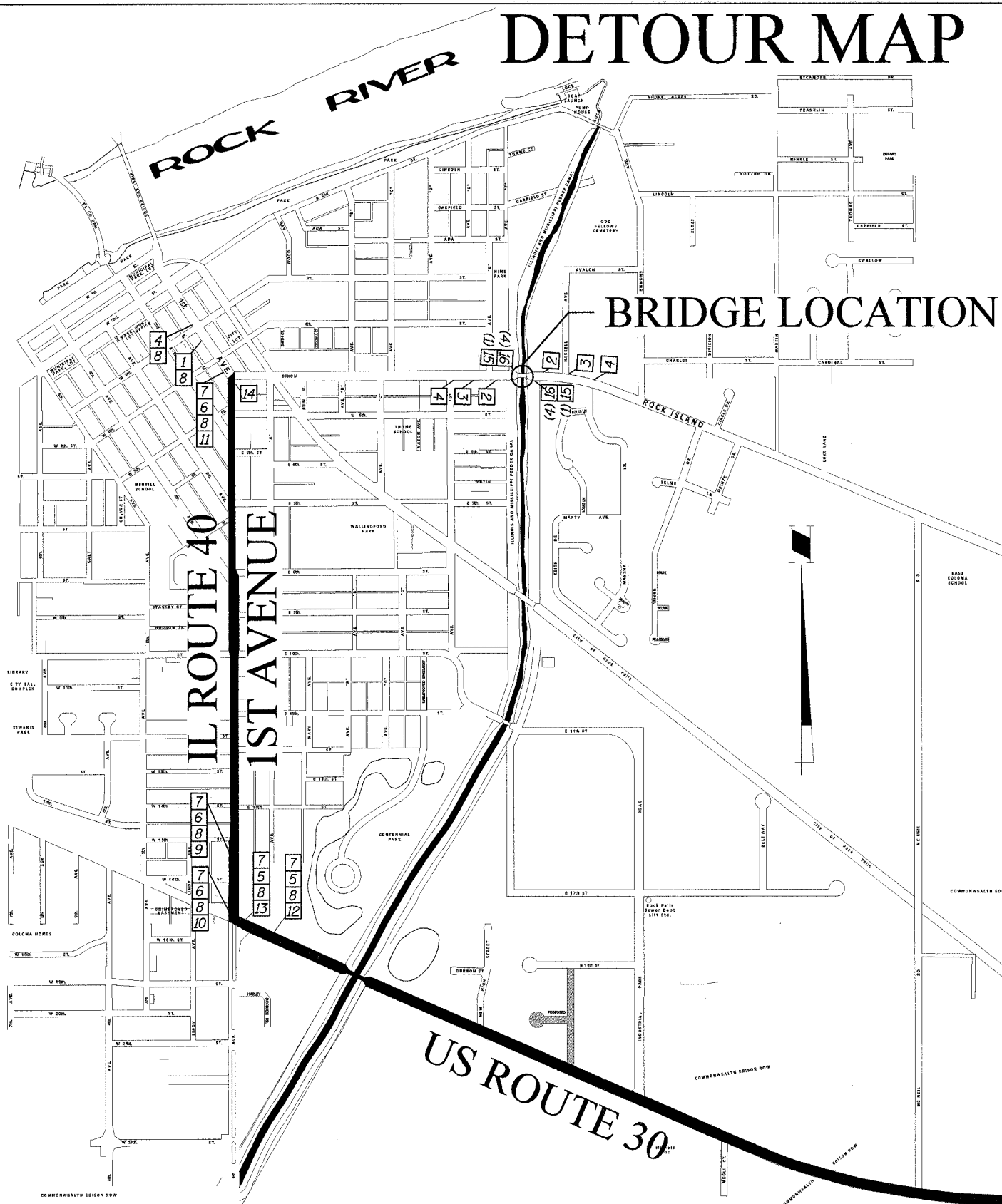


DETOUR MAP



TYPICAL INTERSECTION AT POINT OF DETOUR

- LEGEND**
- 3 48" X 48" CONSTRUCTION SIGN WITH AMBER FLASHING LIGHT NUMBER DENOTES SIGN TYPE
 - 4 44-9 SERIES DETOUR SIGN WITH DIRECTION AND ROAD NAME PLATES NUMBER DENOTES TYPE
 - 5 OTHER DETOUR SIGNS, NUMBER DENOTES TYPE

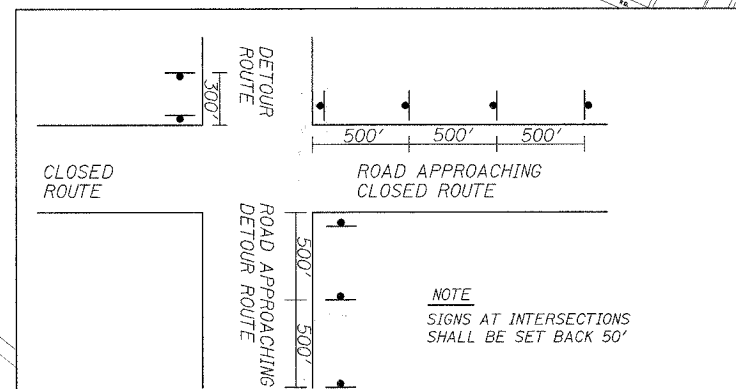
SPECIAL DETOUR NOTES

1. THE CONTRACTOR SHALL PAY PARTICULAR ATTENTION TO THE DETOUR GENERAL NOTES. SEE SHEET 7 FOR THE DETOUR GENERAL NOTES.
2. SEE SHEET 7 FOR INFORMATION ON THE DESIGN AND LOCATION OF THE DETOUR INFORMATION SIGNS.
3. ALL DETOUR SIGNS, SHALL BE COMPLETELY COVERED AT ALL TIMES THE ROADWAY IS NOT CLOSED TO TRAFFIC

SIGN LEGEND

- 1 DETOUR AHEAD W20-2, 48" X 48" WITH AMBER FLASHING LIGHT. (2 REQ'D)
- 2 BARRICADE AHEAD W21-100, 48" X 48" WITH AMBER FLASHING LIGHT. (2 REQ'D)
- 3 ROAD CLOSED 1000 FT W20-3, 48" X 48" WITH AMBER FLASHING LIGHT. (2 REQ'D)
- 4 ROAD CLOSED AHEAD W20-3, 48" X 48" WITH AMBER FLASHING LIGHT. (6 REQ'D)
- 5 WEST M3-4, 24" X 12" (6 REQ'D)
- 6 EAST M3-2, 24" X 12" (5 REQ'D)
- 7 DETOUR M4-B, 24" X 12" (11 REQ'D)
- 8 DIXON AVENUE M1-100 (15 REQ'D)
- 9 M5-1 L, 21" X 15" (3 REQ'D)
- 10 M6-1, 21" X 15" (3 REQ'D)
- 11 M5-2, 21" X 15" (1 REQ'D)
- 12 M5-1 R, 21" X 15" (2 REQ'D)
- 13 M6-1, 21" X 15" (2 REQ'D)
- 14 END DETOUR M4-8A, 24" X 18" (2 REQ'D)
- 15 ROAD CLOSED R11-2, 48" X 30" (2 REQ'D)
- 16 TYPE III BARRICADES WITH TWO FLASHING LIGHTS EACH. (9 REQ'D)
- 17 2 MILES W16 - 3A(O) - 3612

PROBABLE SPACING AS DIRECTED BY THE ENGINEER



PLAN	DATE
SURVEYED	BY
PLOTTED	
NOTED	
FILED	
FILE NAME	

PROFILE	DATE
SURVEYED	BY
PLOTTED	
NOTED	
FILED	
FILE NAME	

S:\STRUCT\1093D07CITYOF ROCKFALLS\PROJECT DEVELOPMENTREPORT\DETOUR MAP.DGN

FILE NAME =	USER NAME = #USER#	DESIGNED -	REVISED -
#FILE#		DRAWN -	REVISED -
	PLOT SCALE = #SCALE#	CHECKED -	REVISED -
	PLOT DATE = #DATE#	DATE -	REVISED -

WILLETT, HOFMANN & ASSOCIATES, INC
CONSULTING ENGINEERS
 DIXON, IL

DETOUR MAP	
SCALE: _____	SHEET NO. ___ OF ___ SHEETS
STA. _____ TO STA. _____	

F.A. RTE.	SECTION	COUNTY	TOTAL SHEETS	SHEET NO.
5560	01-00125-00-BR	WHITESIDE	17	6
FED. ROAD DIST. NO. _____		ILLINOIS FED. AID PROJECT		
CONTRACT NO. _____				