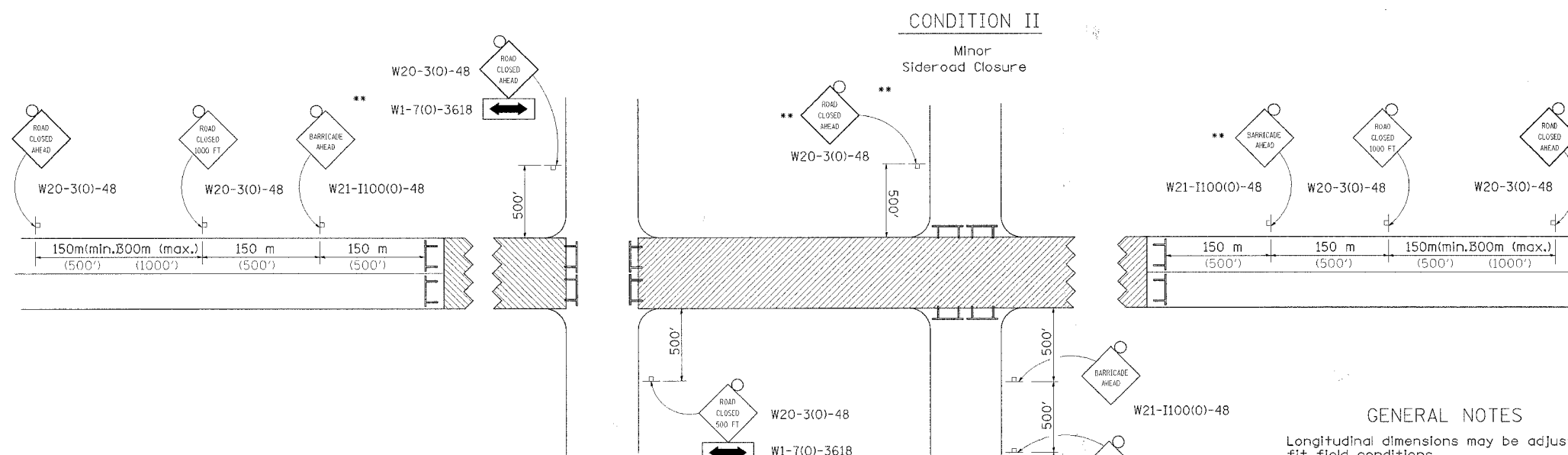
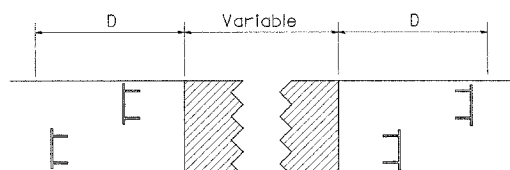


TRAFFIC CONTROL FOR ROAD CLOSURE



ROAD CLOSED TO THRU TRAFFIC BARRICADE SET UP



Type III Barricades and R11-4-4830 signs shall be as shown in "Road Closed To All Thru Traffic" detail on Highway Standard 701901. If the distance "D" exceeds 600 m (2000') an additional set of barricades and R11-4-4830 shall be placed at each end of the work area.

SYMBOLS

- Work area
- Type III Barricade with Flashers
- Sign with flashing light

GENERAL NOTES

Longitudinal dimensions may be adjusted to fit field conditions.

When speed limit is less than 45mph, change sign spacing to 250' and change ROAD CLOSED 1000 FT to ROAD CLOSED 500 FT.

Side roads requiring all three signs as shown in CONDITION I (Major Sideroad Closure), shall be listed in the special provision.

** Where local access is to be maintained, barricades are to be set up as shown in Road Closed to thru traffic.

Type III Barricades and R11-2-4830 signs shall be as shown in "Road Closed To All Traffic" detail on Highway Standard 701901.

All dimensions are in millimeters (inches) unless otherwise shown.

TYPICAL APPLICATION FOR ROAD CLOSURE

DATE	BY

PLAN

DESIGNED	BY
CHECKED	DATE
PLOTTED	
ALIGNED	
NOTES CHECKED	
FILE NAME	
PROJECT NO.	

PROFILE

DESIGNED	BY
CHECKED	DATE
PLOTTED	
ALIGNED	
NOTES CHECKED	
FILE NAME	
PROJECT NO.	

PLOT DATE * 10/24/04
FILE NAME * P:\FILES\PROJECTS\TRAFFIC CONTROL\TRAFFIC CONTROL.DGN
REFERENCE * 85438

S:\STRUCT\1093007\C1\yofRockFalls\COVER.ETC.DGN

FILE NAME	USER NAME	DESIGNED	REVISED	WILLETT, HOFMANN & ASSOCIATES, INC CONSULTING ENGINEERS DIXON, IL	F.A. RTE.	SECTION	COUNTY	TOTAL SHEETS	SHEET NO.
#FILEL#	#USER#	-	-		5560	01-00125-00-BR	WHITESIDE	-17-	-17-
		DRAWN	REVISID		SCALE: _____ SHEET NO. ____ OF ____ SHEETS		STA. _____ TO STA. _____		
		CHECKED	REVISID		FED. ROAD DIST. NO. _____ ILLINOIS FED. AID PROJECT				
		DATE	REVISID						

TRAFFIC CONTROL FOR ROAD CLOSURE 40.1

REVISED 10-20-04