

ROUTE NO.	SECTION	COUNTY	TOTAL SHEETS	SHEET NO.
T.R. 159	01-1126-00-BR	IROQUOIS	23	1
DOUGLAS ROAD DIST.		ILLINOIS	BROS-075(128)	

CONTRACT NO. 87300

STATE OF ILLINOIS

DEPARTMENT OF TRANSPORTATION

DIVISION OF HIGHWAYS

PLANS FOR PROPOSED HIGHWAY BRIDGE PROGRAM

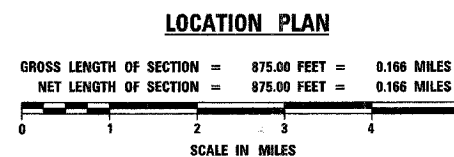
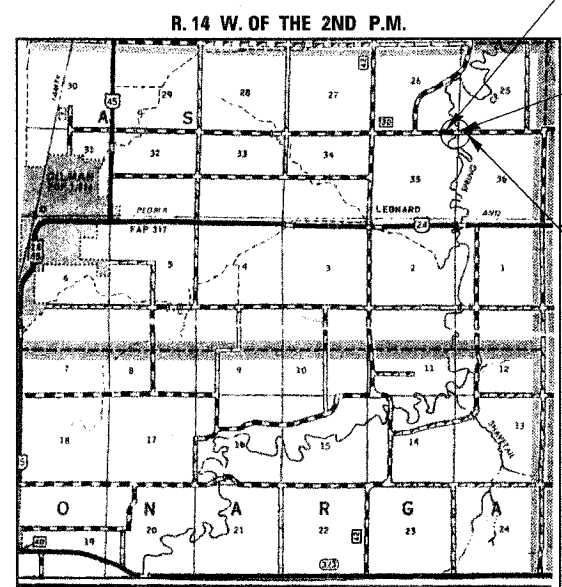
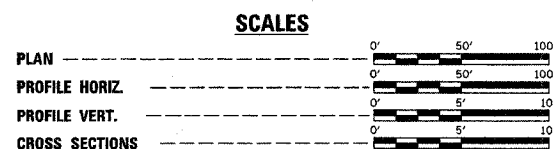
DOUGLAS ROAD DISTRICT
SECTION 01-1126-00-BR
IROQUOIS COUNTY
PROJECT NO. BROS-075(128)
T.R. ROUTE 159
C-93-029-05

SHEET NO.	INDEX OF SHEETS	TITLE
1.	COVER SHEET	
2.	SUMMARY OF QUANTITIES, GENERAL NOTES & TYPICAL SECTIONS	
3.	PLAN AND PROFILE SHEET	
4.-12.	BRIDGE PLANS	
13.-16.	SOIL BORINGS	
17.-22.	STATION CROSS SECTIONS	
23.	EROSION CONTROL PLAN	

STANDARDS:

280001-04
515001-02
630001-07
630301-04

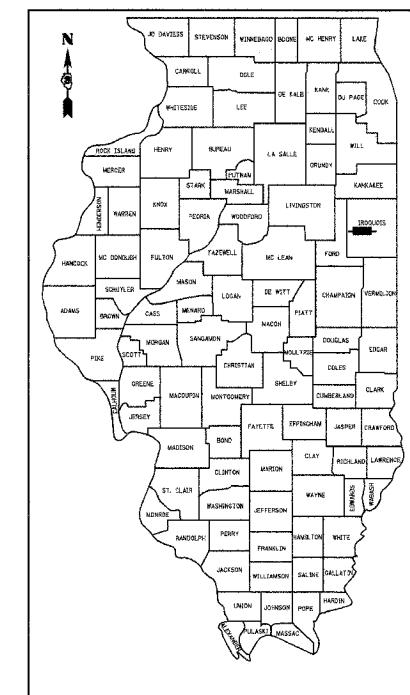
635006-02
667101
701901
BLR 21-7
BLR 27



IMPROVEMENT BEGINS
STA. 10 + 00

STA. 14 + 69.94 - SPECIAL BRIDGE DESIGN
PRECAST PRESTRESSED CONCRETE
DECK BEAM BRIDGE - 4 SPANS AT
60', 60', 80', 60': 30' ROADWAY: SKEW = 45° LT.
EXISTING S.N. 038-4030
PROPOSED S.N. 038-4055

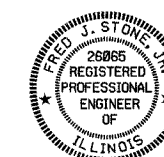
IMPROVEMENT ENDS
STA. 18 + 75



LOCATION OF SECTION INDICATED THUS:

CLASSIFICATION: RURAL TWO-LANE LOCAL ROADS
DESIGN VOLUME: UNDER 250 ADT
CURRENT ADT 81 (2005)
DESIGN SPEED 30 MPH

TOLL FREE JOINT UTILITY LOCATING
INFORMATION FOR EXCAVATORS (J.U.L.I.E.)
TELEPHONE NUMBER 1-800-892-0123



Fred J. Stone, Jr. (11-26-07)
ILLINOIS PROFESSIONAL NO. 26065
EXPIRES 11-30-09

APPROVED	12-11	2007
	<i>Roger Ruffner</i>	
	ROAD DISTRICT COMMISSIONER	
APPROVED	Dec 12	2007
	<i>Jim Am</i>	
	COUNTY ENGINEER	
PASSED	01-22	2008
	<i>Kenneth C. Long</i>	
	DISTRICT THREE ENGINEER OF LOCAL ROADS & STREETS	
RELEASING FOR BID	01-22	2008
BASED ON LIMITED		
REVIEW	<i>George F. Ryan</i>	
	DEPUTY DIRECTOR OF HIGHWAYS, REGION TWO ENGINEER	
	STATE OF ILLINOIS	
	DEPARTMENT OF TRANSPORTATION	

4440 ASH GROVE
SPRINGFIELD, IL 62711
(217) 793-8800
www.fehr-graham.com

FEHR-GRAHAM & ASSOCIATES, LLC
ENGINEERING AND SCIENCE CONSULTANTS
PEOPLE • INTEGRITY • INNOVATION • SERVICE TO ILLINOIS

ROUTE NO.	SECTION	COUNTY	TOTAL SHEETS	SHEET NO.
T.R. 159	01-11126-00-BR	IROQUOIS	23	2
DOUGLAS ROAD DIST.		ILLINOIS	BROS-075(128)	
CONTRACT NO. 87300				

SUMMARY OF QUANTITIES

NUMBER	ITEM	UNIT	TOTAL QUANTITY	CONSTRUCTION TYPE CODE X081-2A
20100500	TREE REMOVAL, ACRES	ACRE	0.2	
20200100	EARTH EXCAVATION	CU YD	660	
20300100	CHANNEL EXCAVATION	CU YD	1960	
20400800	FURNISHED EXCAVATION	CU YD	110	
25001000	SEEDING, CLASS 2 (SPECIAL)	ACRE	0.9	
28000250	TEMPORARY EROSION CONTROL SEEDING	POUND	100	
28000300	TEMPORARY DITCH CHECKS	EACH	4	
28000400	PERIMETER EROSION BARRIER	FOOT	1330	
28100209	STONE RIPRAP, CLASS A5	TON	1147	
28102600	STONE RIPRAP DITCH	TON	44	
28200200	FILTER FABRIC	SQ YD	905	
40200800	AGGREGATE SURFACE COURSE, TYPE B	TON	1198	
40603310	HOT-MIX ASPHALT SURFACE COURSE, MIX "C", N50	TON	120	
50100100	REMOVAL OF EXISTING STRUCTURES	EACH	1	
50300225	CONCRETE STRUCTURES	CU YD	90.8	
50300280	CONCRETE ENCASEMENT	CU YD	52.0	
50400605	PRECAST PRESTRESSED CONCRETE DECK BEAMS (33" DEPTH)	SQ FT	7800	
50800105	REINFORCEMENT BARS	POUND	9070	
50900205	STEEL RAILING, TYPE S1	FOOT	522	
51201105	FURNISHING METAL SHELL PILES 14"	FOOT	2305	
51202305	DRIVING PILES	FOOT	2305	
51203200	TEST PILE METAL SHELLS	EACH	3	
51500100	NAME PLATES	EACH	1	
54200223	PIPE CULVERTS, CLASS D, TYPE 1 18"	FOOT	94	
58100200	WATERPROOFING MEMBRANE SYSTEM	SQ YD	868	
58300100	PORTLAND CEMENT MORTAR FAIRING COURSE	FOOT	1170	
63100075	TRAFFIC BARRIER TERMINAL, TYPE 5A	EACH	1	
63100167	TRAFFIC BARRIER TERMINAL TYPE 1, SPECIAL (TANGENT)	EACH	1	
66700095	PERMANENT SURVEY MARKERS	EACH	1	
67100100	MOBILIZATION	L SUM	1	
70101830	TRAFFIC CONTROL AND PROTECTION, STANDARD BLR 21	L SUM	1	
78201000	TERMINAL MARKER - DIRECT APPLIED	EACH	4	
X5020501	UNDERWATER STRUCTURE EXCAVATION PROTECTION - LOCATION NO. 1	EACH	1	
X5020502	UNDERWATER STRUCTURE EXCAVATION PROTECTION - LOCATION NO. 2	EACH	1	

*SEE SPECIAL PROVISIONS

Δ SPECIALTY ITEMS

GENERAL NOTES

WHERE SECTION OR SUBSECTION MONUMENTS ARE ENCOUNTERED, THE ENGINEER SHALL BE NOTIFIED BEFORE SUCH MONUMENTS ARE REMOVED. THE CONTRACTOR SHALL PROTECT AND CAREFULLY PRESERVE ALL PROPERTY MARKS AND MONUMENTS UNTIL THE OWNER, AND AUTHORIZED SURVEYOR OR AGENT HAS WITNESSED OR OTHERWISE REFERENCED THEIR LOCATION.

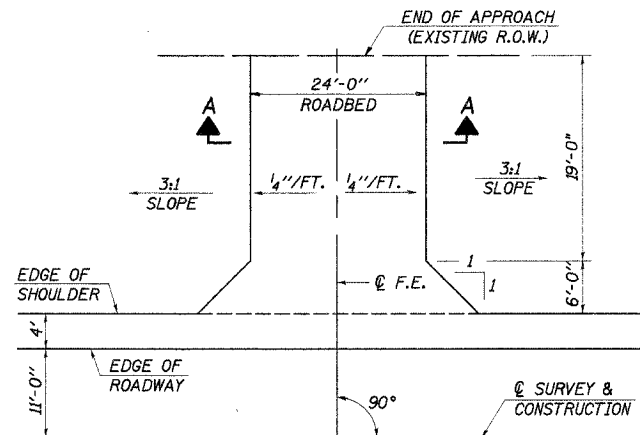
THE AREA TO BE SEEDDED SHALL CONSIST OF ALL DISTURBED EARTH SURFACES WITHIN THE RIGHT OF WAY, AS DIRECTED BY THE ENGINEER.

SEEDING, CLASS 2 (SPECIAL) = 0.9 ACRE

ALL TREES BETWEEN THE LIMITS SHOWN BELOW AND THE ADJACENT SHOWN R.O.W. WHICH INTERFERE WITH THE CONSTRUCTION SHALL BE REMOVED ONLY AS DIRECTED BY THE ENGINEER. SEE THE SPECIAL PROVISIONS.

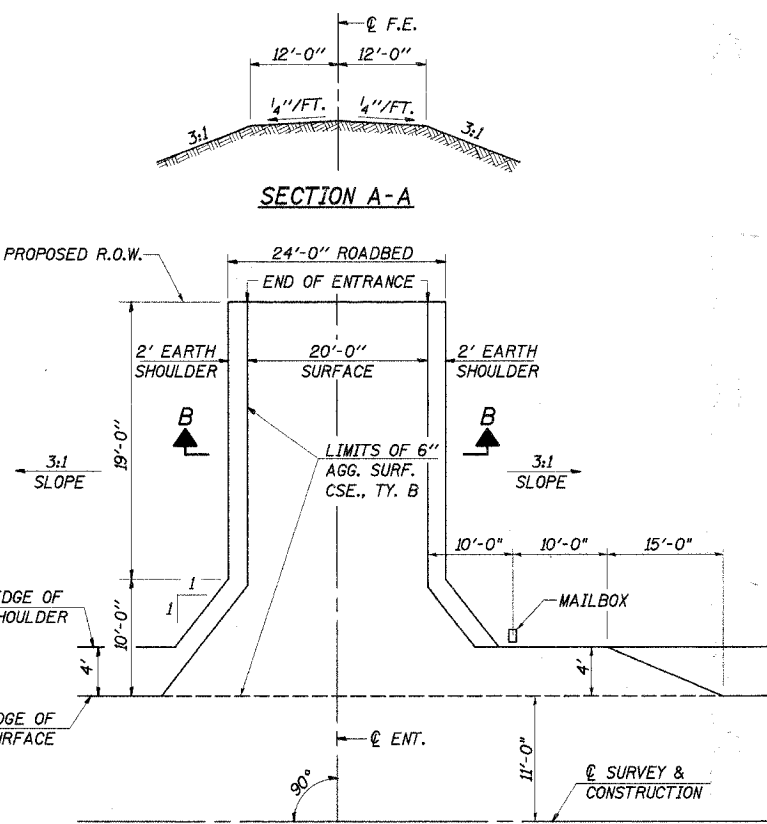
25' RT. STA. 10+00 TO 25' RT. STA. 17+00

TREE REMOVAL, ACRES = 0.2 ACRE



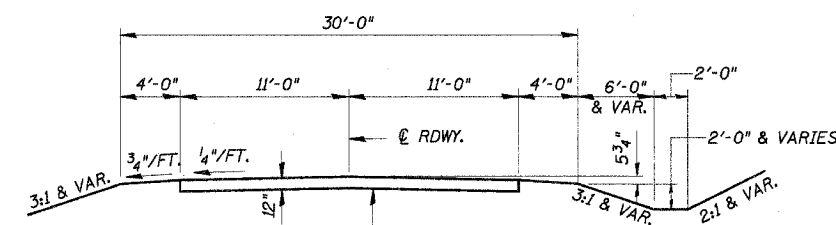
FIELD ENTRANCE DETAIL

F.E. RT. STA. 17+27



PRIVATE ENTRANCE W/ MAILBOX TURNOUT DETAIL

LT. STA. 16+97



SUGGESTED FILL SECTION CONSTRUCT AS SHOWN BY STATION CROSS SECTIONS

AGGREGATE SURFACE COURSE, TYPE B 2.05 TON/CU. YD.

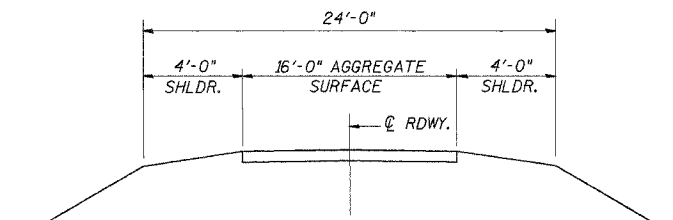
SUGGESTED CUT SECTION CONSTRUCT AS SHOWN BY STATION CROSS SECTIONS

TYPICAL PROPOSED CROSS SECTION

STA. 10+50 TO STA. 18+25

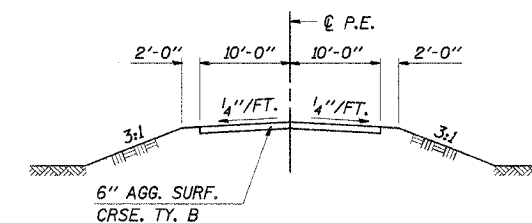
ROAD CLASSIFICATION: LOCAL ROAD ADT 0-250
CURRENT ADT LESS THAN 150

TRANSITION FROM EXISTING ROADWAY TO PROPOSED ROADWAY TO BE CONSTRUCTED FROM STA. 10+00 TO STA. 10+50 AND FROM STA. 18+25 TO STA. 18+75.



EXISTING TYPICAL CROSS SECTION

BITUMINOUS MIXTURE REQUIREMENTS			
ITEM	ASPHALT GRADE	ALLOWABLE RAP	VOIDS
SURFACE, MIX C, N50	P.G. 58-22	15%	4.0%



SECTION B-B

EARTHWORK SCHEDULE

LOCATION	EARTH EXCAVATION	EARTH EXCAVATION ADJUSTED FOR SHRINKAGE (25%)	ESTIMATED SUITABLE CHANNEL EXCAVATION	SUITABLE CHANNEL EXCAVATION ADJUSTED FOR SHRINKAGE (25%)	EMBANKMENT (FOR INFORMATION ONLY)	EARTHWORK BALANCE WASTE (+) SHORTAGE (-)**
	CU YD	CU YD	CU YD	CU YD	CU YD	CU YD
STA. 10+00 TO STA. 18+75	660	495	980	735	1340	-110
TOTALS	660	495	980	735	1340	-110

**FURNISHED EXCAVATION

SUMMARY OF QUANTITIES, GENERAL NOTES AND TYPICAL CROSS SECTION

SECTION 01-11126-00-BR

DOUGLAS ROAD DISTRICT

IROQUOIS COUNTY

STATION 14+69.94

4440 ASH GROVE
SPRINGFIELD, IL 62711
(217) 793-8600
www.fehr-graham.com

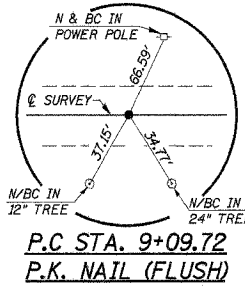
FEHR-GRAHAM & ASSOCIATES, LLC
ENGINEERING AND SCIENCE CONSULTANTS

JOB NO.: 46815
FILE: 0228SUMTYP.DGN
DATE: 12/08/06

SE 1/4, SECTION 26, T27N, R14W, 2ND P.M.
INEZ C. BRADEN

SW 1/4, SECTION 25, T27N, R14W, 2ND P.M.
SOY CAPITAL AG. SERVICES

ROUTE	SECTION	COUNTY	TOTAL SHEETS	SHEET NO.
T.R. 159	01-11126	IRROQUOIS	23	3
CONTRACT NO. 87300				



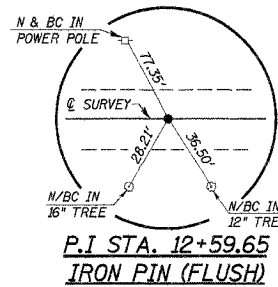
PIPES TO BE REMOVED
LT. STA. 16+90, 12" CMP, 15' LONG
RT. STA. 17+27, 18" CMP, 41' LONG
QUANTITIES INCLUDED IN "EARTH EXCAVATION".

P.C. STA. 9+09.72
P.K. NAIL (FLUSH)

CURVE NO. 1
P.I. STA. 10+09.80
 $\Delta = 5^{\circ}29'59''$ RT.
 $D = 2^{\circ}44'59''$
 $T = 100.08'$
 $R = 2083.62'$
 $L = 200.00'$
 $E = 2.40'$
P.C. STA. 9+09.72
P.T. STA. 11+09.72
NO S.E.

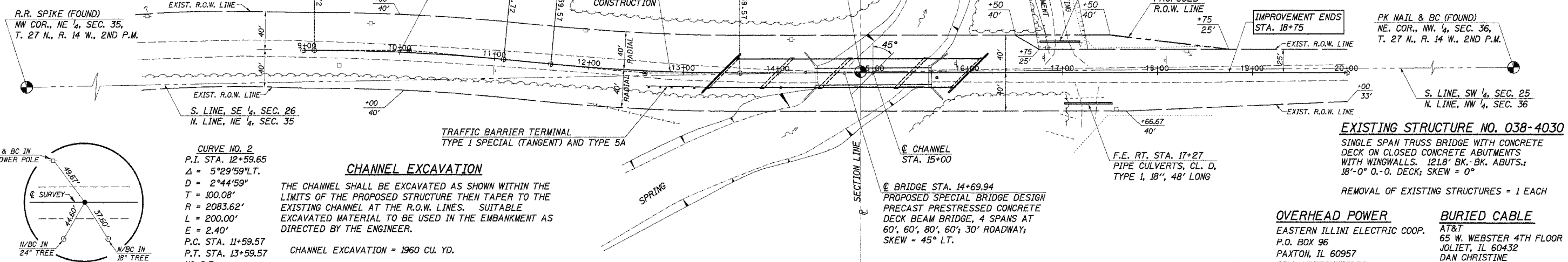
ENTRANCES TO BE BUILT
LT. STA. 16+97, P.E. -0.3%, 24' ROADBED
RT. STA. 17+27, F.E. -4.0%, 24' ROADBED
QUANTITIES INCLUDED IN THOSE LISTED

CHISELED "X" IN CONC. DECK (RESET)
NE COR., NE 1/4, SECTION 35
T27N, R14W, 2ND P.M.
125' LT., STA. 14+87
PERMANENT SURVEY MARKER TO BE SET



P.I. STA. 12+59.65
IRON PIN (FLUSH)

P.O.T. STA. 19+99.66
IRON PIN (FLUSH)



CURVE NO. 2
P.I. STA. 12+59.65
 $\Delta = 5^{\circ}29'59''$ LT.
 $D = 2^{\circ}44'59''$
 $T = 100.08'$
 $R = 2083.62'$
 $L = 200.00'$
 $E = 2.40'$
P.C. STA. 11+59.57
P.T. STA. 13+59.57
NO S.E.

CHANNEL EXCAVATION
THE CHANNEL SHALL BE EXCAVATED AS SHOWN WITHIN THE
LIMITS OF THE PROPOSED STRUCTURE THEN TAPER TO THE
EXISTING CHANNEL AT THE R.O.W. LINES. SUITABLE
EXCAVATED MATERIAL TO BE USED IN THE EMBANKMENT AS
DIRECTED BY THE ENGINEER.

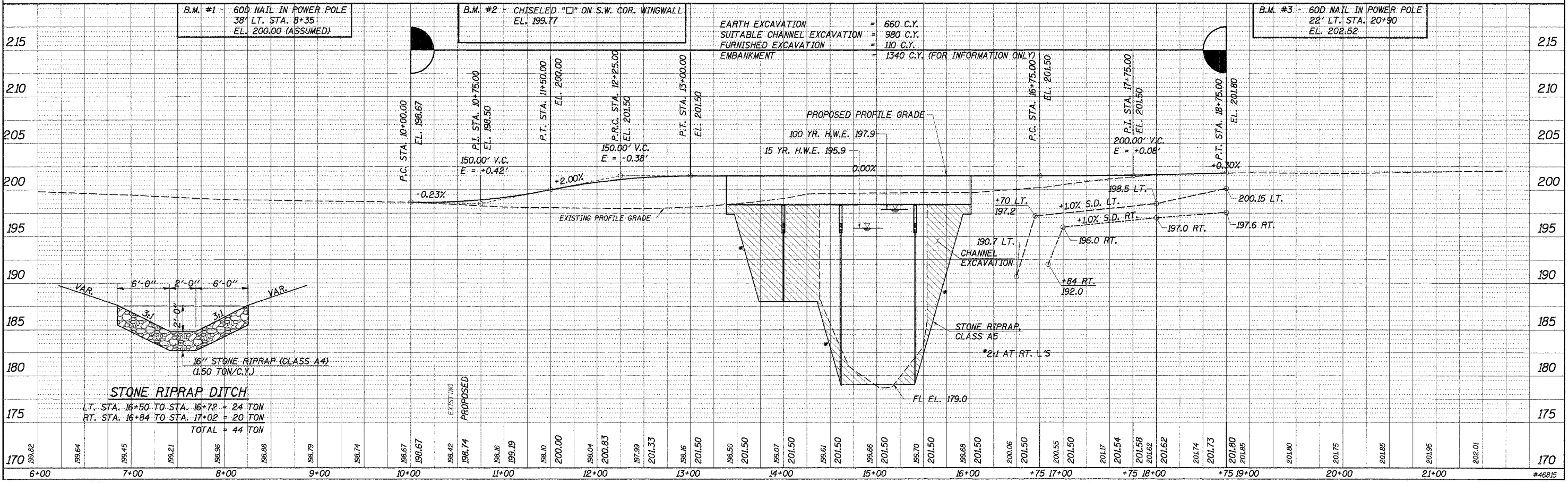
CHANNEL EXCAVATION = 1960 CU. YD.

JIMMIE L. & MICHAEL S. NIMS
NE 1/4, SECTION 35, T27N, R14W, 2ND P.M.

STEVEN LEMENGER et al
NW 1/4, SECTION 36, T27N, R14W, 2ND P.M.

OVERHEAD POWER
EASTERN ILLINI ELECTRIC COOP.
P.O. BOX 96
PAXTON, IL 60957
BILL HOFFSHNEIDER
217-379-2131 EXT. 155

BURIED CABLE
AT&T
65 W. WEBSTER 4TH FLOOR
JOLIET, IL 60432
DAN CHRISTINE
815-727-0575

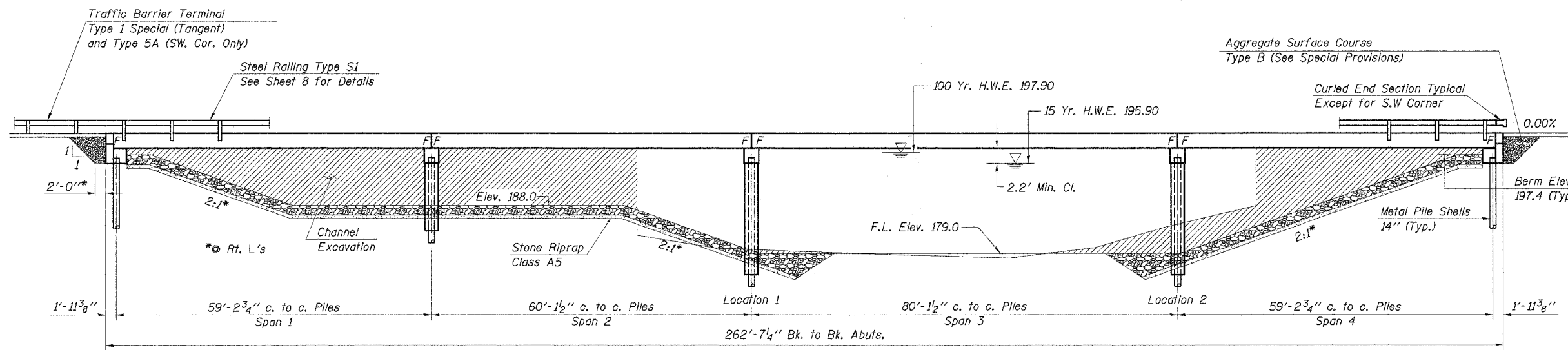


DATE	BY	REVISION

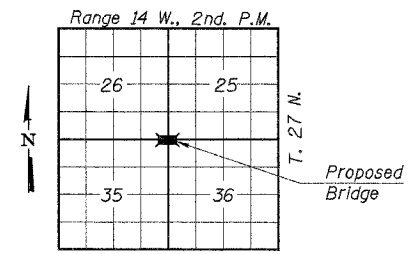
DATE	BY	REVISION

ROUTE NO.	SECTION	COUNTY	TOTAL SHEETS	SHEET NO.
T.R. 159	01-11126-00-BR	IROQUOIS	23	4
DOUGLAS ROAD DIST.		ILLINOIS	BROS-075(128)	

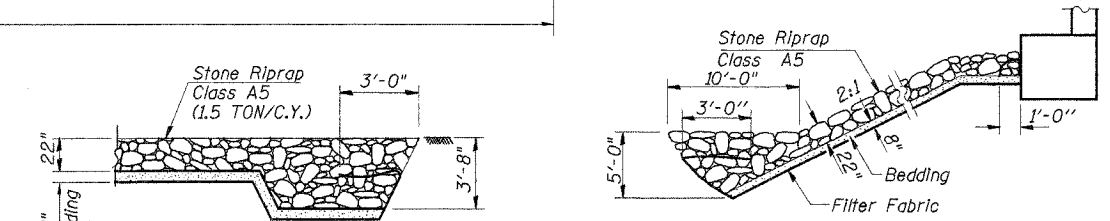
CONTRACT NO. 87300



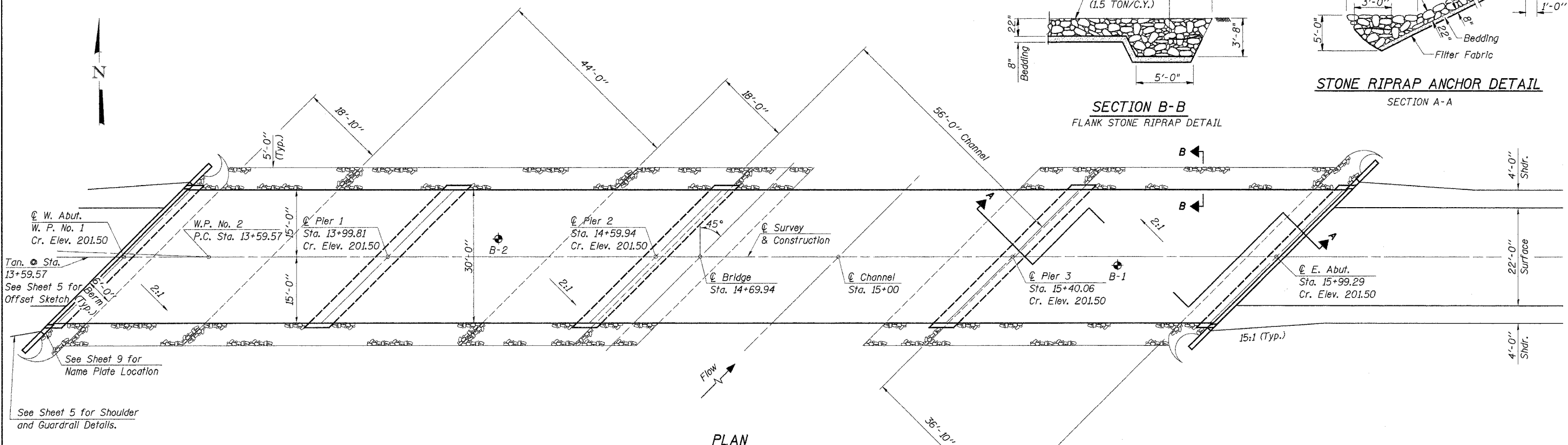
ELEVATION



LOCATION PLAN



STONE RIPRAP ANCHOR DETAIL
SECTION A-A
SECTION B-B
FLANK STONE RIPRAP DETAIL



PLAN

Note: IDNR - Office of Water Resources has issued Permit No. DS2005013 for construction of this project.

WATERWAY INFORMATION

DESIGNED	P.S.L.
CHECKED	S.F.M.
DRAWN	S.A.P. & J.P.S.
CHECKED	S.F.M.

Drainage Area	183.12 Sq. Mi.
Existing Opening (15 Yr.)	1,161 Sq. Ft.
Required Opening (15 Yr.)	1,765 Sq. Ft.
Proposed Opening (15 Yr.)	1,765 Sq. Ft.
Design Discharge (15 Yr.)	4,477 C.F.S.
Created Head (15 Yr.)	0.0 Ft.
100 Year Discharge	6,563 C.F.S.
100 Yr. Created Head	0.1 Ft.

DESIGN STRESSES

$f'_c = 5,000$ p.s.i. (Prestressed Beams)
 $f'_{bt} = 4,000$ p.s.i. (Prestressed Beams)
 $f_c = 1,400$ p.s.i. (Concrete)
 $f_s = 270,000$ p.s.i. (Prestressed Strands)
 $f_{st} = 201,960$ p.s.i. (Prestressed Strands)
 $f_s = 24,000$ p.s.i. (Reinf. Bars -- Field Units)
 $f_y = 60,000$ p.s.i. (Reinf. Bars -- Field Units)
 $n = 9$ (Concrete)
 LOADING HS20-44
 Design Specifications: 2002 AASHTO
 25#/Sq. Ft. included in dead load for future wearing surface.

"I certify that to the best of my knowledge, information and belief, this bridge design is structurally adequate for the design loading shown on the plans. The design is an economical one for the style of structure and complies with requirements of the current 'AASHTO Standard Specifications for Highway Bridges'."

Fred J. Stone, Jr. (11-19-06)
ILLINOIS STRUCTURAL NO. 2934 (Expires 11/30/08)



GENERAL PLAN & ELEVATION

SECTION 01-11126-00-BR
DOUGLAS ROAD DISTRICT
IROQUOIS COUNTY
STATION 14+69.94

4440 ASH GROVE SPRINGFIELD, IL 62711 (217) 793-8600 www.fehr-graham.com	FEHR-GRAHAM & ASSOCIATES, LLC ENGINEERING AND SCIENCE CONSULTANTS REPORTS, RECORDS, SURVEYING, TRANSPORTATION, ENVIRONMENTAL	JOB NO.: 46815 FILE: 02286PE.DGN DATE: 11/06/06
--	---	---

ROUTE NO.	SECTION	COUNTY	TOTAL SHEETS	SHEET NO.
T.R. 159	01-11126-00-BR	IROQUOIS	23	5
DOUGLAS ROAD DIST.	ILLINOIS	BROS-075(128)		

CONTRACT NO. 87300

GENERAL NOTES

See sheets 13 thru 16 for Boring data.

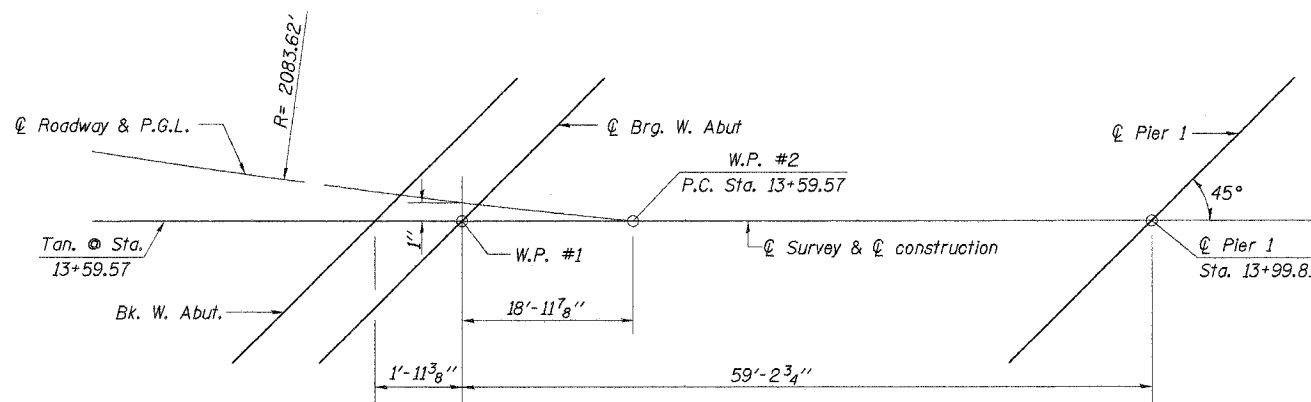
Reinforcement bars shall conform to the requirements of ASTM A706 Grade 60 (IL Modified). See Special Provisions.

The Contractor shall drive one metal shell test pile in a permanent location at each abutment and at Pier #2 as directed by the Engineer, before ordering the remainder of piles.

Layout of slope protection system may be varied in the field to suit ground conditions as directed by the Engineer.

Aggregate Surface Course, Ty. B shall be used to backfill behind each abutment as indicated by the Engineer. The additional quantity of CA-10 is included in the total quantity for Aggregate Surface Course, Ty. B. (See Special Provisions).

Bars indicated thus 12x4-#5 etc. indicates 12 lines of bars with 4 lengths per line.



WEST ABUTMENT OFFSET SKETCH

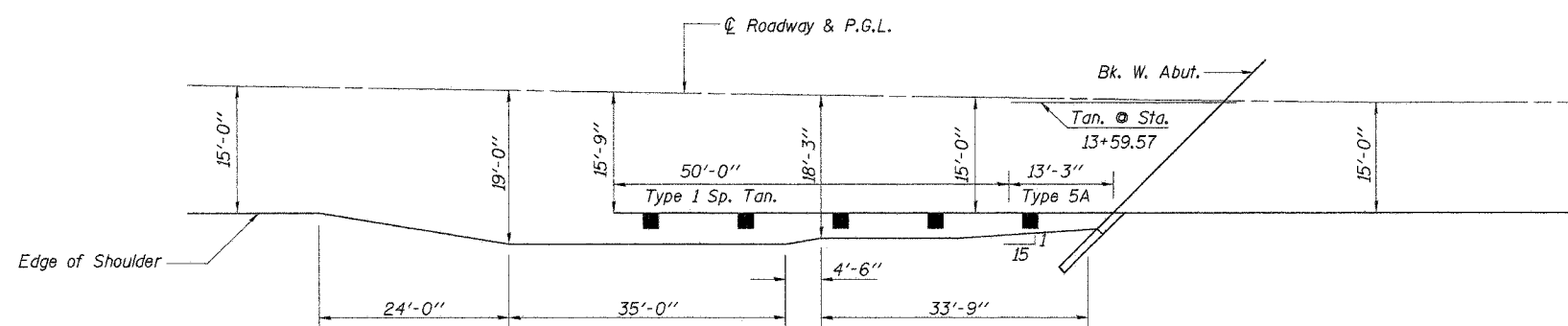
SPRING CREEK
BUILT 200_ BY
DOUGLAS ROAD DISTRICT
IROQUOIS COUNTY
SEC. 01-11126-00-BR
F.A. PROJ. BROS-075(128)
STR. NO. 038-4055 LOADING HS20

LETTERING FOR NAME PLATE

See Std. 515001

TOTAL BILL OF MATERIAL

ITEM	UNIT	SUPER	SUB	TOTAL
Precast Prestressed Concrete Deck Beams (33" Depth)	Sq. Ft.	7800		7800
Concrete Structures	Cu. Yd.		90.8	90.8
Reinforcement Bars	Pound		9070	9070
Steel Railing, Type S1	Foot	522		522
Name Plates	Each		1	1
Metal Shell Piles 14"	Foot		2305	2305
Test Pile Metal Shells	Each		3	3
Stone Riprap, Class A5	Ton		1147	1147
Filter Fabric	Sq. Yd.		905	905
Concrete Encasement	Cu. Yd.		52.0	52.0
Aggregate Surface Course, Type B	Ton	165		165
Underwater Struct. Excav. Prof. Location 1	Each		1	1
Underwater Struct. Excav. Prof. Location 2	Each		1	1
Hot-Mix Asphalt Surf. Crse. Mix C, N50	Ton	120		120
Waterproofing Membrane System	Sq. Yd.	868		868
P.C. Mortar Fairing Course	Foot	1170		1170



S.W. APPROACH GUARDRAIL AND EMBANKMENT

See Std. 630301

DESIGNED	P.S.L.
CHECKED	S.F.M.
DRAWN	S.A.P. & J.P.S.
CHECKED	S.F.M.

GENERAL NOTES &
BILL OF MATERIAL
SECTION 01-11126-00-BR
DOUGLAS ROAD DISTRICT
IROQUOIS COUNTY
STATION 14+69.94

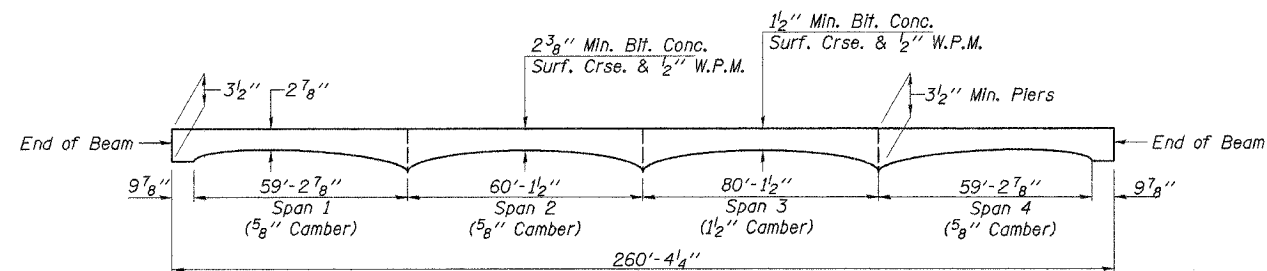
4440 ASH GROVE
SPRINGFIELD, IL 62711
(217) 793-8600
www.fehr-graham.com

FEHR-GRAHAM & ASSOCIATES, LLC
ENGINEERING AND SCIENCE CONSULTANTS
FORREST E. FEEBURN, D. MICHELLE, E. MORGAN, VI. SPRINGFIELD, IL

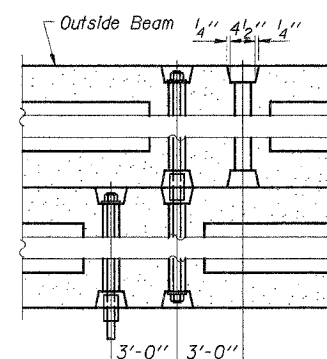
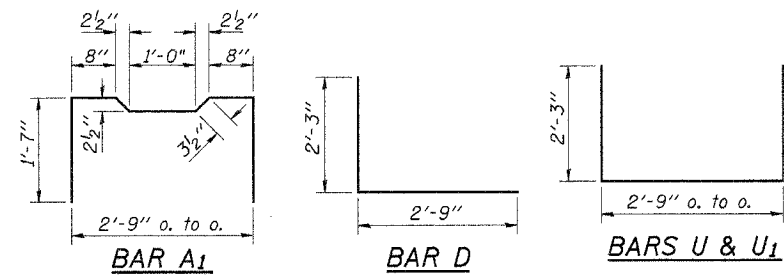
JOB NO.: 46815
FILE: 022861.DGN
DATE: 12/08/06

ROUTE NO.	SECTION	COUNTY	TOTAL SHEETS	SHEET NO.
T.R. 159	01-1126-00-BR	IROQUOIS	23	6
DOUGLAS ROAD DIST.		ILLINOIS	BROS-075(128)	

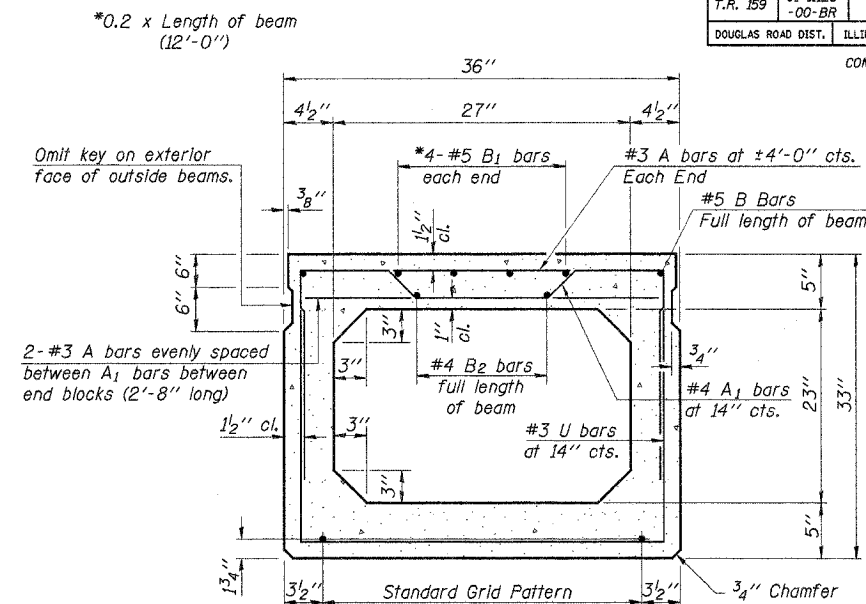
CONTRACT NO. 87300



PROFILE OF OVERLAY

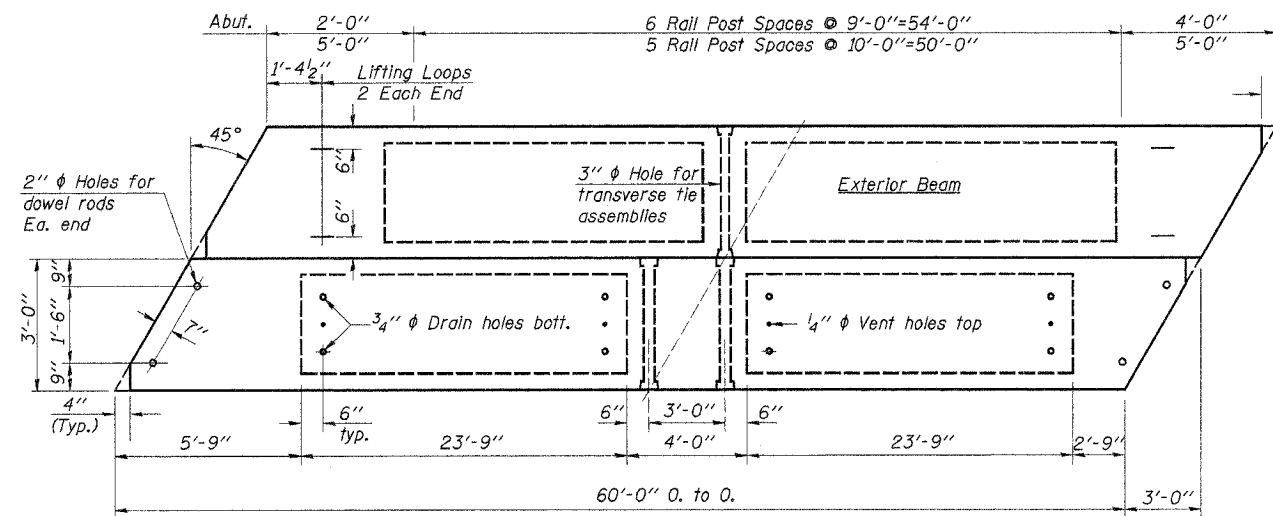


TYPICAL TRANSVERSE TIE ASSEMBLY

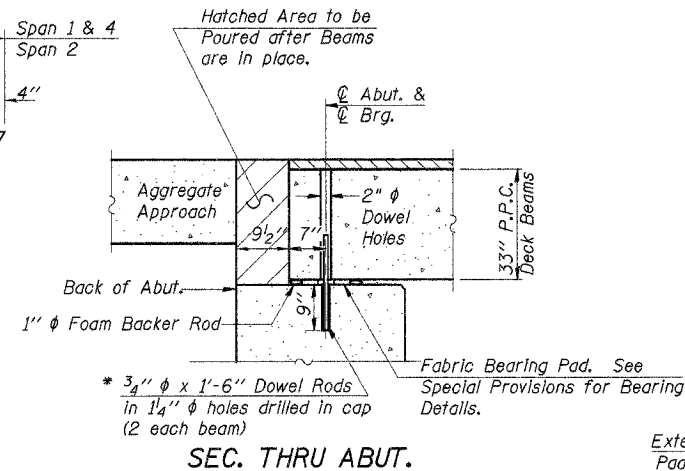


TYPICAL SECTION

Note: Place strands symmetrically about center of beam.
10-1/2" Strands Each Strand Stressed to 30,900 Lbs.
10-Strands 1 3/4" up

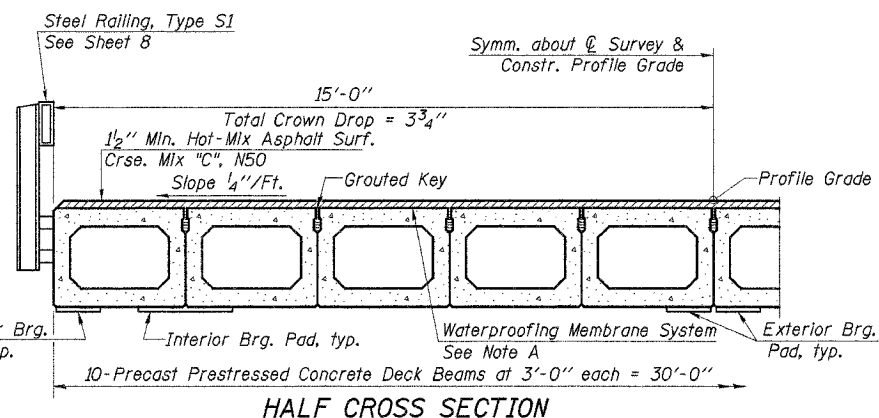


PLAN



SEC. THRU ABUT.

* 3/4" x 1'-6" Dowel Rods in 1 1/4" holes drilled in cap (2 each beam)
* Dowel Rods to be grouted after beams are in place and allowed to cure (Min. 24 hrs.) prior to grouting the shear keys.



HALF CROSS SECTION

Note A:

The top surface of the beams shall be finished in accordance with article 504.06 of the Standard Specifications except that the surface shall be roughened by brooming. The finished surface shall be free of depressions or high spots with sharp corners, and the top edge of keys shall be rounded or chamfered a minimum of 1/4"

NOTES

- Prestressing steel shall be uncoated high strength, low relaxation 7-wire strand, Grade 270. The nominal diameter shall be 1/2" and the nominal cross-sectional area shall be 0.153 sq. in. Lifting loops shall be 3-1/2" #270 ksi strands, as shown.
- The 1" rods in the transverse tie assembly shall be tightened to a snug fit and the threads set. Pockets that receive transverse tie bar on outside shall be filled with grout after transverse tie assembly is in place.
- Non prestressing steel shall conform to AASHTO M-31 or M-322, Grade 60.
- The bearing seat surfaces shall be adjusted by shimming to assure firm and even bearing. Two 1/8" fabric adjusting shims of the dimensions of the Exterior Bearing Pad shall be provided for each bearing.
- Keyway surfaces shall be cleaned to remove form oil or other bond breaking material prior to shipment of the beams. Cleaning shall be done by sandblasting the keyway areas between top of the beam and the bottom edge of the key.
- Corrosion Inhibitor, as covered in the Special Provisions, shall be used in the concrete for precast prestressed concrete deck beams.
- Required Release Strength, f'ci, shall be 4,000 p.s.i.

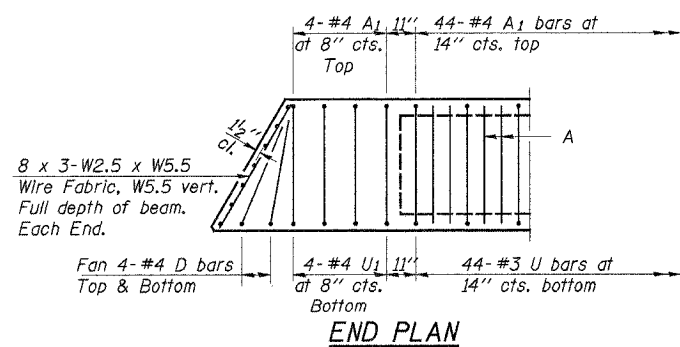
BILL OF MATERIAL

Item	Unit	Quantity
Precast Prestressed Concrete Deck Beams (33" Depth)	Sq. Ft.	5,400
Hot-Mix Asphalt Surface Course, Mix "C", N50	Ton	89
Waterproofing Membrane System	Sq. Yd.	601
P.C. Mortar Fairing Course	Foot	810

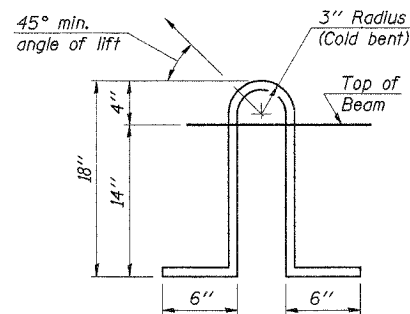
Estimated Total Weight (One Beam) = 45,260 Pounds

SUPERSTRUCTURE SPANS 1, 2 & 4

SECTION 01-1126-00-BR
DOUGLAS ROAD DISTRICT
IROQUOIS COUNTY
STATION 14+69.94



END PLAN



LIFTING LOOP DETAIL

DESIGNED	P.S.L.
CHECKED	S.F.M.
DRAWN	S.A.P. & J.P.S.
CHECKED	S.F.M.

PD-5-L 9-1-03

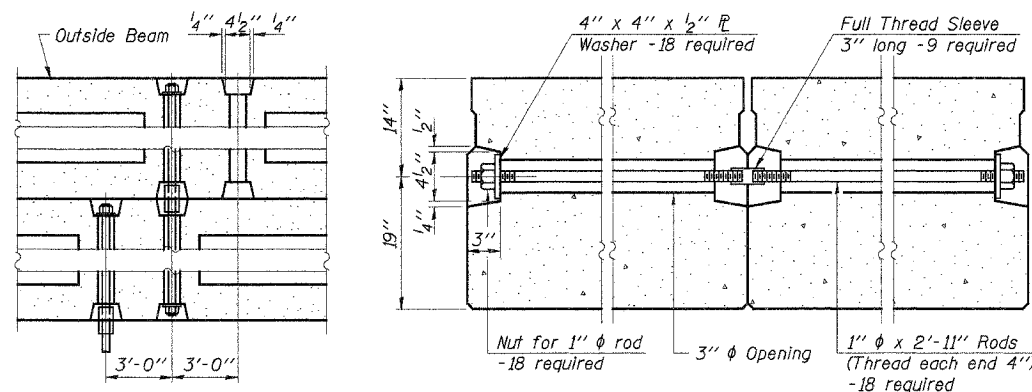
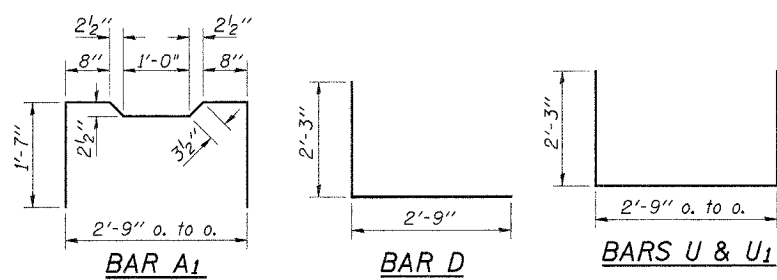
4440 ASH GROVE
SPRINGFIELD, IL 62711
(217) 793-8600
www.fehr-graham.com

FEHR-GRAHAM & ASSOCIATES, LLC
ENGINEERING AND SCIENCE CONSULTANTS
REPORT & RECORD, E. ROSELLE & MARSH, VI. SPRINGFIELD, IL

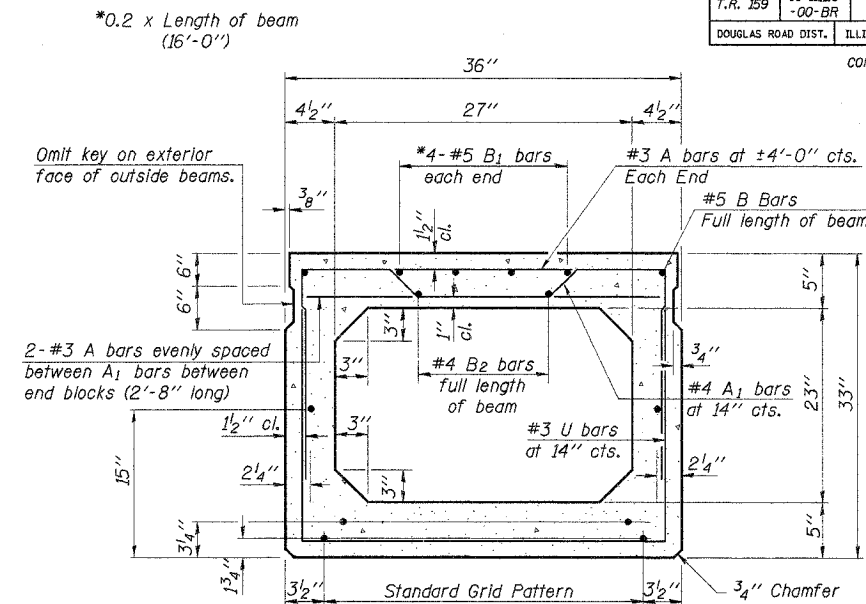
JOB NO.: 46815
FILE: 0228SUPER.DGN
DATE: 11/06/06

ROUTE NO.	SECTION	COUNTY	TOTAL SHEETS	SHEET NO.
T.R. 159	01-1126-00-BR	IROQUOIS	23	7
DOUGLAS ROAD DIST.		ILLINOIS	BROS-075(128)	

CONTRACT NO. 87300



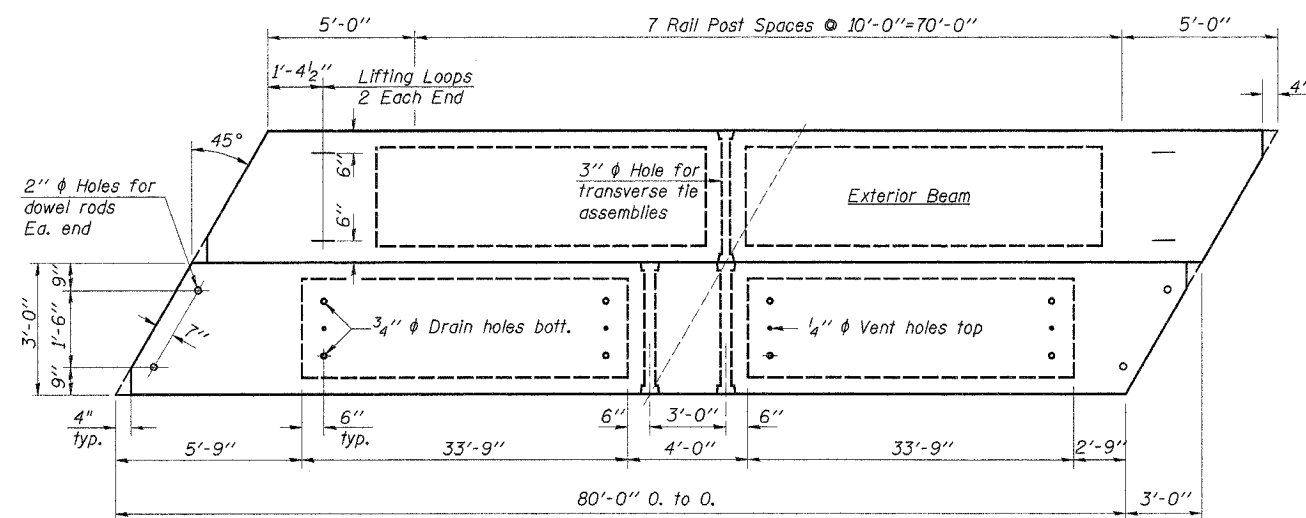
TYPICAL TRANSVERSE TIE ASSEMBLY



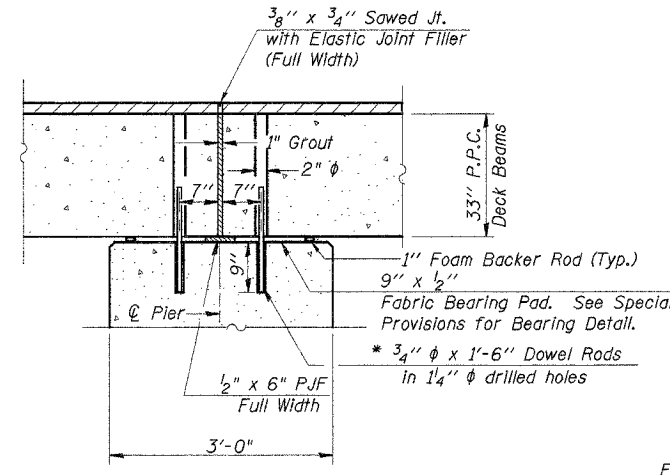
TYPICAL SECTION

Note: Place strands symmetrically about centerline of beam.

18-1/2" phi Strands Each Strand Stressed to 30,900 Lbs.
10-Strands 1 3/4" up, 6-Strands 3/4" up, 2-Strands 15" up.



PLAN



SEC. AT PIER

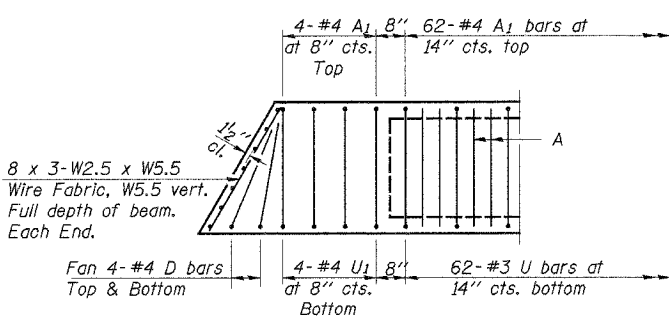
Note: After beams are in place, 1 1/4" holes shall be drilled into the substructure, and the dowel rods grouted in place and allowed to cure (Min. 24 Hrs.) prior to grouting shear key.

Note A:

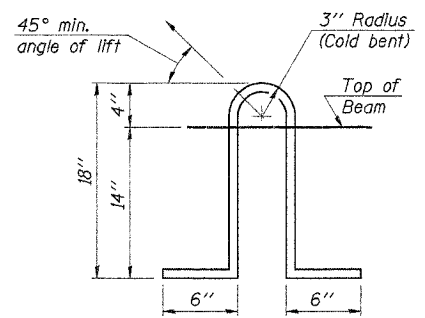
The top surface of the beams shall be finished in accordance with article 504.06 of the Standard Specifications except that the surface shall be roughened by brooming. The finished surface shall be free of depressions or high spots with sharp corners, and the top edge of keys shall be rounded or chamfered a minimum of 1/4"

NOTES

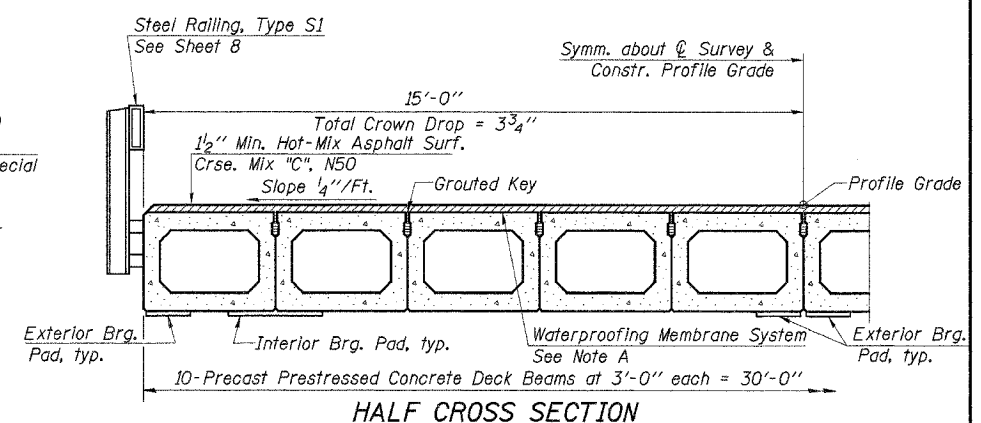
Prestressing steel shall be uncoated high strength, low relaxation 7-wire strand, Grade 270. The nominal diameter shall be 1/2" and the nominal cross-sectional area shall be 0.153 sq. in. Lifting loops shall be 3-1/2" phi-270 ksi strands, as shown. The 1" phi rods in the transverse tie assembly shall be tightened to a snug fit and the threads set. Pockets that receive transverse tie bar on outside shall be filled with grout after transverse tie assembly is in place. Non prestressing steel shall conform to AASHTO M-31 or M-322, Grade 60. The bearing seat surfaces shall be adjusted by shimming to assure firm and even bearing. Two 1/8" fabric adjusting shims of the dimensions of the Exterior Bearing Pad shall be provided for each bearing. Keyway surfaces shall be cleaned to remove form oil or other bond breaking material prior to shipment of the beams. Cleaning shall be done by sandblasting the keyway areas between top of the beam and the bottom edge of the key. Corrosion Inhibitor, as covered in the Special Provisions, shall be used in the concrete for precast prestressed concrete deck beams. Required Release Strength, f'ci, shall be 4,000 p.s.i.



END PLAN



LIFTING LOOP DETAIL



HALF CROSS SECTION

BILL OF MATERIAL

Item	Unit	Quantity
Precast Prestressed Concrete Deck Beams (33" Depth)	Sq. Ft.	2,400
Hot-Mix Asphalt Surface Course, Mix 'C', N50	Ton	31
Waterproofing Membrane System	Sq. Yd.	267
P.C. Mortar Fairing Course	Foot	360
Estimated Total Weight (One Beam) = 57,660 Pounds		

SUPERSTRUCTURE SPAN 3

SECTION 01-1126-00-BR
DOUGLAS ROAD DISTRICT
IROQUOIS COUNTY
STATION 14+69.94

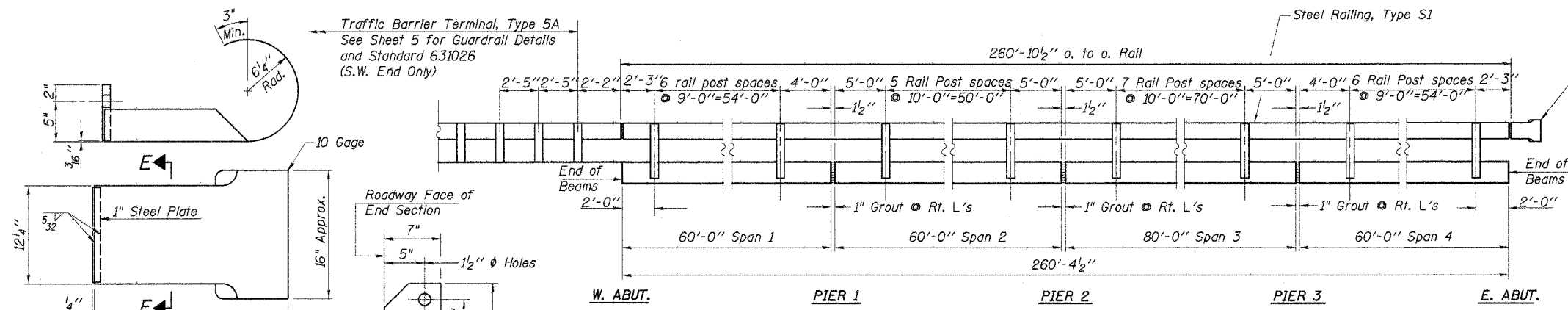
DESIGNED	P.S.L.
CHECKED	S.F.M.
DRAWN	S.A.P. & J.P.S.
CHECKED	S.F.M.

PD-5-L 9-1-03

4440 ASH GROVE SPRINGFIELD, IL 62711 (217) 793-8600 www.fehr-graham.com	FEHR-GRAHAM & ASSOCIATES, LLC ENGINEERING AND SCIENCE CONSULTANTS REPAIR, ILL. ROCKFORD, ILL. ROCKFORD, ILL. SPRINGFIELD, ILL.	JOB NO.: 46815 FILE: 0228SUPER2.DGN DATE: 11/06/06
--	---	--

ROUTE NO.	SECTION	COUNTY	TOTAL SHEETS	SHEET NO.
T.R. 159	01-11126-00-BR	IROQUOIS	23	8
DOUGLAS ROAD DIST.		ILLINOIS	BROS-075(128)	

CONTRACT NO. 87300



NOTES

Hollow structural steel tubing shall conform to the requirements of ASTM designation A-500 Grade B Structural Steel Tubing and shall meet the longitudinal CVN requirements of 15 Ft.-Lbs. at 0°F.

All other steel shapes and plates shall conform to the requirements of AASHTO M-270, Grade 36 except posts and angles shall conform to AASHTO M-270, Grade 50.

Bolts, cap screws, and nuts shall conform to the requirement of ASTM designation A-307 except for high strength bolts, nuts and washers noted which shall conform to AASHTO M-164.

All bolts, nuts, cap screws, washers and lock washers shall be galvanized in accordance with AASHTO M-232.

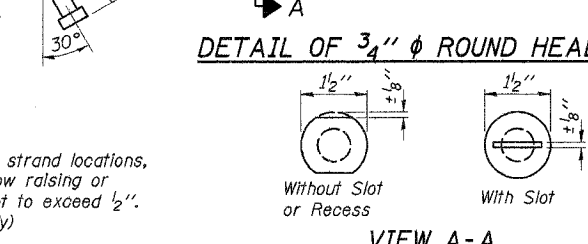
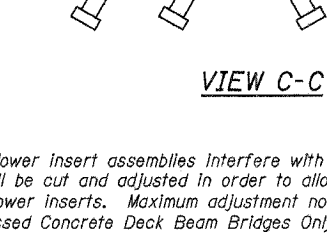
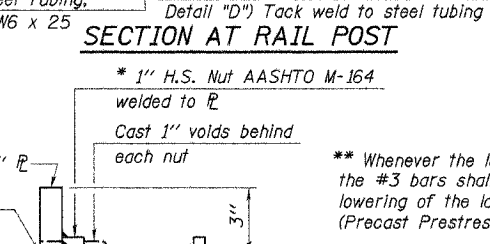
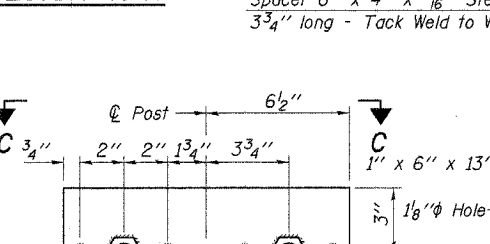
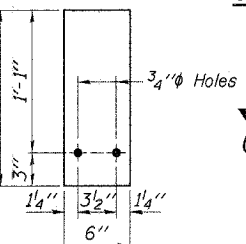
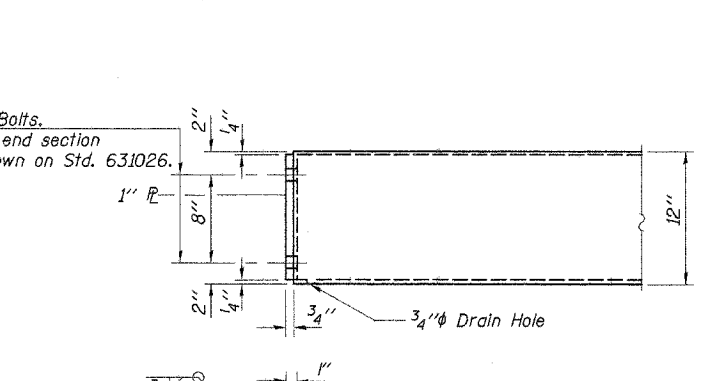
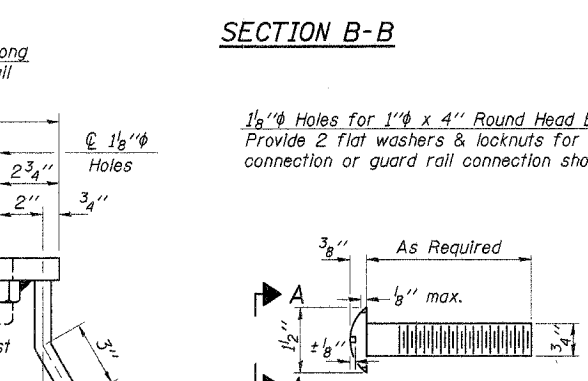
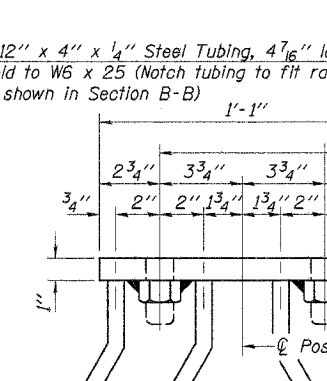
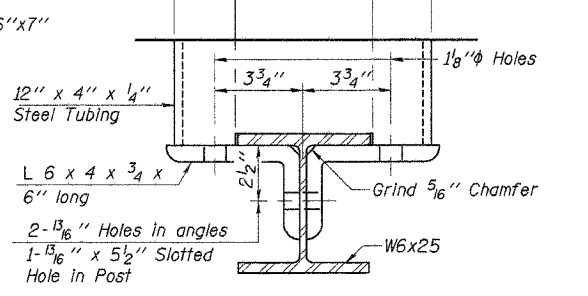
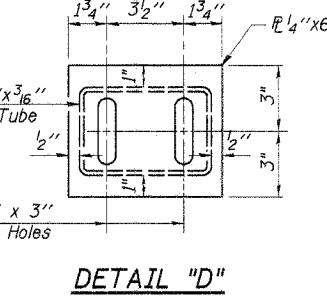
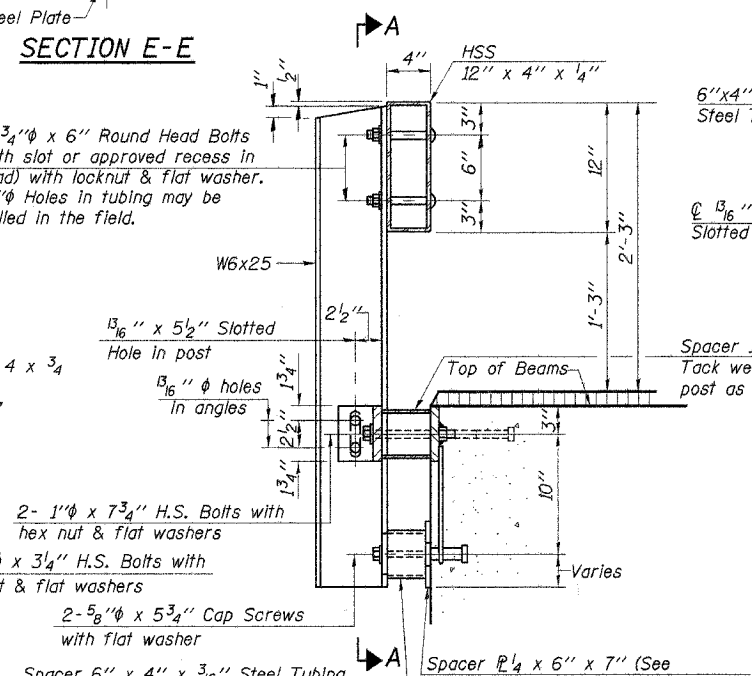
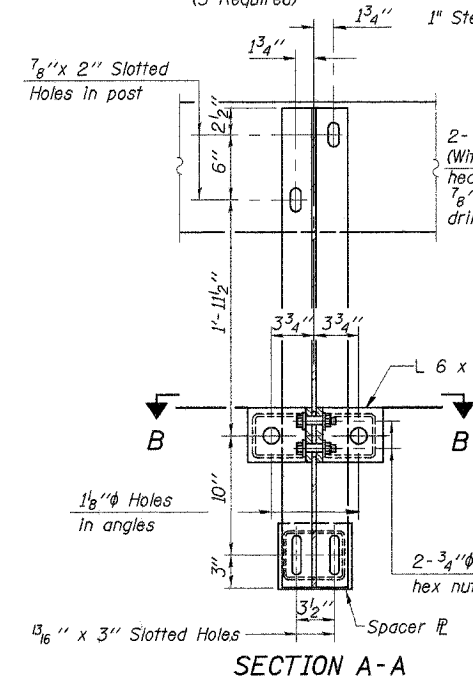
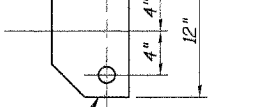
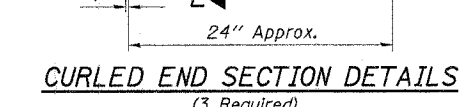
All posts, railing, rail splices, anchor devices, angles and spacers shall be galvanized after shop fabrication in accordance with AASHTO M-111 and ASTM A-385. Galvanized rail shall not be painted.

Railing shall be in accordance with Section 509 of the Standard Specifications, except as noted, and will be paid for at the contract unit price per foot for STEEL RAILING, TYPE S1.

All field drilled holes shall be coated with an approved zinc rich paint before erection.

The lower plate of the post spacer in contact with concrete shall receive two coats of asphalt paint conforming to Section 1060.07 Type II or place 1/8" fabric bearing pad between the post spacer and concrete.

The 3/4" high strength bolts used to connect the 6 x 4 x 3/4 angles to the post shall be tightened in accordance with Article 505.04(f)(2) of the Standard Specifications. The 1" high strength bolts connecting the angles to the concrete shall be tightened to a snug fit and given an additional 1/2 turn. The 5/8" cap screws in bottom of posts shall be tightened to a snug fit only.



Note: For multi-span bridges, sufficient 1/4" x 6" x 1'-4" galvanized steel shims shall be provided to align rail between adjacent spans. Cost incidental to Steel Railing.

DESIGNED	P.S.L.
CHECKED	S.F.M.
DRAWN	S.A.P. & J.P.S.
CHECKED	S.F.M.

* Threaded areas shall be plugged or blocked off during casting of beam.

* 1" H.S. Nut AASHTO M-164 welded to P
Cast 1" voids behind each nut

** Whenever the lower insert assemblies interfere with strand locations, the #3 bars shall be cut and adjusted in order to allow raising or lowering of the lower inserts. Maximum adjustment not to exceed 1/2". (Precast Prestressed Concrete Deck Beam Bridges Only)

3/4" φ XXS Pipe or Hex Coupler Nuts conforming to AASHTO M291, Grade A - 3" long welded to #3 bar and Tap pipe for 5/8" φ Cap Screw.

1" x 6" x 13" P
1 1/8" φ Hole
3/4" φ x 6" Granular or solid flux filled headed studs conforming to Article 1006.32 of the Std. Specs. automatically end welded. 4 Required per P

1/8" φ Holes for 1" φ x 4" Round Head Bolts. Provide 2 flat washers & locknuts for end section connection or guard rail connection shown on Std. 631026.

As Required
1/8" max.

1/2" ± 1/8"

Without Slot or Recess
With Slot

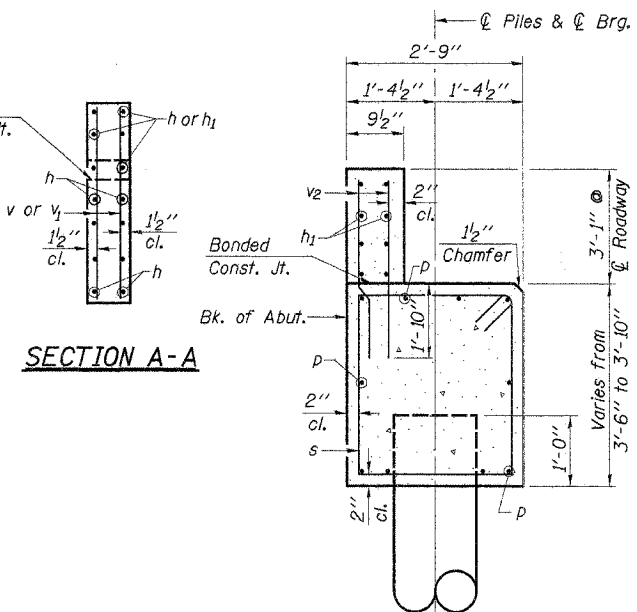
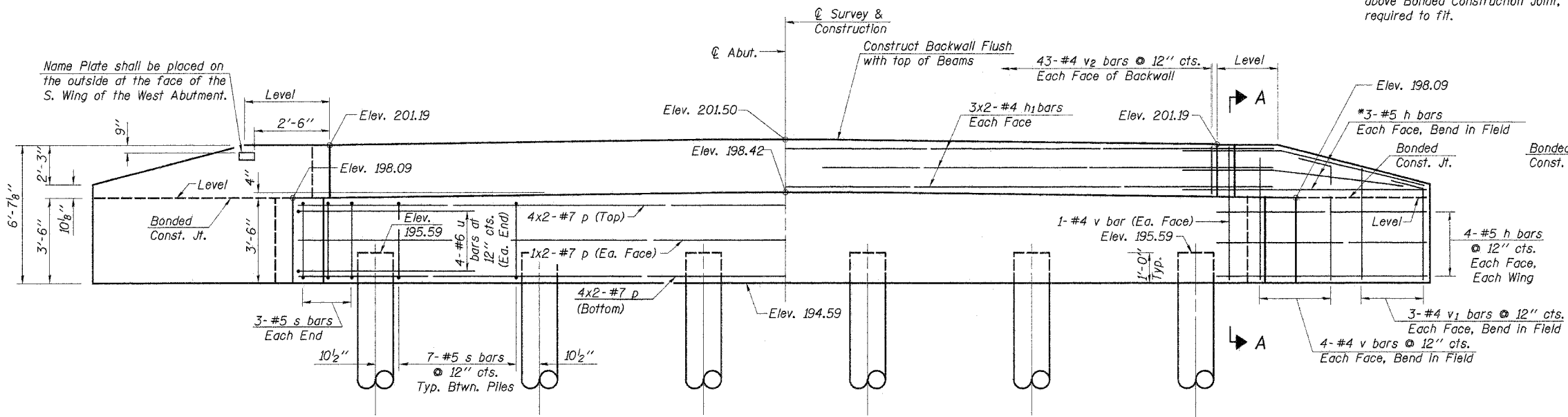
BILL OF MATERIAL

Item	Unit	Quantity
Steel Railing, Type S1	Foot	522

ROUTE NO.	SECTION	COUNTY	TOTAL SHEETS	SHEET NO.
T.R. 159	01-11126-00-BR	IROQUOIS	23	9
DOUGLAS ROAD DIST.		ILLINOIS	BROS-075(128)	

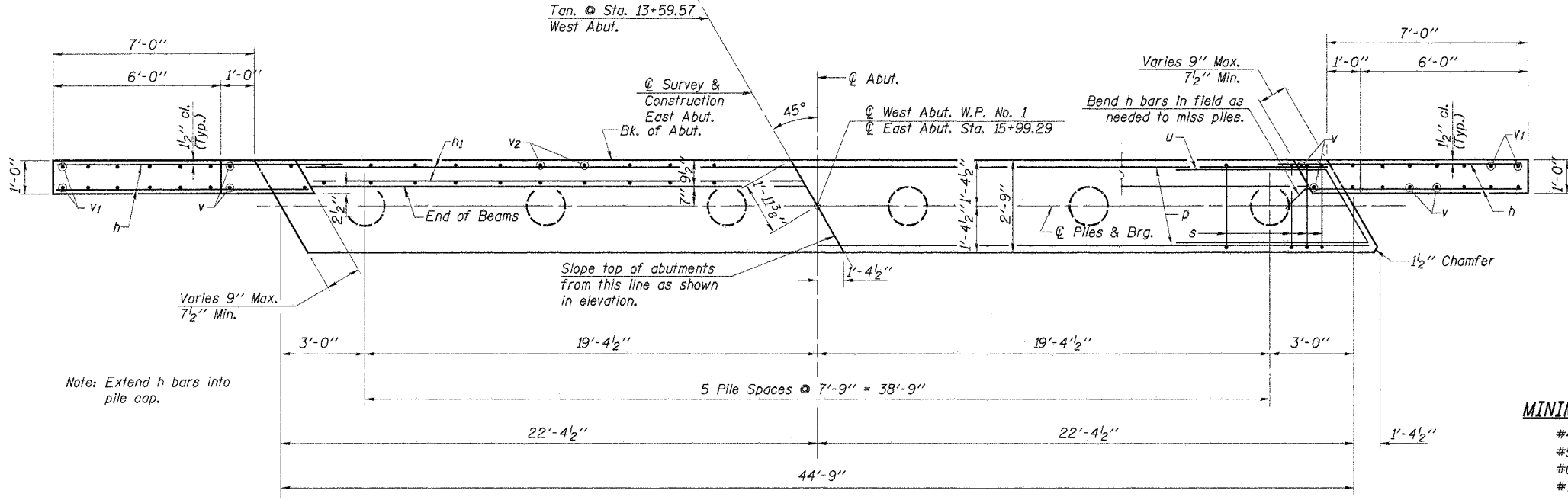
CONTRACT NO. 87300

*Cut h bars in Front Face of Wingwall, above Bonded Construction Joint, as required to fit.



Note: The backwall and the portions of the wingwalls above the Bonded Construction Joint shall be poured before the beams are in place.

ELEVATION

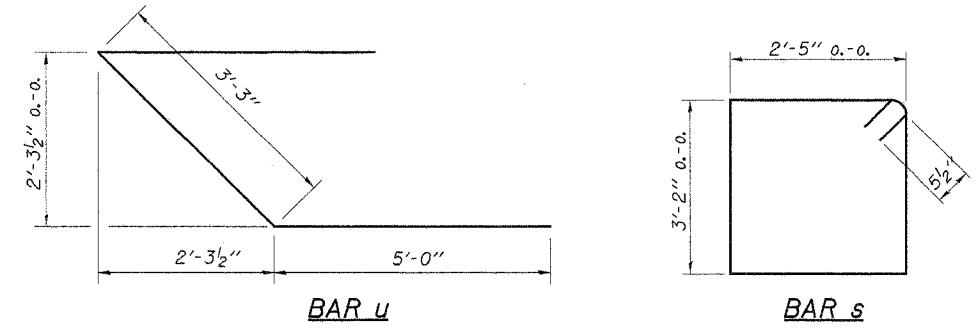


Note: Extend h bars into pile cap.

MINIMUM BAR LAP

- #4 = 1'-4"
- #5 = 1'-8"
- #6 = 2'-0"
- #7 = 2'-9"

PLAN



PILE DATA

Type & Size..... Metal Shell - 14 In. Dia. x 0.250 in. walls
 No. Req'd. (2 Abuts.)..... *12
 Nominal Required Bearing..... 300 kips
 Allowable Resistance Available..... 100 kips
 Estimated Length..... 75 ft. West Abutment
 66 ft. East Abutment

*Includes 1 Test Pile to be driven in a permanent location at each abutment.
 The test piles shall be driven to 110 percent of the Nominal Required Bearing indicated above.

TWO ABUTMENTS BILL OF MATERIAL

Bar	No.	Size	Length	Shape
h	56	#5	8'-9"	—
h1	24	#4	23'-0"	—
p	40	#7	23'-7"	—
s	82	#5	12'-1"	□
u	16	#6	13'-3"	△
v	40	#4	6'-2"	—
v1	24	#4	4'-11"	—
v2	172	#4	4'-9"	—
Concrete Structures		Cu. Yd.	47.0	
Reinforcement Bars		Pound	4970	
Name Plates		Each	1	
Test Pile Metal Shells		Each	2	
Metal Shell Piles 14"		Foot	705	

See Sheet 12 for Pile Details

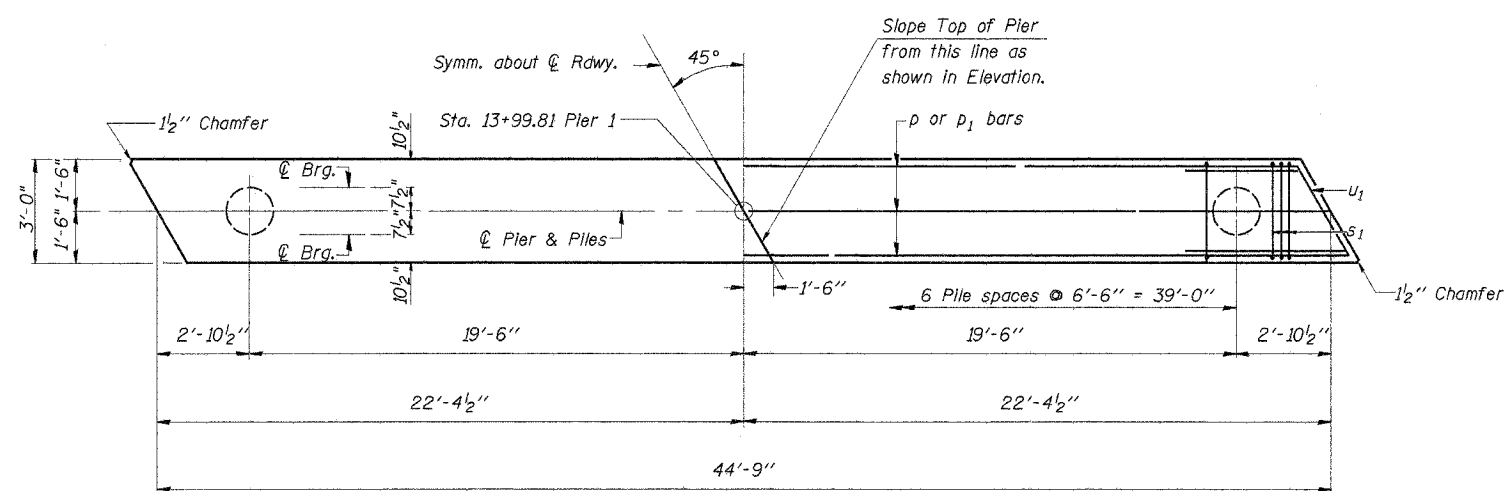
ABUTMENTS

SECTION 01-11126-00-BR
 DOUGLAS ROAD DISTRICT
 IROQUOIS COUNTY
 STATION 14+69.94

DESIGNED	P.S.L.
CHECKED	S.F.M.
DRAWN	S.A.P. & J.P.S.
CHECKED	S.F.M.

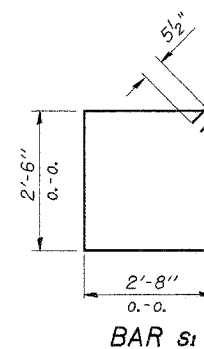
ROUTE NO.	SECTION	COUNTY	TOTAL SHEETS	SHEET NO.
T.R. 159	01-11126-00-BR	IROQUOIS	23	10
DOUGLAS ROAD DIST.		ILLINOIS	BROS-075(12B)	

CONTRACT NO. 87300

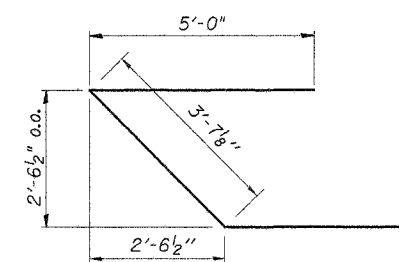


PLAN

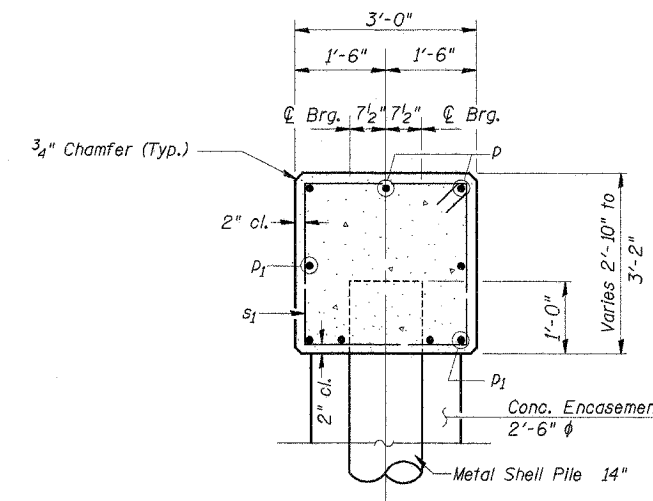
Note: All edges shall have standard 3/4" chamfer except as noted.



BAR s1



BAR u1



SECTION A-A

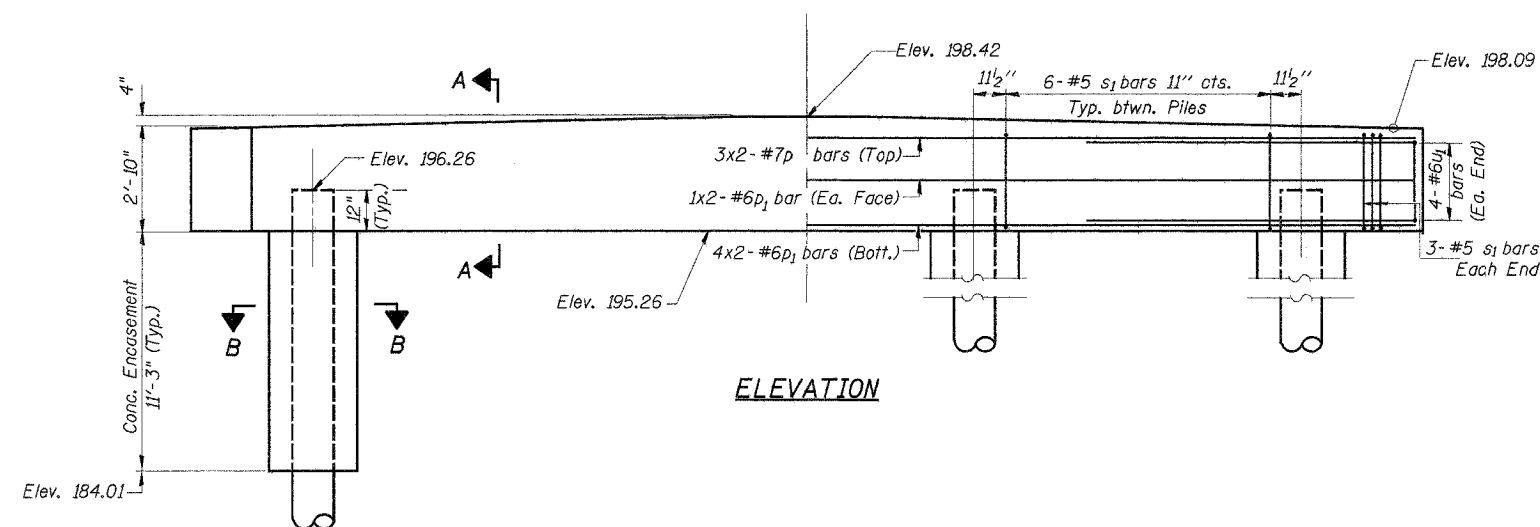
MINIMUM BAR LAP

#6 = 2'-0"
#7 = 2'-9"

BILL OF MATERIAL

BAR	NO.	SIZE	LENGTH	SHAPE
p	6	#7	23'-7"	—
p1	12	#6	23'-3"	—
s1	42	#5	11'-3"	□
u1	8	#6	13'-7"	▽
Concrete Structures			Cu. Yd.	14.6
Reinforcement Bars			Pound	1370
Metal Shell Piles 14"			Foot	560
Conc. Encasement			Cu. Yd.	11.2

See Sheet 12 For Pile Details

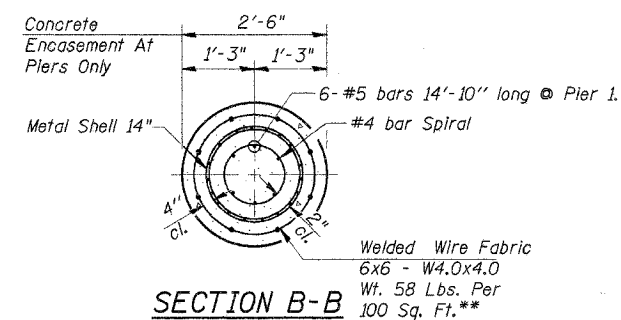


ELEVATION

PILE DATA

Type & Size.....Metal Shell - 14 in. Dia. x 0.250 in. walls
No. Req'd.....7
Nominal Required Bearing.....390 kips
Allowable Resistance Available.....130 kips
Estimated Length.....80 ft.

** The cost of Reinforcement is incidental to the cost of "Conc. Encasement".
Extend Reinforcement 1'-0" into cap.



SECTION B-B
PILE ENCASEMENT DETAIL

DESIGNED	P.S.L.
CHECKED	S.F.M.
DRAWN	S.A.P. & J.P.S.
CHECKED	S.F.M.

PIER 1

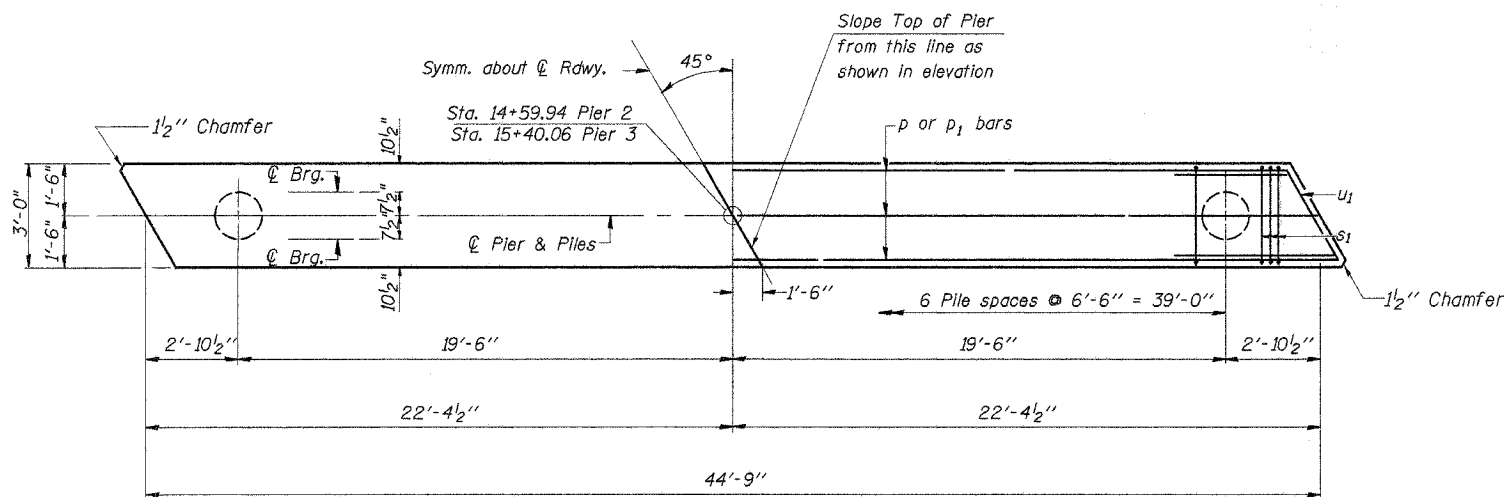
SECTION 01-11126-00-BR
DOUGLAS ROAD DISTRICT
IROQUOIS COUNTY
STATION 14+69.94

4440 ASH GROVE SPRINGFIELD, IL 62711 (217) 799-9600 www.fehr-graham.com	FEHR-GRAHAM & ASSOCIATES, LLC ENGINEERING AND SCIENCE CONSULTANTS REPORTS, SURVEYING, SOILS, & WATER IN SPRINGFIELD, IL	JOB NO.: 46815 FILE: 0228PIER.DGN DATE: 12/08/06
--	--	--

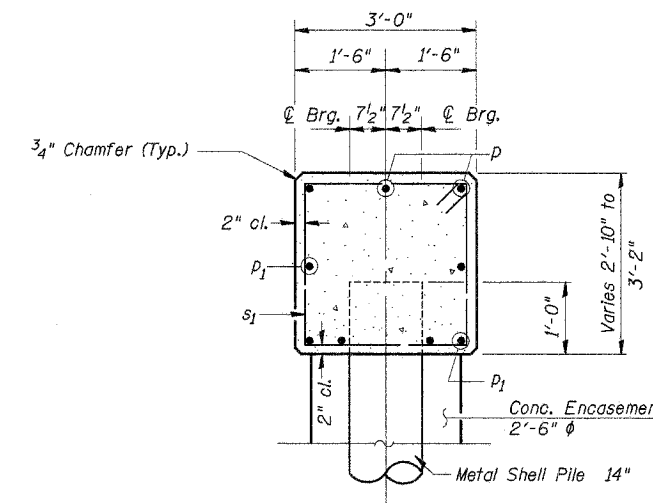
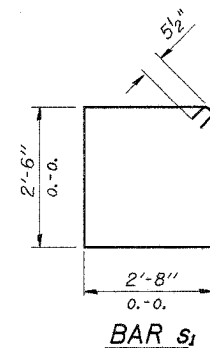
ROUTE NO.	SECTION	COUNTY	TOTAL SHEETS	SHEET NO.
T.R. 159	01-11126-00-BR	IROQUOIS	23	11
DOUGLAS ROAD DIST.		ILLINOIS	BROS-075(128)	

CONTRACT NO. 87300

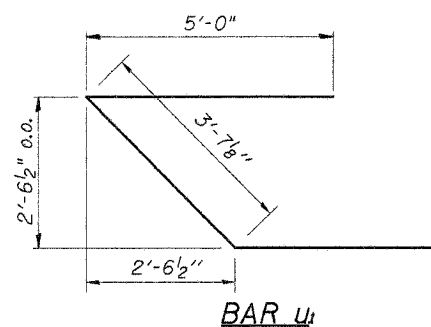
Note: All edges shall have standard 3/4" chamfer except as noted.



PLAN



SECTION A-A (At Rt. L's)

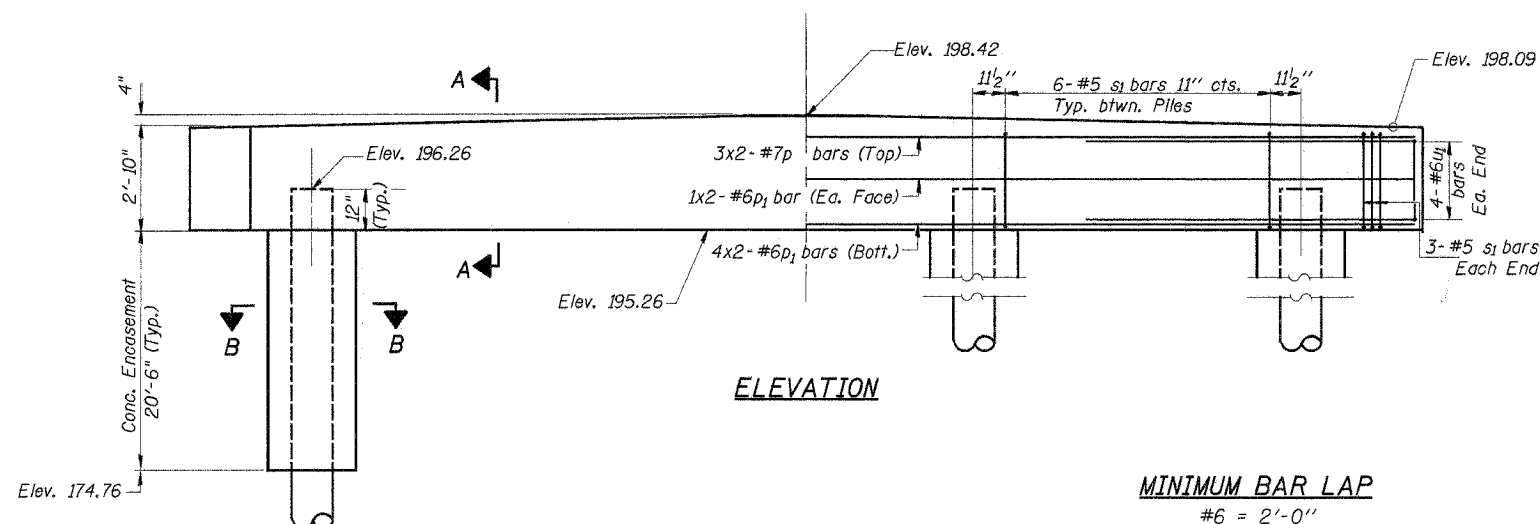


BAR u₁

BILL OF MATERIAL - 2 PIERS

BAR	NO.	SIZE	LENGTH	SHAPE
p	12	#7	23'-7"	—
p ₁	24	#6	23'-3"	—
s ₁	84	#5	11'-3"	□
u ₁	16	#6	13'-7"	—
Concrete Structures			Cu. Yd.	29.2
Reinforcement Bars			Pound	2730
Metal Shell Piles 14"			Foot	1040
Test Pile Metal Shells			Each	1
Conc. Encasement			Cu. Yd.	40.8

See Sheet 12 For Pile Details



ELEVATION

MINIMUM BAR LAP

#6 = 2'-0"
#7 = 2'-9"

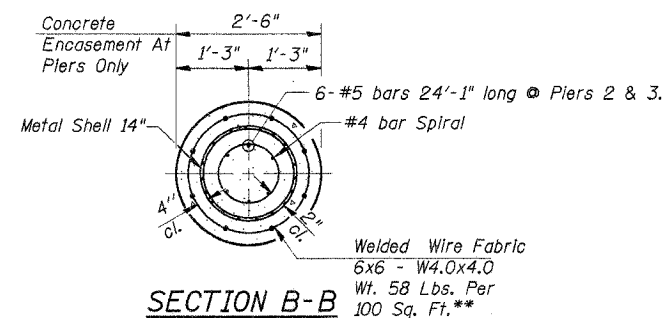
PILE DATA

Type & Size..... Metal Shell - 14 in. Dia. x 0.250 in. walls
No. Req'd. (2 Piers) *14
Nominal Required Bearing..... 408 kips
Allowable Resistance Available..... 136 kips
Estimated Length..... 80 ft.

*Includes 1 Test Pile to be driven in a permanent location at pier 2.

The test piles shall be driven to 110 percent of the Nominal Required Bearing Indicated above.

** The cost of Reinforcement is incidental to the cost of "Conc. Encasement". Extend Reinforcement 1'-0" into cap.



PILE ENCASEMENT DETAIL

DESIGNED	P.S.L.
CHECKED	S.F.M.
DRAWN	S.A.P. & J.P.S.
CHECKED	S.F.M.

PIERS 2 & 3

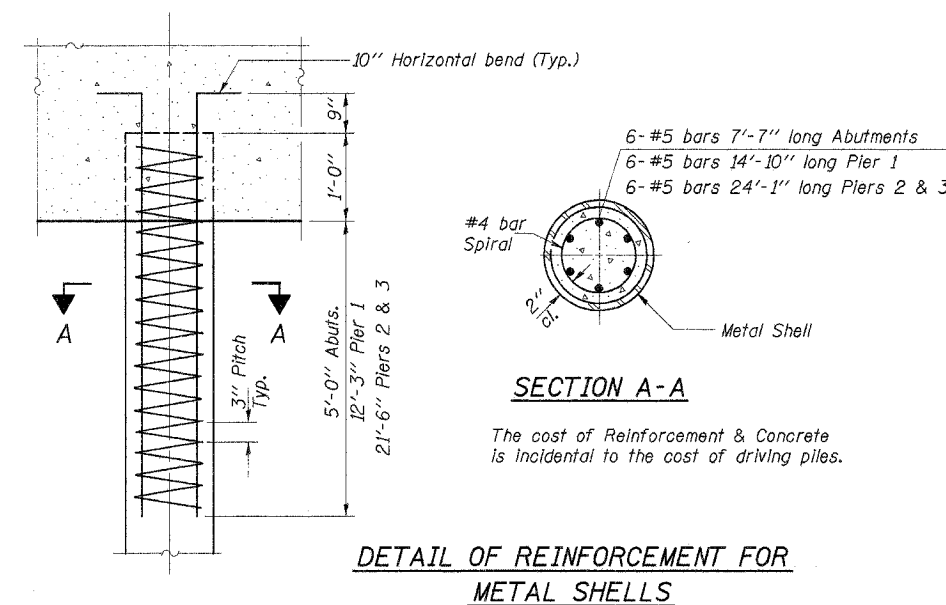
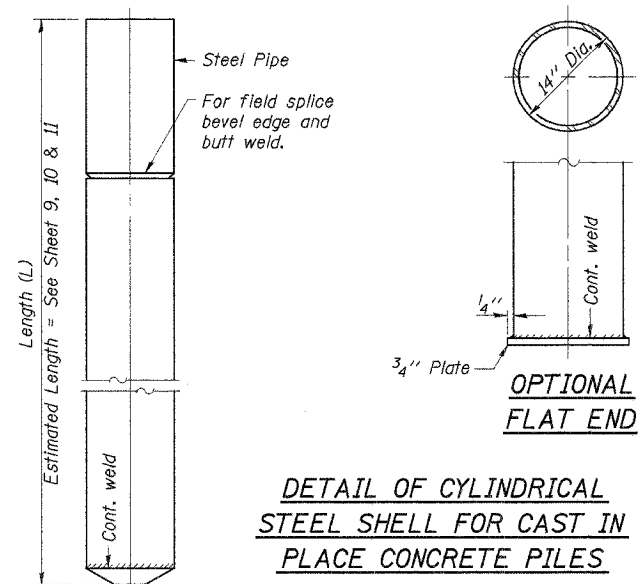
SECTION 01-11126-00-BR
DOUGLAS ROAD DISTRICT
IROQUOIS COUNTY
STATION 14+69.94

4440 ASH GROVE SPRINGFIELD, IL 62711 (217) 793-8600 www.fehr-graham.com	FEHR-GRAHAM & ASSOCIATES, LLC ENGINEERING AND SCIENCE CONSULTANTS FERRIS, ROCKFORD, ROCKFORD, ILLINOIS	JOB NO.: 46815 FILE: 0228PIER2.DGN DATE: 12/08/06
--	---	---

ROUTE NO.	SECTION	COUNTY	TOTAL SHEETS	SHEET NO.
T.R. 159	01-11126-00-BR	IROQUOIS	23	12
DOUGLAS ROAD DIST.	ILLINOIS	BROS-075(128)		

CONTRACT NO. 87300

Notes: Driving and bearing ends of pipe shall be cut square. The thickness of the shell shall be 0.25 inches with a tolerance of 5%. The shell shall be in accordance with ASTM A 252 Grade 3.



DESIGNED	P.S.L.
CHECKED	S.F.M.
DRAWN	S.A.P. & J.P.S.
CHECKED	S.F.M.

PILE DETAILS
SECTION 01-11126-00-BR
DOUGLAS ROAD DISTRICT
IROQUOIS COUNTY
STATION 14+69.94

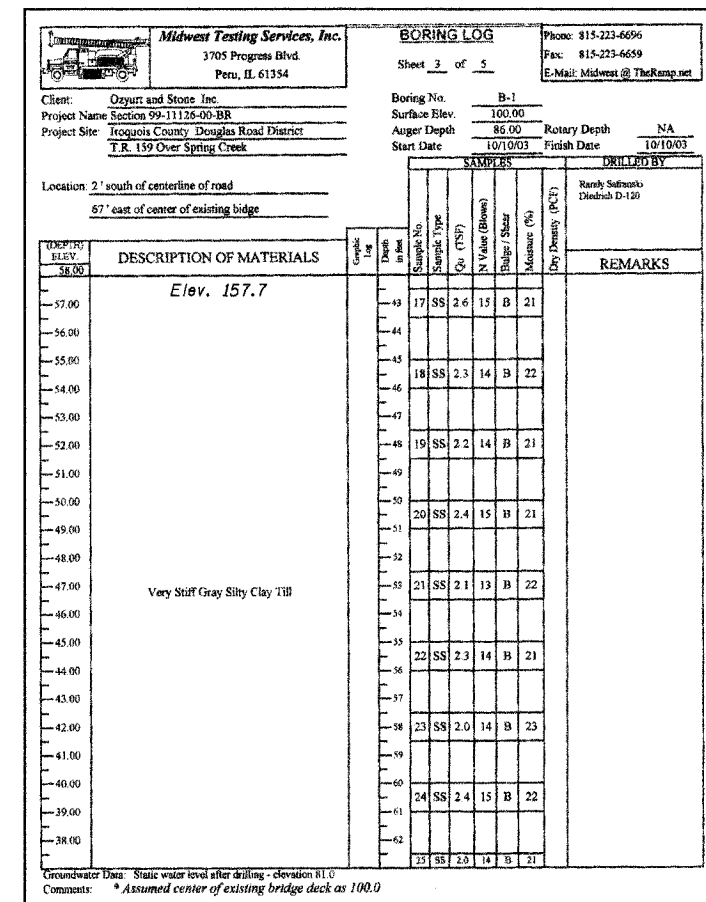
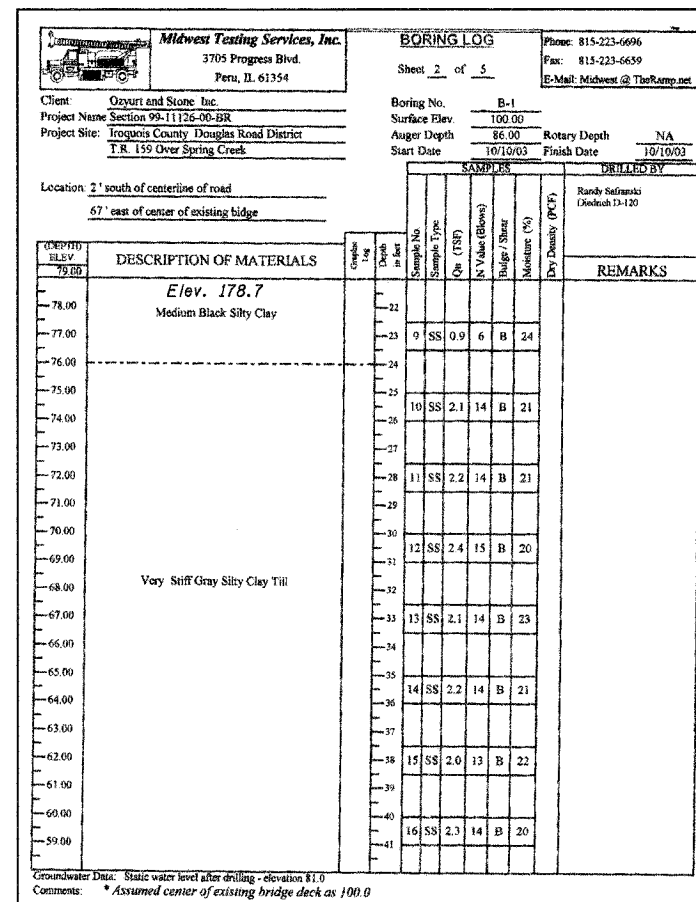
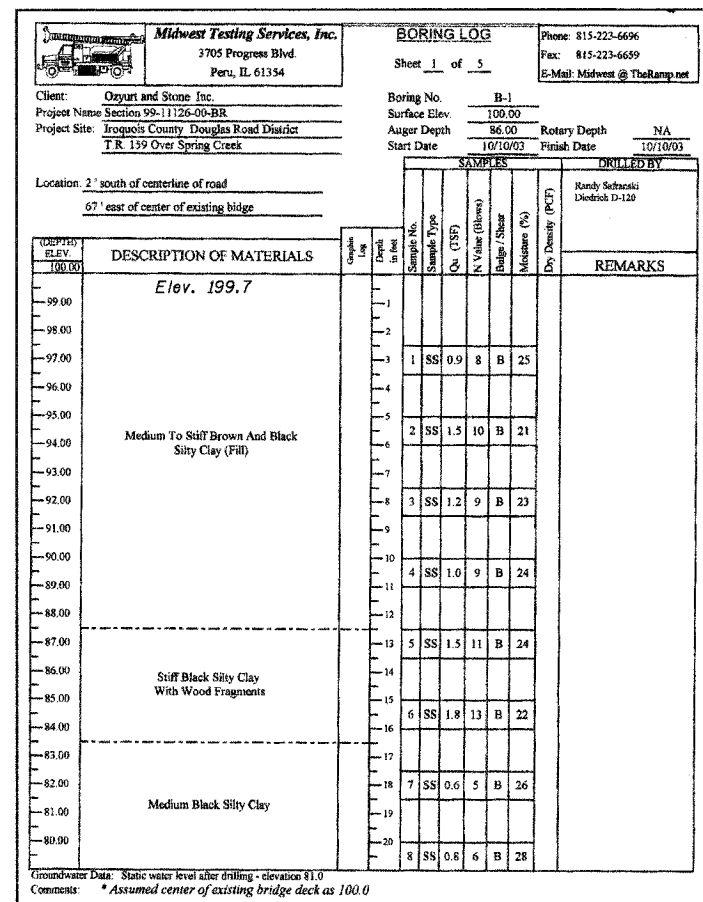
4440 ASH GROVE
SPRINGFIELD, IL 62711
(217) 793-8600
www.fehr-graham.com

FEHR-GRAHAM & ASSOCIATES, LLC
ENGINEERING AND SCIENCE CONSULTANTS
FERRISVILLE, ROCKFORD, ILLINOIS, SPRINGFIELD, ILLINOIS

JOB NO.: 46815
FILE: 0228PFILES.DGN
DATE: 12/08/06

ROUTE NO.	SECTION	COUNTY	TOTAL SHEETS	SHEET NO.
T.R. 159	01-11126-00-BR	IROQUOIS	23	13
DOUGLAS ROAD DIST.		ILLINOIS	BROS-075(128)	

CONTRACT NO. 87300



DESIGNED	P.S.L.
CHECKED	S.F.M.
DRAWN	S.A.P. & J.P.S.
CHECKED	S.F.M.

SOIL BORING
SECTION 01-11126-00-BR
DOUGLAS ROAD DISTRICT
IROQUOIS COUNTY
STATION 14+69.94

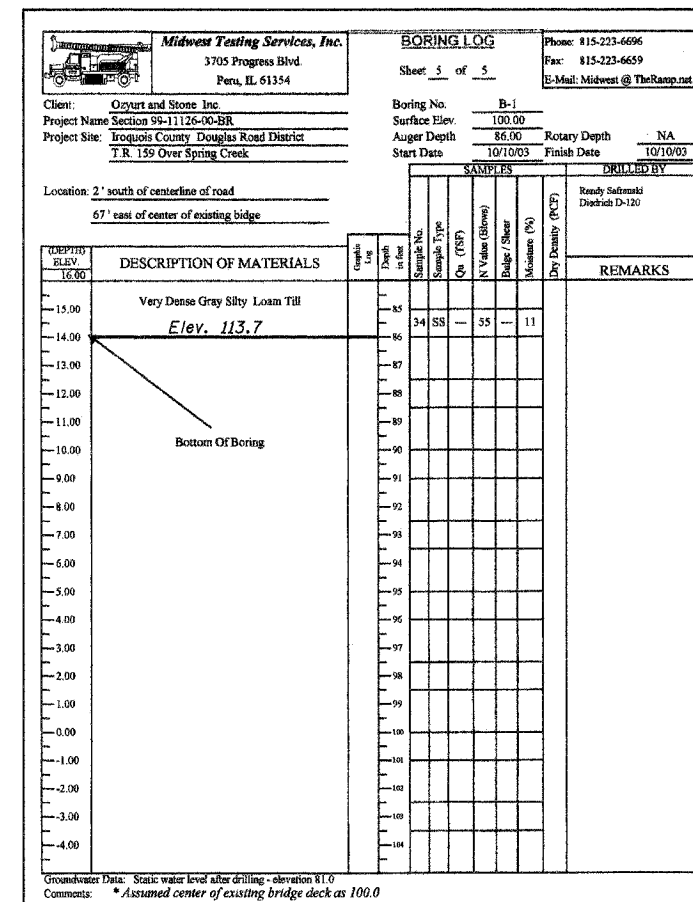
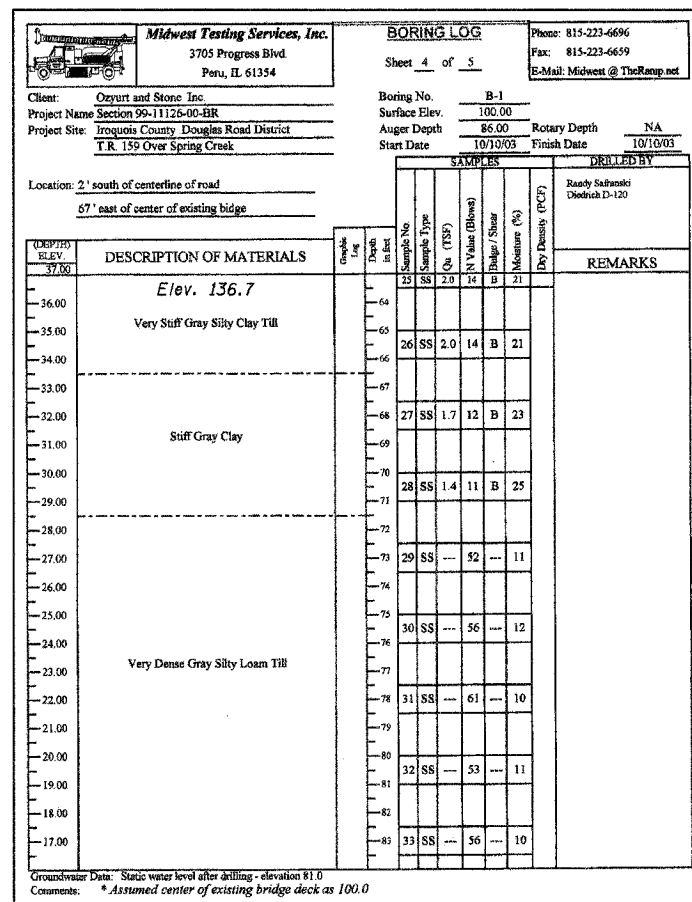
4440 ASH GROVE
SPRINGFIELD, IL 62711
(217) 783-8600
www.fehr-graham.com

FEHR-GRAHAM & ASSOCIATES, LLC
ENGINEERING AND SCIENCE CONSULTANTS
FREDERICK A. BOGARDUS, P.E., MICHAEL E. BOGARDUS, P.E., SPRINGFIELD, IL

JOB NO.: 46815
FILE: boring1.dgn
DATE: 11/06/06

ROUTE NO.	SECTION	COUNTY	TOTAL SHEETS	SHEET NO.
T.R. 159	01-11126-00-BR	IROQUOIS	23	14
DOUGLAS ROAD DIST.		ILLINOIS	BROS-075(128)	

CONTRACT NO. 87300



DESIGNED	P.S.L.
CHECKED	S.F.M.
DRAWN	S.A.P. & J.P.S.
CHECKED	S.F.M.

SOIL BORING
SECTION 01-11126-00-BR
DOUGLAS ROAD DISTRICT
IROQUOIS COUNTY
STATION 14+69.94

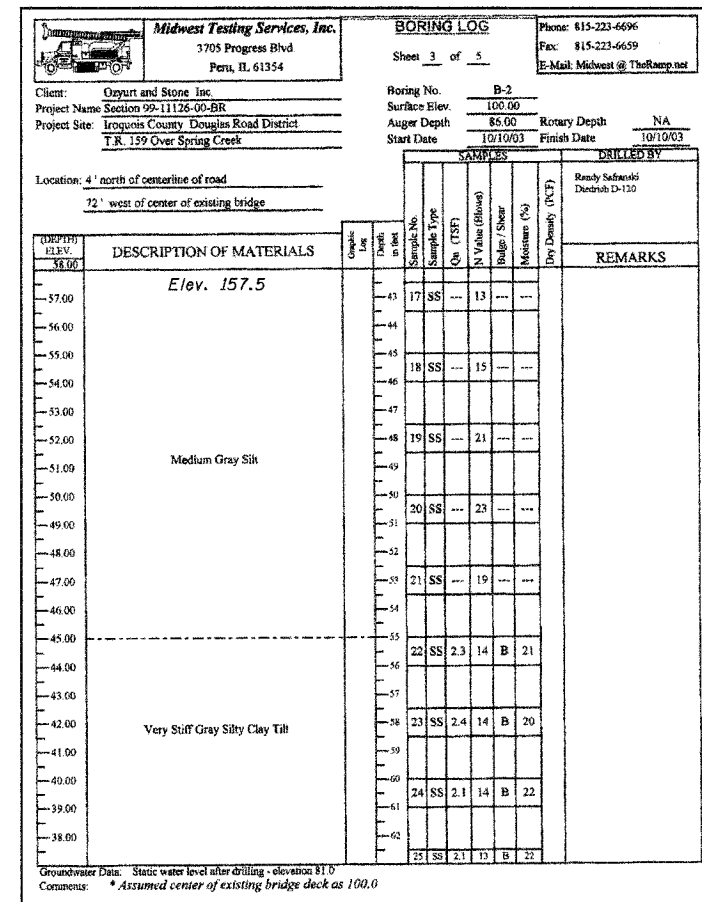
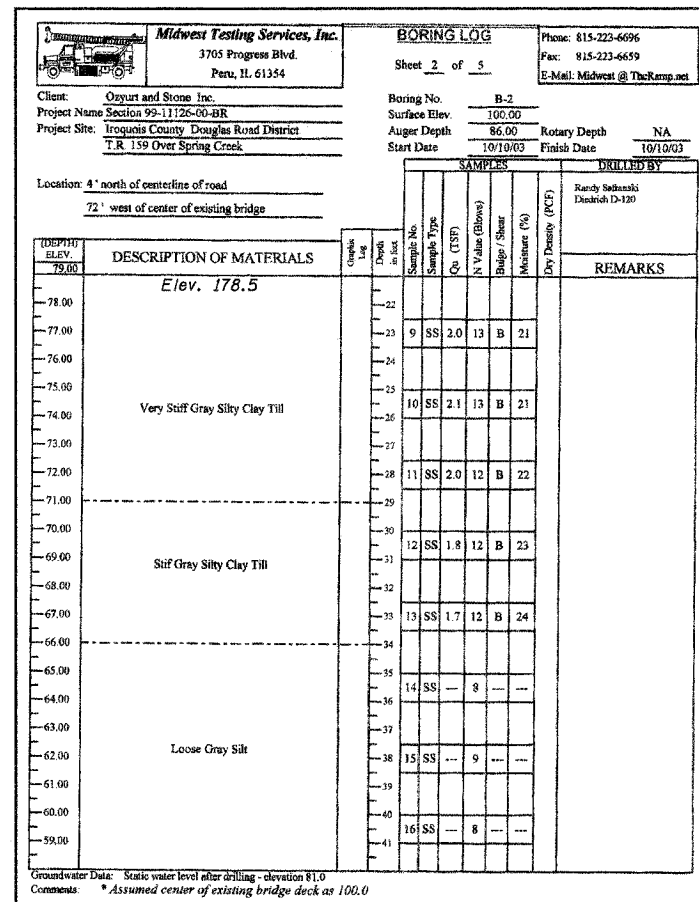
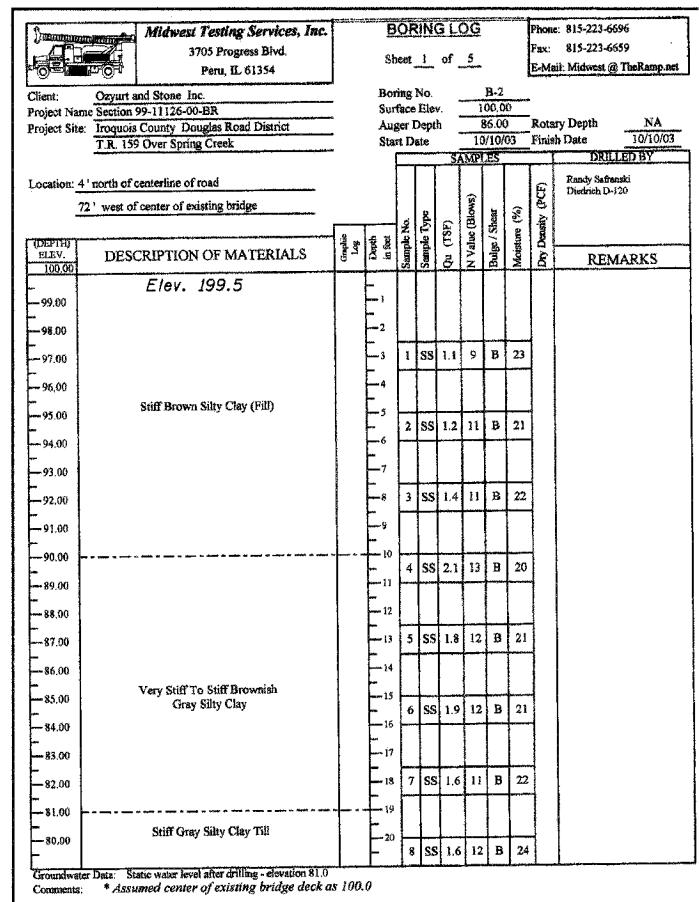
4440 ASH GROVE
SPRINGFIELD, IL 62711
(217) 793-8600
www.fehr-graham.com

FEHR-GRAHAM & ASSOCIATES, LLC
ENGINEERING AND SCIENCE CONSULTANTS
PROFESSIONAL ENGINEERS, ARCHITECTS, SURVEYORS

JOB NO.: 46815
FILE: boring1-2.dgn
DATE: 11/06/06

ROUTE NO.	SECTION	COUNTY	TOTAL SHEETS	SHEET NO.
T.R. 159	01-11126-00-BR	IROQUOIS	23	15
DOUGLAS ROAD DIST.		ILLINOIS	BROS-075(12B)	

CONTRACT NO. 87300



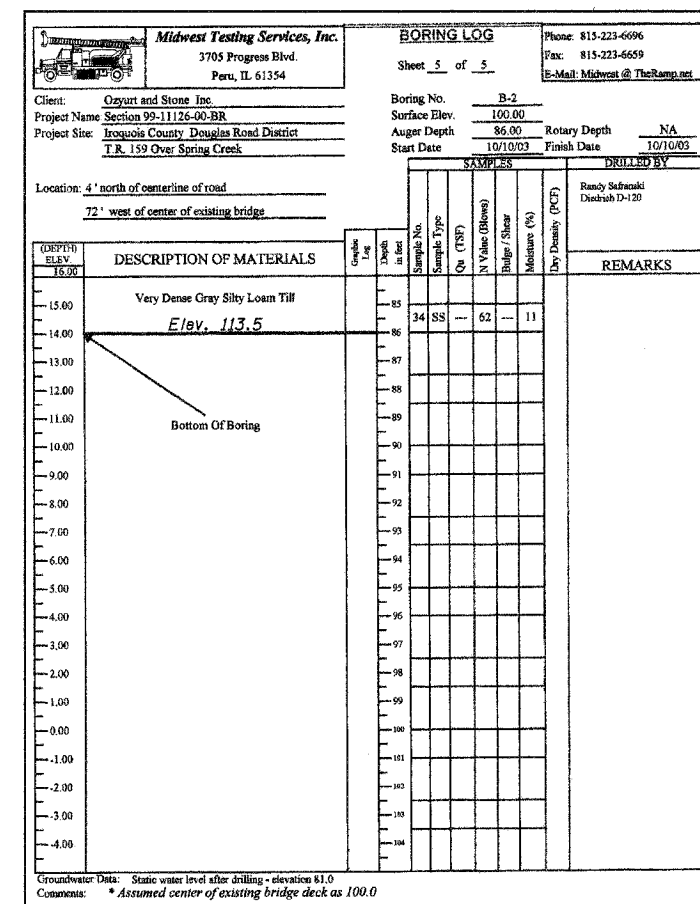
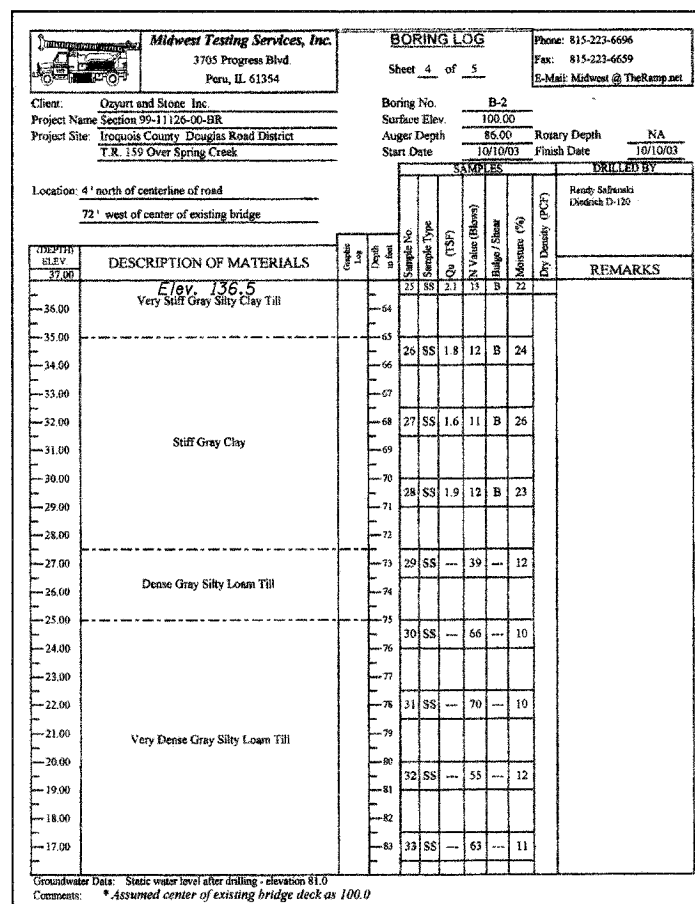
DESIGNED	P.S.L.
CHECKED	S.F.M.
DRAWN	S.A.P. & J.P.S.
CHECKED	S.F.M.

SOIL BORING
SECTION 01-11126-00-BR
DOUGLAS ROAD DISTRICT
IROQUOIS COUNTY
STATION 14+69.94

4440 ASH GROVE SPRINGFIELD, IL 62711 (217) 793-8600 www.fehr-graham.com	FEHR-GRAHAM & ASSOCIATES, LLC ENGINEERING AND SCIENCE CONSULTANTS FRANCIS A. ROEDIGER, P.E., MICHELLE L. ROEDIGER, M.S.E., PH.D.	JOB NO.: 46815 FILE: boring2.dgn DATE: 11/06/06
--	---	---

ROUTE NO.	SECTION	COUNTY	TOTAL SHEETS	SHEET NO.
T.R. 159	01-11126-00-BR	IROQUOIS	23	16
DOUGLAS ROAD DIST.		ILLINOIS	BROS-075(128)	

CONTRACT NO. 87300



DESIGNED	P.S.L.
CHECKED	S.F.M.
DRAWN	S.A.P. & J.P.S.
CHECKED	S.F.M.

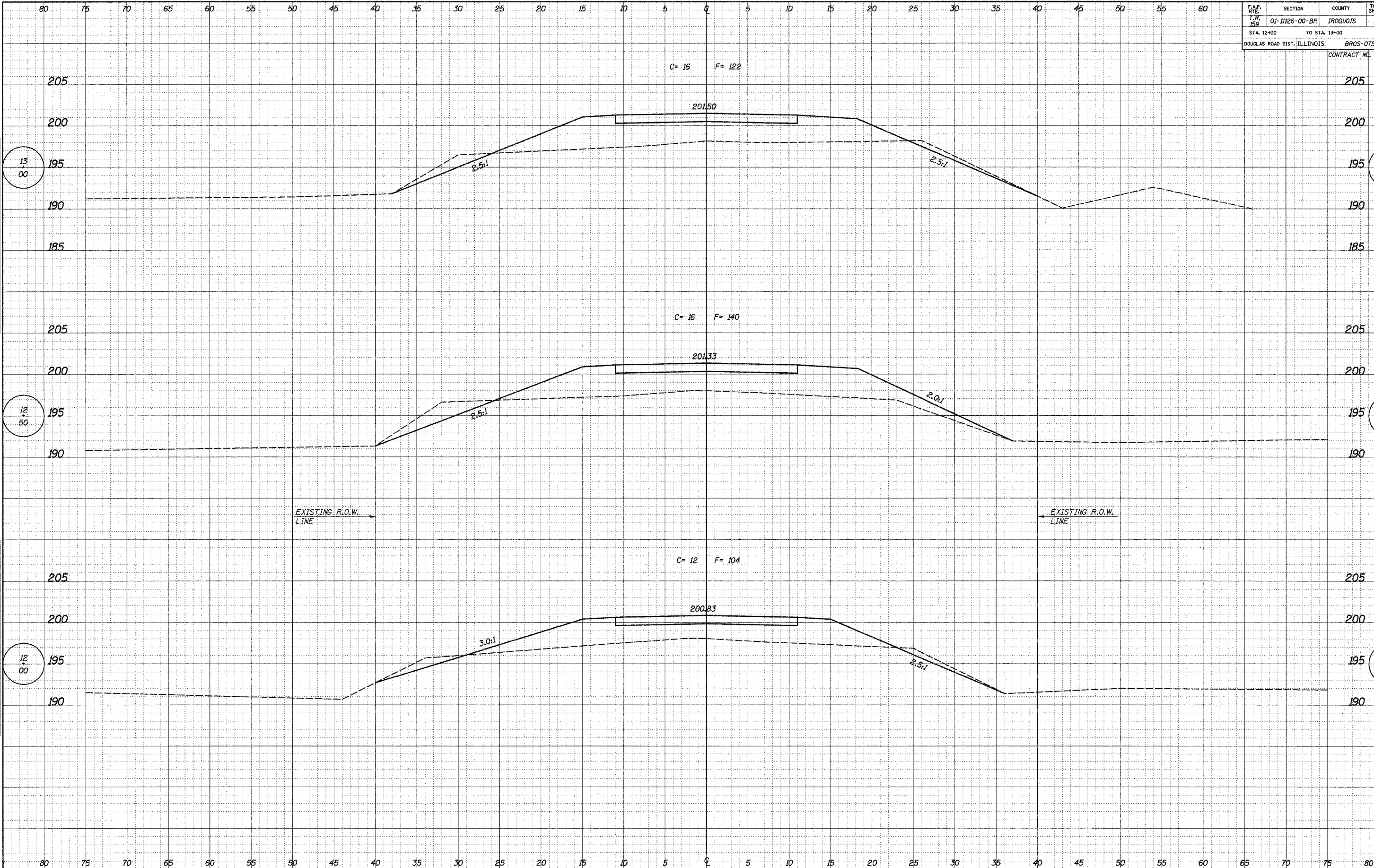
SOIL BORING
SECTION 01-11126-00-BR
DOUGLAS ROAD DISTRICT
IROQUOIS COUNTY
STATION 14+69.94

4440 ASH GROVE
SPRINGFIELD, IL 62711
(217) 793-8600
www.fehr-graham.com

FEHR-GRAHAM & ASSOCIATES, LLC
ENGINEERING AND SCIENCE CONSULTANTS
FREDRICK A. ROCKFORD, L. ROCKFORD, L. MORRIS, M. SPRINGFIELD, ILL.

JOB NO.: 46815
FILE: boring2-2.dgn
DATE: 11/06/06

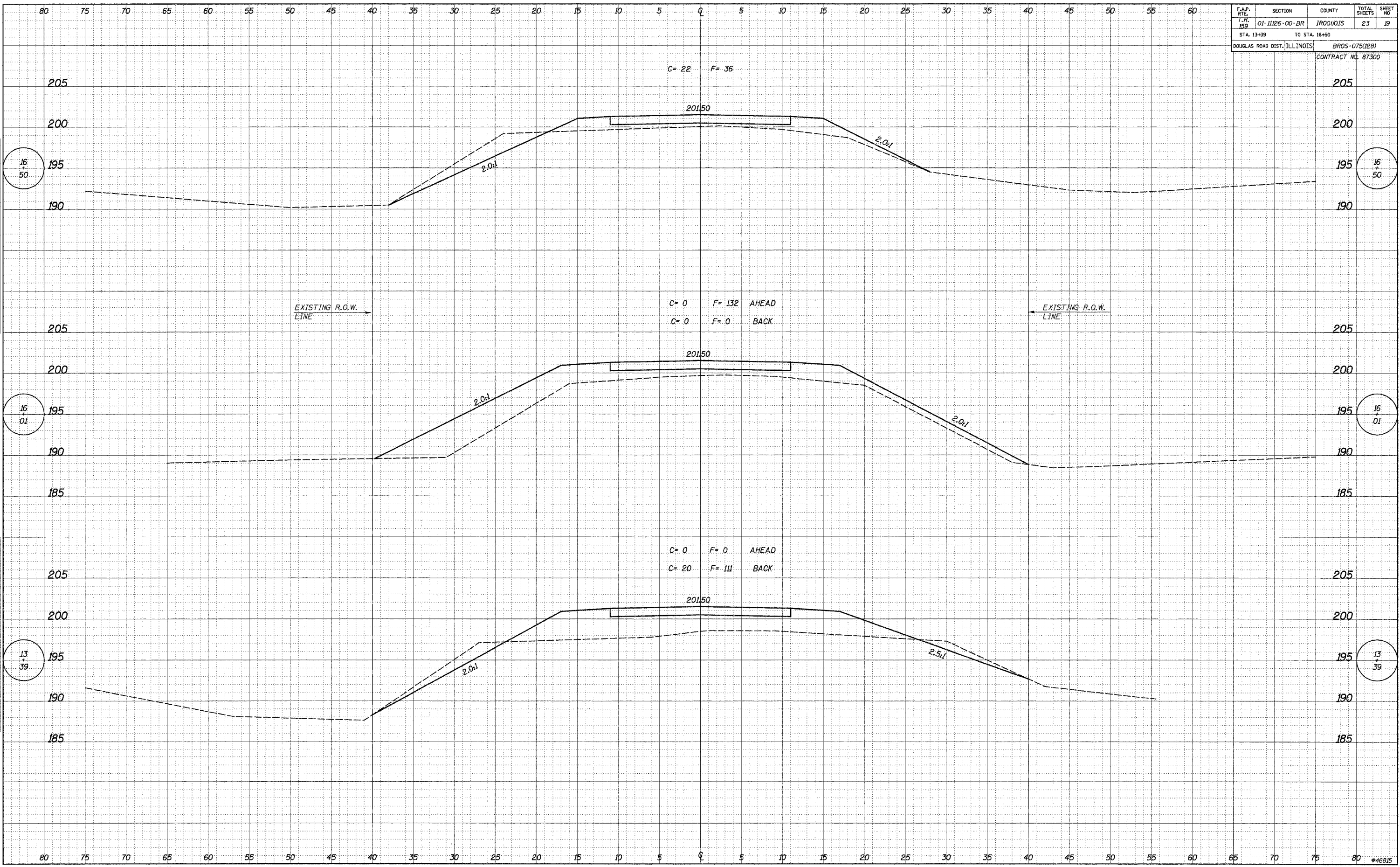
F.A.P. R.T.E.	SECTION	COUNTY	TOTAL SHEETS	SHEET NO.
1, R. 159	01-11126-00-BR	JROQUOIS	23	13
STA. 12+00	TO STA. 13+00			
DOUGLAS ROAD DIST., ILLINOIS		BROS-075(128)		
CONTRACT NO. 87300				



FINAL SURVEY BY DATE
 SURVEYED BY DATE
 NOTE BOOK NO.
 TEMPLATE NO.
 AREAS CHECKED
 AREAS CHECKED

ORIGINAL SURVEY BY DATE
 SURVEYED BY DATE
 NOTE BOOK NO.
 TEMPLATE NO.
 AREAS CHECKED
 AREAS CHECKED

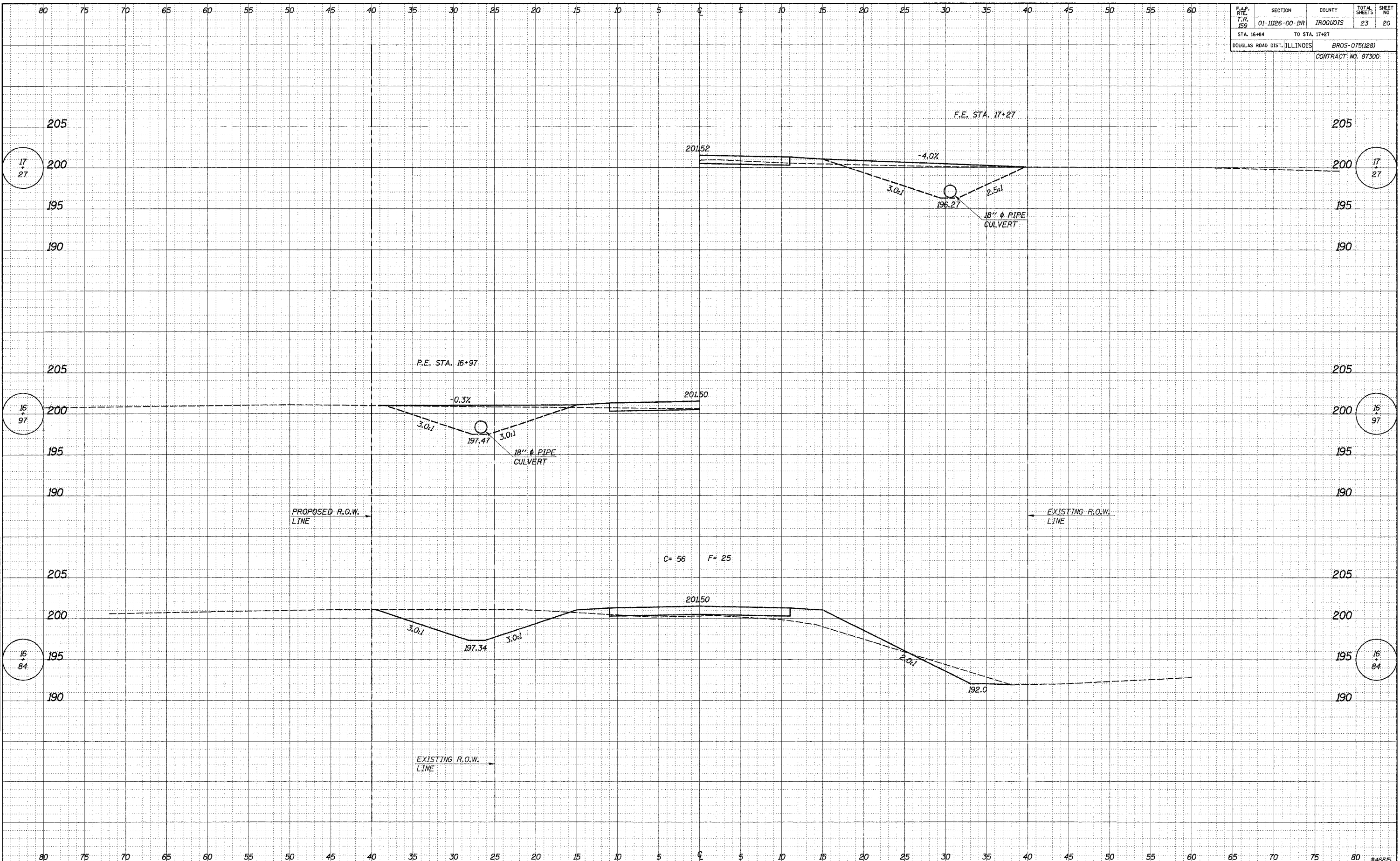
F.A.P. RTE.	SECTION	COUNTY	TOTAL SHEETS	SHEET NO.
159	01-11126-00-BR	IRROQUOIS	23	19
STA. 13+39		TO STA. 16+50		
DOUGLAS ROAD DIST., ILLINOIS		BROS-075(128)		
CONTRACT NO. 87300				



FINAL SURVEYED BY DATE
 SURVEYED BY DATE
 NOTE BOOK NO.
 TEMPLATE NO.
 AREAS CHECKED

ORIGINAL SURVEYED BY DATE
 SURVEYED BY DATE
 NOTE BOOK NO.
 TEMPLATE NO.
 AREAS CHECKED

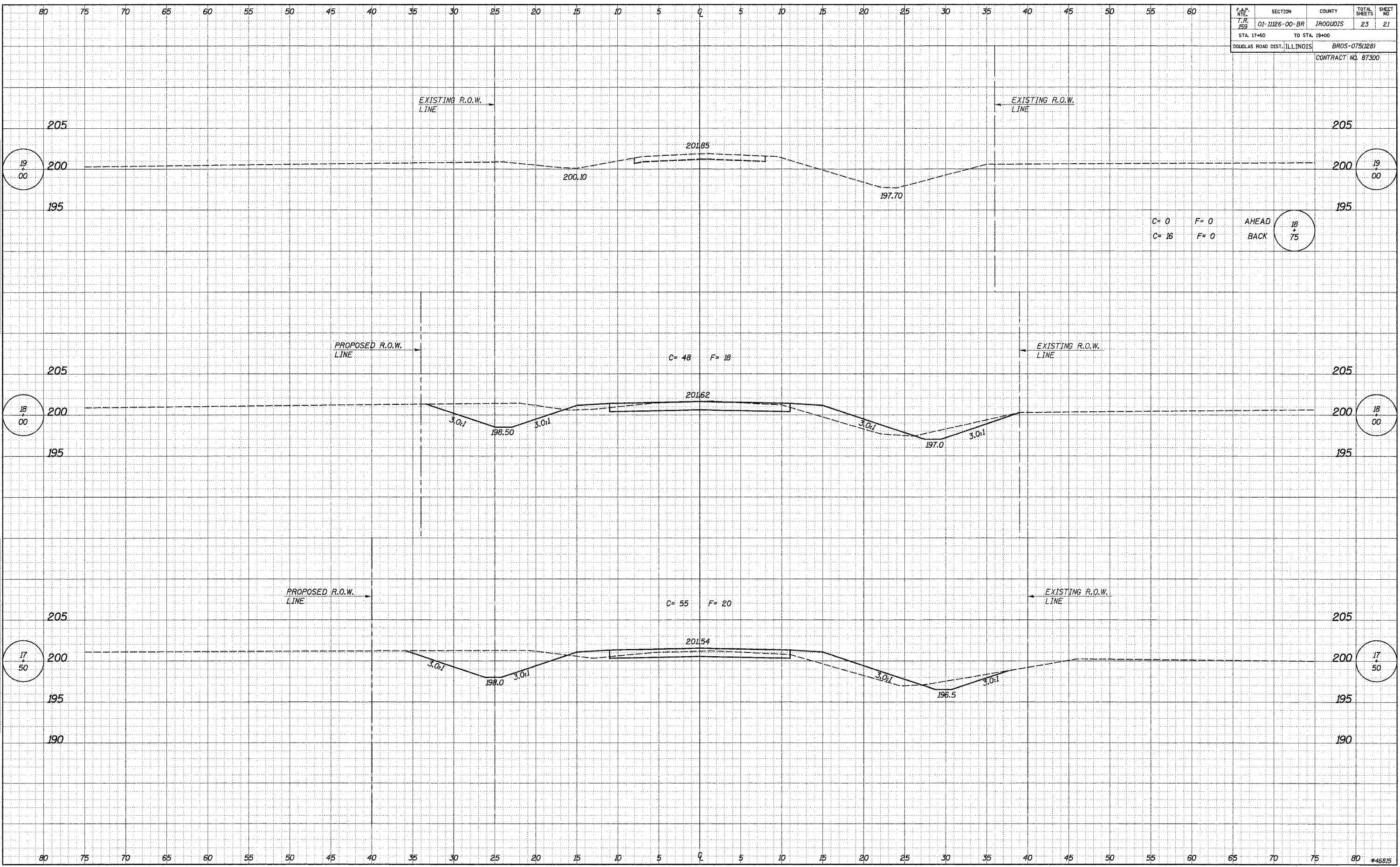
F.A.P. RTE.	SECTION	COUNTY	TOTAL SHEETS	SHEET NO.
T.P. 159	01-11126-00-BR	IRROQUOIS	23	20
STA. 16+84		TO STA. 17+27		
DOUGLAS ROAD DIST., ILLINOIS		BROS-075(128)		
CONTRACT NO. 87300				



DATE	BY
DATE	BY
DATE	BY
DATE	BY
DATE	BY

DATE	BY
DATE	BY
DATE	BY
DATE	BY
DATE	BY

F.A.P. RTE.	SECTION	COUNTY	TOTAL SHEETS	SHEET NO.
T.P. 158	01-1126-00-BR	IRROQUOIS	23	21
STA. 17+50		TO STA. 19+00		
DOUGLAS ROAD DIST., ILLINOIS		BROS-075(128)		
CONTRACT NO. 87300				



C= 0 F= 0 AHEAD
C= 16 F= 0 BACK

DATE _____ BY _____
SURVEYED _____
NOTE BOOK _____
NO. _____

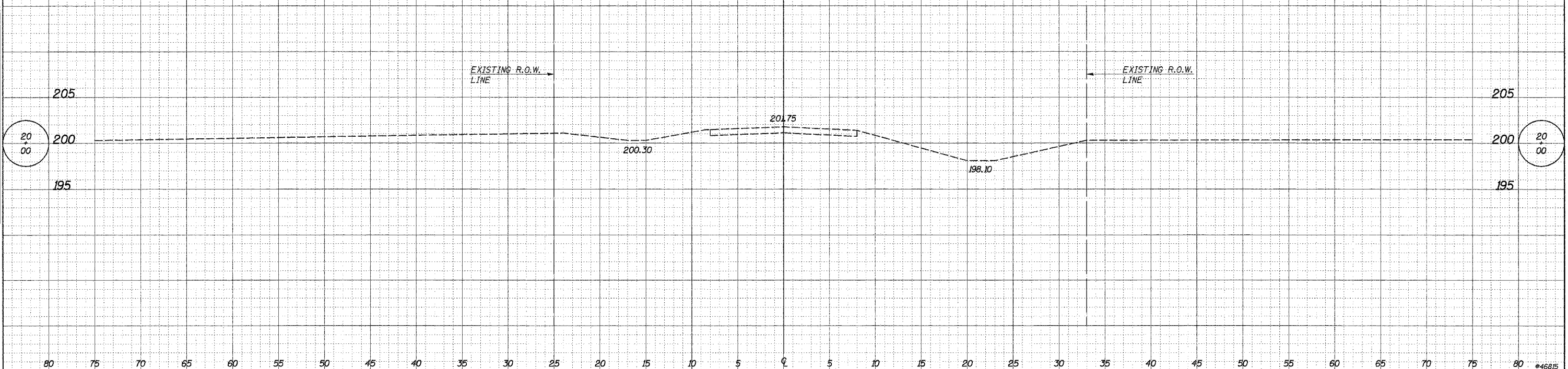
DATE _____ BY _____
SURVEYED _____
NOTE BOOK _____
NO. _____

80 75 70 65 60 55 50 45 40 35 30 25 20 15 10 5 0 5 10 15 20 25 30 35 40 45 50 55 60

F.A.P. RTE. T. # 159	SECTION 01-1126-00-BR	COUNTY IROQUOIS	TOTAL SHEETS 23	SHEET NO. 22
STA. 20+00		DOUBLAS ROAD DIST. ILLINOIS		
		BROS-075(128)		
		CONTRACT NO. 87300		

FINAL SURVEY NOTE BOOK NO. _____
BY _____ DATE _____
SURVEYED _____
TEMPLATE _____
AREAS CHECKED _____

ORIGINAL SURVEY NOTE BOOK NO. _____
BY _____ DATE _____
SURVEYED _____
TEMPLATE _____
AREAS CHECKED _____

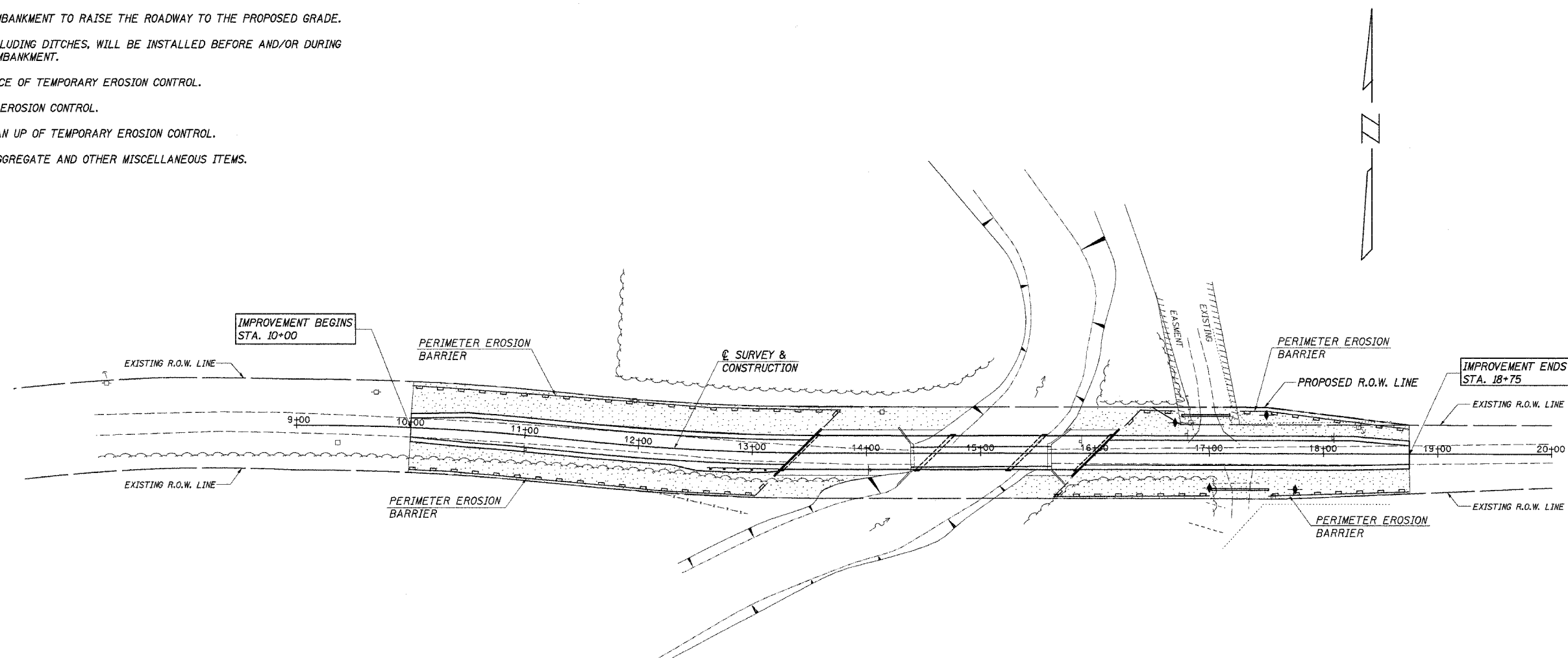


ROUTE NO.	SECTION	COUNTY	TOTAL SHEETS	SHEET NO.
T.R. 159	01-11126-00-BR	IROQUOIS	23	23
DOUGLAS ROAD DIST.	ILLINOIS	BROS-075(128)		

CONTRACT NO. 87300

DESCRIPTION OF INTENDED SEQUENCE OF MAJOR CONSTRUCTION ACTIVITIES WHICH WILL DISTURB EARTH AND LEAD TO POSSIBLE EROSION FOR MAJOR PORTIONS OF THE CONSTRUCTION SITE:

1. PLACEMENT OF PERIMETER EROSION CONTROL FENCE PRIOR TO THE COMMENCEMENT OF ANY ROAD OR BRIDGE WORK. SEE STD. 280001.
2. REMOVAL OF EXISTING STRUCTURE.
3. CONSTRUCTION OF THE REPLACEMENT STRUCTURE.
4. PLACEMENT OF ROADWAY EMBANKMENT TO RAISE THE ROADWAY TO THE PROPOSED GRADE.
5. DRAINAGE STRUCTURES, INCLUDING DITCHES, WILL BE INSTALLED BEFORE AND/OR DURING THE COMPLETION OF THE EMBANKMENT.
6. PLACEMENT AND MAINTENANCE OF TEMPORARY EROSION CONTROL.
7. PLACEMENT OF PERMANENT EROSION CONTROL.
8. REMOVAL AND PROPER CLEAN UP OF TEMPORARY EROSION CONTROL.
9. FINAL GRADING, PLACING AGGREGATE AND OTHER MISCELLANEOUS ITEMS.



TEMPORARY EROSION CONTROL:	
	PERIMETER EROSION BARRIER
	TEMPORARY DITCH CHECK
PERMANENT EROSION CONTROL:	
	SEEDING CLASS 2, FERTILIZERS, & MULCH, METHOD 2

TEMPORARY DITCH CHECKS	
LT. STA. 16+70	= 1
RT. STA. 17+00	= 1
LT. STA. 17+50	= 1
RT. STA. 17+75	= 1
TOTAL = 4 EACH	

BILL OF MATERIAL		
ITEM	UNIT	QUANTITY
TEMPORARY EROSION CONTROL SEEDING	POUND	100
TEMPORARY DITCH CHECKS	EACH	4
PERIMETER EROSION BARRIER	FOOT	1330

THE ABOVE QUANTITIES ARE ESTIMATES ONLY. ACTUAL QUANTITIES FOR EROSION CONTROL WILL BE DETERMINED BY THE ENGINEER IN THE FIELD AND THERE WILL BE NO ADJUSTMENT IN ANY PRICE DUE TO A CHANGE IN PLAN QUANTITY.

EROSION CONTROL PLAN

SECTION 01-11126-00-BR
DOUGLAS ROAD DISTRICT
IROQUOIS COUNTY
STATION 14+69.94

4440 ASH GROVE SPRINGFIELD, IL 62711 (217) 793-8600 www.fehr-graham.com	FEHR-GRAHAM & ASSOCIATES, LLC ENGINEERING AND SCIENCE CONSULTANTS <small>PREPARED BY: ROBERT D. BOGGS, P.E., LICENSE NO. 000000000</small>	JOB NO.: 46815 FILE: EROSION.DGN DATE: 11/06/06
--	---	---