

INDEX OF SHEETS

- 1 = COVER SHEET
- 2 = SUMMARY OF QUANTITIES
- 3 = GENERAL NOTES & SCHEDULES
- 4 = TYPICAL SECTIONS
- 5 = ENTRANCE DETAILS & SUPERELEVATION DIAGRAMS
- 6 = PLAN AND PROFILE
- 7-8 = EROSION CONTROL PLAN
- 9 = GENERAL PLAN AND ELEVATION
- 10 = RIPRAP AND PILE LAYOUT
- 11 = TOP OF SLAB ELEVATIONS
- 12 = FRAMING PLAN
- 13 = SUPERSTRUCTURE
- 14 = DIAPHRAGM DETAILS
- 15 = SOUTH ABUTMENT DETAILS
- 16 = NORTH ABUTMENT DETAILS
- 17 = STEEL RAILING, TYPE SM
- 18 = BAR SPLICER ASSEMBLY DETAILS
- 19 = METAL SHELL PILE DETAILS
- 20 = BORING LOGS
- 21-22 = ROADWAY CROSS SECTIONS

STANDARDS

- 000001-05 STANDARD SYMBOLS, ABBREVIATIONS AND PATTERNS
- 280001-04 TEMPORARY EROSION CONTROL SYSTEMS
- 420401-06 BRIDGE APPROACH PAVEMENT
- 515001-02 NAME PLATE FOR BRIDGES
- 542401 METAL END SECTION FOR PIPE CULVERTS
- 601101 CONCRETE HEADWALL FOR PIPE DRAIN
- 630001-07 STEEL PLATE BEAM GUARDRAIL
- 630301-04 SHOULDER WIDENING FOR GUARDRAIL TYPE I(SPECIAL) GUARDRAIL TERMINALS
- 631032-03 TRAFFIC BARRIER TERMINAL, TYPE 6A
- 635006-02 REFLECTOR AND TERMINAL MARKER PLACEMENT
- 635011-01 REFLECTOR MARKER AND MOUNTING DETAILS
- 701901 TRAFFIC CONTROL DEVICES
- 780001-01 TYPICAL PAVEMENT MARKING
- BLR-21-7 TYPICAL APPLICATION OF TRAFFIC CONTROL DEVICES FOR CONSTRUCTION ON RURAL LOCAL HIGHWAYS
- BLR-22-5 TYPICAL APPLICATION OF TRAFFIC CONTROL DEVICES FOR CONSTRUCTION ON RURAL LOCAL HIGHWAYS

NAME AND ADDRESS OF UTILITIES	TYPE
AmerenCILCO Attn: Deborah Dann (309) 693-4762	ELECTRIC
VERIZON NORTH, INC. Attn: Jonna Fricke (309) 663-3422	TELEPHONE

HIGHWAY CLASSIFICATION: MAJOR COLLECTOR (NON-URBAN)
 DESIGN SPEED: 40 MPH
 ADT = 250
 3R GUIDELINES



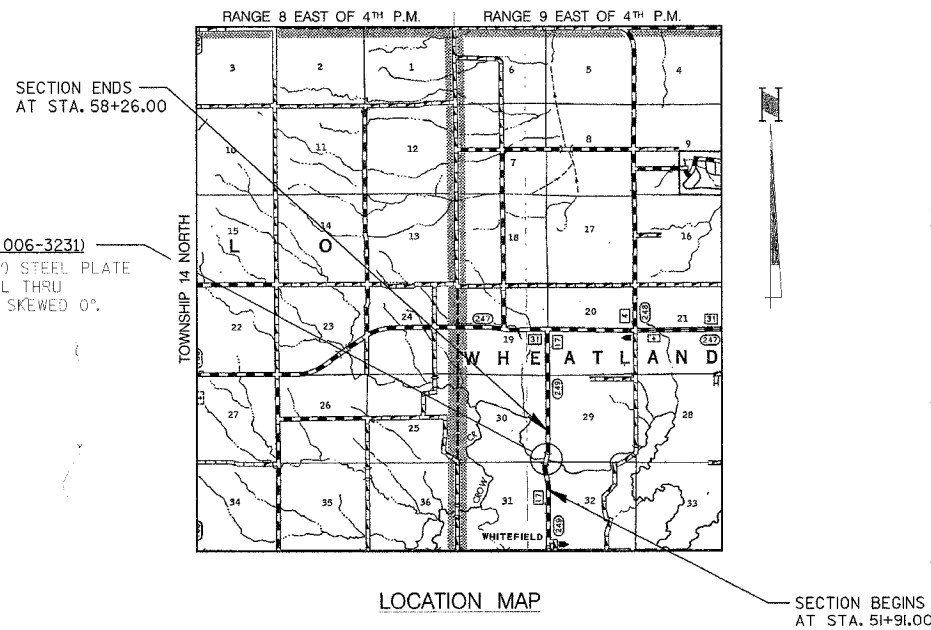
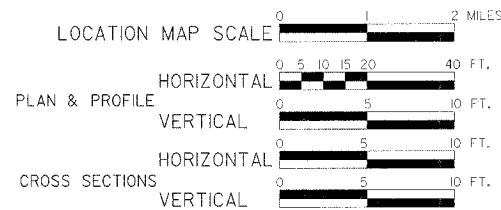
CONTRACT NO. 87365

**STATE OF ILLINOIS
 DEPARTMENT OF TRANSPORTATION
 PLANS FOR PROPOSED
 LOCAL AGENCY IMPROVEMENT
 FEDERAL-AID HBP PROJECT
 HIGHWAY BRIDGE PROGRAM
 FAS 249
 SECTION 03-00190-00-BR/ BUREAU COUNTY
 PROJECT BRS-249(104)
 JOB NO. C-93-092-08
 CONTRACT NO. 87365
 2008**



LOCATION OF SECTION INDICATED THUS: [Symbol]

NET LENGTH 635 FT. = 0.12 MILES



PROPOSED STRUCTURE (S.N. 006-3231)
 A SINGLE SPAN (1 @ 125'-6") STEEL PLATE GIRDER STRUCTURE ON SPILL THRU ABUTMENTS AT STA. 55+01. SKEWED 0°.

ATTENTION CONTRACTORS

THE ILLINOIS DEPARTMENT OF TRANSPORTATION BUREAU OF MATERIALS AND PHYSICAL RESEARCH, "PROJECT PROCEDURES GUIDE" IS APPLICABLE TO THIS PROJECT.

STATE OF ILLINOIS DEPARTMENT OF TRANSPORTATION DIVISION OF HIGHWAYS	
APPROVED	2008
<i>John C. [Signature]</i> COUNTY ENGINEER	
PASSED	2008
<i>Kenneth [Signature]</i> DISTRICT 3 ENGINEER OF LOCAL ROADS & STREETS	
RELEASING FOR BID BASED ON LIMITED REVIEW	2008
<i>George F. [Signature]</i> DEPUTY DIRECTOR OF HIGHWAYS, REGION 2 ENGINEER	



Brian K. Converse
 DATE: APR 4, 2008
 EXPIRES 11/30/09

Plans Prepared By:
WILLET, HOFMANN & ASSOCIATES, INC.
 CONSULTING ENGINEERS
 Land Surveying - Transportation - Structural
 Environmental - Architecture
 809 East Second Street Dixon, Illinois 61021
 Phone 815.284.2881 Fax 815.284.3385
 Design Firm #184-000918
 www.willett-hofmann.com

WHA # 1119005