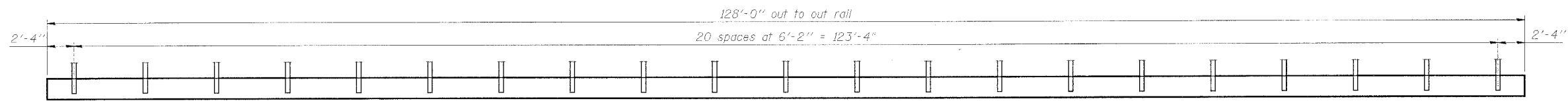
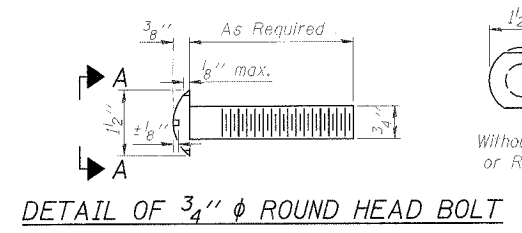


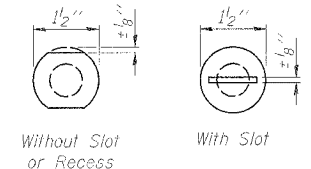
FILE NO.	SECTION	COUNTY	SHEET	SHEET
249	03-00190-00 BR	BUREAU	22	17
FED. ROAD DIST. NO. 7	ALLIANCE	FED. AID PROJECT	BRS-249(104)	
Contract No. 87365				
Structural Sheet 9 of 12				



ELEVATION VIEW

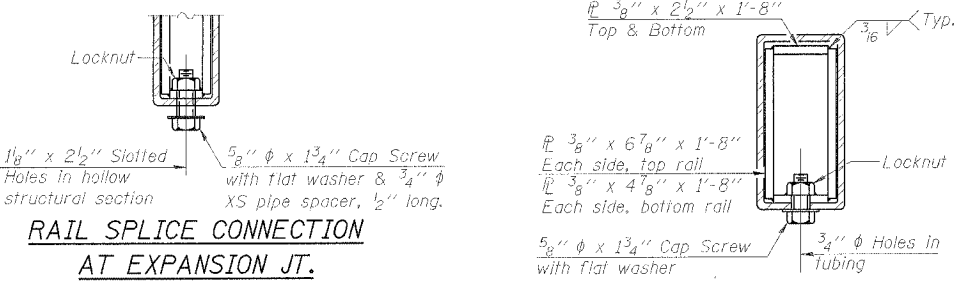


DETAIL OF 3/4" φ ROUND HEAD BOLT

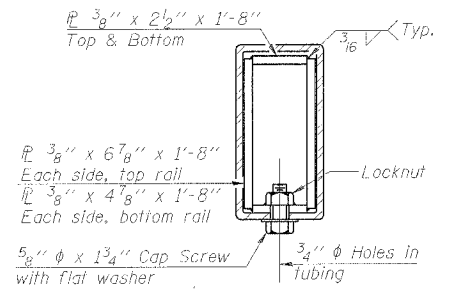


VIEW A-A

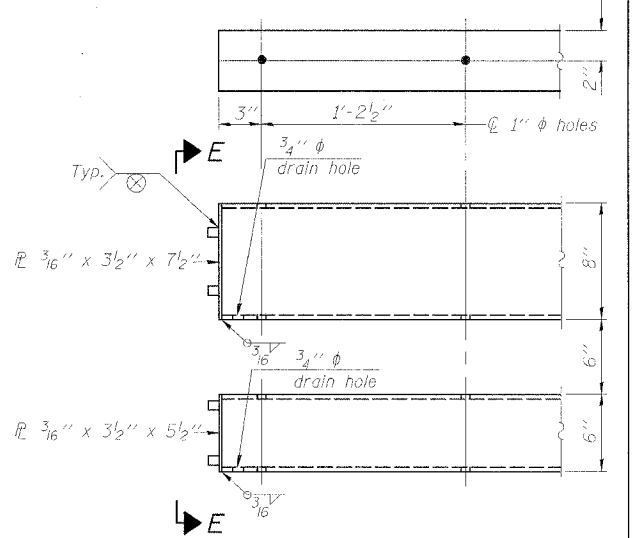
4-3/4" φ x 6" Round Head Bolts (With slot or approved recess in head) with locknut & flat washer. 7/8" φ holes in hollow structural section may be drilled in the field.



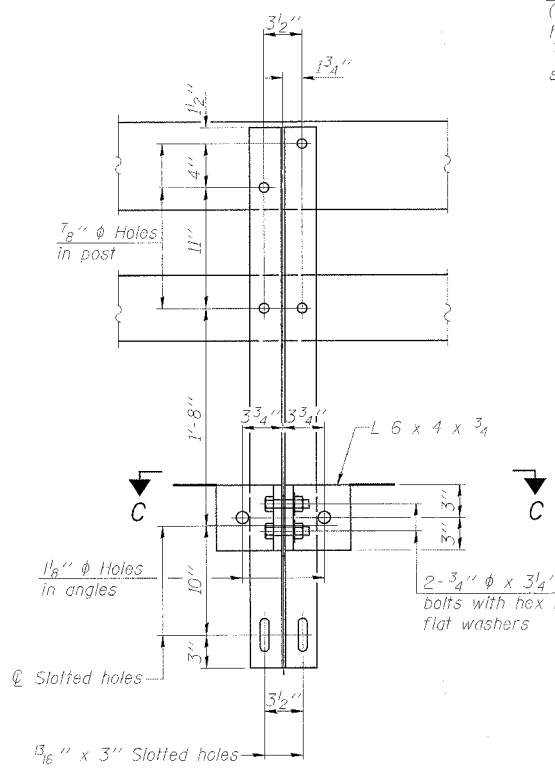
RAIL SPLICE CONNECTION AT EXPANSION JT.



SECTION AT RAIL SPLICE

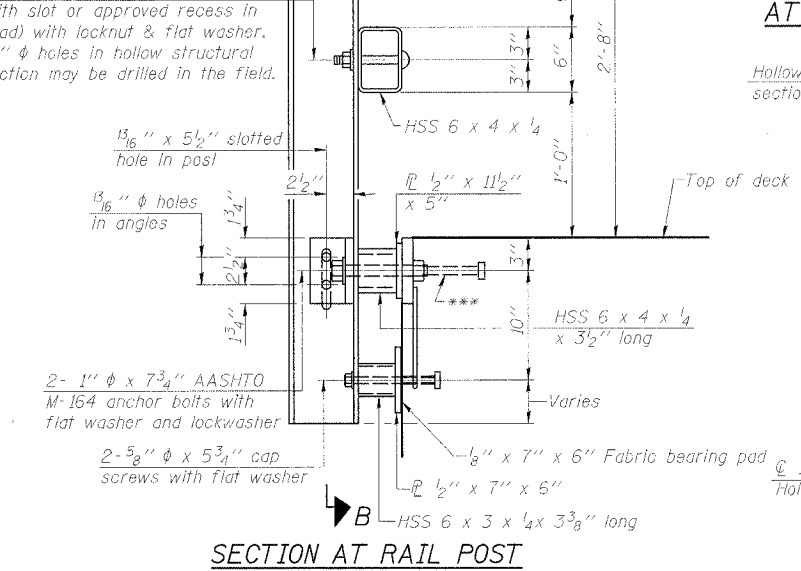


END OF RAIL DETAILS

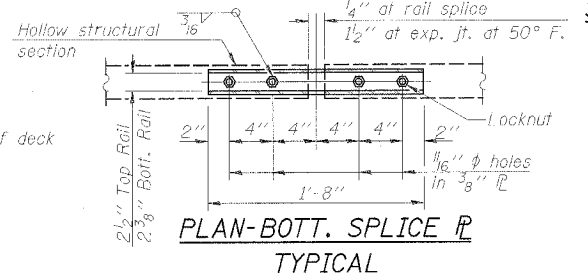


SECTION B-B

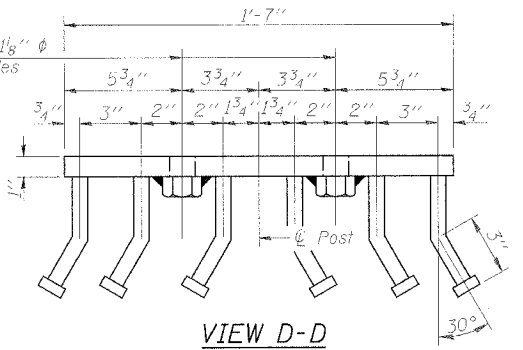
SECTION C-C



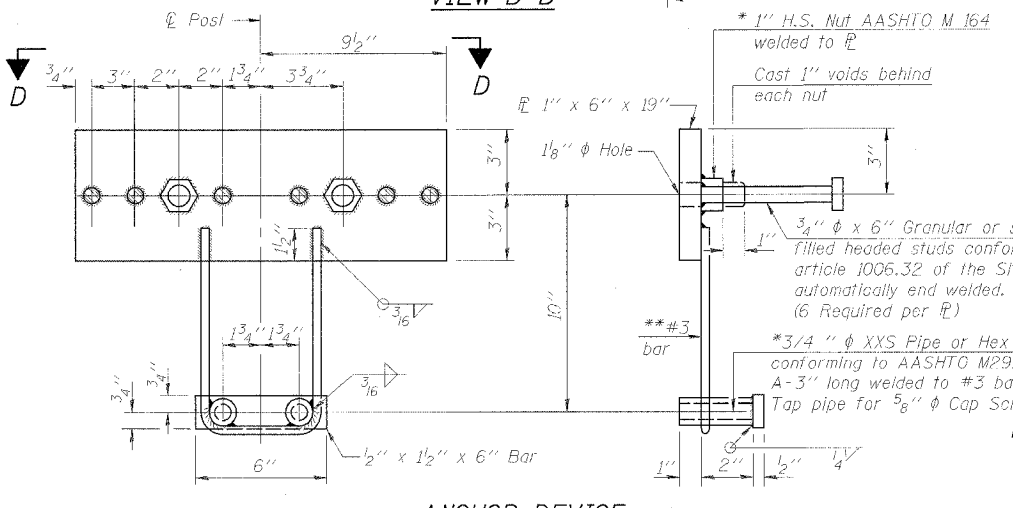
SECTION AT RAIL POST



PLAN-BOTT. SPLICE TYPICAL



VIEW D-D



ANCHOR DEVICE

Notes:  
 All field drilled holes shall be coated with an approved zinc rich paint before erection.  
 For multi-span bridges, sufficient 1/4" x 6" x 1'-2" galvanized steel shims shall be provided to align rail between adjacent spans. Cost included with Steel Railing, Type SM.  
 All steel rail members shall be galvanized according to Article 509.05 of the Standard Specifications.  
 \*\*\*The studs of the anchor devices shall be placed below the top reinforcement bars and the outermost longitudinal reinforcement bar shall be placed directly above the studs of the rail post anchor device.

BILL OF MATERIAL

Item	Unit	Quantity
Steel Railing, Type SM	Foot	256

STEEL RAILING, TYPE SM  
 FAS 249 (C.H. 17 - YANKEE LANE) OVER CROW CREEK  
 SECTION 03-00190-00-BR  
 STA. 55+01 (S.N. 006-3231)  
 BUREAU COUNTY  
 PROJECT NO. BRS-249(104)  
 WHA #1119D05

\*Whenever the lower insert assemblies interfere with strand locations, the #3 bars shall be cut and adjusted in order to allow raising or lowering of the lower inserts. Maximum adjustment not to exceed 1/2".

(6" 3" Maximum Post Spacing)