

WALTER C. KELLER ESTATE

SW 1/4, SEC. 4, T. 31 N., R. 1 W., 3RD P.M.

BENJAMIN G. HOYLE

CONTRACT NO.

F.A. RTE.	SECTION	COUNTY	TOTAL SHEETS	SHEET NO.
CH. 11	08-00022-00-BR	PUTNAM	23	4
STA. 19+00 TO STA. 35+00			ILLINOIS	
CONTRACT NO. 89434				

**ENTRANCES TO BE BUILT**

RT. STA. 21+95, P.E. -11.0%, 16' ROADBED  
 LT. STA. 26+02, F.E. -15.0%, 16' ROADBED  
 QUANTITIES INCLUDED IN THOSE LISTED

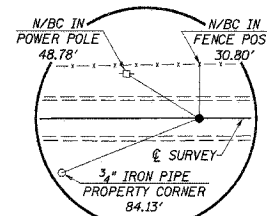
**PIPES TO BE REMOVED**

RT. STA. 21+95, 15" CMP, 20' LONG  
 A.R. STA. 22+43, 42" CMP, 52' LONG  
 LT. STA. 26+02, 12" CMP, 22' LONG  
 RT. STA. 31+93, 12" CMP, 46' LONG  
 QUANTITIES INCLUDED IN "EARTH EXCAVATION".

PI STA. = 32+96.00  
 $\Delta = 1^\circ 33' 01''$  (RT)  
 $D = 0^\circ 19' 39''$   
 $R = 17,500.00'$   
 $T = 236.76'$   
 $L = 473.50'$   
 $E = 1.60'$   
 P.C. STA. = 30+59.24  
 P.T. STA. = 35+32.74

**UTILITIES**

AMEREN IP  
 STEVE RALSTON 618-236-6207  
 MCNABB TELEPHONE COMPANY  
 DAVID HAWORTH  
 308 W. MAIN  
 MCNABB, IL 61335



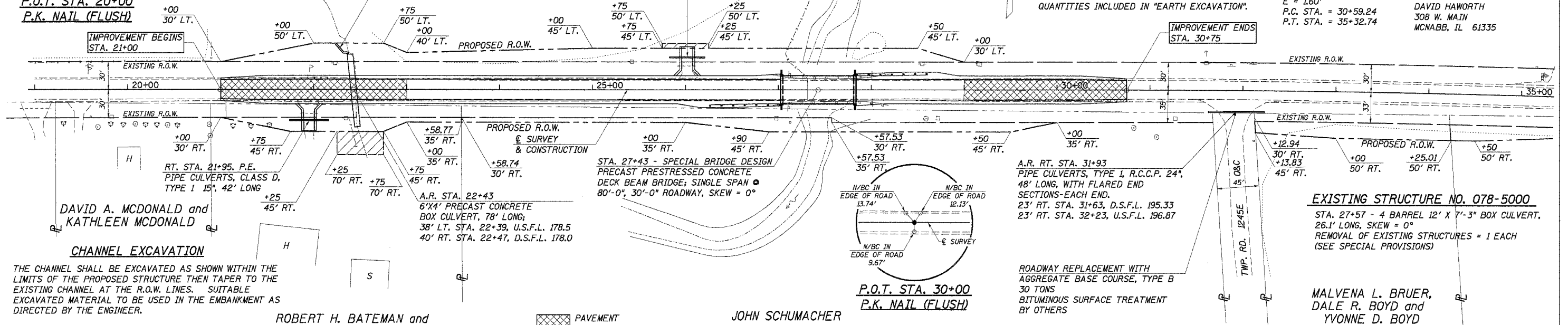
INDICATES TEMPORARY CONSTRUCTION EASEMENT TO BE ACQUIRED.

**GUARDRAIL REMOVAL**  
 LT. STA. 26+94.50 TO STA. 27+32 = 37.5 FOOT  
 RT. STA. 26+94.50 TO STA. 27+32 = 37.5 FOOT  
 LT. STA. 27+82 TO STA. 28+19.50 = 37.5 FOOT  
 RT. STA. 27+82 TO STA. 28+19.50 = 37.5 FOOT  
 TOTAL = 150 FOOT

EXISTING 15" TILE TO BE LOCATED IN FIELD  
 PRECOATED GALVANIZED CORRUGATED CULVERT PIPE, TYPE 1 18" 20' LONG WITH 45° ELBOW CONNECTED TO EXISTING TILE

LT. STA. 26+02 F.E. PIPE CULVERTS, CLASS D, TYPE 1 15", 38' LONG

P.O.T. STA. 20+00  
 P.K. NAIL (FLUSH)



**CHANNEL EXCAVATION**  
 THE CHANNEL SHALL BE EXCAVATED AS SHOWN WITHIN THE LIMITS OF THE PROPOSED STRUCTURE THEN TAPER TO THE EXISTING CHANNEL AT THE R.O.W. LINES. SUITABLE EXCAVATED MATERIAL TO BE USED IN THE EMBANKMENT AS DIRECTED BY THE ENGINEER.

ROBERT H. BATEMAN and CYNTHIA M. BATEMAN

JOHN SCHUMACHER

NW 1/4, SEC. 9, T. 31 N., R. 1 W., 3RD P.M.

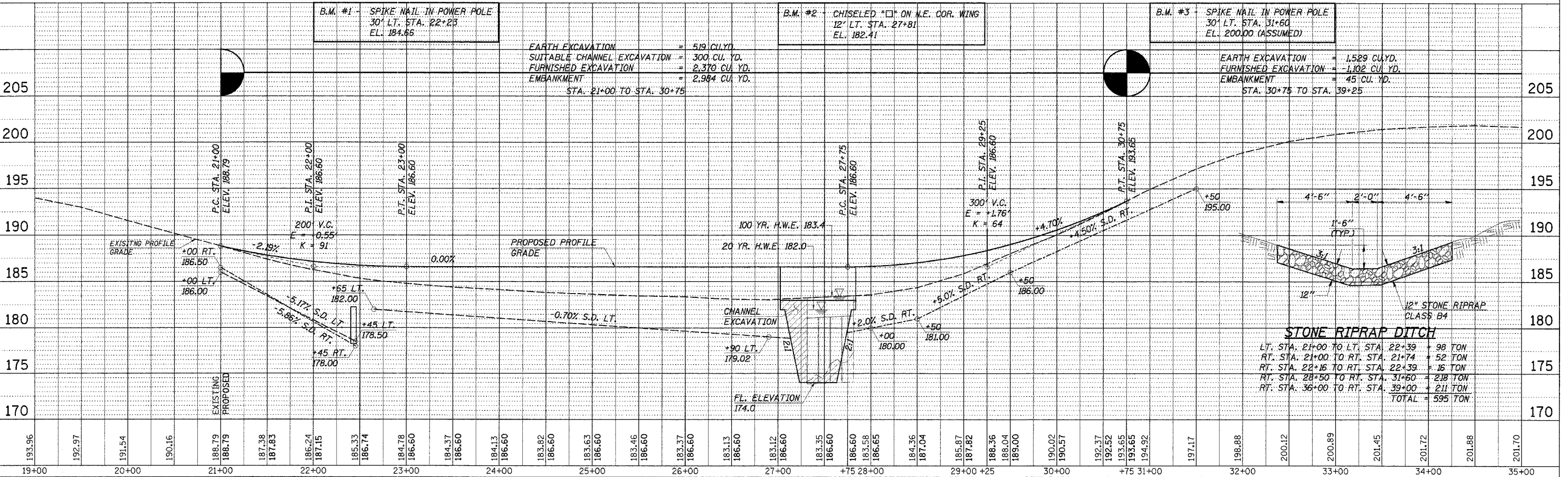
CHANNEL EXCAVATION = 440 CU. YD.

PAVEMENT REMOVAL

ROADWAY REPLACEMENT WITH AGGREGATE BASE COURSE, TYPE B 30 TONS BITUMINOUS SURFACE TREATMENT BY OTHERS

**EXISTING STRUCTURE NO. 078-5000**  
 STA. 27+57 - 4 BARREL 12' X 7'-3" BOX CULVERT, 26.1' LONG, SKEW = 0°  
 REMOVAL OF EXISTING STRUCTURES = 1 EACH (SEE SPECIAL PROVISIONS)

MALVENA L. BRUER, DALE R. BOYD and YVONNE D. BOYD



EARTH EXCAVATION = 519 CU. YD.  
 SUITABLE CHANNEL EXCAVATION = 300 CU. YD.  
 FURNISHED EXCAVATION = 2,370 CU. YD.  
 EMBANKMENT = 2,984 CU. YD.  
 STA. 21+00 TO STA. 30+75

EARTH EXCAVATION = 1,529 CU. YD.  
 FURNISHED EXCAVATION = 1,102 CU. YD.  
 EMBANKMENT = 45 CU. YD.  
 STA. 30+75 TO STA. 39+25

**STONE RIPRAP DITCH**  
 LT. STA. 21+00 TO LT. STA. 22+39 = 98 TON  
 RT. STA. 21+00 TO RT. STA. 21+74 = 52 TON  
 RT. STA. 22+16 TO RT. STA. 22+39 = 16 TON  
 RT. STA. 28+50 TO RT. STA. 31+60 = 218 TON  
 RT. STA. 36+00 TO RT. STA. 39+00 = 211 TON  
 TOTAL = 595 TON

DATE	
BY	
DESIGNED	
PLOTTED	
CHECKED	
DATE	
BY	
DATE	
BY	

DATE	
BY	
DESIGNED	
PLOTTED	
CHECKED	
DATE	
BY	
DATE	
BY	

PLOT DATE = 11/14/06  
 PLOT SCALE = 4800/600  
 USER NAME = SPRICE