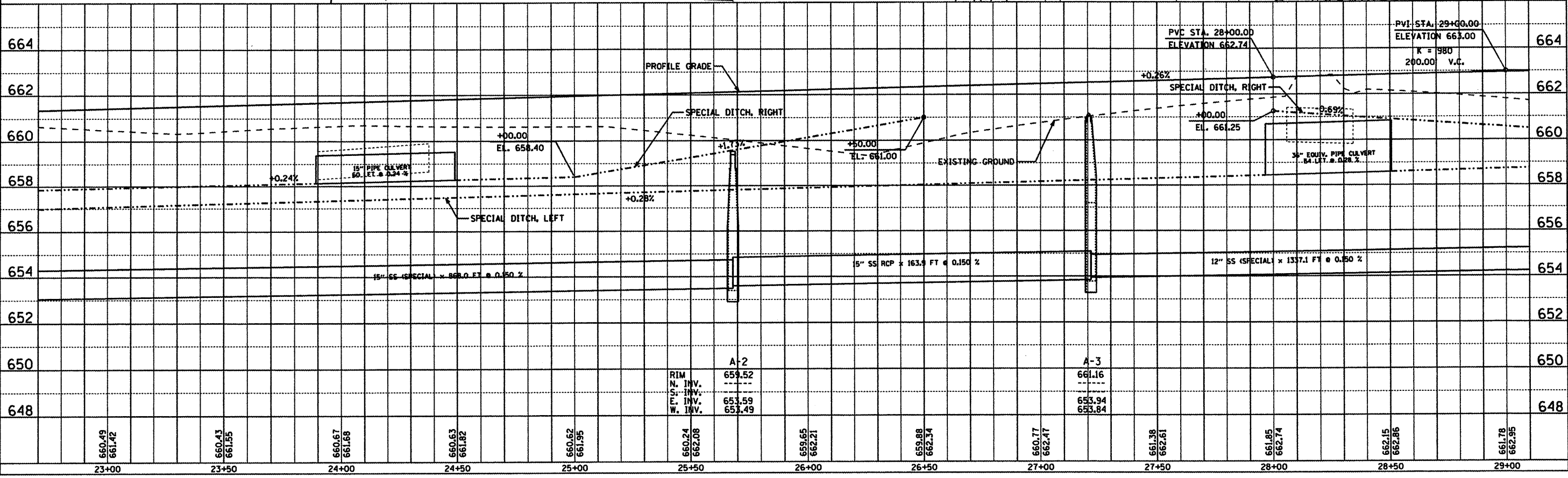
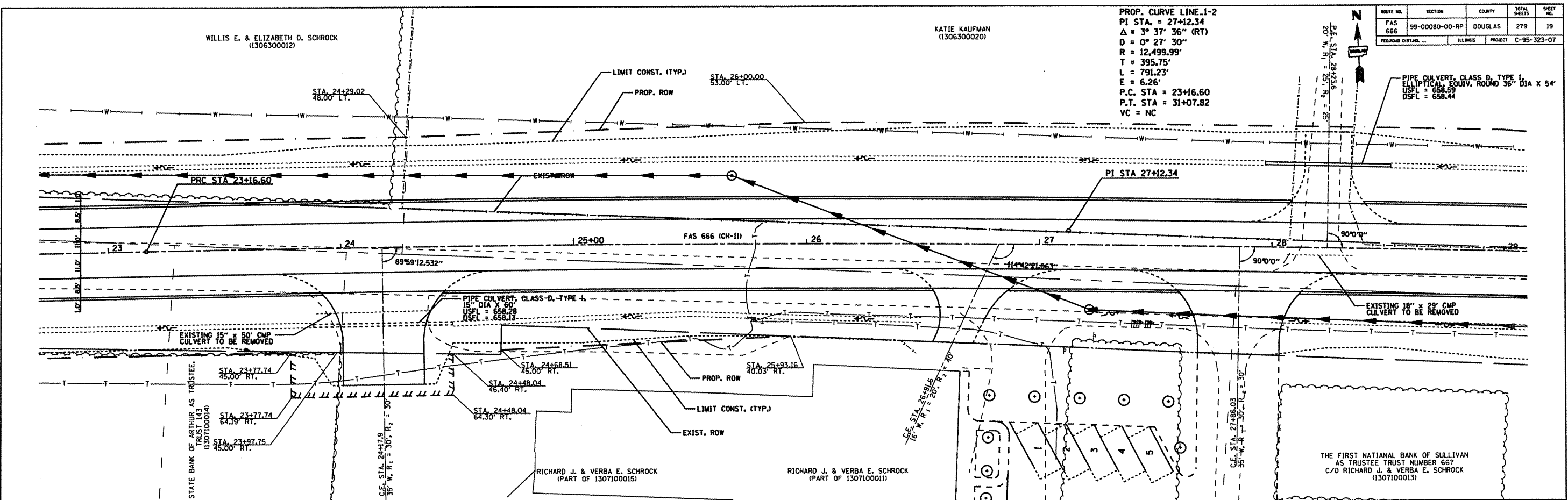


ROUTE NO.	SECTION	COUNTY	TOTAL SHEETS	SHEET NO.
FAS 666	99-00080-00-RP	DOUGLAS	279	19
FEDERAL DIST. NO. ...		ILLINOIS	PROJECT C-95-323-07	

PROP. CURVE LINE 1-2
 PI STA. = 27+12.34
 $\Delta = 3^\circ 37' 36''$ (RT)
 $D = 0^\circ 27' 30''$
 $R = 12,499.99'$
 $T = 395.75'$
 $L = 791.23'$
 $E = 6.26'$
 P.C. STA = 23+16.60
 P.T. STA = 31+07.82
 VC = NC



PLAN

DATE	
BY	
REVISION	
NOTED	
ALIGNED	
CHECKED	
DESIGNED	
FILED	
NO.	

PROFILE

DATE	
BY	
REVISION	
NOTED	
GRADES	
STRUCTURE	
NOTATIONS	
NO.	