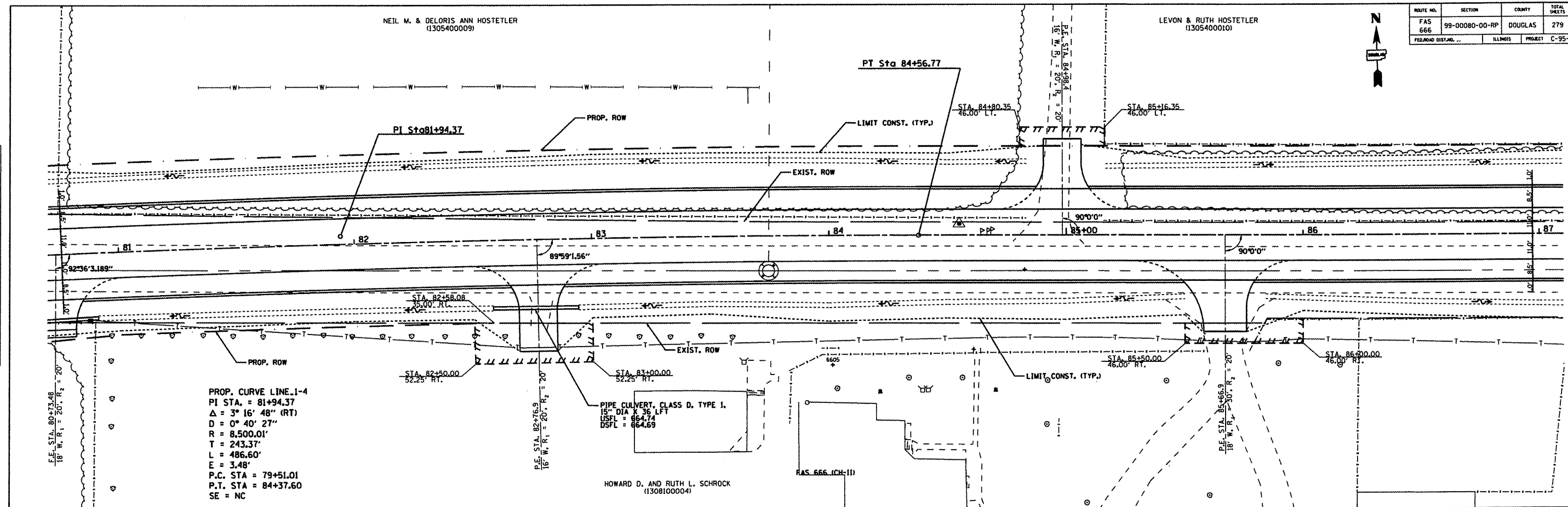
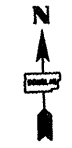


ROUTE NO.	SECTION	COUNTY	TOTAL SHEETS	SHEET NO.
FAS 666	99-00080-00-RP	DOUGLAS	279	29
FEDERAL DISTRICT		ILLINOIS	PROJECT C-95-323-07	



PROP. CURVE LINE 1-4
 PI STA. = 81+94.37
 $\Delta = 3^\circ 16' 48''$ (RT)
 $D = 0^\circ 40' 27''$
 $R = 8,500.01'$
 $T = 243.37'$
 $L = 486.60'$
 $E = 3.48'$
 P.C. STA = 79+51.01
 P.T. STA = 84+37.60
 SE = NC

HOWARD D. AND RUTH L. SCHROCK
 (1308100004)

PIPE CULVERT, CLASS D, TYPE 1,
 15" DIA X 36 LFT
 USFL = 664.74
 DSFL = 664.69

DATE	BY	REVISION

DATE	BY	REVISION

