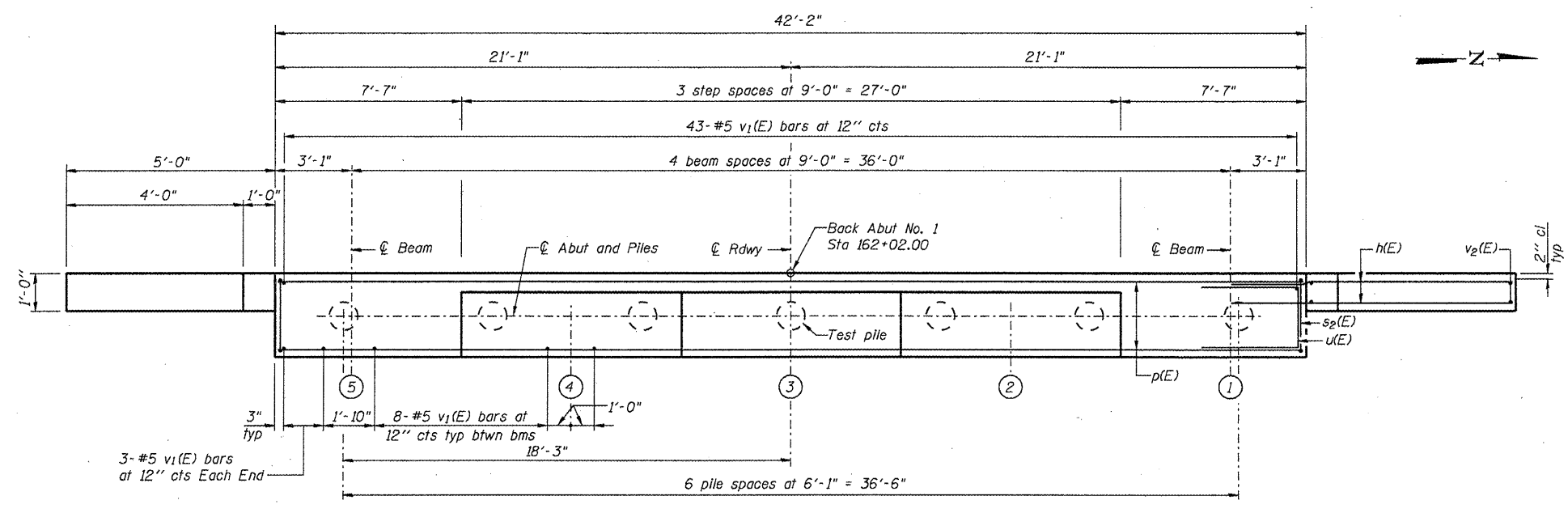
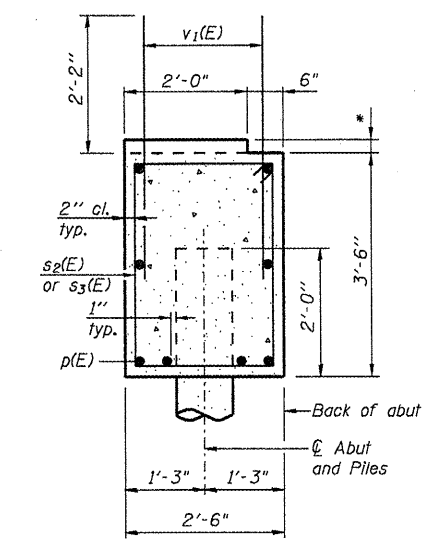
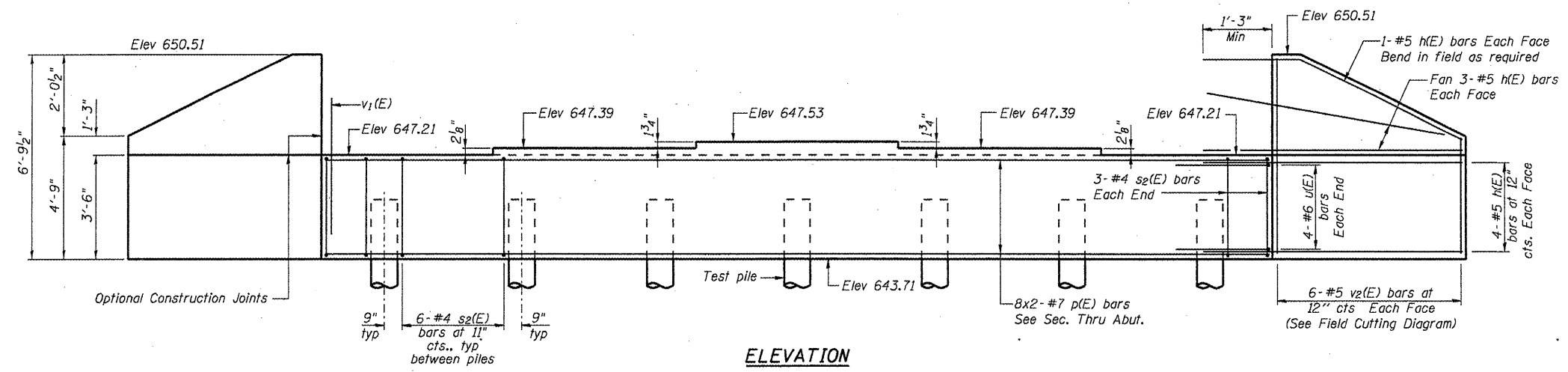


ROUTE NO.	SECTION	COUNTY	TOTAL SHEETS	SHEET NO.
		DOUGLAS	219	68
FED. ROAD DIST. NO.		ILLINOIS	PROJECT	
#99-00080-00-RP				

Notes: Four steps monolithically with cap.

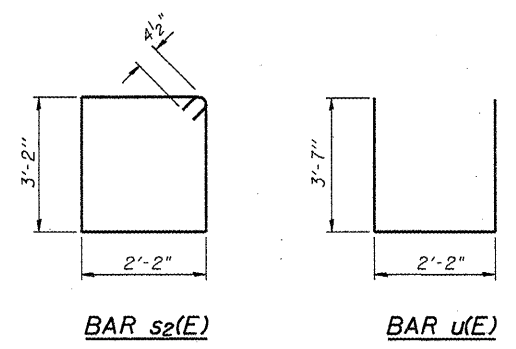
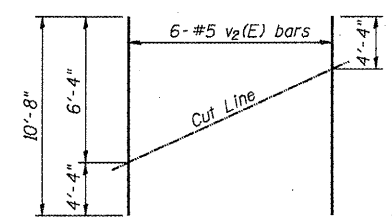


**BILL OF MATERIAL**

Bar	No.	Size	Length	Shape
h(E)	32	#5	6'-8"	—
p(E)	16	#7	22'-8"	—
s2(E)	42	#4	11'-5"	□
u(E)	8	#6	9'-4"	—
v1(E)	81	#5	4'-4"	—
v2(E)	12	#5	10'-8"	—
Structure Excavation		Cu. Yd.	61	
Concrete Structures		Cu. Yd.	15.3	
Reinforcement Bars, Epoxy Coated		Pound	1900	
Furnishing Metal Pile Shells 14"		Foot	246	
Driving Piles		Foot	246	
Test Pile Metal Shells		Each	1	

**PILE DATA**

Type: Metal shell - 14 in dia x 0.25 in walls  
 Nominal Required Bearing: 372 k  
 Allowable Resistance Available: 124 k  
 Est. Length: 41'  
 No. Production Piles: 6  
 No. Test Piles: 1



For details of Bar Splicers, see sheet 12 of 13.  
 For details of piles see sheet 11 of 13.

CH 11 (FA 666) OVER BIG SLOUGH  
**ABUTMENT NO. 1 DETAILS**

REVISIONS	SECTION 99-00080-00-RP	CH 11 (FAS 666)	DRAWN BY DATE
1	DOUGLAS	SN 021-4548	R KING 01/08
2		COUNTY	CHECKED BY "DAVE" JMB 01/08
3			BOOK NUMBER
4			PROJECT NO.
5			5149
6			SHEET NO.
7			
8			
9			
10			

HOMER L. CHASTAIN & ASSOCIATES, LLP  
 CONSULTING ENGINEERS  
 184-01197  
 DECATUR CHICAGO  
 (317) 422-8544 (773) 714-0050  
 ROCKFORD  
 (815) 489-0050