



DENNIS L. & ROSE E. PLANK
(1306400005- C)

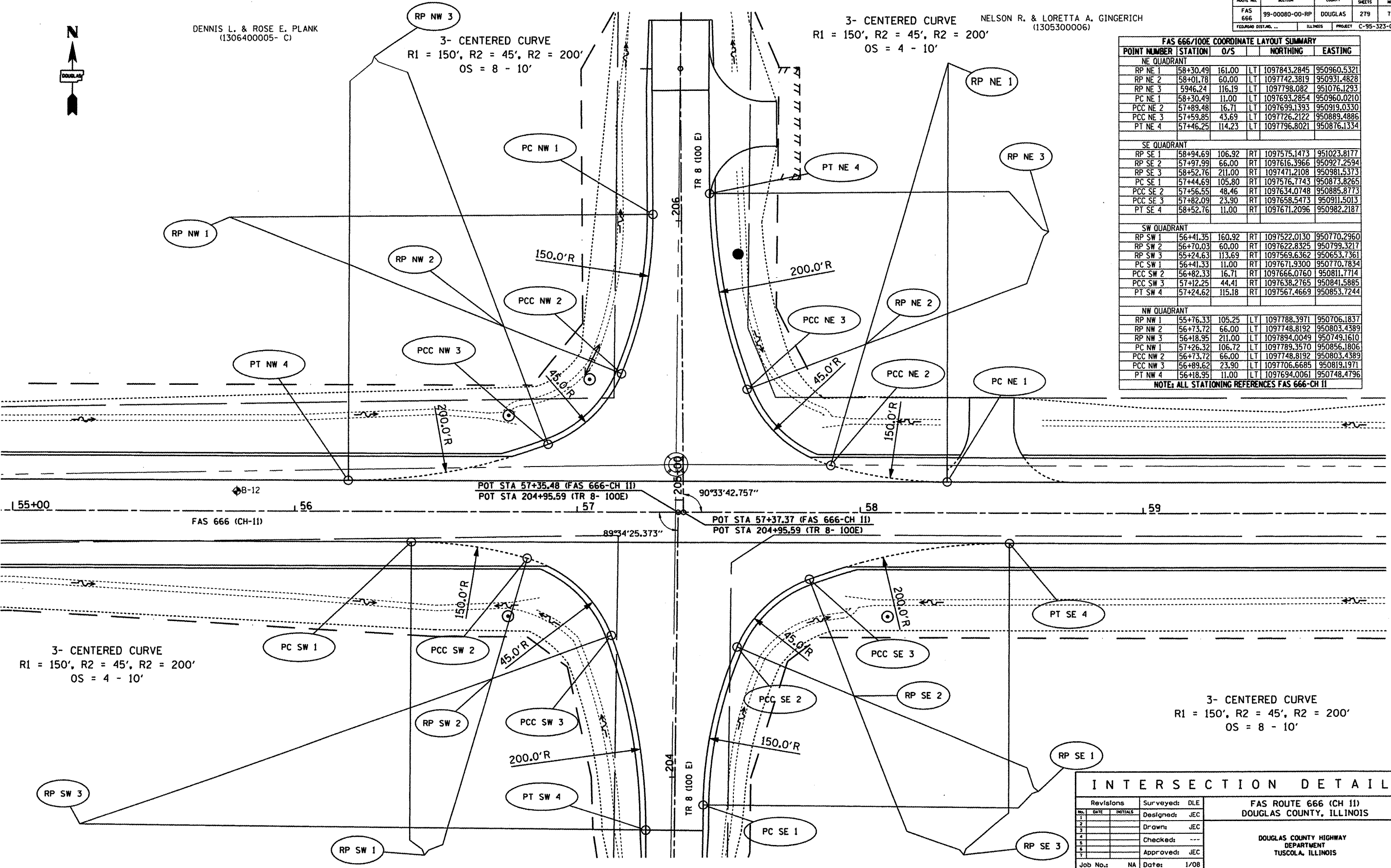
3- CENTERED CURVE
R1 = 150', R2 = 45', R2 = 200'
OS = 8 - 10'

3- CENTERED CURVE NELSON R. & LORETTA A. GINGERICH
R1 = 150', R2 = 45', R2 = 200'
OS = 4 - 10'

ROUTE NO.	SECTION	COUNTY	TOTAL SHEETS	SHEET NO.
FAS 666	99-00080-00-RP	DOUGLAS	279	73
FEDERAL DISTRICT		ILLINOIS	PROJECT C-95-323-07	

FAS 666/100E COORDINATE LAYOUT SUMMARY				
POINT NUMBER	STATION	O/S	NORTHING	EASTING
NE QUADRANT				
RP NE 1	58+30.49	161.00	LT 1097843.2845	950960.5321
RP NE 2	58+01.78	60.00	LT 1097742.3819	950931.4828
RP NE 3	5946.24	116.19	LT 1097798.082	951076.1293
PC NE 1	58+30.49	11.00	LT 1097693.2854	950960.0210
PCC NE 2	57+89.48	16.71	LT 1097699.1393	950919.0330
PCC NE 3	57+59.85	43.69	LT 1097726.2122	950889.4886
PT NE 4	57+46.25	114.23	LT 1097796.8021	950876.1334
SE QUADRANT				
RP SE 1	58+94.69	106.92	RT 1097575.1473	951023.8177
RP SE 2	57+97.99	66.00	RT 1097616.3966	950927.2594
RP SE 3	58+52.76	211.00	RT 1097471.2108	950981.5373
PC SE 1	57+44.69	105.80	RT 1097576.7743	950873.8265
PCC SE 2	57+56.55	48.46	RT 1097634.0748	950885.8773
PCC SE 3	57+82.09	23.90	RT 1097658.5473	950911.5013
PT SE 4	58+52.76	11.00	RT 1097671.2096	950982.2187
SW QUADRANT				
RP SW 1	56+41.35	160.92	RT 1097522.0130	950770.2960
RP SW 2	56+70.03	60.00	RT 1097622.8325	950799.3217
RP SW 3	55+24.63	113.69	RT 1097569.6362	950653.7361
PC SW 1	56+41.33	11.00	RT 1097671.9300	950770.7834
PCC SW 2	56+82.33	16.71	RT 1097666.0760	950811.7714
PCC SW 3	57+12.25	44.41	RT 1097638.2765	950841.5885
PT SW 4	57+24.62	115.18	RT 1097567.4669	950853.7244
NW QUADRANT				
RP NW 1	55+76.33	105.25	LT 1097788.3971	950706.1837
RP NW 2	56+73.72	66.00	LT 1097748.8192	950803.4389
RP NW 3	56+18.95	211.00	LT 1097894.0049	950749.1610
PC NW 1	57+26.32	106.72	LT 1097789.3570	950856.1806
PCC NW 2	56+73.72	66.00	LT 1097748.8192	950803.4389
PCC NW 3	56+89.62	23.90	LT 1097706.6685	950819.1971
PT NW 4	56+18.95	11.00	LT 1097694.0061	950748.4796

NOTE: ALL STATIONING REFERENCES FAS 666-CH II



Revisions			Surveyed: DLE	FAS ROUTE 666 (CH 11)	
No.	DATE	INITIALS	Designed: JEC	DOUGLAS COUNTY, ILLINOIS	
1			Drawn: JEC		
2			Checked: ---		
3			Approved: JEC		
4					
5					
6					
7					
Job No.:	NA	Date:	1/08		