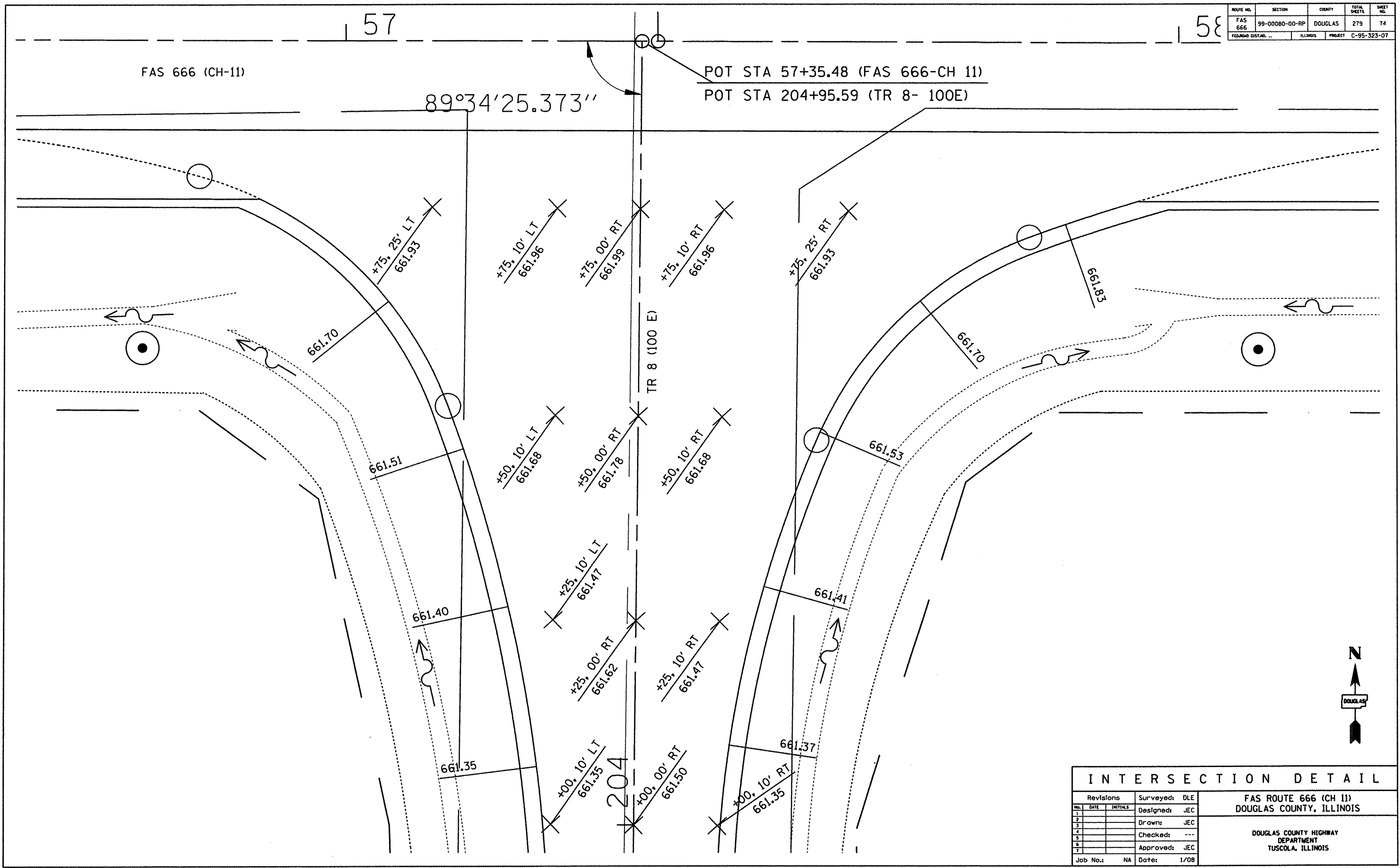


ROUTE NO.	SECTION	COUNTY	TOTAL SHEETS	SHEET NO.
FAS 666	99-000B0-00-RP	DOUGLAS	279	74
FEDERAL DIST. NO.	ILLINOIS	PROJECT	C-95-323-07	



INTERSECTION DETAIL				
Revisions	Surveyed:	DLE	FAS ROUTE 666 (CH 11) DOUGLAS COUNTY, ILLINOIS DOUGLAS COUNTY HIGHWAY DEPARTMENT TUSCOLA, ILLINOIS	
No. DATE INITIALS	Designed:	JEC		
	Drawn:	JEC		
	Checked:	---		
	Approved:	JEC		
Job No.:	NA	Date:		1/08