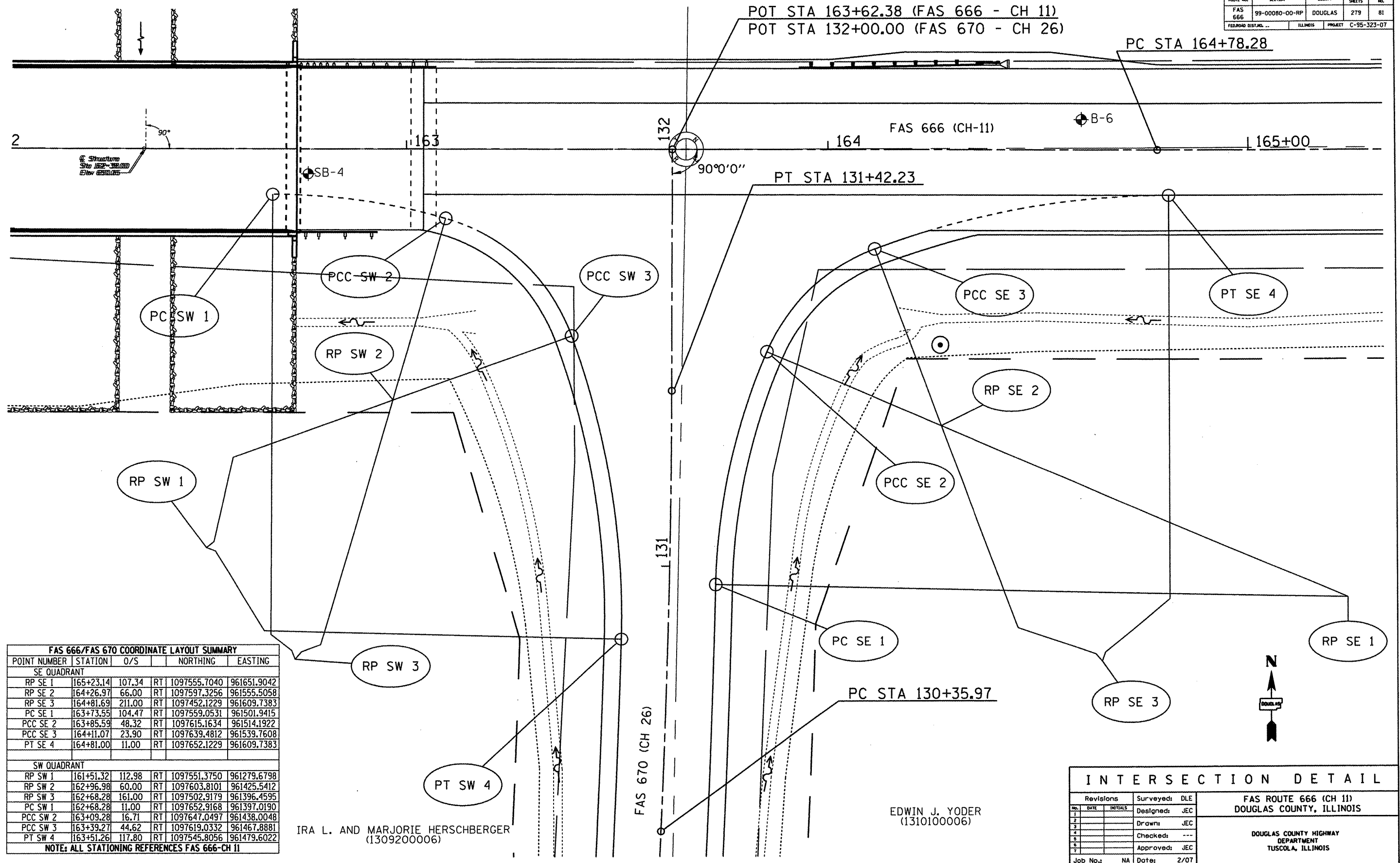


ROUTE NO.	SECTION	COUNTY	TOTAL SHEETS	SHEET NO.
FAS 666	99-00080-00-RP	DOUGLAS	279	81
FEDERAL DIST. NO.	ILLINOIS	PROJECT	C-95-323-07	



FAS 666/FAS 670 COORDINATE LAYOUT SUMMARY

POINT NUMBER	STATION	O/S		NORTHING	EASTING
SE QUADRANT					
RP SE 1	165+23.14	107.34	RT	1097555.7040	961651.9042
RP SE 2	164+26.97	66.00	RT	1097597.3256	961555.5058
RP SE 3	164+81.69	211.00	RT	1097452.1229	961609.7383
PC SE 1	163+73.55	104.47	RT	1097559.0531	961501.9415
PCC SE 2	163+85.59	48.32	RT	1097615.1634	961514.1922
PCC SE 3	164+11.07	23.90	RT	1097639.4812	961539.7608
PT SE 4	164+81.00	11.00	RT	1097652.1229	961609.7383
SW QUADRANT					
RP SW 1	161+51.32	112.98	RT	1097551.3750	961279.6798
RP SW 2	162+96.98	60.00	RT	1097603.8101	961425.5412
RP SW 3	162+68.28	161.00	RT	1097502.9179	961396.4595
PC SW 1	162+68.28	11.00	RT	1097652.9168	961397.0190
PCC SW 2	163+09.28	16.71	RT	1097647.0497	961438.0048
PCC SW 3	163+39.27	44.62	RT	1097619.0332	961467.8881
PT SW 4	163+51.26	117.80	RT	1097545.8056	961479.6022

NOTE: ALL STATIONING REFERENCES FAS 666-CH II

IRA L. AND MARJORIE HERSCHBERGER
(1309200006)

EDWIN J. YODER
(1310100006)

INTERSECTION DETAIL

Revisions	Surveyed: DLE	FAS ROUTE 666 (CH 11) DOUGLAS COUNTY, ILLINOIS DOUGLAS COUNTY HIGHWAY DEPARTMENT TUSCOLA, ILLINOIS
1	Designed: JEC	
2	Drawn: JEC	
3	Checked: ---	
4	Approved: JEC	
5		
6		
Job No.: NA	Date: 2/07	