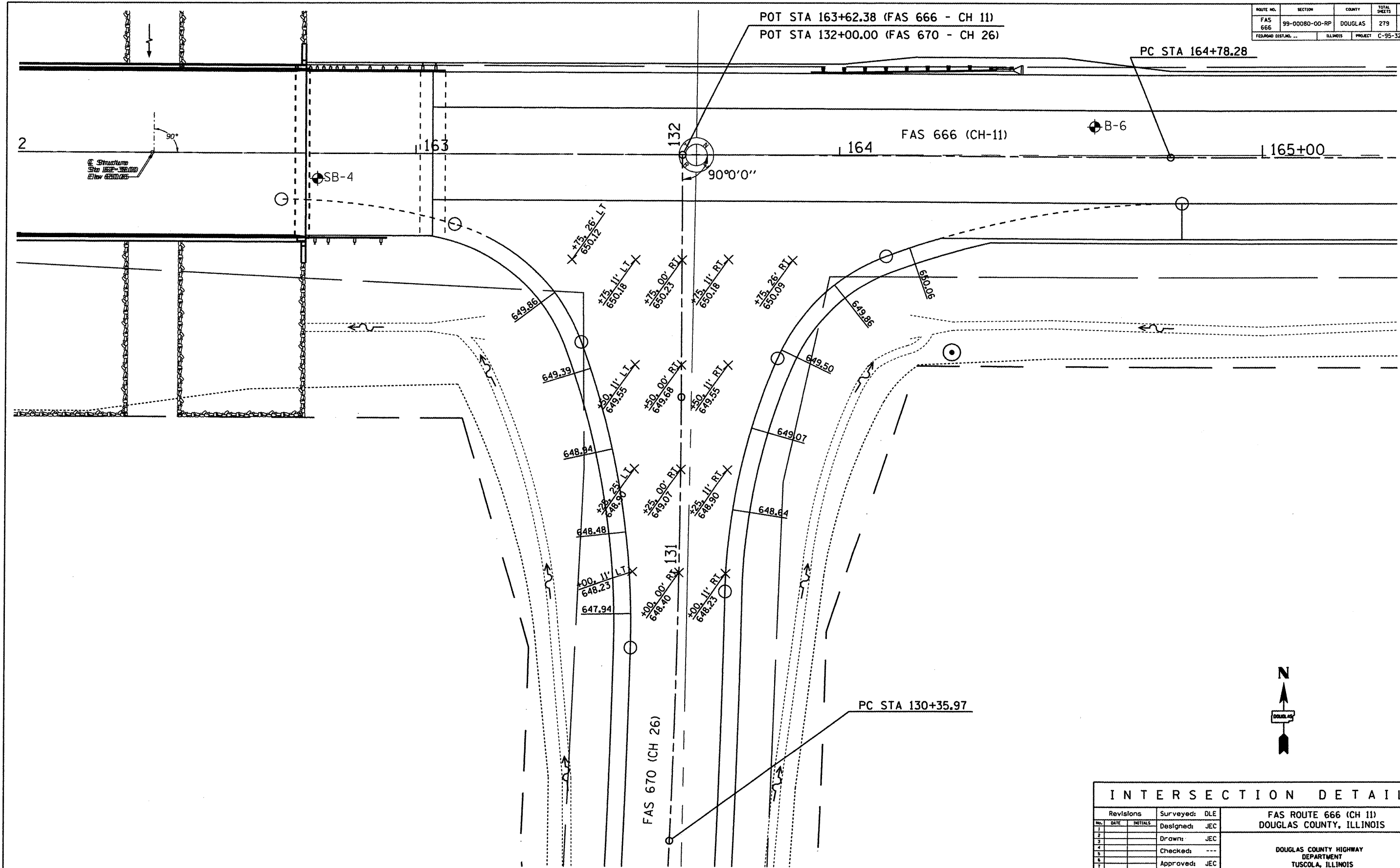


ROUTE NO.	SECTION	COUNTY	TOTAL SHEETS	SHEET NO.
FAS 666	99-00080-00-RP	DOUGLAS	279	82
FED. ROAD DIST. NO.	ILLINOIS	PROJECT	C-95-323-07	



INTERSECTION DETAIL			
Revisions	Surveyed: DLE	FAS ROUTE 666 (CH 11) DOUGLAS COUNTY, ILLINOIS DOUGLAS COUNTY HIGHWAY DEPARTMENT TUSCOLA, ILLINOIS	
1	Designed: JEC		
2	Drawn: JEC		
3	Checked: ---		
4	Approved: JEC		
Job No.: NA	Date: 1/08		