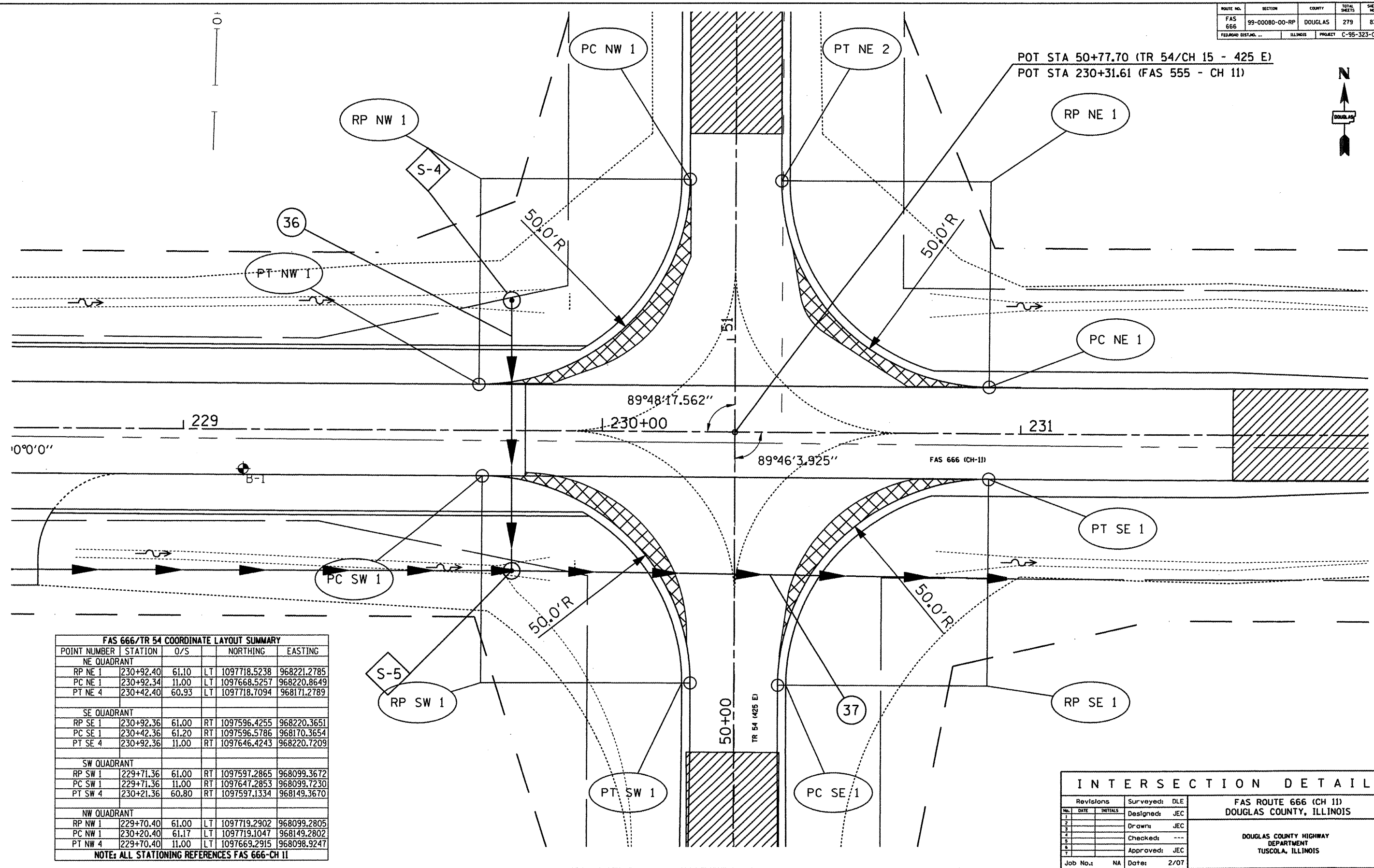


ROUTE NO.	SECTION	COUNTY	TOTAL SHEETS	SHEET NO.
FAS 666	99-00080-00-RP	DOUGLAS	279	83
FEDERAL DIST. NO.	ILLINOIS	PROJECT	C-95-323-07	

POT STA 50+77.70 (TR 54/CH 15 - 425 E)
 POT STA 230+31.61 (FAS 555 - CH 11)



FAS 666/TR 54 COORDINATE LAYOUT SUMMARY

POINT NUMBER	STATION	O/S		NORTHING	EASTING
NE QUADRANT					
RP NE 1	230+92.40	61.10	LT	1097718.5238	968221.2785
PC NE 1	230+92.34	11.00	LT	1097668.5257	968220.8649
PT NE 4	230+42.40	60.93	LT	1097718.7094	968171.2789
SE QUADRANT					
RP SE 1	230+92.36	61.00	RT	1097596.4255	968220.3651
PC SE 1	230+42.36	61.20	RT	1097596.5786	968170.3654
PT SE 4	230+92.36	11.00	RT	1097646.4243	968220.7209
SW QUADRANT					
RP SW 1	229+71.36	61.00	RT	1097597.2865	968099.3672
PC SW 1	229+71.36	11.00	RT	1097647.2853	968099.7230
PT SW 4	230+21.36	60.80	RT	1097597.1334	968149.3670
NW QUADRANT					
RP NW 1	229+70.40	61.00	LT	1097719.2902	968099.2805
PC NW 1	230+20.40	61.17	LT	1097719.1047	968149.2802
PT NW 4	229+70.40	11.00	LT	1097669.2915	968098.9247

NOTE: ALL STATIONING REFERENCES FAS 666-CH 11

Revisions			Surveyed:	DLE
No.	DATE	INITIALS	Designed:	JEC
1			Drawn:	JEC
2			Checked:	---
3			Approved:	JEC
4				
5				
6				
7				
Job No.:	NA	Date:	2/07	

INTERSECTION DETAIL

FAS ROUTE 666 (CH 11)
DOUGLAS COUNTY, ILLINOIS

DOUGLAS COUNTY HIGHWAY
DEPARTMENT
TUSCOLA, ILLINOIS