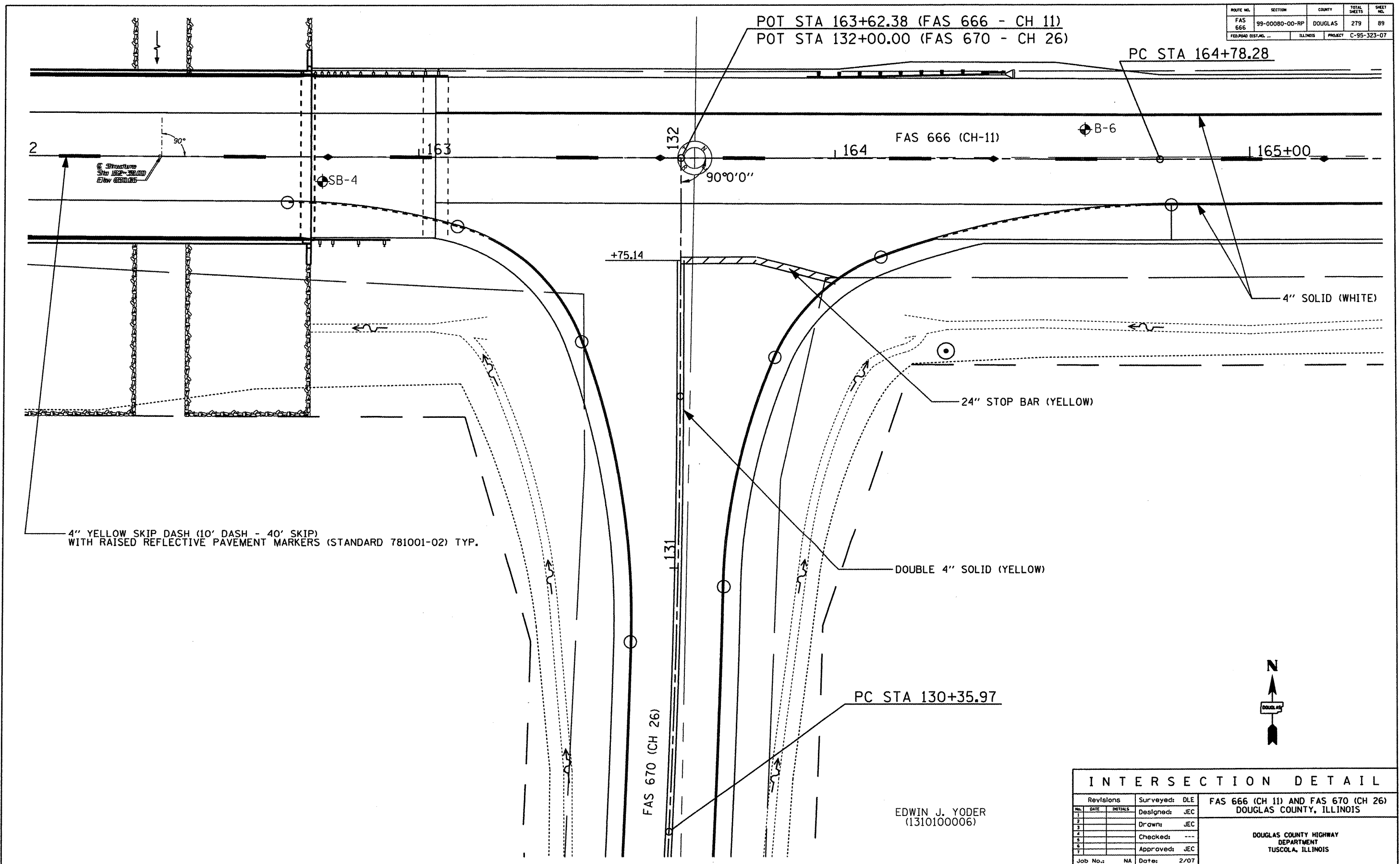


ROUTE NO.	SECTION	COUNTY	TOTAL SHEETS	SHEET NO.
FAS 666	99-00080-00-RP	DOUGLAS	279	89
FEDERAL DIST. NO. ...		ILLINOIS	PROJECT C-95-323-07	



4" YELLOW SKIP DASH (10' DASH - 40' SKIP) WITH RAISED REFLECTIVE PAVEMENT MARKERS (STANDARD 781001-02) TYP.



EDWIN J. YODER
(1310100006)

INTERSECTION DETAIL			
Revisions		Surveyed: DLE	FAS 666 (CH 11) AND FAS 670 (CH 26) DOUGLAS COUNTY, ILLINOIS
		Designed: JEC	
		Drawn: JEC	DOUGLAS COUNTY HIGHWAY DEPARTMENT TUSCOLA, ILLINOIS
		Checked: ---	
		Approved: JEC	
Job No.:	NA	Date:	2/07