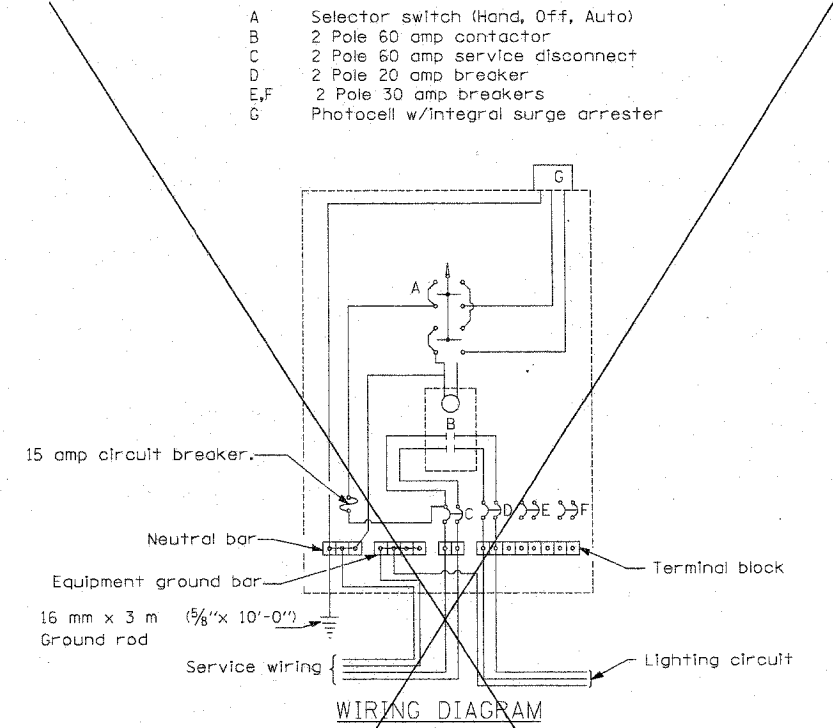
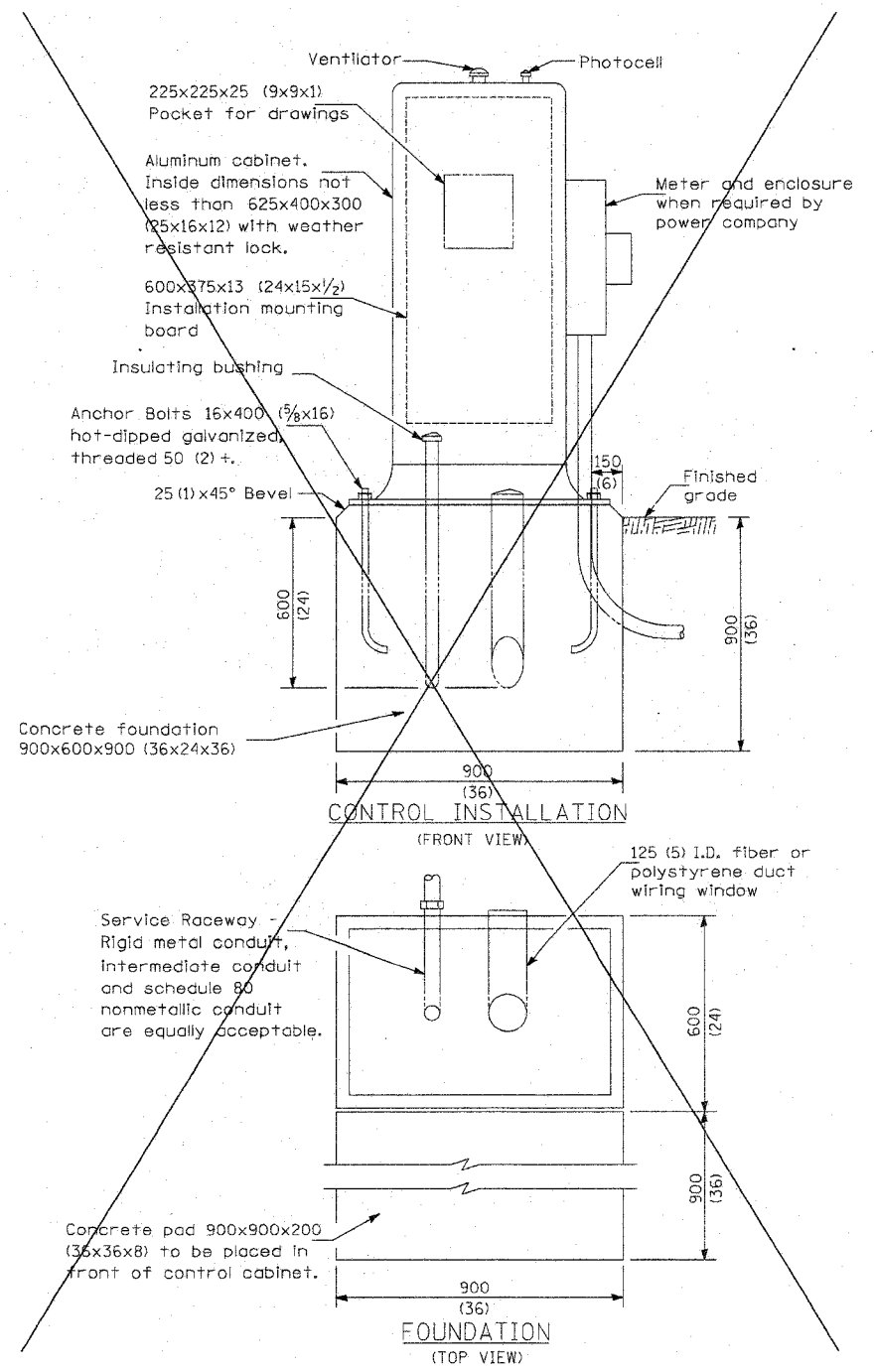
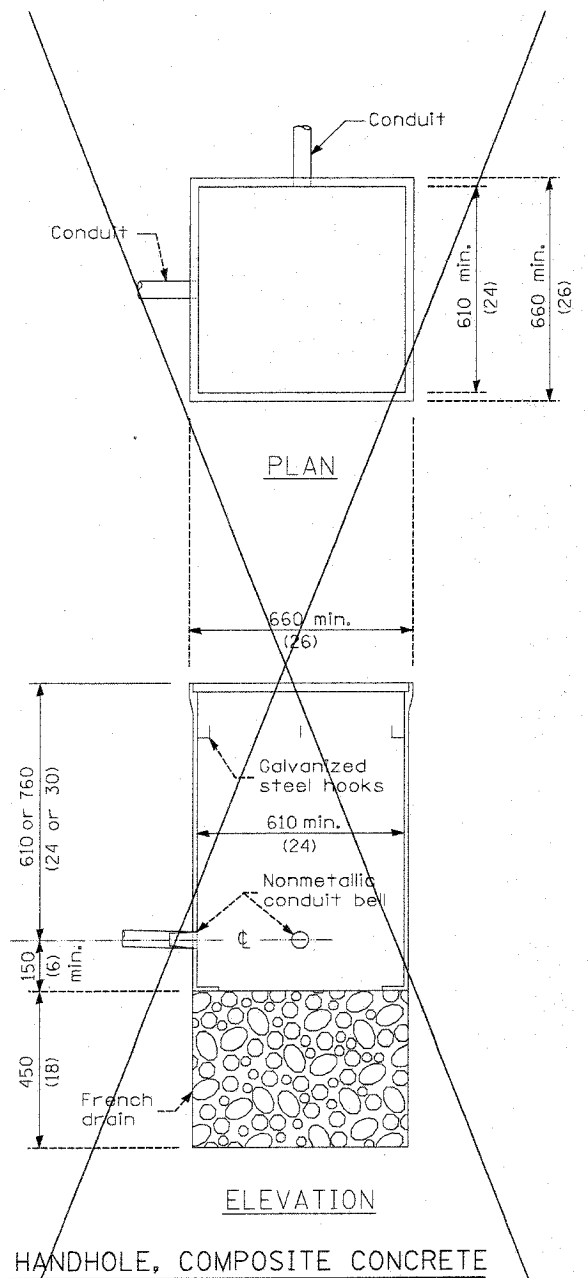


F.A. RTE.	SECTION	COUNTY	TOTAL SHEETS	SHEET NO.
1-57	00-00374-03-LS	CHAMPAIGN	21	17
STA.		TO STA.		
FED. ROAD DIST. NO.		ILLINOIS FED. AID PROJECT		
CONTRACT NO. 91382				



- A Selector switch (Hand, Off, Auto)
- B 2 Pole 60 amp contactor
- C 2 Pole 60 amp service disconnect
- D 2 Pole 20 amp breaker
- E, F 2 Pole 30 amp breakers
- G Photocell w/integral surge arrester

GENERAL NOTES

Locate service pole and control installation adjacent to R.O.W. line with a minimum distance of 9 m (30') from the edge of pavement. Exact location shall be established by the Engineer.

The underground service entrance wiring shall not exceed 46 m (150'). Total aerial and underground service between the control installation and primary transformer shall not exceed 76 m (250').

Raceways shall terminate 75 (3) above top of concrete foundation.

For 480 V. systems, a 480/120 V. control transformer will be required.

All dimensions are in millimeters unless otherwise shown.

- 240 V. SERVICE
- 480 V. SERVICE

P:\100\100\plans\sheds\Lighting_Sheets.dgn 3/24/2008

Revised 3/28/08

Clampitz
ENGINEERS

DESIGN FIRM REGISTRATION
No. 184-000400
119 SOUTH CLINTON STREET
SUITE 600
CHICAGO, IL 60661
PHONE : 312.848.9900
FAX : 312.848.0204

REVISIONS	
NAME	DATE
RLH	3/18/08

ILLINOIS DEPARTMENT OF TRANSPORTATION

LIGHTING DETAILS

SCALE: As Noted
DATE: 01/04/08

DRAWN BY: RS
CHECKED BY: MTP