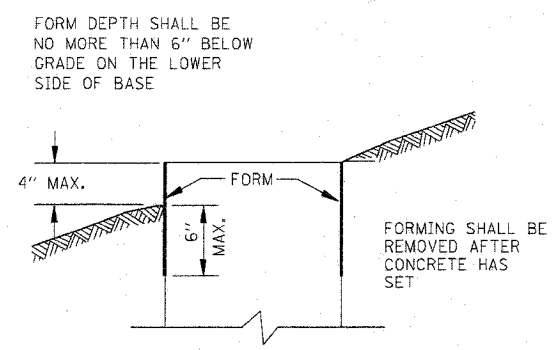
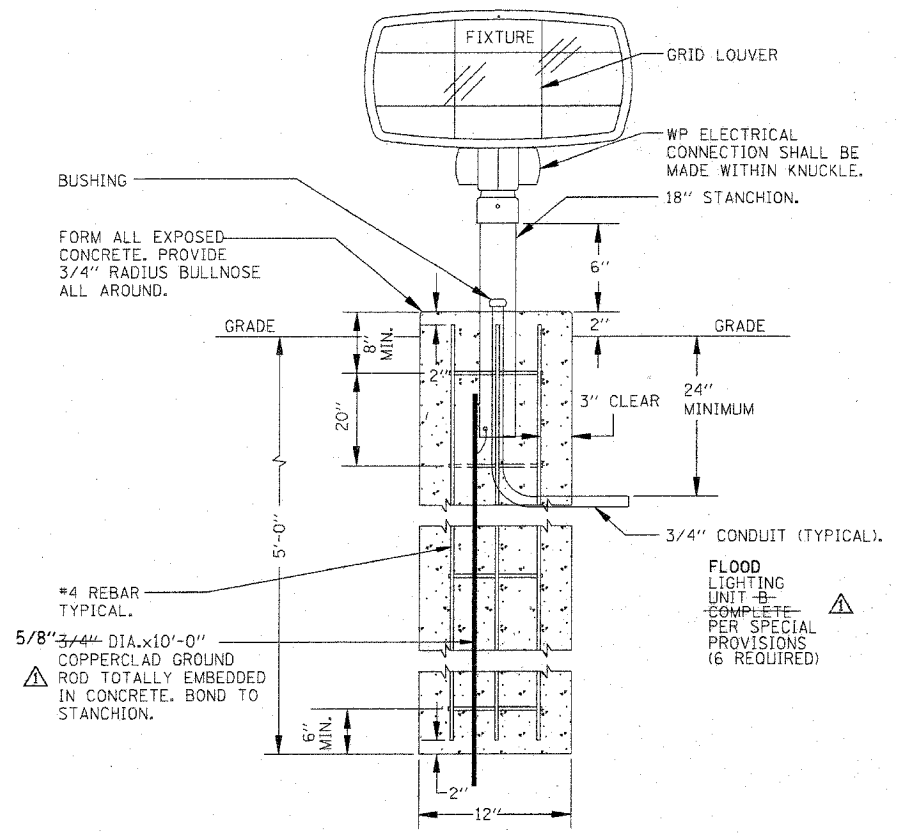


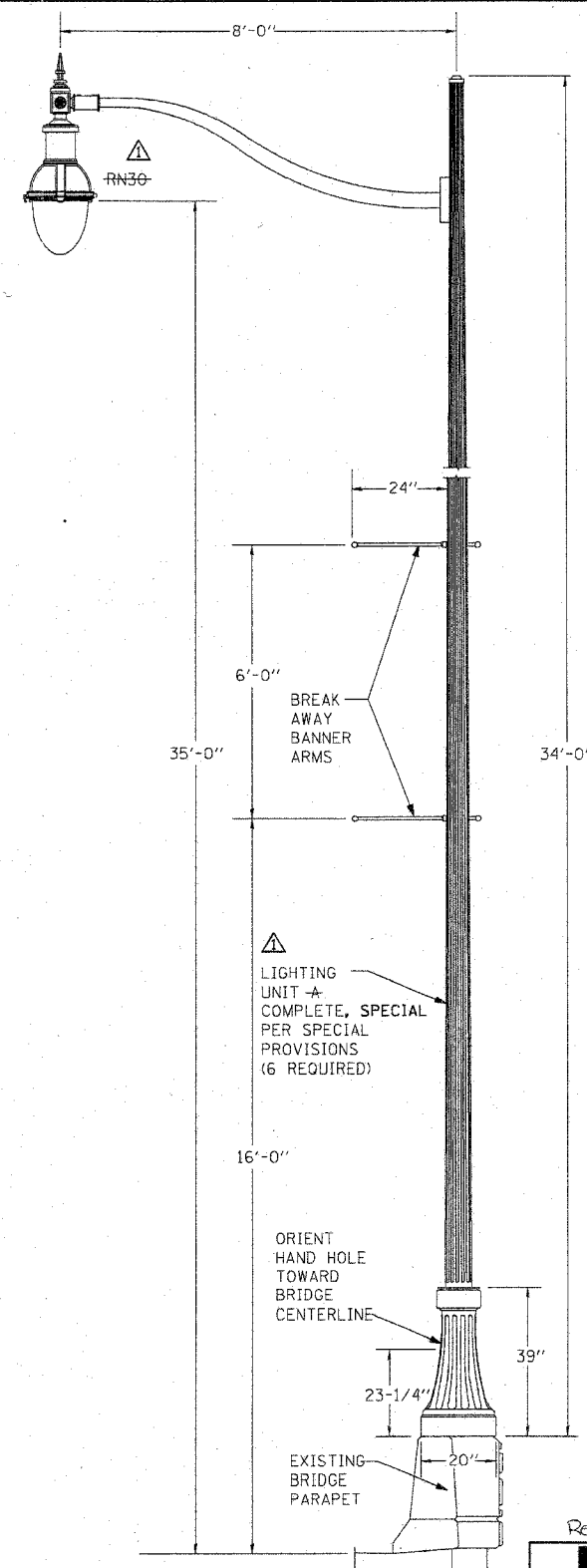
F.A. RT#	SECTION	COUNTY	TOTAL SHEETS	SHEET NO.
I-57	DD-00374-03-LS	CHAMPAIGN	21	18
STA.	TO STA.			
FED. ROAD DIST. NO.	ILLINOIS FED. AID PROJECT			
CONTRACT NO. 91382				



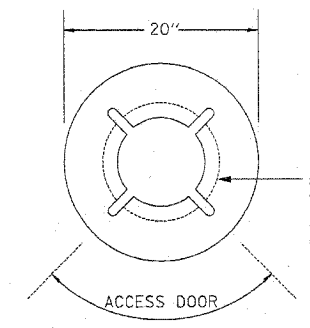
FORMING DETAIL



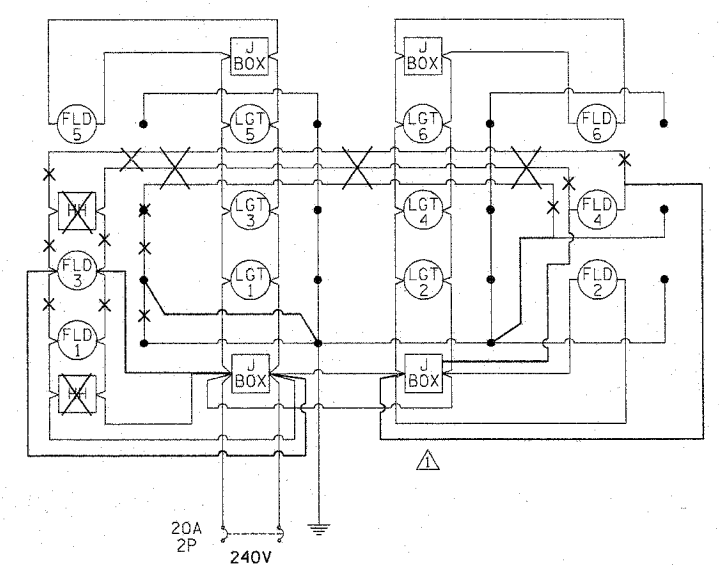
△ LIGHTING UNIT FLOOD LIGHT UNIT B, COMPLETE



△ LIGHT UNIT A COMPLETE, SPECIAL



BASE ORIENTATION DIAGRAM



NOTES: △
 PROVIDE CIRCUITING PER PLAN.
 TWO POLE AND SURGE PROTECTOR
 PROVIDE TWIN FUSE HOLDER IN EACH POLE BASE.
 PROVIDE FUSES PER MANUFACTURER'S RECOMMENDATIONS.
 THE STANDARD SPECIFICATIONS

REVISIONS		
NO.	NAME	DATE
1	RLH	3/18/08

ILLINOIS DEPARTMENT OF TRANSPORTATION

LIGHTING DETAILS

SCALE: As Noted
 DATE: 01/04/08

DRAWN BY: RS
 CHECKED BY: MTP

P:\2008\91382\plans\lights\Lighting_Sheets.rvt
 3/24/2008

Revised 3/28/08

Clampitz
 ENGINEERS

DESIGN FIRM REGISTRATION
 No. 184-000450
 118 SOUTH CLINTON STREET
 SUITE 600
 CHICAGO, IL 60681
 PHONE: 312.648.1800
 FAX: 312.648.0204