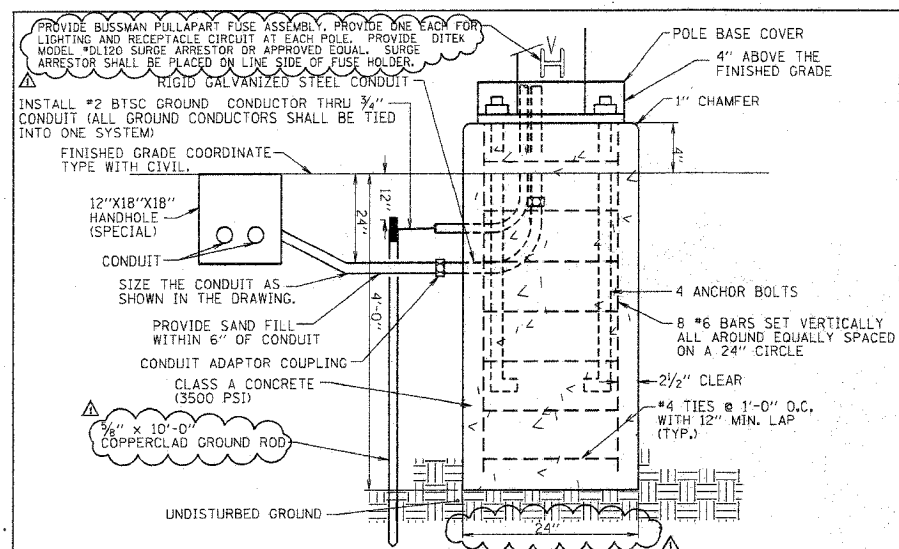


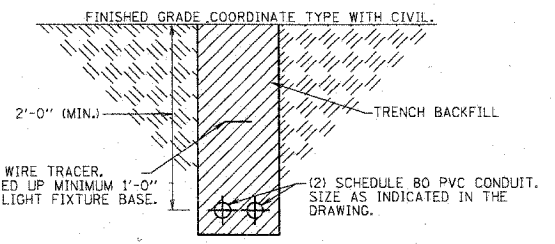
F.A. RTE.	SECTION	COUNTY	TOTAL SHEETS	SHEET NO.
06-00334-00-SW		MCLEAN	13	E1.3
STA.		TO STA.		
FED. ROAD DIST. NO.		ILLINOIS FED. AID PROJECT		



- NOTES:**
- IT SHALL BE THE CONTRACTORS RESPONSIBILITY TO CHECK AND VERIFY ALL ANCHOR BOLT DIMENSIONS (SIZE, BOLT CIRCLE, ETC.,) WITH THE LIGHTING STANDARD PRIOR TO INSTALLATION OF THE FOUNDATIONS.
 - CHAMFER EXPOSED EDGES OF ALL FOUNDATIONS.
 - PROVIDE INSULATING GROUNDING BUSHING ON EXPOSED ENDS (IN BASE OF POLE) OF ALL GALVANIZED STEEL BENDS.
 - ALL SPLICES SHALL TAKE PLACE AT THE ACCESS DOOR OF LIGHT POLE. NO SPLICES WILL BE ALLOWED IN HANDHOLES.
 - POLE BASES SHALL BE PAID FOR, PER EACH LIGHT POLE BASE.

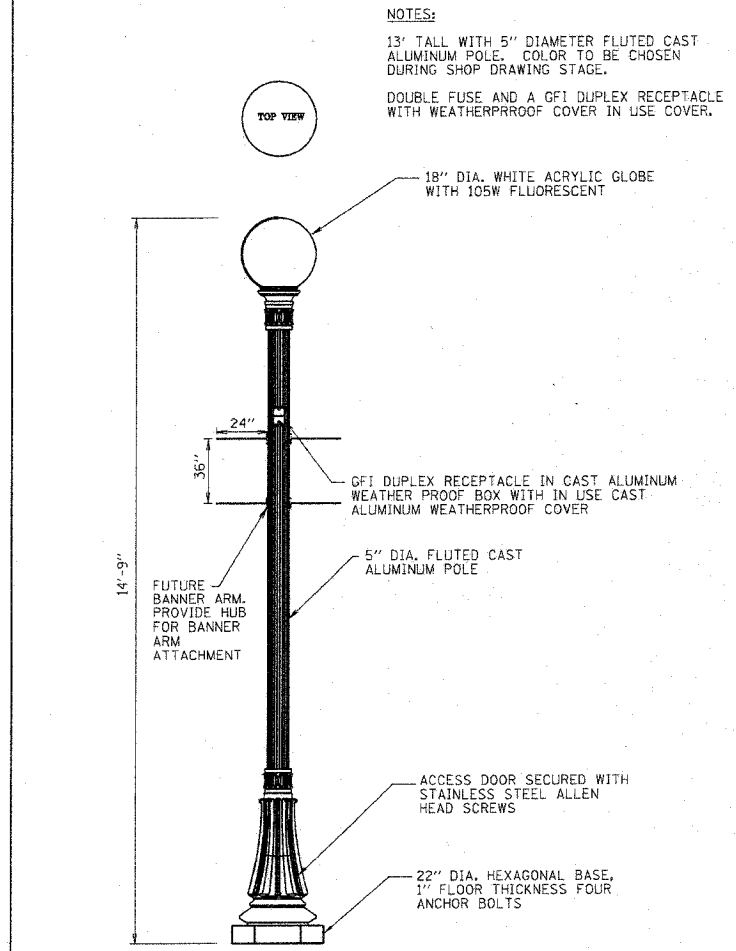
4 Luminaire Base Details For Light Fixture Type A & B
Scale: Not To Scale

1 Legend
Scale: Not To Scale



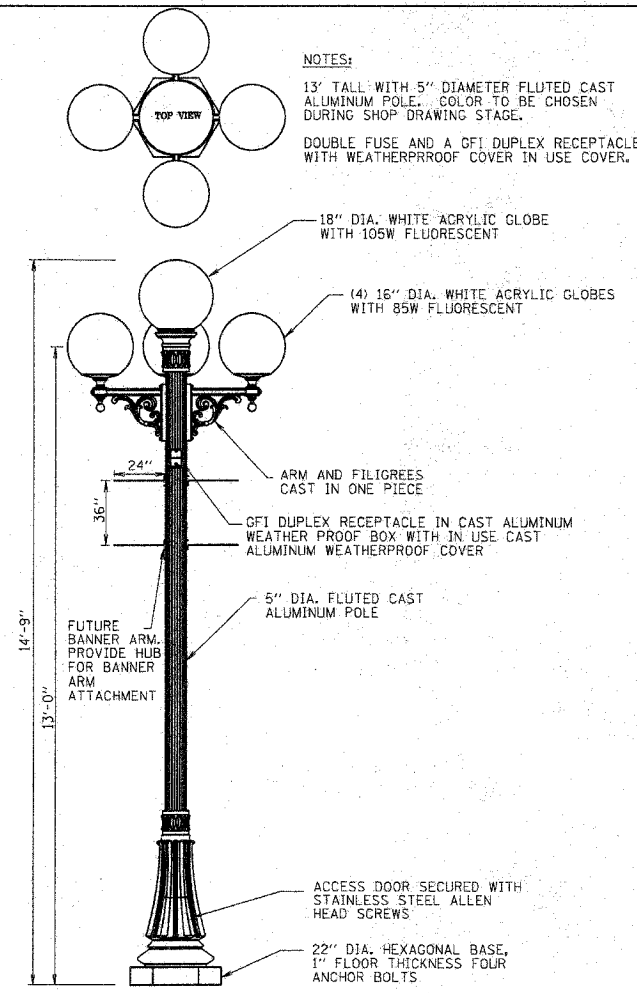
WARNING TAPE WITH COPPER WIRE TRACER. TRACER WIRE SHALL BE COILED UP MINIMUM 1'-0\"/>

2 Trench Backfill Details
Scale: Not To Scale



- NOTES:**
- 13' TALL WITH 5" DIAMETER FLUTED CAST ALUMINUM POLE. COLOR TO BE CHOSEN DURING SHOP DRAWING STAGE.
 - DOUBLE FUSE AND A GFI DUPLEX RECEPTACLE WITH WEATHERPROOF COVER IN USE COVER.

6 Luminaire Detail For Light Fixture Type B
Scale: Not To Scale



- NOTES:**
- 13' TALL WITH 5" DIAMETER FLUTED CAST ALUMINUM POLE. COLOR TO BE CHOSEN DURING SHOP DRAWING STAGE.
 - DOUBLE FUSE AND A GFI DUPLEX RECEPTACLE WITH WEATHERPROOF COVER IN USE COVER.

5 Luminaire Detail For Light Fixture Type A
Scale: Not To Scale

LUMINAIRE SCHEDULE							
TYPE	MANUFACTURER/CATALOG NO.	DESCRIPTION	LUMINAIRE		LAMP DATA		REMARKS
			VOLT AMPS	VOLTS	LAMP CODE	QNTY	
A	STERNBERG 4-G16WA 508A 478PM 208V G18WA 508BD5- 13' POLE-SP-SPA OR APPROVED EQUAL	POLE MOUNTED 5 GLOBE TYPE LIGHT FIXTURE. SEE LIGHT FIXTURE DETAILS.	445	120	(4) EIKO SP85/41/MED 85 WATT SELF BALLASTED FLUORESCENT (1) EIKO SP105/41/MED 105 WATT SELF BALLASTED FLUORESCENT	4 1	85 105 MOUNT LIGHT FIXTURES ON 13' TALL ALUMINUM POLE. SP-WITH GFI HUBBELL #GF8300GY RECEPTACLE AND IN USE WEATHERPROOF COVER SPA- PROVIDE ACRYLIC GLOBES HID BALLAST NOT REQUIRED. CONTRACTOR SHALL MATCH EXISTING LIGHT POLES, LUMINAIRES, AND BASES. (FIELD VERIFY PRIOR TO BIDDING). CONTRACTOR SHALL PROVIDE IN LINE FUSES AT ACCESS DOOR. ONE FOR LIGHTING CIRCUIT AND ONE FOR RECEPTACLE.
B	STERNBERG G18WA 508BD5 208V- 13' POLE-SP-SPA OR APPROVED EQUAL	POLE MOUNTED 1 GLOBE TYPE LIGHT FIXTURE. SEE LIGHT FIXTURE DETAILS.	105	120	(1) EIKO SP105/41/MED 105 WATT SELF BALLASTED FLUORESCENT	1	105 MOUNT LIGHT FIXTURES ON 13' TALL ALUMINUM POLE. SP-WITH GFI HUBBELL #GF8300GY RECEPTACLE AND IN USE WEATHERPROOF COVER SPA-PROVIDE ACRYLIC GLOBES HID BALLAST NOT REQUIRED. CONTRACTOR SHALL MATCH EXISTING LIGHT POLE, LUMINAIRE, AND BASE. (FIELD VERIFY PRIOR TO BIDDING). CONTRACTOR SHALL PROVIDE IN LINE FUSES AT ACCESS DOOR. ONE FOR LIGHTING CIRCUIT AND ONE FOR RECEPTACLE.

3 Luminaire Schedule
Scale: Not To Scale

REVISIONS	
NAME	DATE
ADDENDUM #1	5-21-08

ILLINOIS DEPARTMENT OF TRANSPORTATION
ELECTRICAL DETAILS
CITY OF BLOOMINGTON
DOWNTOWN MAIN STREET BEAUTIFICATION
FRONT STREET TO WASHINGTON STREET
SCALE: VERT.
DATE: 01-31-08
DRAWN BY:
CHECKED BY:

PLOT DATE = 08/05/08
FILE NAME = 07ELE1.P
USER NAME = KUBERN