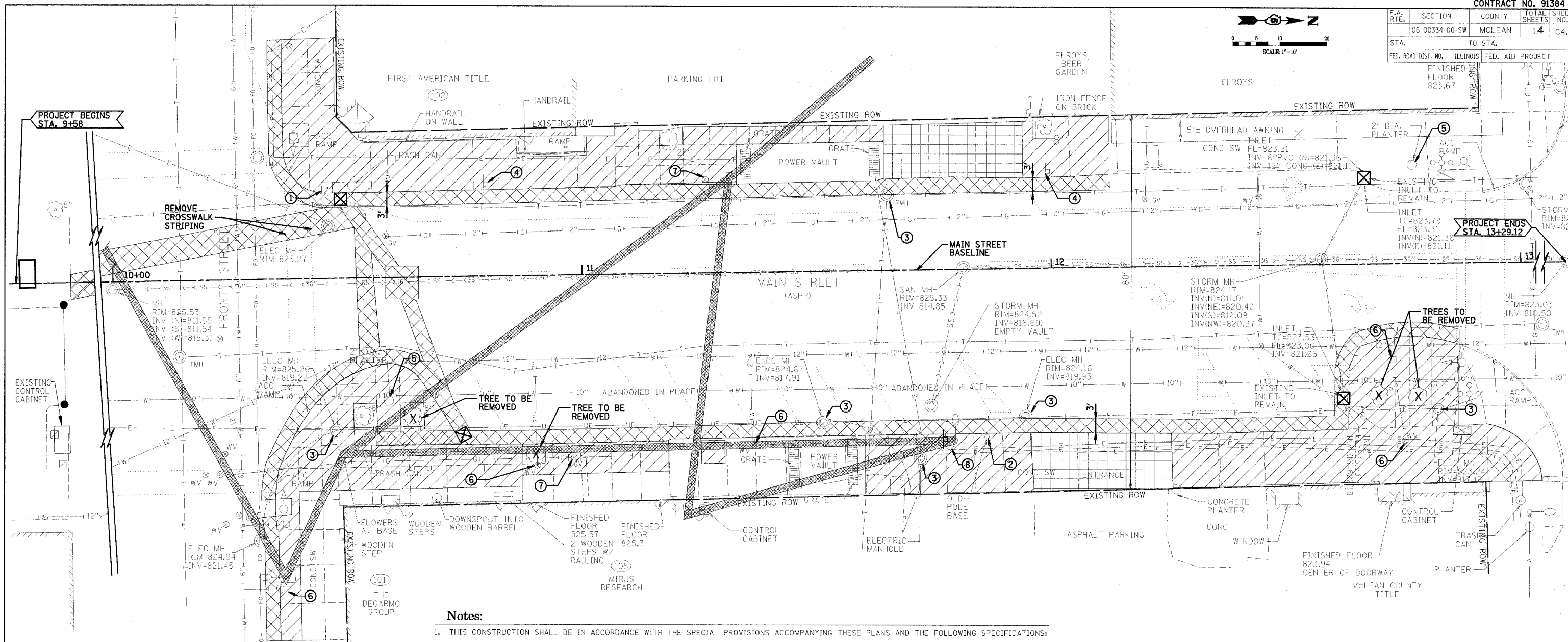
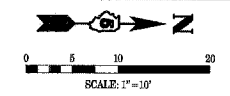


F.A. RTE.	SECTION	COUNTY	TOTAL SHEETS	SHEET NO.
06-00334-00-SW		MCLEAN	14	C4.0
STA.	TO STA.		FED. ROAD DIST. NO.	ILLINOIS FED. AID PROJECT



LEGEND
EXISTING

36" SAN INLET	EVERGREEN TREE
18" SS STORM SEWER	TREE W/DIA.
UNDERGROUND TELEPHONE	SAPLING
GAS MAIN	RAILROAD SPIKE
GAS VALVE	WATER VALVE
WATER SERVICE SHUTOFF SIGN	FIRE HYDRANT MANHOLE
UNDERGROUND ELECTRIC	WATER LINE
AERIAL ELECTRIC POLE DOWN GUY	BUILDING
TELEPHONE POLE	PAVEMENT MARKING
LIGHT POLE	
MAST ARM	
POWER POLE	
TRAFFIC SIGNAL	
5 BULB LIGHT FIXTURE	
FENCE	
DITCH LINE	
IR IRON ROD	
IP IRON PIPE	
EXISTING ROW	

LEGEND
REMOVAL

TREE TO BE REMOVED	CONCRETE SIDEWALK REMOVAL
CONCRETE DRIVEWAY REMOVAL	HOT MIX ASPHALT OVER PCC BASE COURSE
OVERHEAD POWER AND LIGHT POLES AND LINES TO BE REMOVED BY AMEREN I.P.	

Notes:

- THIS CONSTRUCTION SHALL BE IN ACCORDANCE WITH THE SPECIAL PROVISIONS ACCOMPANYING THESE PLANS AND THE FOLLOWING SPECIFICATIONS:
- "STANDARD SPECIFICATIONS FOR WATER AND SEWER MAIN CONSTRUCTION IN ILLINOIS", 5TH EDITION, DATED MAY, 1996".
- "STANDARD SPECIFICATIONS FOR ROAD AND BRIDGE CONSTRUCTION", ADOPTED JANUARY 1, 2007, BY THE ILLINOIS DEPARTMENT OF TRANSPORTATION.
- "SUPPLEMENTAL SPECIFICATIONS AND RECURRING SPECIAL PROVISIONS", ADOPTED JANUARY 1, 2008, BY THE ILLINOIS DEPARTMENT OF TRANSPORTATION.
- "MANUAL ON UNIFORM TRAFFIC CONTROL DEVICES FOR STREETS AND HIGHWAYS" AND THE ILLINOIS SUPPLEMENT TO THE MANUAL ON UNIFORM TRAFFIC CONTROL DEVICES.
- THE EXISTING TOPOGRAPHIC INFORMATION INDICATED FOR THIS PROJECT IS BASED ON FIELD DATA COLLECTED BY THE FARNSWORTH GROUP FROM TOPOGRAPHIC SURVEYS. INFORMATION FROM RECORD DRAWINGS OF VARIOUS PROJECTS WAS PROVIDED BY THE CITY OF BLOOMINGTON. THE CONTRACTOR IS RESPONSIBLE FOR VERIFYING THE TOPOGRAPHIC INFORMATION INDICATED ON THE DRAWINGS AND SHALL DETERMINE THE EXACT LOCATION AND ELEVATION OF ALL EXISTING TOPOGRAPHIC INFORMATION ABOVE OR BELOW GROUND, SHOWN OR NOT SHOWN, PRIOR TO CONSTRUCTION. DISCREPANCIES IN EXISTING TOPOGRAPHIC DATA SHALL BE REPORTED TO THE ENGINEER IMMEDIATELY FOR REVIEW.
- UTILITY TRENCHES SHALL BE BACKFILLED WITH I.D.O.T. QUALITY GRANULAR MATERIAL.
- THE CONTRACTOR SHALL NOTIFY AND COORDINATE UTILITY ABANDONMENTS AND RELOCATIONS WITH APPROPRIATE UTILITY COMPANY AFFECTED. NO ADDITIONAL COMPENSATION WILL BE ALLOWED.
- THE CONTRACTOR SHALL CLEAN ALL SAND AND DEBRIS FROM EXISTING STORM SEWERS AND SHALL INSPECT STORM SEWERS FOR DEFICIENCIES AND IRREGULARITIES PRIOR TO CONSTRUCTION. ANY ABNORMALITIES DISCOVERED DURING THE CLEANING AND INSPECTION OPERATIONS SHALL BE REPORTED TO THE ENGINEER IMMEDIATELY.
- ALL DEMOLITION AND CONSTRUCTION ACTIVITIES SHALL BE COORDINATED WITH THE OWNER TO MINIMIZE DISRUPTION OF THE NORMAL DAILY FUNCTIONING OF THE INDIVIDUAL BUSINESSES WITHIN THE PROJECT AREA.
- THE CONTRACTOR SHALL TAKE ALL NECESSARY PRECAUTIONS TO PREVENT DAMAGE TO ANY AREAS ADJACENT TO NEW CONSTRUCTION.
- THE CITY WILL RETAIN ALL SALVAGE THAT IS OF VALUE AS DESIGNATED BY THE CITY'S REPRESENTATIVE. THE CITY WILL DIRECT THE CONTRACTOR AS TO THE LOCATION FOR STORAGE OF SALVAGED ITEMS. THE CONTRACTOR WILL BE RESPONSIBLE FOR REMOVING FROM THE CONSTRUCTION SITE ALL CONSTRUCTION DEBRIS AND/OR ITEMS NOT TO BE SALVAGED AS DETERMINED BY THE CITY'S REPRESENTATIVE.
- TEMPORARY BARRICADES PERTAINING TO THE CONTRACTOR'S ACTIVITIES SHALL BE INSTALLED TO PREVENT POSSIBLE INJURY TO PEDESTRIANS IN AND AROUND CONSTRUCTION AREAS IN ACCORDANCE WITH OSHA REQUIREMENTS. THE CONTRACTOR SHALL COORDINATE THIS WORK WITH THE CITY.
- UNLESS OTHERWISE NOTED, REMOVAL OF EXISTING SIDEWALK AND PAVEMENT SHALL EXTEND 6" OUT FROM THE GENERAL LINE OF THE EXISTING BUILDING FACE. EXISTING STEPS AND/OR RAMPS ARE NOT TO BE REMOVED UNLESS SPECIFICALLY NOTED. ALL EXISTING SERVICES AND UTILITIES SHALL BE MAINTAINED TO INDIVIDUAL BUSINESSES. THE CONTRACTOR SHALL COORDINATE ALL DISRUPTIONS OR DISCONTINUATION OF UTILITIES AND SERVICES WITH THE CITY, THE RESPECTIVE UTILITY COMPANY AND OWNER OF THE INDIVIDUAL BUSINESS THAT THE UTILITY SERVES.
- REFER TO ELECTRICAL DRAWINGS FOR ELECTRICAL DEMOLITION NOTATIONS.

KEYNOTE LEGEND

- EXISTING SIGNAL FOUNDATION TO BE REMOVED TO A MAXIMUM DEPTH OF 24".
- EXISTING BASE TO BE REMOVED TO A MAXIMUM DEPTH OF 24".
- MANHOLE TO BE ADJUSTED.
- EXISTING SIGN TO BE REMOVED AND REPLACED.
- REMOVE PLASTIC PLANTER (BY CITY OF BLOOMINGTON).
- WATER VALVE TO BE ADJUSTED.
- GAS VALVE TO BE ADJUSTED.
- NEWSPAPER BOX TO BE REMOVED AND REPLACED AFTER CONSTRUCTION IS COMPLETE.

REVISIONS	
NAME	DATE

ILLINOIS DEPARTMENT OF TRANSPORTATION
DEMOLITION PLAN
CITY OF BLOOMINGTON
DOWNTOWN MAIN STREET BEAUTIFICATION
FRONT STREET TO WASHINGTON STREET
SCALE: VERT.
DATE: 01-31-08
DRAWN BY: DVH
CHECKED BY: JCB

PLOT DATE = #DATES
FILE NAME = #FILES
PLOT SCALE = #SCALES
USER NAME = #ROBERT