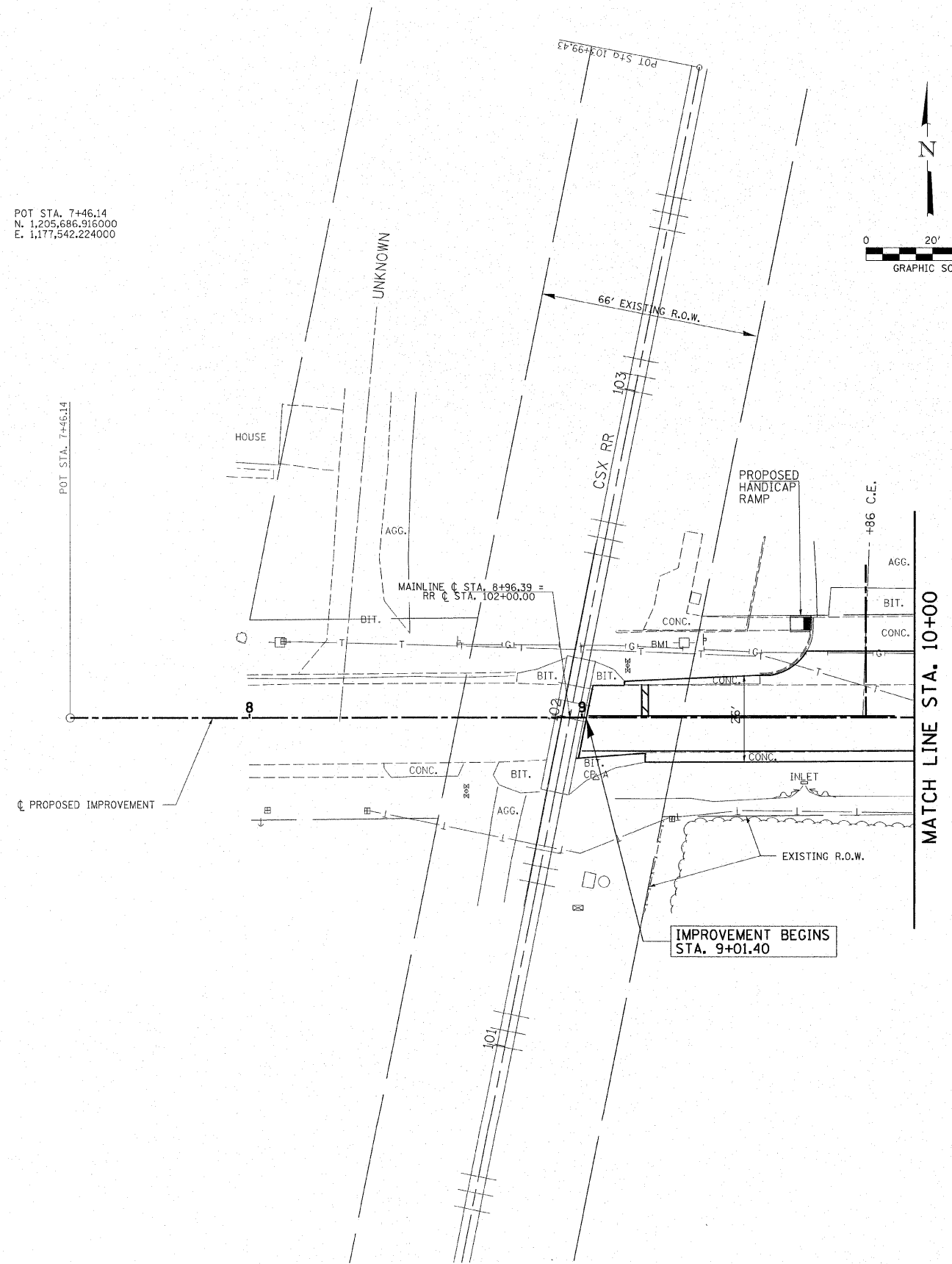
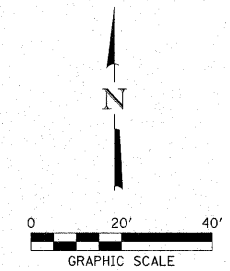


C.P. A
 17.91' RT. STA. 9+04.26
 1/2" Ø IRON PIN (SET)
 N. 1,205,669.099280
 E. 1,177,700.354520

POT STA. 7+46.14
 N. 1,205,686.916000
 E. 1,177,542.224000



FILE NAME = 93284-sht-pl-01.dgn	USER NAME =	DESIGNED - L.F.S.	REVISED -
		DRAWN - TWK	REVISED -
		CHECKED -	REVISED -
		DATE - 3/11/08	REVISED -
PLOT SCALE =			
PLOT DATE = 3/12/2008			

STATE OF ILLINOIS
 DEPARTMENT OF TRANSPORTATION

HLR HAMPTON, LENZINI & RENWICK, INC.
 CIVIL & STRUCTURAL ENGINEERS
 LAND SURVEYORS

**PLAN - WEST STREET
 GEORGETOWN**

F.A.U. 7059	SECTION 05-00155-00-RS	COUNTY VERMILION	TOTAL SHEETS 97	SHEET NO. 8
SCALE:		SHEET NO. 1 OF 5 SHEETS		STA. 7+46.14 TO STA. 10+00.00
FED. ROAD DIST. NO.		ILLINOIS FED. AID PROJECT		
CONTRACT NO. 91386				