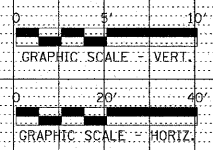
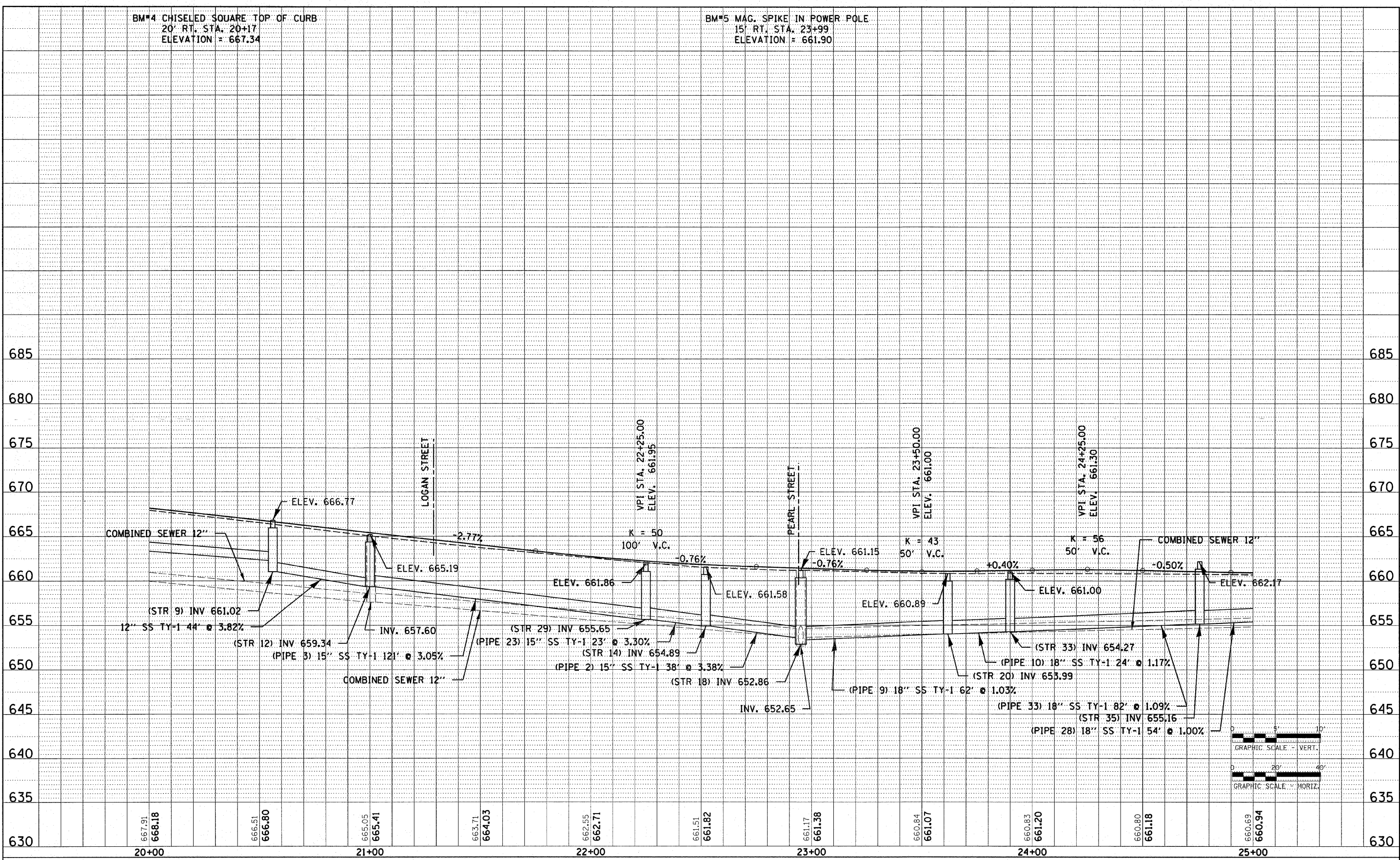


BM#4 CHISELED SQUARE TOP OF CURB
20' RT. STA. 20+17
ELEVATION = 667.34

BM#5 MAG. SPIKE IN POWER POLE
15' RT. STA. 23+99
ELEVATION = 661.90

PLAN	REVISION	DATE
NO.	NO.	
NO.	NO.	
NO.	NO.	
NO.	NO.	
NO.	NO.	

PROFILE	REVISION	DATE
NO.	NO.	
NO.	NO.	
NO.	NO.	
NO.	NO.	
NO.	NO.	



FILE NAME = 93004-sht-prf04.dgn	USER NAME =	DESIGNED - L.F.S.	REVISED -	STATE OF ILLINOIS DEPARTMENT OF TRANSPORTATION	HAMPTON, LENZINI & RENWICK, INC. CIVIL & STRUCTURAL ENGINEERS LAND SURVEYORS	PROFILE - WEST STREET GEORGETOWN	F.A.U.	SECTION	COUNTY	TOTAL SHEETS	SHEET NO.
PLOT SCALE =	DRAWN - TWK	REVISED -	7059				05-00155-00-RS	VERMILION	97	16	
PLOT DATE = 3/12/2008	CHECKED -	REVISED -	CONTRACT NO. 91386								
	DATE - 3/11/08	REVISED -	FED. ROAD DIST. NO. ILLINOIS FED. AID PROJECT								