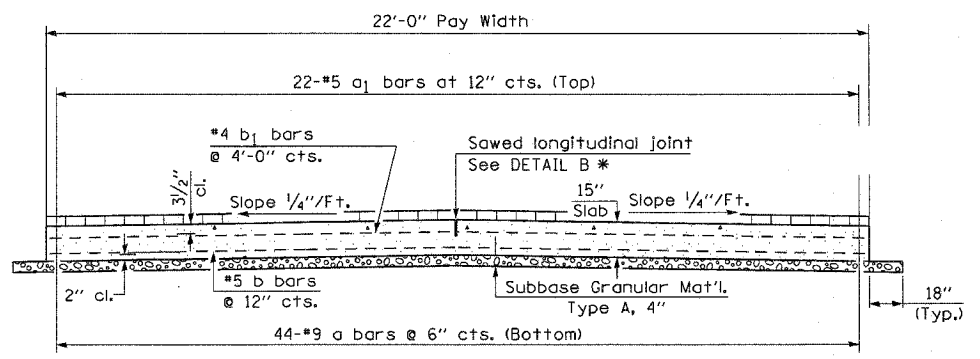
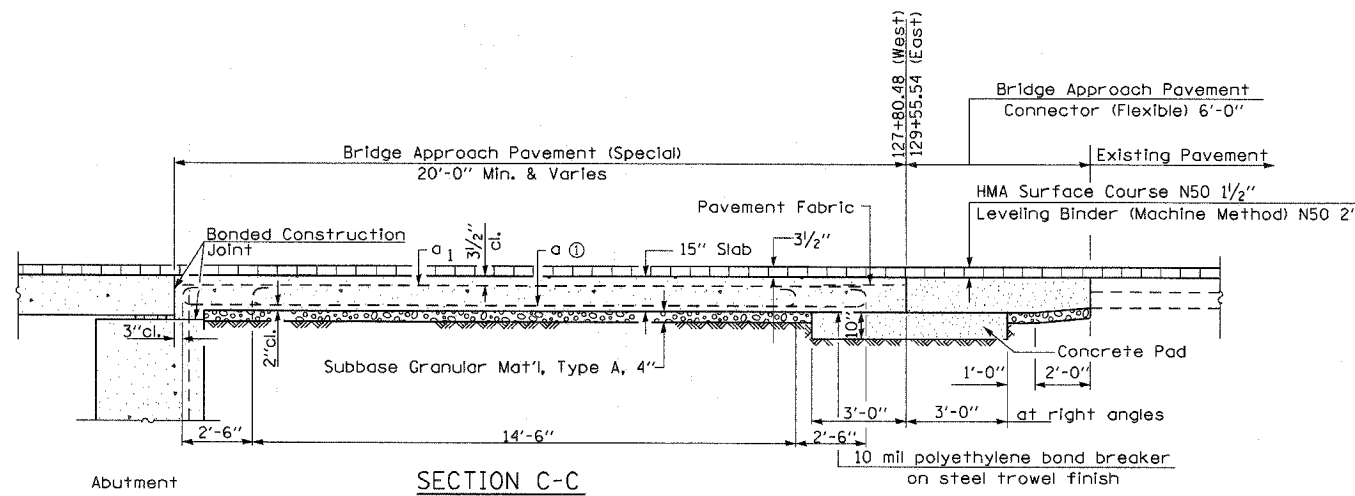
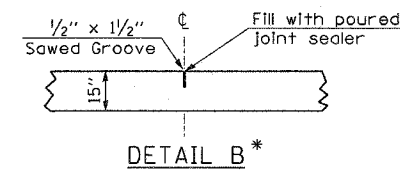
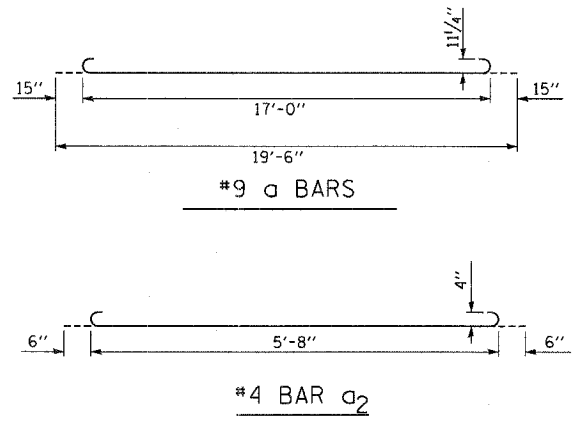
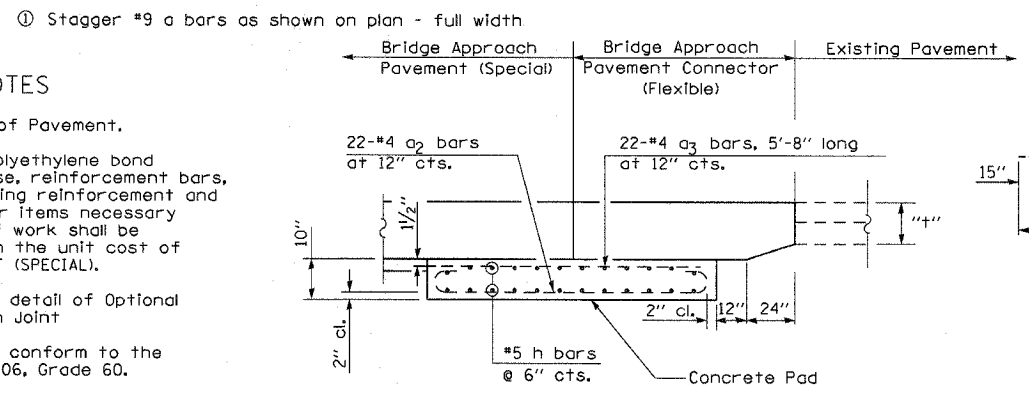


ROUTE NO.	SECTION	COUNTY	TOTAL SHEETS	SHEET
CH 8	07-00092-01-BR	SANGAMON	24	10



GENERAL NOTES

THICKNESS-"t"=Thickness of Pavement.
 The cost of the bars, polyethylene bond breaker, granular subbase, reinforcement bars, the concrete pad (including reinforcement and excavation), and all other items necessary to complete this item of work shall be considered as included in the unit cost of BRIDGE APPROACH PAVEMENT (SPECIAL).
 See Standard 420401 for detail of Optional Longitudinal Construction Joint
 Reinforcement bars shall conform to the requirements of ASTM A706, Grade 60.
 See Plan for Dimensions not shown
 All reinforcement bars shall be epoxy coated.
 See Standard 420001 for Joint details not shown

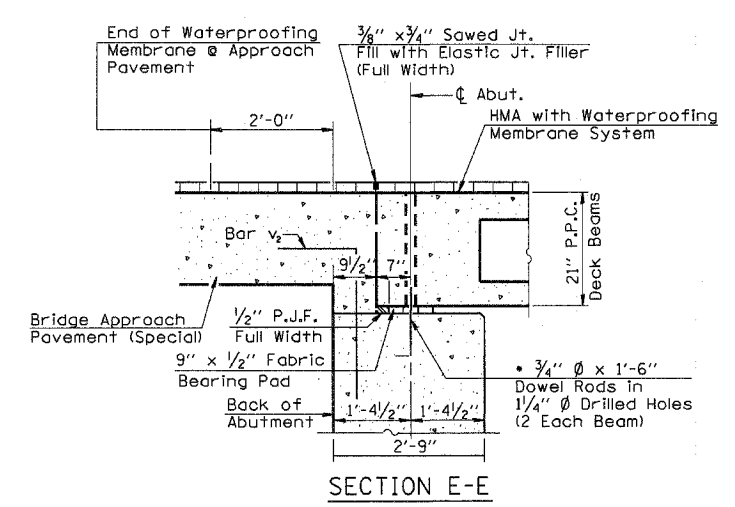
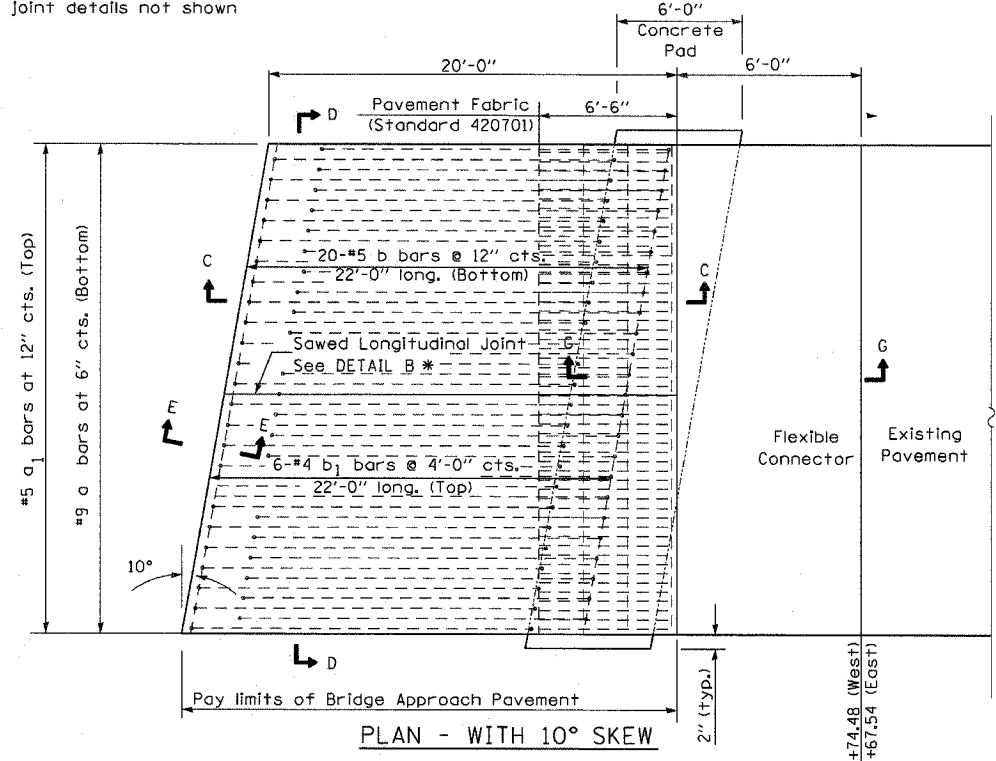


BAR LIST - 1 APPROACH SLAB
FOR INFORMATION ONLY

Bar	No.	Size	Length	Shape
a	44	#9	19'-6"	U
a1	22	#5	19'-6"	—
b	20	#5	22'-0"	—
b1	5	#4	22'-0"	—
Pavement Fabric			Sq Yd	16
Reinforcement Bars, Epoxy Coated			Pound	3900

BAR LIST - 1 CONCRETE PAD
FOR INFORMATION ONLY

Bar	No.	Size	Length	Shape
a2	22	#4	6'-8"	U
a3	22	#4	5'-8"	—
h	24	#5	22'-0"	—
Reinforcement Bars, Epoxy Coated			Pound	730



DESIGN STRESSES
 fy = 60,000 p.s.i.
 fc = 3,500 p.s.i.
 n = 8.5

BRIDGE APPROACH PAVEMENT (SPECIAL)

FAS 613 (CH 8)
SECTION 07-00092-01-BR
SANGAMON COUNTY

CUMMINS ENGINEERING CORPORATION

JOB #: 2187
FILE: 218TAPPR
DATE: 7/30/07