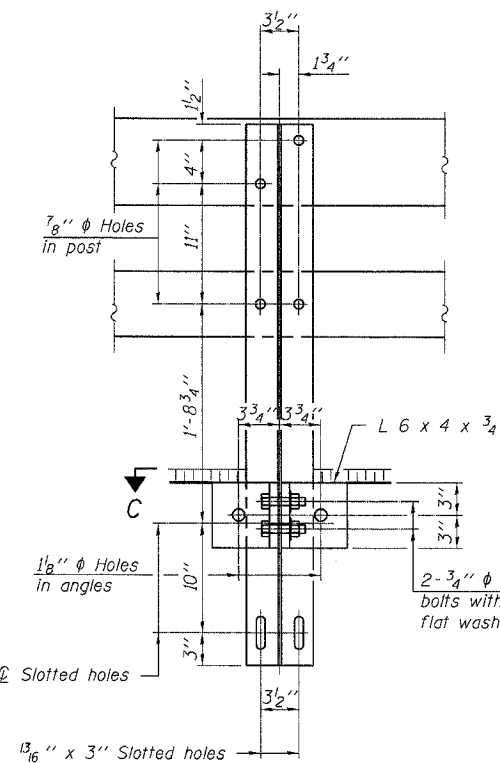
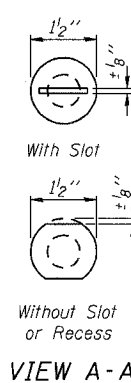
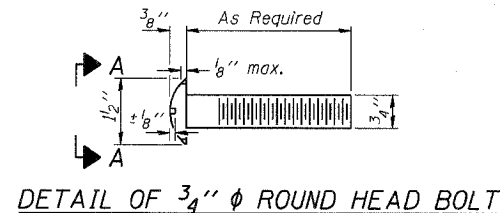
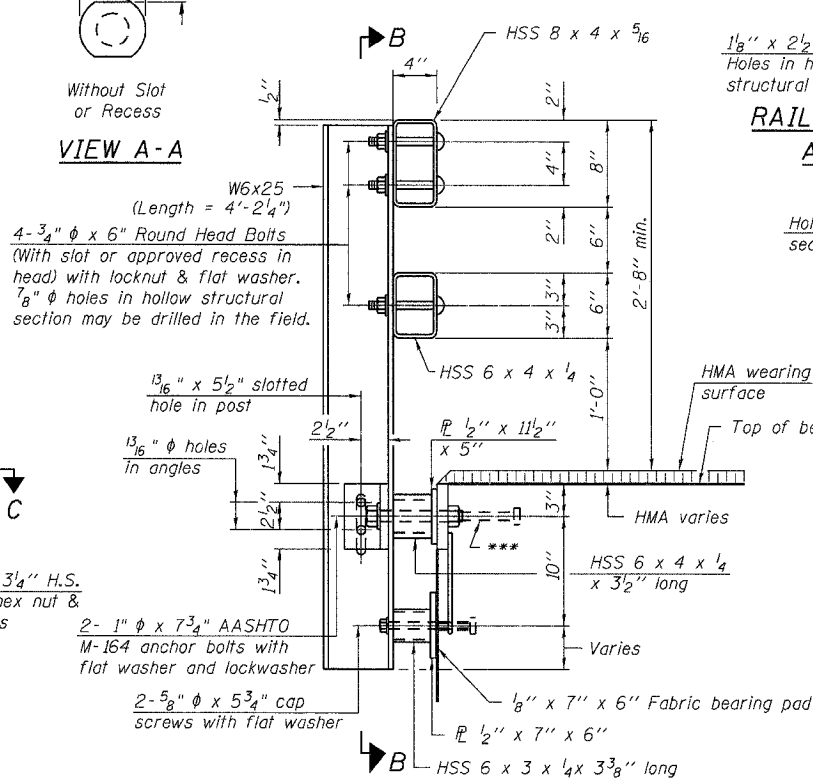


ROUTE NO.	SECTION	COUNTY	TOTAL SHEETS	SHEET NO.
C.H. 8	07-00092-01-BR	SANGAMON	24	16

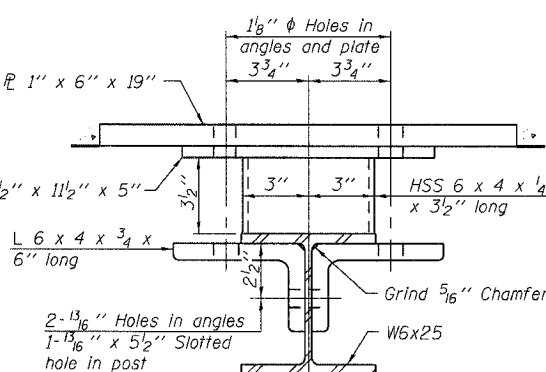
Sheet 5 of 8



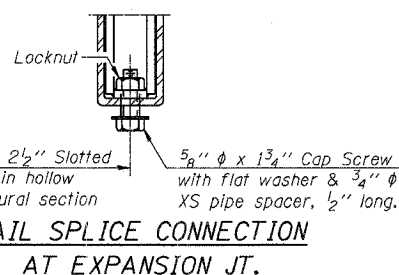
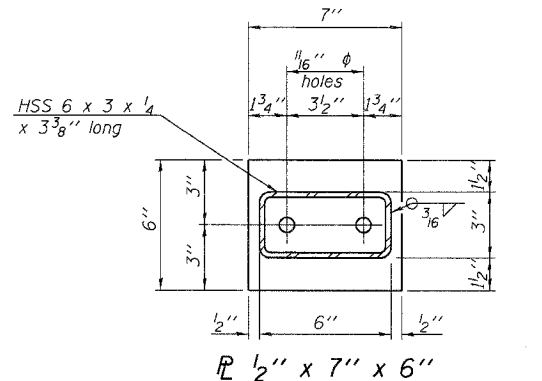
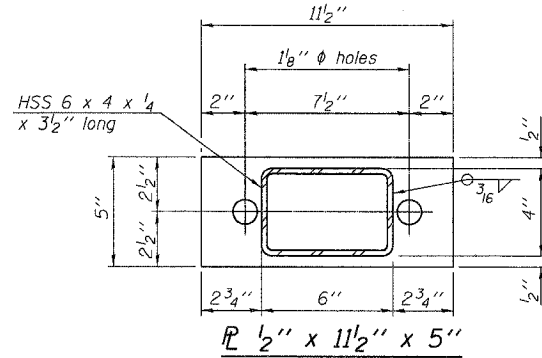
SECTION B-B



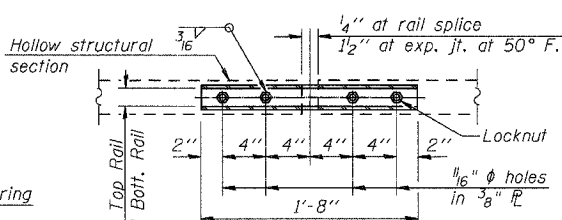
SECTION AT RAIL POST



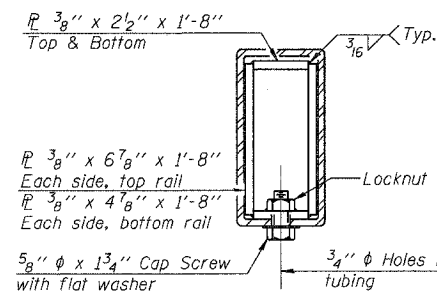
SECTION C-C



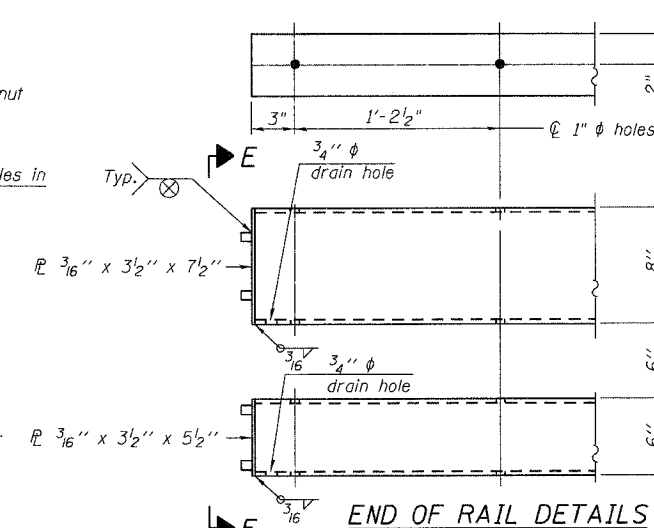
RAIL SPLICE CONNECTION AT EXPANSION JT.



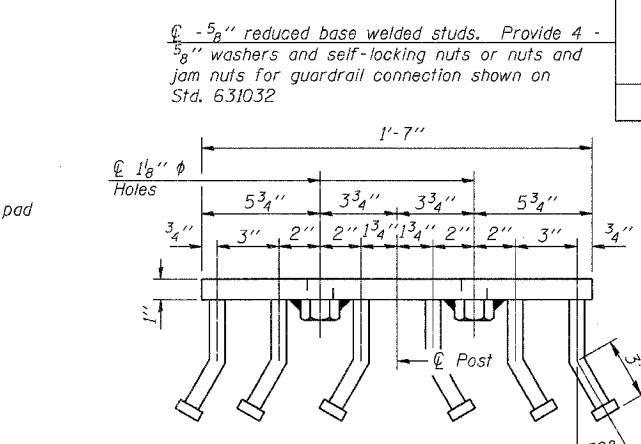
PLAN-BOTT. SPLICE P TYPICAL



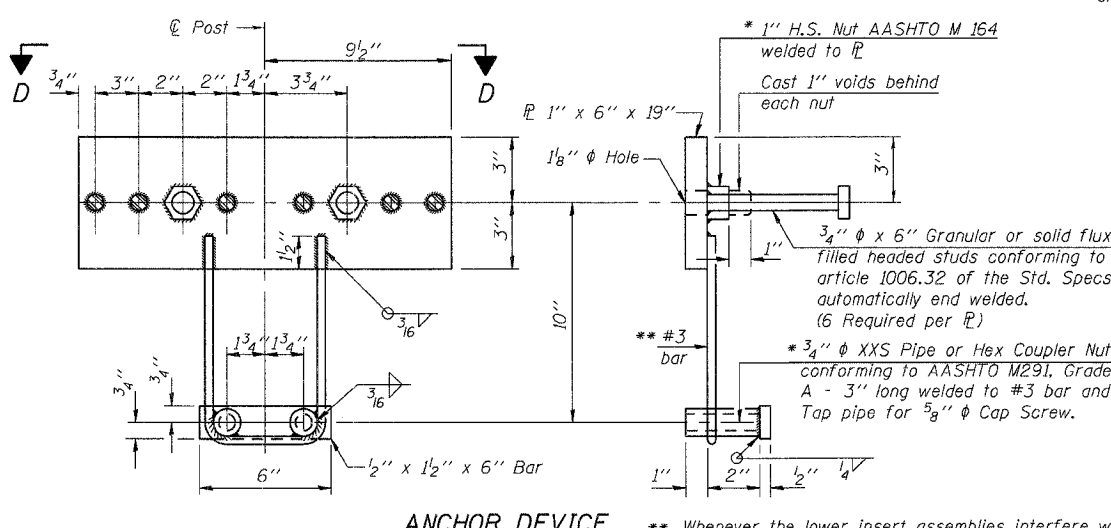
SECTION AT RAIL SPLICE



END OF RAIL DETAILS



VIEW D-D



ANCHOR DEVICE

Notes:
 All field drilled holes shall be coated with an approved zinc rich paint before erection.
 For multi-span bridges, sufficient 1/4" x 6" x 1'-2" galvanized steel shims shall be provided to align rail between adjacent spans. Cost included with Steel Bridge Rail, Type SM.
 All steel rail members shall be galvanized according to Article 509.05 of the Standard Specifications.
 *** The studs of the anchor devices shall be placed below the top reinforcement bars and the outermost longitudinal reinforcement bar shall be placed directly above the studs of the rail post anchor device.
 See Sheet 4 for Elevation View and Rail Post Spacing.

BILL OF MATERIAL

Item	Unit	Quantity
Steel Railing, Type SM	Foot	263

STEEL RAILING, TYPE SM WITH HOT-MIX ASPHALT WEARING SURFACE
 C.H. 8 OVER SPRING CREEK
 SECTION 07-00092-01-BR
 SANGAMON COUNTY
 STA. 128+68

CUMMINS ENGINEERING CORPORATION
 JOB #: 2187
 FILE: 2187RAILSM
 DATE: 2/7/08

DESIGNED	T.S.H.
CHECKED	A.A.N.
DRAWN	A.J.H.
CHECKED	M.D.C.

R-34HMAWS 11-1-06 (6'-3" Maximum Post Spacing) (1/4" minimum to 3/8" maximum HMA thickness)

* Threaded areas shall be plugged or blocked off during casting of beam. Galvanized after fabrication.
 ** Whenever the lower insert assemblies interfere with strand locations, the #3 bars shall be cut and adjusted in order to allow raising or lowering of the lower inserts. Maximum adjustment not to exceed 1/2".