

**INDEX OF SHEETS**

- 1 COVER SHEET
- 2 GENERAL NOTES, LEGEND, SUMMARY OF QUANTITIES
- 3 TYPICAL SECTIONS
- 4 SCHEDULES OF QUANTITIES
- 5-9 ROADWAY PLANS
- 10 INTERSECTION DETAILS
- 11 SPECIAL DETAILS

F.A.S. RTE.	SECTION	COUNTY	TOTAL SHEETS	SHEET NO.
608	97-00043-01-FP	SCOTT	11	1

**CONTRACT NO. 93459**

# STATE OF ILLINOIS DEPARTMENT OF TRANSPORTATION DIVISION OF HIGHWAYS

## PLANS FOR PROPOSED SURFACE TRANSPORTATION/RURAL PROGRAM (W/TARP)

### SCOTT COUNTY SECTION 97-00043-01-FP CH 7 (FAS 608)/ALSEY-GLASGOW RD PROJECT NO. SR-0608(109) JOB NO. C-96-200-01

**REQUIRED STANDARDS**

- 000001-05 STANDARD SYMBOLS, ABBREVIATIONS, AND PATTERNS
- 280001-04 TEMPORARY EROSION CONTROL SYSTEMS
- 701006-02 OFF-RD OPERATIONS 2L, 2W, 15' TO 24" FROM PAVEMENT EDGE
- 701011-01 OFF-RD MOVING OPERATIONS 2L, 2W DAY ONLY
- 701306-01 LANE CLOSURE 2L, 2W SLOW MOVING OPERATIONS - DAY ONLY FOR SPEEDS ≥ 45MPH
- 701311-02 LANE CLOSURE 2L, 2W MOVING OPERATIONS - DAY ONLY
- 701326-02 LANE CLOSURE 2L, 2W, PAVEMENT WIDENING, FOR SPEEDS ≥ 45 MPH
- 701501-04 URBAN LANE CLOSURE, 2L, 2W, UNDIVIDED
- 701901 TRAFFIC CONTROL DEVICES
- 780001-01 TYPICAL PAVEMENT MARKINGS
- BLR 24-1 MAILBOX TURNOUTS

**DESCRIPTION OF WORK**

THIS PROJECT CONSISTS OF HOT-MIX ASPHALT RESURFACING TO UPGRADE COUNTY HIGHWAY 7 FOR 80,000 LB TRUCK TRAFFIC. THE WESTERN END OF THE PROJECT WILL BE RESURFACED WITH 1 1/2" OF HOT-MIX ASPHALT MATERIAL. THE REMAINDER OF THE PROJECT WILL BE RESURFACED WITH 5 1/4" OF HOT-MIX ASPHALT MATERIAL. THE ROADWAY CROWN SHALL BE CORRECTED DURING PAVING OPERATIONS. AGGREGATE WEDGE SHOULDERS WILL BE PROVIDED. ALSO INCLUDED WILL BE HOT-MIX ASPHALT OR AGGREGATE APRONS AT SIDEROADS AND ENTRANCES, AND PAVEMENT MARKING.

**GAS & ELECTRIC**  
PANHANDLE EASTERN PIPELINE  
AMEREN CIPS  
ILLINOIS RURAL ELECTRIC COOPERATIVE

**CABLE T.V.**

**TELEPHONE**  
VERIZON NORTH, INC

**WATER & SEWER**  
ALSEY-GLASGOW WATER COMMISSION  
SMG WATER COOPERATIVE



HORIZONTAL PLAN

FULL SIZE PLANS HAVE BEEN PREPARED USING STANDARD ENGINEERING SCALES, REDUCED SIZE PLANS WILL NOT CONFORM TO STANDARD SCALES, IN MAKING MEASUREMENTS ON REDUCED PLANS, THE ABOVE SCALES MAY BE USED.

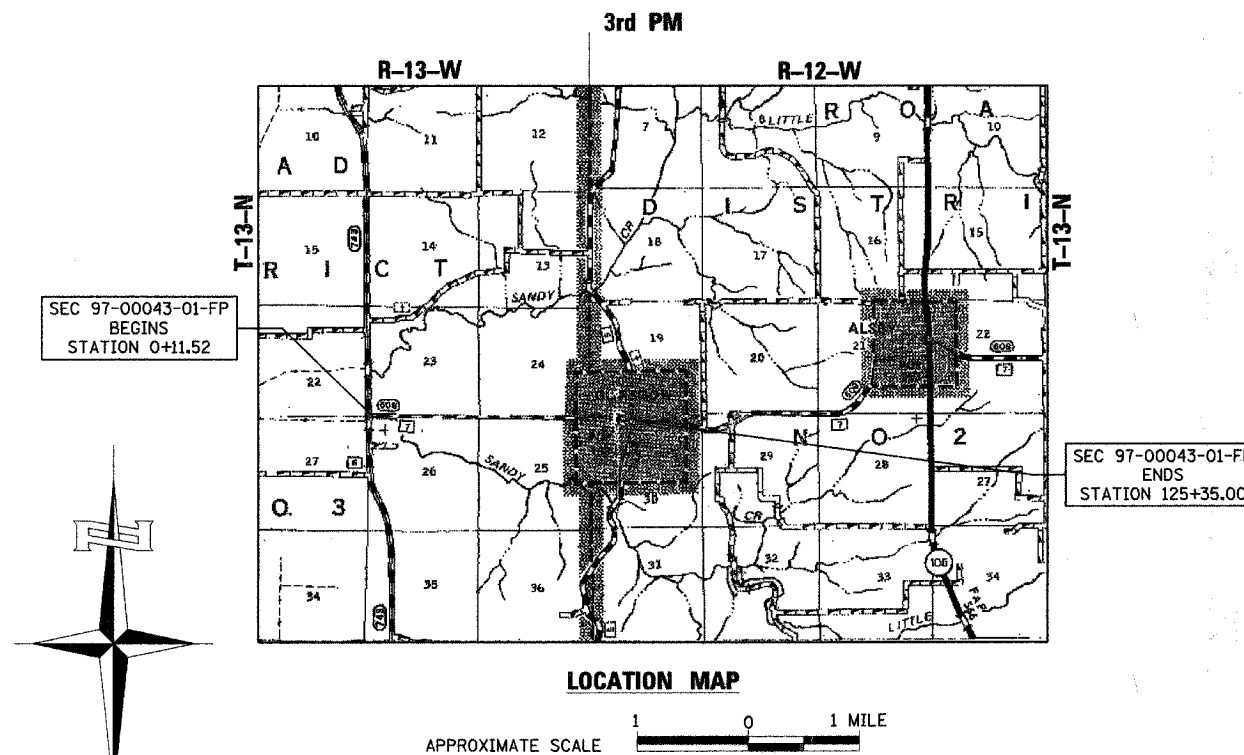
**J.U.L.I.E.**  
JOINT UTILITY LOCATION INFORMATION FOR EXCAVATION  
1-800-892-0123 OR 811

**DESIGN DESIGNATION**  
FAS 608  
RURAL COLLECTOR  
% PV = 88  
% SU = 7  
% MU = 5

ADT (2026):  
CH 7: 343

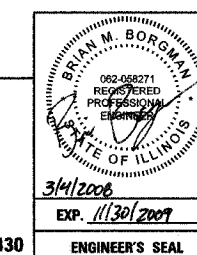
**3R GUIDELINES**

**CONTRACT NO. 93459**



TOTAL LENGTH OF PROJECT = 12,523.48 LINEAL FEET = 2.372 MILES  
NET LENGTH OF PROJECT = 12,523.48 LINEAL FEET = 2.372 MILES

**HUTCHISON ENGINEERING, INC**  
CONSULTING ENGINEERS  
JACKSONVILLE, ILLINOIS  
2008 JOB NO 2430



APPROVED	<i>Mark S</i>	20	08
	<i>Tom H. [Signature]</i>		
	COUNTY ENGINEER		
PASSED	APRIL 1	20	08
	<i>Jim [Signature]</i>		
	DISTRICT SIX ENGINEER OF LOCAL ROADS & STREETS		
PASSED	APRIL 1	20	08
	<i>[Signature]</i>		
	DISTRICT SIX ENGINEER OF CONSTRUCTION		
Releasing For Bid Based on Limited Review	APRIL 1	20	08
	<i>Christine M Reed</i>		
	DEPUTY DIRECTOR OF HIGHWAYS, REGION FOUR ENGINEER		
	STATE OF ILLINOIS DEPARTMENT OF TRANSPORTATION		

PLOT DATE = 3/4/2008  
 FILE NAME = V:\2430\97-00043-01-FP\2430C001.dgn  
 PLOT SCALE = 45,9913 / IN.  
 USER NAME = lborgman