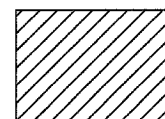
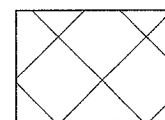


F.A.S. RTE.	SECTION	COUNTY	TOTAL SHEETS	SHEET NO.
608	97-00043-01-FP	SCOTT	11	10
FED. ROAD DIST. NO.	ILLINOIS	PROJECT NO.	SR-0608(11)	



PROPOSED HOT-MIX ASPHALT BASE COURSE WIDENING, 8" WITH HOT-MIX ASPHALT SURFACE COURSE, 1 1/2"

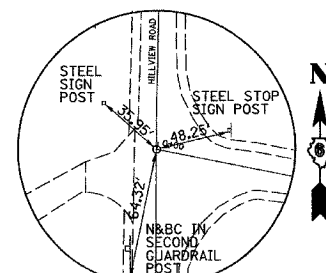


HOT-MIX ASPHALT SURFACE REMOVAL - BUTT JOINT

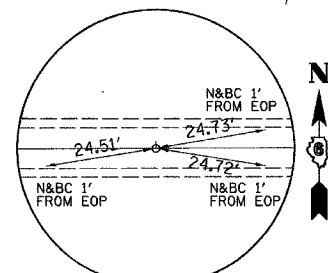
NOTE: THE TEMPORARY EROSION CONTROL ITEMS SHOWN IN THE SUMMARY OF QUANTITIES ARE ESTIMATED QUANTITIES TO BE USED FOR THOSE AREAS DISTURBED DURING CONSTRUCTION BY THE GRADING ASSOCIATED WITH THE WIDENING AND RESURFACING OF THE CH 7/HILLVIEW ROAD INTERSECTION.

PT	STATION	OFFSET	ELEVATION	NORTHING	EASTING
A1	0+50.05	13.00' LT	450.22	1050657.926	2195867.933
A2	0+40.99	16.63' LT	450.26	1050663.287	2195859.768
A3	0+32.82	21.95' LT	450.30	1050670.117	2195852.817
A4	0+25.83	28.76' LT	450.34	1050678.280	2195847.259
A5	0+13.09	50.66' LT	450.38	1050702.182	2195839.167
A6	0+06.62	64.89' LT	450.28	1050717.389	2195835.645
A7	0+00.89	79.43' LT	450.18	1050732.793	2195832.913
A8	-	-	450.08	1050748.281	2195830.991

PT	STATION	OFFSET	ELEVATION	NORTHING	EASTING
B1	1+02.75	13.27' RT	449.97	1050621.734	2195914.380
B2	0+96.35	14.19' RT	450.09	1050622.097	2195907.935
B3	0+89.99	15.28' RT	450.21	1050622.292	2195901.475
B4	0+83.65	16.53' RT	450.24	1050622.321	2195895.036
B5	0+59.70	25.28' RT	450.32	1050618.498	2195869.818
B6	0+45.25	37.79' RT	450.93	1050609.096	2195853.168
B7	0+35.47	54.20' RT	451.54	1050594.975	2195840.348
B8	0+31.35	72.86' RT	452.15	1050577.199	2195832.590

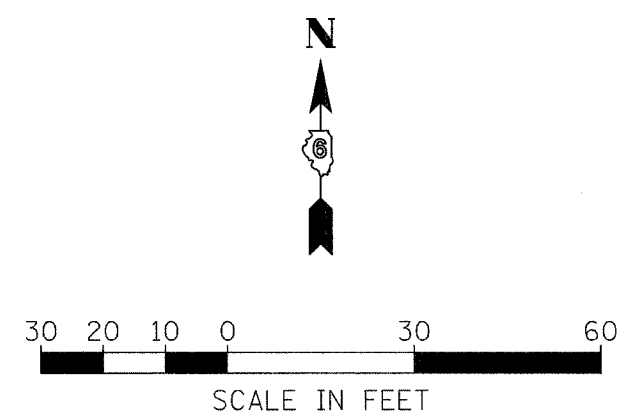
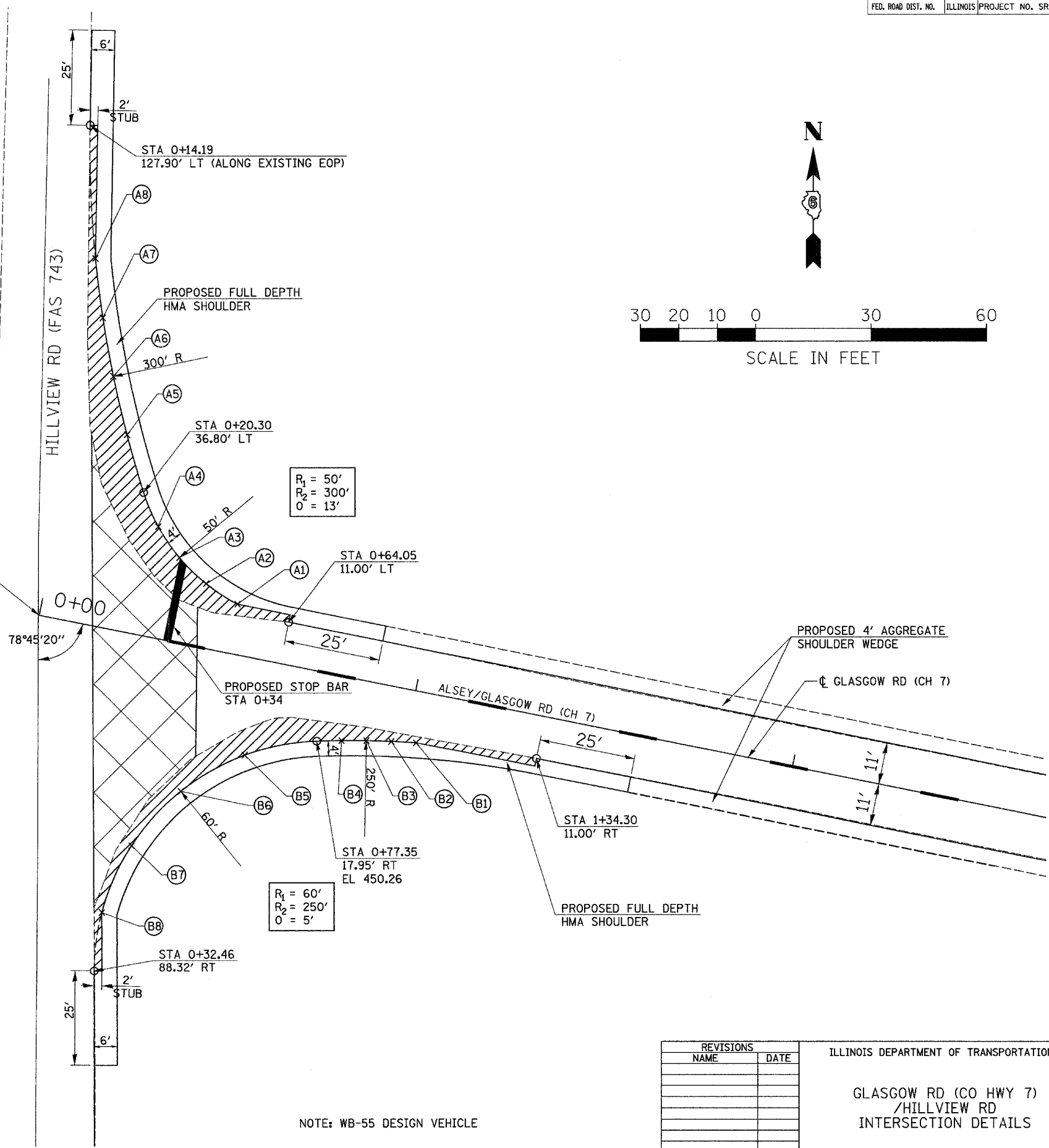


POT STA 0+00.00
N - 1050655.100 E - 2195816.301
MAG NAIL



POT STA 2+00.00
N - 1050615.471 E - 216012.336
MAG NAIL

BENCHMARK:
CHIS 1" ON THE NORTHEAST HEADWALL OF HILLVIEW
ROAD OVER LITTLE SANDY CREEK
ELEV. 454.21



REVISIONS	
NAME	DATE

ILLINOIS DEPARTMENT OF TRANSPORTATION

GLASGOW RD (CO HWY 7)
/HILLVIEW RD
INTERSECTION DETAILS

DRAWN BY:
CHECKED BY:

DATE MARCH, 2008

NOTE: WB-55 DESIGN VEHICLE