

INDEX OF SHEETS

- 1 COVER SHEET
- 2 GENERAL NOTES, LEGEND, SUMMARY OF QUANTITIES
- 3 TYPICAL SECTIONS
- 4 SCHEDULES OF QUANTITIES
- 5-9 ROADWAY PLANS
- 10 INTERSECTION DETAILS
- 11 SPECIAL DETAILS

F.A.S. RTE.	SECTION	COUNTY	TOTAL SHEETS	SHEET NO.
608	97-00043-01-FP	SCOTT	11	1

CONTRACT NO. 93459

**STATE OF ILLINOIS
DEPARTMENT OF TRANSPORTATION
DIVISION OF HIGHWAYS
PLANS FOR PROPOSED
SURFACE TRANSPORTATION/RURAL PROGRAM (W/TARP)**

**SCOTT COUNTY
SECTION 97-00043-01-FP
CH 7 (FAS 608)/ALSEY-GLASGOW RD
PROJECT NO. SR-0608(109)
JOB NO. C-96-200-01**

REQUIRED STANDARDS

- 000001-05 STANDARD SYMBOLS, ABBREVIATIONS, AND PATTERNS
- 280001-04 TEMPORARY EROSION CONTROL SYSTEMS
- 701006-02 OFF-RD OPERATIONS 2L, 2W, 15' TO 24" FROM PAVEMENT EDGE
- 701011-01 OFF-RD MOVING OPERATIONS 2L, 2W DAY ONLY
- 701306-01 LANE CLOSURE 2L, 2W SLOW MOVING OPERATIONS - DAY ONLY FOR SPEEDS ≥ 45MPH
- 701311-02 LANE CLOSURE 2L, 2W MOVING OPERATIONS - DAY ONLY
- 701326-02 LANE CLOSURE 2L, 2W, PAVEMENT WIDENING, FOR SPEEDS ≥ 45 MPH
- 701501-04 URBAN LANE CLOSURE, 2L, 2W, UNDIVIDED
- 701901 TRAFFIC CONTROL DEVICES
- 780001-01 TYPICAL PAVEMENT MARKINGS
- BLR 24-1 MAILBOX TURNOUTS

DESCRIPTION OF WORK

THIS PROJECT CONSISTS OF HOT-MIX ASPHALT RESURFACING TO UPGRADE COUNTY HIGHWAY 7 FOR 80,000 LB TRUCK TRAFFIC. THE WESTERN END OF THE PROJECT WILL BE RESURFACED WITH 1 1/2" OF HOT-MIX ASPHALT MATERIAL. THE REMAINDER OF THE PROJECT WILL BE RESURFACED WITH 5 1/4" OF HOT-MIX ASPHALT MATERIAL. THE ROADWAY CROWN SHALL BE CORRECTED DURING PAVING OPERATIONS. AGGREGATE WEDGE SHOULDERS WILL BE PROVIDED. ALSO INCLUDED WILL BE HOT-MIX ASPHALT OR AGGREGATE APRONS AT SIDEROADS AND ENTRANCES, AND PAVEMENT MARKING.

GAS & ELECTRIC
PANHANDLE EASTERN PIPELINE
AMEREN CIPS
ILLINOIS RURAL ELECTRIC COOPERATIVE

CABLE T.V.

TELEPHONE
VERIZON NORTH, INC

WATER & SEWER
ALSEY-GLASGOW WATER COMMISSION
SMG WATER COOPERATIVE



HORIZONTAL PLAN

FULL SIZE PLANS HAVE BEEN PREPARED USING STANDARD ENGINEERING SCALES, REDUCED SIZE PLANS WILL NOT CONFORM TO STANDARD SCALES, IN MAKING MEASUREMENTS ON REDUCED PLANS, THE ABOVE SCALES MAY BE USED.

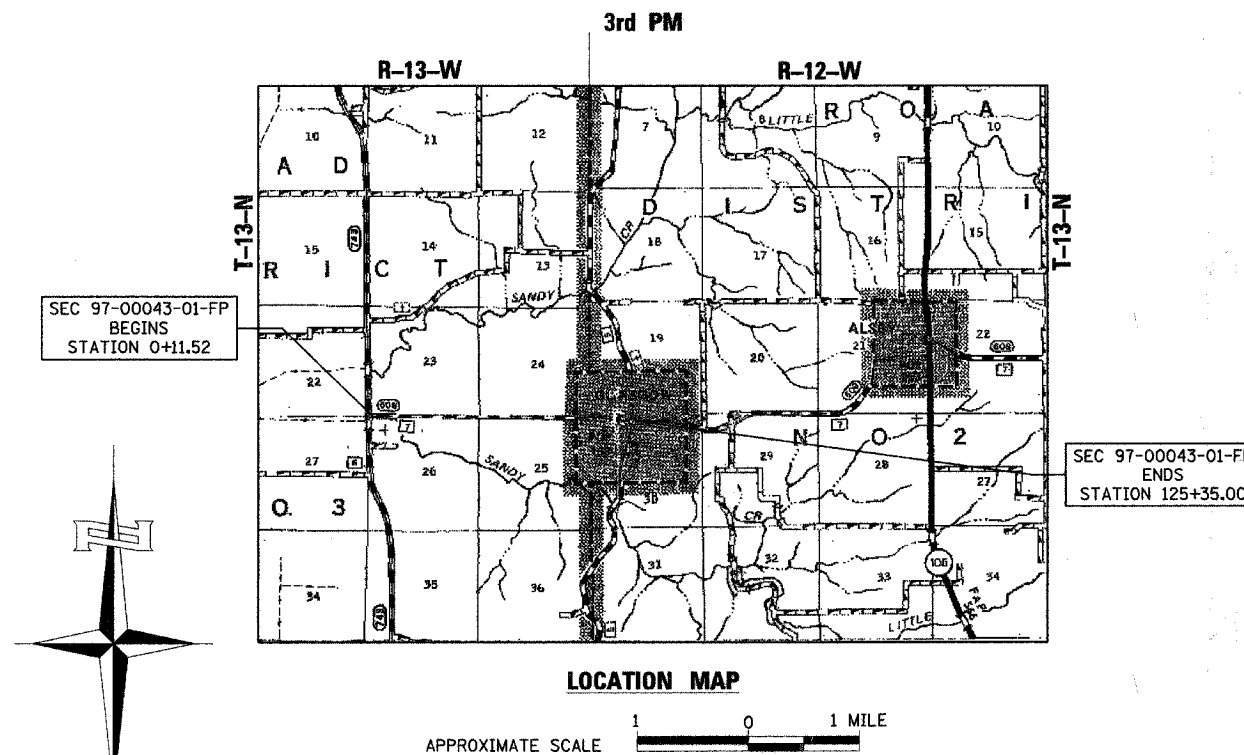
J.U.L.I.E.
JOINT UTILITY LOCATION INFORMATION FOR EXCAVATION
1-800-892-0123 OR 811

DESIGN DESIGNATION
FAS 608
RURAL COLLECTOR
% PV = 88
% SU = 7
% MU = 5

ADT (2026):
CH 7: 343

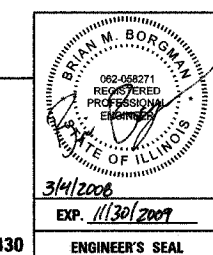
3R GUIDELINES

CONTRACT NO. 93459



TOTAL LENGTH OF PROJECT = 12,523.48 LINEAL FEET = 2.372 MILES
NET LENGTH OF PROJECT = 12,523.48 LINEAL FEET = 2.372 MILES

HUTCHISON ENGINEERING, INC
CONSULTING ENGINEERS
JACKSONVILLE, ILLINOIS
2008 JOB NO 2430



APPROVED	<i>Mark S</i>	20	08
	<i>Tom H. [Signature]</i>		
	COUNTY ENGINEER		
PASSED	APRIL 1	20	08
	<i>Jim [Signature]</i>		
	DISTRICT SIX ENGINEER OF LOCAL ROADS & STREETS		
PASSED	APRIL 1	20	08
	<i>[Signature]</i>		
	DISTRICT SIX ENGINEER OF CONSTRUCTION		
Releasing For Bid Based on Limited Review	APRIL 1	20	08
	<i>Christine M Reed</i>		
	DEPUTY DIRECTOR OF HIGHWAYS, REGION FOUR ENGINEER		
	STATE OF ILLINOIS DEPARTMENT OF TRANSPORTATION		

PLOT DATE = 3/4/2008
 FILE NAME = V:\2430\97-00043-01-FP\2430C001.dgn
 PLOT SCALE = 45,9913 / IN.
 USER NAME = lborgman

F.A.S. RTE.	SECTION	COUNTY	TOTAL SHEETS	SHEET NO.
608	97-00043-01-FP	SCOTT	11	2
STA.		TO STA.		
FED. ROAD DIST. NO.		ILLINOIS PROJECT NO. SR-0608(11)		

GENERAL NOTES

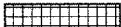

1. THE LOCATION OF UNDERGROUND UTILITIES SHOWN ON THE PLANS REPRESENTS THE BEST KNOWLEDGE OF THE COUNTY AND THE INDICATED ADJUSTMENTS OR RECONSTRUCTION ARE CONSIDERED TO BE REASONABLY ACCURATE. IT SHALL BE THE CONTRACTORS RESPONSIBILITY, AS DETAILED IN SECTION 563 OF THE STANDARD SPECIFICATIONS FOR ROAD AND BRIDGE CONSTRUCTION, TO VERIFY LOCATIONS OF UNDERGROUND INSTALLATIONS BEFORE STARTING CONSTRUCTION OPERATIONS. THE CONTRACTOR SHALL INDEMNIFY THE COUNTY, ITS OFFICERS, AND EMPLOYEES AGAINST ALL CLAIMS DUE TO DAMAGE TO CORPORATE OR PRIVATE PROPERTY RESULTING FROM HIS CONSTRUCTION OPERATIONS AS DESCRIBED IN ARTICLE 107.20 AND 107.26 OF THE STANDARD SPECIFICATIONS FOR ROAD AND BRIDGE CONSTRUCTION.
2. THE CONTRACTOR SHALL NOTIFY THE AGENCIES AND UTILITIES AT LEAST 10 (TEN) DAYS PRIOR TO ANY CONSTRUCTION IN THE AREA AND SHALL COMPLY WITH ALL RESTRICTIONS FOR EQUIPMENT MOVEMENTS AND CLEARANCES AS REGARDS TO THEIR FACILITIES.
3. BEFORE STARTING ANY EXCAVATION, THE CONTRACTOR MUST CALL J.U.L.I.E. AT 1-800-892-0123 OR 811 FOR FIELD LOCATIONS OF BURIED ELECTRICAL, TELEPHONE, GAS FACILITIES, AND ALL PUBLIC UTILITIES. A 48 HOUR NOTIFICATION IS REQUIRED.
4. WHEN DURING CONSTRUCTION OPERATIONS ANY LOOSE MATERIAL IS DEPOSITED IN THE FLOW LINE OF DITCHES, GUTTER OR DRAINAGE STRUCTURES SO THAT THE NATURAL FLOW OF WATER IS OBSTRUCTED, IT SHALL BE REMOVED AT THE CLOSE OF EACH WORKING DAY. AT THE CONCLUSION OF THE CONSTRUCTION OPERATIONS, ALL DRAINAGE STRUCTURES SHALL BE FREE FROM ALL DIRT AND DEBRIS. THIS WORK WILL NOT BE PAID FOR SEPARATELY BUT SHALL BE INCLUDED IN THE COST OF THE BITUMINOUS PAVING.
5. THE CONTRACTOR SHALL BE REQUIRED TO PROVIDE ACCESS TO ABUTTING PROPERTY AT ALL TIMES DURING THE CONSTRUCTION OF THIS IMPROVEMENT.
6. TRAFFIC CONTROL SIGNS REMOVED MUST BE RESET AT THEIR PERMANENT LOCATIONS IN A WORKMANLIKE MANNER AND VISIBLE TO TRAFFIC ON THE ROADWAY. THESE SIGNS SHALL BE INSTALLED IN ACCORDANCE WITH THE 'MANUAL ON UNIFORM TRAFFIC CONTROL DEVICES FOR STREET AND HIGHWAYS', LATEST EDITION. THE COST OF SUCH WORK SHALL BE INCLUDED IN THE COST OF THE EARTHWORK.
7. WHENEVER IT IS NECESSARY TO REMOVE EXISTING GRAVEL, CRUSHED STONE BASE OR EARTH, IN ORDER TO CONSTRUCT THE BITUMINOUS SHOULDERS, IT SHALL BE INCLUDED IN THE COST OF THE BITUMINOUS SHOULDERS. NO ADDITIONAL COMPENSATION WILL BE ALLOWED FOR ADDITIONAL LABOR OR EQUIPMENT REQUIRED.
8. THE NOMINAL THICKNESS FOR THE SURFACE COURSE IS SHOWN ON THE TYPICAL SECTION OR SPECIAL DETAILS. THE CONSTRUCTED THICKNESS OF THE ABOVE ITEMS SHALL NOT BE LESS THAN 90 PER CENT OF THE NOMINAL THICKNESS AT ANY LOCATION.
9. WHERE SECTION OR SUBSECTION STONES OR MARKERS ARE ENCOUNTERED, THE ENGINEER SHALL BE NOTIFIED BEFORE SUCH STONES ARE REMOVED. THE CONTRACTOR SHALL PROTECT AND CAREFULLY PRESERVE ALL PROPERTY MARKERS UNTIL THE OWNER, AN AUTHORIZED SURVEYOR, OR AGENT HAS WITNESSED OR OTHERWISE REFERENCED THEIR LOCATION.
10. ANY REFERENCE TO STANDARDS THROUGHOUT THE PLANS SHALL BE INTERPRETED TO BE THE LATEST STANDARDS OF THE DEPARTMENT AS SHOWN ON THE TABULATION OF REQUIRED STATE STANDARDS SHOWN IN THE PLANS.
11. ALL PROPOSED PAVEMENT WIDTHS ARE MEASURED EDGE TO EDGE OF PAVEMENT UNLESS OTHERWISE SHOWN ON THE PLANS. INTERSECTION RETURN RADII ARE MEASURED TO THE EDGE OF PAVEMENT.
12. THE FOLLOWING MIXTURE REQUIREMENTS ARE APPLICABLE FOR THIS PROJECT:

MIXTURE USE(S)	HMA SURFACE CSE	LEVELING BINDER	HMA BINDER COURSE AND BASE COURSE WIDENING	HMA SHOULDERS
AC/PG	PG 64-22	PG 64-22	PG 64-22	PG 58-22
DESIGN AIR VOIDS	4% @ N50	4% @ N50	4% @ N50	2% @ N30
MIX COMPOSITION: (GRADATION MIXTURE)	IL-9.5 OR 12.5	IL-9.5 OR 12.5	IL-19.0	ART. 1030.04(a)(3)
FRICTION AGGREGATE	MIX "C"	N/A	N/A	N/A

SUMMARY OF QUANTITIES - CONSTRUCTION TYPE CODE 1000			
CODE NO.	PAY ITEM	UNIT	QUANTITY
20200100	EARTH EXCAVATION	CU YD	74
25001000	SEEDING, CLASS 2 (SPECIAL)	ACRE	0.5
28000400	PERIMETER EROSION BARRIER	FOOT	320
35600708	HOT-MIX ASPHALT BASE COURSE WIDENING, 8"	SQ YD	150
40200800	AGGREGATE SURFACE COURSE, TYPE B	TON	89
40600100	BITUMINOUS MATERIALS (PRIME COAT)	GALLON	2,216
40600300	AGGREGATE (PRIME COAT)	TON	60
40600625	LEVELING BINDER (MACHINE METHOD), N50	TON	3,277
40600895	CONSTRUCTING TEST STRIP	EACH	2
40600982	HOT-MIX ASPHALT SURFACE REMOVAL - BUTT JOINT	SQ YD	439
40600990	TEMPORARY RAMP	SQ YD	81
40603080	HOT-MIX ASPHALT BINDER COURSE, IL 19.0, N50	TON	3,918
40603310	HOT-MIX ASPHALT SURFACE COURSE, MIX "C", N50	TON	2,810
48102100	AGGREGATE WEDGE SHOULDERS, TYPE B	TON	3,568
48203029	HOT-MIX ASPHALT SHOULDERS, 8"	SQ YD	180
67100100	MOBILIZATION	L SUM	1
70103700	TRAFFIC CONTROL COMPLETE	L SUM	1
70300100	SHORT TERM PAVEMENT MARKING	FOOT	2,505
70300230	TEMPORARY PAVEMENT MARKING - LINE 5"	FOOT	34,135
70300280	TEMPORARY PAVEMENT MARKING - LINE 24"	FOOT	43
70301000	WORK ZONE PAVEMENT MARKING REMOVAL	SQ FT	835
78001120	PAINT PAVEMENT MARKING - LINE 5"	FOOT	34,135
78001180	PAINT PAVEMENT MARKING - LINE 24"	FOOT	43
Z0013798	CONSTRUCTION LAYOUT	L SUM	1

- SEE SPECIAL PROVISIONS
 - Δ SPECIALTY ITEMS
- THE FOLLOWING RATES OF APPLICATION HAVE BEEN ASSUMED IN CALCULATING PLAN QUANTITIES :
- AGGREGATE (SURFACE, BASE, SUBBASE, OR BACKFILL) — 2.05 TON/CUBIC YARD
 BITUMINOUS MATERIALS (PRIME COAT) — 0.075 GAL/SQUARE YARD
 HMA SURFACE/BINDER (112 LBS) — 0.056 TON/SQUARE YARD*INCH

LEGEND

-  HOT-MIX ASPHALT SURFACE REMOVAL - BUTT JOINT
-  PROPOSED WIDENING

REVISIONS	
NAME	DATE

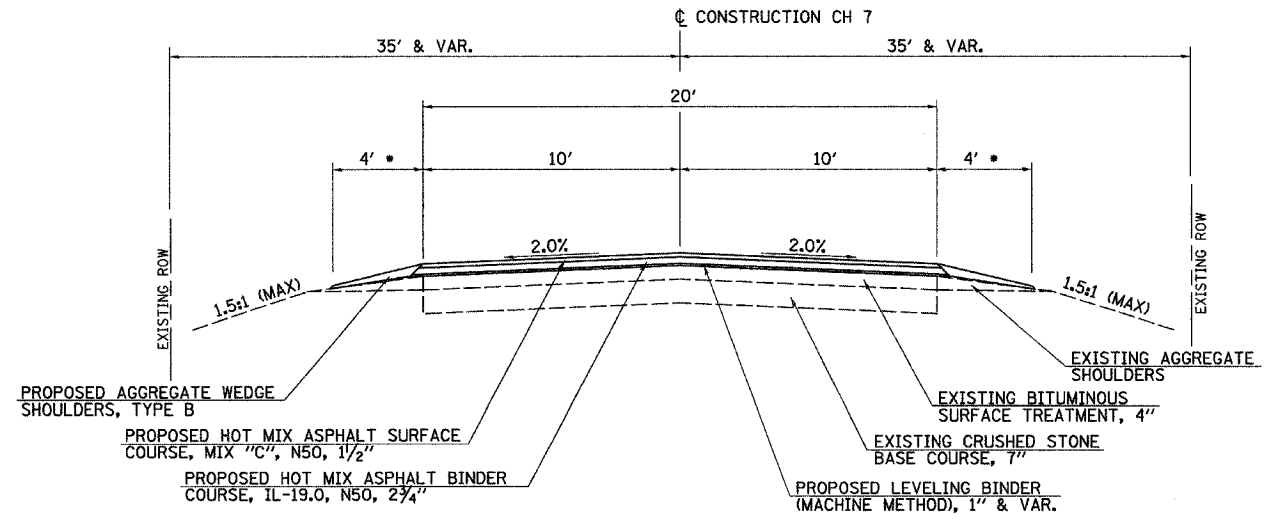
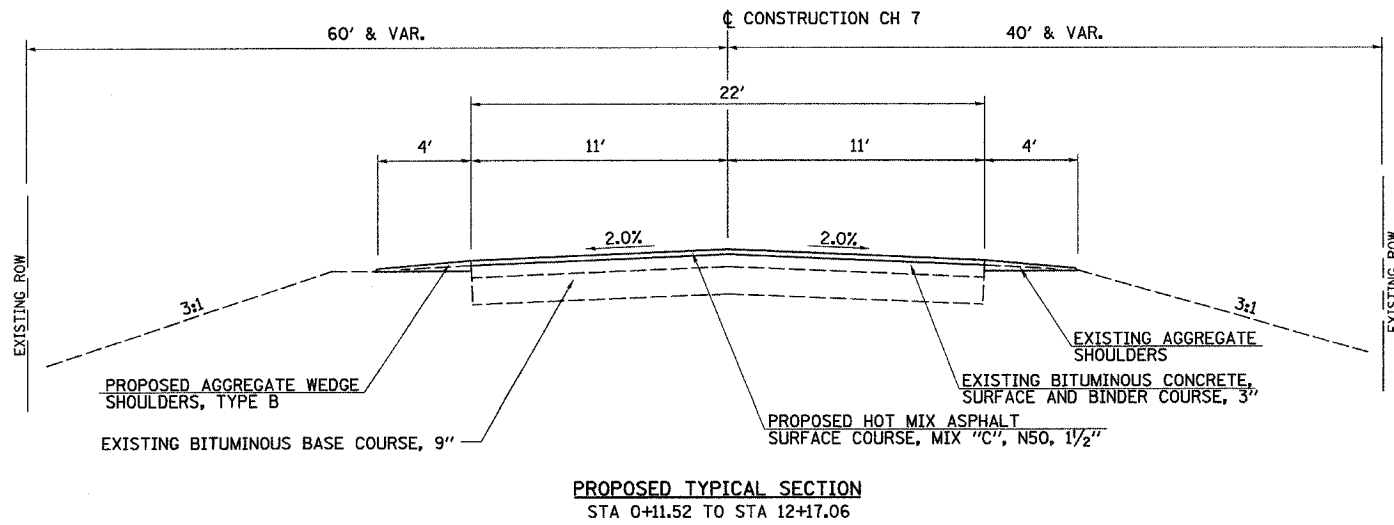
ILLINOIS DEPARTMENT OF TRANSPORTATION

COUNTY HIGHWAY 7
 GENERAL NOTES, LEGEND,
 SUMMARY/SCHEDULE OF QUANTITIES

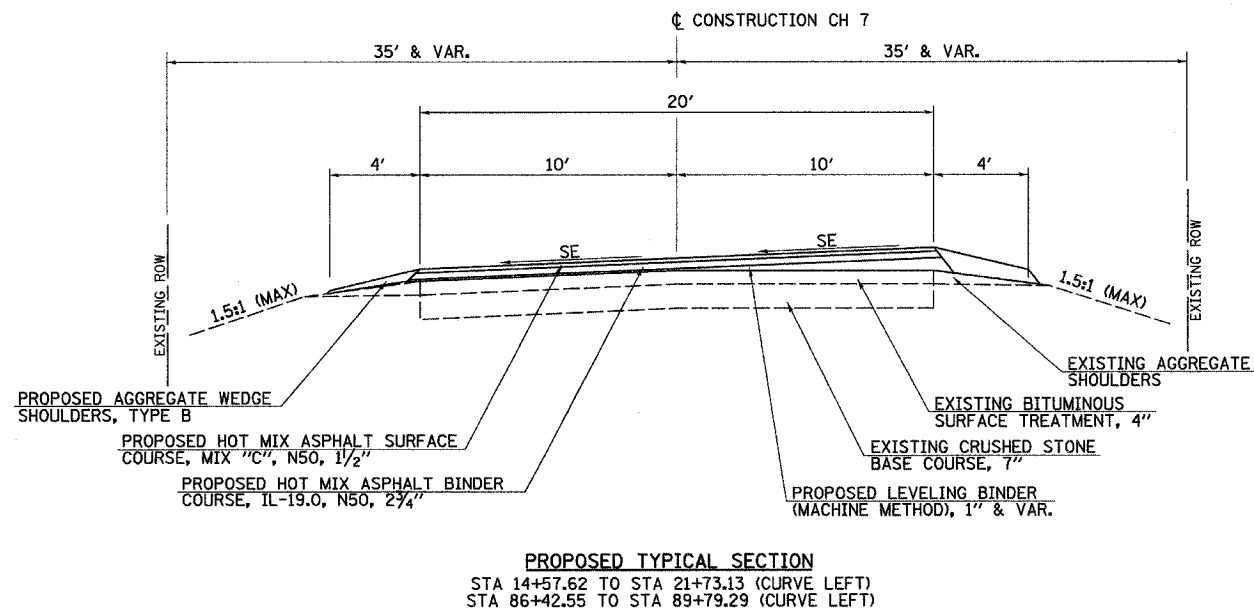
SCALE: VERT. _____
 HORIZ. _____
 DATE _____

DRAWN BY TJD
 CHECKED BY JRB

F.A.S. RTE.	SECTION	COUNTY	TOTAL SHEETS	SHEET NO.
608 97-00043-01-FP		SCOTT	11	3
STA.	TO STA.			
FED. ROAD DIST. NO.	ILLINOIS	PROJECT NO SR-0608(111)		



• REDUCE SHOULDER WIDTH TO 2' FROM STA 121+00 TO STA 125+35 IN GLASGOW



REVISIONS	
NAME	DATE

ILLINOIS DEPARTMENT OF TRANSPORTATION

PROPOSED TYPICAL SECTIONS
COUNTY HIGHWAY 7

SCALE: DATE: MARCH, 2008

DRAWN BY: CHECKED BY:

NOTES: SEE CURVE DATA ON PLAN SHEETS FOR SUPERELEVATION RATES AND TRANSITION LENGTHS.

MAXIMUM SHOULDER ROLLOVER FACTOR NOT TO EXCEED 12%.

PLOT DATE = 3/6/2008
FILE NAME = N:\24300\97-00043-01-FP\2430-001.dgn
PLOT SCALE = 0.5982' / IN.
USER NAME = bbergman

F.A.S. RTE.	SECTION	COUNTY	TOTAL SHEETS	SHEET NO.
608	97-00043-01-FP	SCOTT	11	4
STA.		TO STA.		
FED. ROAD DIST. NO.	ILLINOIS PROJECT NO	SR-0608(111)		

PAVEMENT SCHEDULE

STATION TO STATION		EARTH EXCAVATION	HOT-MIX ASPHALT BASE COURSE WIDENING, 8"	AGGREGATE SURFACE COURSE, TYPE B	BITUMINOUS MATERIALS (PRIME COAT)	AGGREGATE (PRIME COAT)	LEVELING BINDER (MACHINE METHOD)	HOT-MIX ASPHALT SURFACE REMOVAL - BUTT JOINT	HOT-MIX ASPHALT BINDER COURSE, IL 19.0, N50	HOT-MIX ASPHALT SURFACE COURSE, MIX "C", N50	AGGREGATE WEDGE SHOULDERS, TYPE B	HOT-MIX ASPHALT SHOULDERS, 8"
		CU YD	SQ YD	TON	GALLON	TON		SQ YD		TON		SQ YD
0+11.52	1+34.30	73.3	149.8		45.6	1.2		205.2		51.1	20.5	179.3
1+34.30	12+17.06				200.8	5.4				223.6	109.5	
12+17.06	125+35.00				1,968.8	52.5	3,276.3	233.3	3,917.8	2,337.2	3,437.4	
SIDEROADS										79.9		
ENTRANCES				88.9						100.7		
MAILBOX TURNOUTS										17.0		
TOTALS		73.3	149.8	88.9	2,215.2	59.1	3,276.3	438.5	3,917.8	2,809.5	3,567.4	179.3
USE		74	150	89	2,216	60	3,277	439	3,918	2,810	3,568	180

PAVEMENT MARKING SCHEDULE

STATION TO STATION		SIDE	DESCRIPTION	PAINT PAVEMENT MARKING		
				LINE - 5" (YELLOW)	LINE - 5" (WHITE)	24" STOP BAR (WHITE)
				FOOT		
0+11.52	1+34.30	RT & LT	EDGE LINES		373.6	
0+34.00		LT	STOP BAR			21.0
0+34.00	53+20.00	CL	SKIP-DASH	1,321.5		
1+34.30	123+45.00	RT & LT	EDGE LINES		24,421.4	
39+25.00	53+20.00	CL	EB NPZ	1,395.0		
53+20.00	95+10.00	CL	DOUBLE NPZ	4,190.0		
95+10.00	125+35.00	CL	SKIP-DASH	756.3		
95+10.00	109+50.00	CL	WB NPZ	1,440.0		
123+45.00		RT	STOP BAR			11.0
124+30.00		LT	STOP BAR			11.0
124+30.00	125+35.00	RT & LT	EDGE LINES		210.0	
124+30.00	125+35.00	CL	SKIP-DASH	26.3		
TOTALS				9,129.1	25,005.0	43.0
USE				34,135		43

REVISIONS	
NAME	DATE

ILLINOIS DEPARTMENT OF TRANSPORTATION

COUNTY HIGHWAY 7
SCHEDULES OF QUANTITIES

SCALE: VERT.
DATE HORIZ.

DRAWN BY TJD
CHECKED BY JRB

F.A.S. RTE.	SECTION	COUNTY	TOTAL SHEETS	SHEET NO.
608	97-00043-01-FP	SCOTT	11	5
STA. 0+11.52		TO STA. 30+00		
FED. ROAD DIST. NO.		ILLINOIS PROJECT NO SR-0608(111)		

PROP. CURVE CH7-1
 P.I. STA. = 9467.44
 $\Delta = 2^\circ 54' 08''$ (L.T.)
 $D = 97' 34'' 66''$
 $R = 9,842.50'$
 $T = 248.33'$
 $L = 498.66'$
 $E = 3.16'$
 $e = NC$
 P.C. STA. = 7418.10
 P.T. STA. = 12416.66



PROPOSED PAVEMENT WIDTH TRANSITION
 STA 12+17.06 TO STA 13+17.06

CONSTRUCTION CH 7
 (ALSEY-GLASGOW RD)

PROPOSED VARIABLE WIDTH
 HOT-MIX ASPHALT SHOULDER
 SEE INTERSECTION DETAILS

PROPOSED HOT-MIX ASPHALT SURFACE
 REMOVAL BUTT JOINT

PROPOSED 4' AGGREGATE SHOULDER

EXISTING S.O.M. LINE

PROPOSED 4' HOT-MIX ASPHALT SHOULDER

SECTION 97-00043-01-FP
 BEGINS STATION 0+11.52

ALSEY-GLASGOW RD (CH 7)

- ① RESURFACE 1/2"
- ② RESURFACE 3/4"

PROP. CURVE CH7-2
 P.I. STA. = 18+15.78
 $\Delta = 7^\circ 49' 49''$ (L.T.)
 $D = 1^\circ 30' 00''$
 $R = 3,813.72'$
 $T = 261.41'$
 $L = 522.01'$
 $E = 8.93'$
 $e = 4.00\%$
 P.C. STA. = 15+54.37
 P.T. STA. = 20+16.38
 S.E. ATTAINED STA 14+57.62 TO STA 19+86.62
 S.E. REMOVED STA 20+44.13 TO STA 21+73.13

PROPOSED 4' AGGREGATE SHOULDER

EXISTING S.O.M. LINE

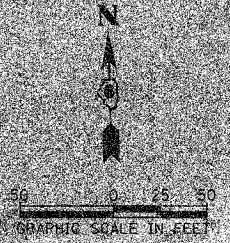
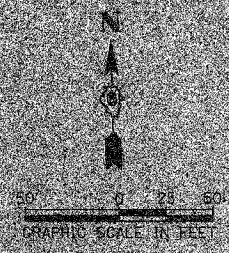
CONSTRUCTION CH 7
 (ALSEY-GLASGOW RD)

PROPOSED 4' AGGREGATE SHOULDER



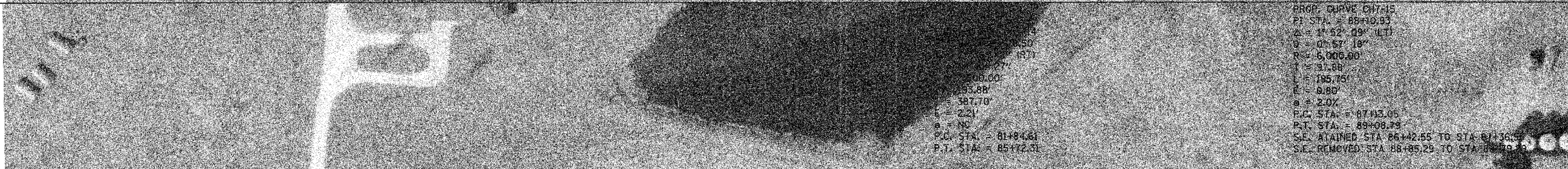
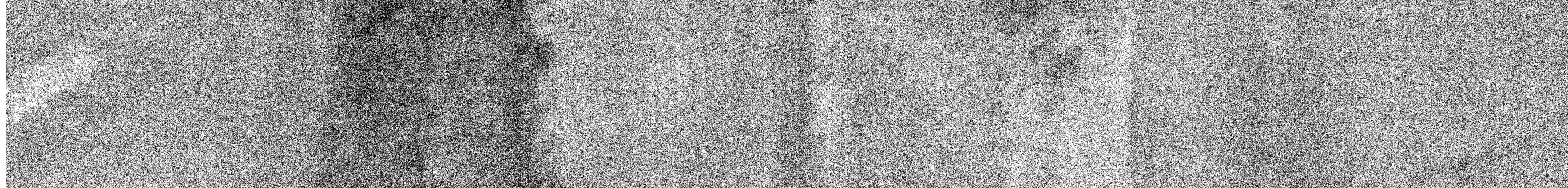
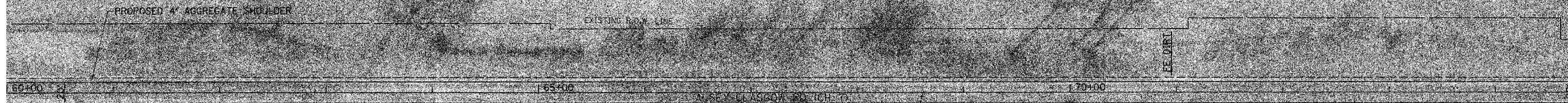
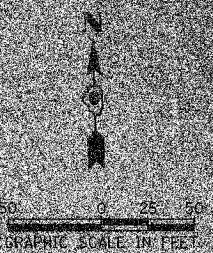
PLOT DATE = 3/5/2008
 PLOT TIME = 3:45:30 PM
 PLOT SCALE = 43.500 / 1" IN.
 USER NAME = bberghman

F.A.S. RTE.	SECTION	COUNTY	TOTAL SHEETS	SHEET NO.
608	97-00043-01-FP	SCOTT	11	6
STA. 30+00		TO STA. 60+00		
FED. ROAD DIST. NO.	ILLINOIS	PROJECT NO SR-0608(111)		



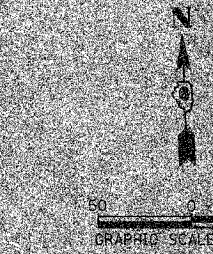
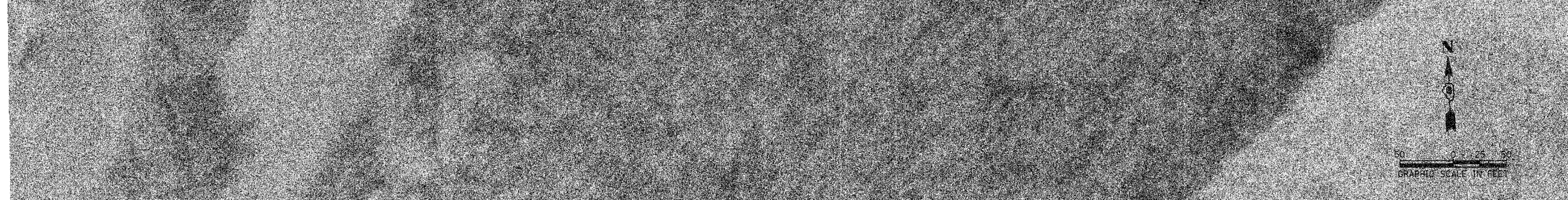
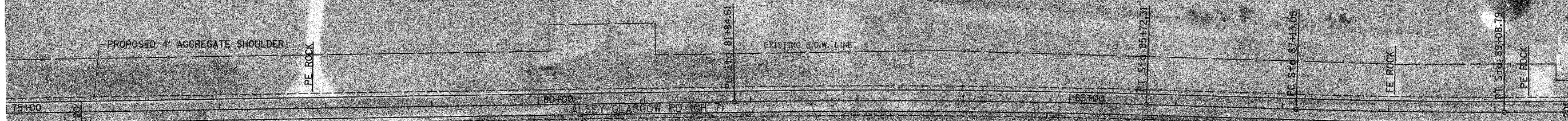
PLOT DATE = 9/5/2008
FILE NAME = W:\2008\97-00043-01-FP\2436-002.dgn
PLOT SCALE = 49.999 // IN.
USER NAME = bborjman

F.A.S. RTE.	SECTION	COUNTY	TOTAL SHEETS	SHEET NO.
608	97-00043-01-FP	SCOTT	11	7
STA. 60+00		TO STA. 90+00		
FED. ROAD DIST. NO.		ILLINOIS PROJECT NO SR-0608(111)		



CH 15
 Δ = 1° 52' 09" (LT)
 R = 6,000.00'
 L = 37.88'
 E = 185.75'
 a = 2.07'
 P.C. STA. = 81+84.61
 P.T. STA. = 85+72.31

PROP. CURVE CH-15
 P.I. STA. = 88+10.93
 Δ = 1° 52' 09" (LT)
 R = 6,000.00'
 L = 37.88'
 E = 185.75'
 a = 2.07'
 P.C. STA. = 87+13.05
 P.T. STA. = 89+08.79
 S.E. ATTAINED STA. 86+42.55 TO STA. 87+13.05
 S.E. REMOVED STA. 88+85.29 TO STA. 89+08.79



PLOT DATE = 3/5/2008
 FILE NAME = V:\2430\97-00043-01-FP\2430-002.dgn
 USER NAME = 45361 / JN
 USER NAME = 5809man

F.A.S. RTE.	SECTION	COUNTY	TOTAL SHEETS	SHEET NO.
608	97-00043-01-FP	SCOTT	11	8
STA. 90+00		TO STA.120+00		
FED. ROAD DIST. NO.		ILLINOIS PROJECT NO SR-0608(11)		



PROP. CURVE CH7-3
 P.I. STA. = 107+31.11
 $\Delta = 4^{\circ} 10' 00''$ (RT)
 $D = 0^{\circ} 40' 00''$
 $R = 8,594.33'$
 $T = 312.64'$
 $L = 625.00'$
 $E = 5.68'$
 $\phi = \text{NO}$
 P.C. STA. = 104+16.48
 P.T. STA. = 110+43.47



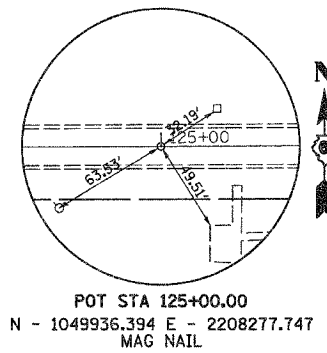
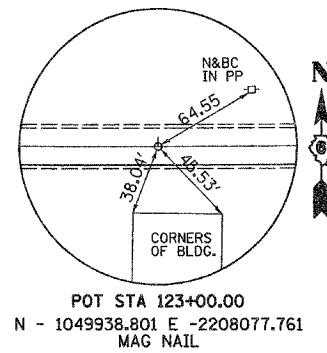
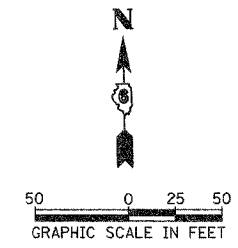
PROP. CURVE CH7-3
 P.I. STA. = 107+31.11
 $\Delta = 4^{\circ} 10' 00''$ (RT)
 $D = 0^{\circ} 40' 00''$
 $R = 8,594.33'$
 $T = 312.64'$
 $L = 625.00'$
 $E = 5.68'$
 $\phi = \text{NO}$
 P.C. STA. = 104+16.48
 P.T. STA. = 110+43.47

PROP. CURVE CH7-4
 P.I. STA. = 119+51.89
 $\Delta = 5^{\circ} 44' 32''$ (LT)
 $D = 0^{\circ} 48' 00''$
 $R = 7,161.98'$
 $T = 358.04'$
 $L = 717.08'$
 $E = 6.98'$
 $\phi = \text{NC}$
 P.C. STA. = 115+33.05
 P.T. STA. = 123+10.13



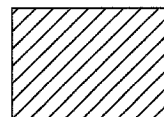
PLOT DATE = 9/6/2008
 FILE NAME = VA243097-00043-01-FP243098.dgn
 PLOT SCALE = 48:989 / IN.
 USER NAME = bborngman

F.A.S. RTE.	SECTION	COUNTY	TOTAL SHEETS	SHEET NO.
608	97-00043-01-FP	SCOTT	11	9
STA. 120+00		TO STA. 135+00		
FED. ROAD DIST. NO.		ILLINOIS PROJECT NO SR-0608(111)		



PLOT DATE = 9/7/2009
FILE NAME = V:\2430\97-00043-01-FP\2430p009.dgn
PLOT SCALE = 49.509' / IN.
USER NAME = bbergman

F.A.S. RTE.	SECTION	COUNTY	TOTAL SHEETS	SHEET NO.
608	97-00043-01-FP	SCOTT	11	10
FED. ROAD DIST. NO.	ILLINOIS	PROJECT NO.	SR-0608(11)	



PROPOSED HOT-MIX ASPHALT BASE COURSE WIDENING, 8" WITH HOT-MIX ASPHALT SURFACE COURSE, 1 1/2"

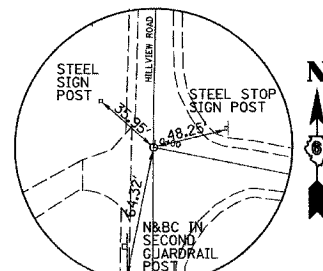


HOT-MIX ASPHALT SURFACE REMOVAL - BUTT JOINT

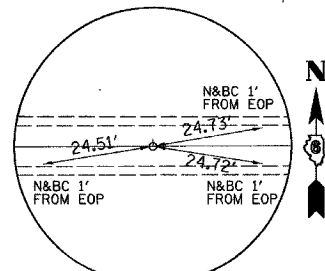
NOTE: THE TEMPORARY EROSION CONTROL ITEMS SHOWN IN THE SUMMARY OF QUANTITIES ARE ESTIMATED QUANTITIES TO BE USED FOR THOSE AREAS DISTURBED DURING CONSTRUCTION BY THE GRADING ASSOCIATED WITH THE WIDENING AND RESURFACING OF THE CH 7/HILLVIEW ROAD INTERSECTION.

PT	STATION	OFFSET	ELEVATION	NORTHING	EASTING
A1	0+50.05	13.00' LT	450.22	1050657.926	2195867.933
A2	0+40.99	16.63' LT	450.26	1050663.287	2195859.768
A3	0+32.82	21.95' LT	450.30	1050670.117	2195852.817
A4	0+25.83	28.76' LT	450.34	1050678.280	2195847.259
A5	0+13.09	50.66' LT	450.38	1050702.182	2195839.167
A6	0+06.62	64.89' LT	450.28	1050717.389	2195835.645
A7	0+00.89	79.43' LT	450.18	1050732.793	2195832.913
A8	-	-	450.08	1050748.281	2195830.991

PT	STATION	OFFSET	ELEVATION	NORTHING	EASTING
B1	1+02.75	13.27' RT	449.97	1050621.734	2195914.380
B2	0+96.35	14.19' RT	450.09	1050622.097	2195907.935
B3	0+89.99	15.28' RT	450.21	1050622.292	2195901.475
B4	0+83.65	16.53' RT	450.24	1050622.321	2195895.036
B5	0+59.70	25.28' RT	450.32	1050618.498	2195869.818
B6	0+45.25	37.79' RT	450.93	1050609.096	2195853.168
B7	0+35.47	54.20' RT	451.54	1050594.975	2195840.348
B8	0+31.35	72.86' RT	452.15	1050577.199	2195832.590

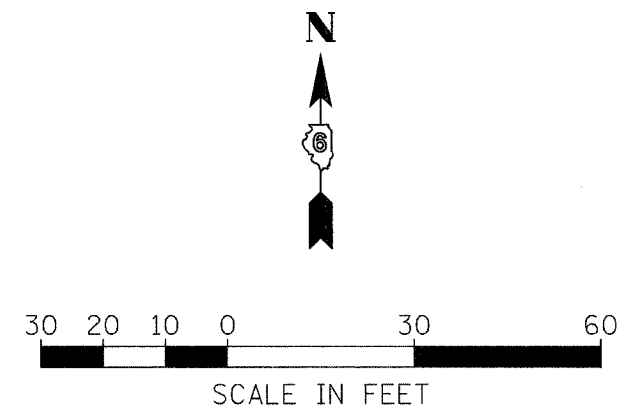
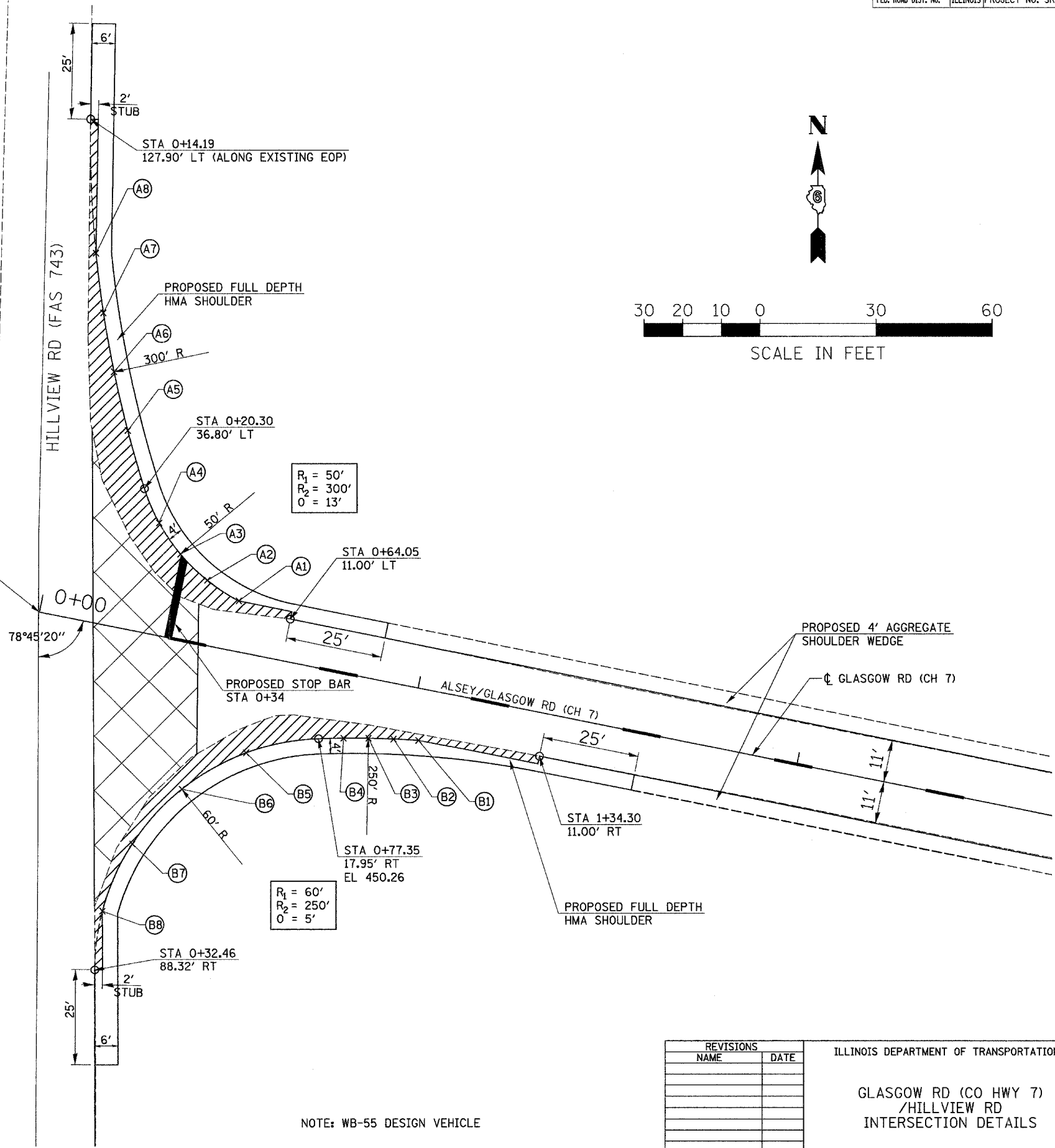


POT STA 0+00.00
N - 1050655.100 E - 2195816.301
MAG NAIL



POT STA 2+00.00
N - 1050615.471 E - 216012.336
MAG NAIL

BENCHMARK:
CHIS 1" ON THE NORTHEAST HEADWALL OF HILLVIEW
ROAD OVER LITTLE SANDY CREEK
ELEV. 454.21



NOTE: WB-55 DESIGN VEHICLE

REVISIONS	
NAME	DATE

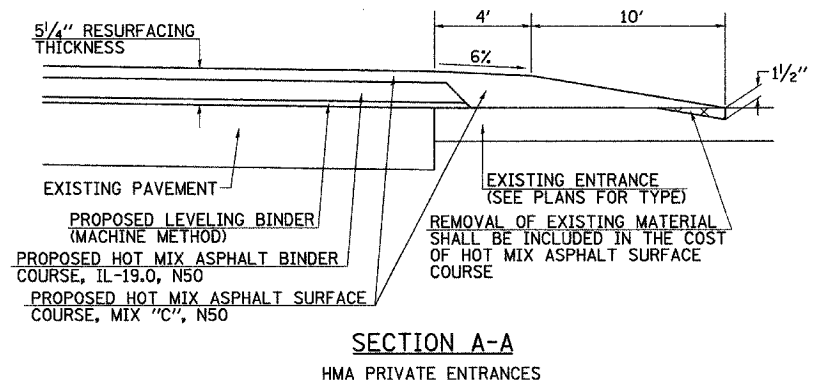
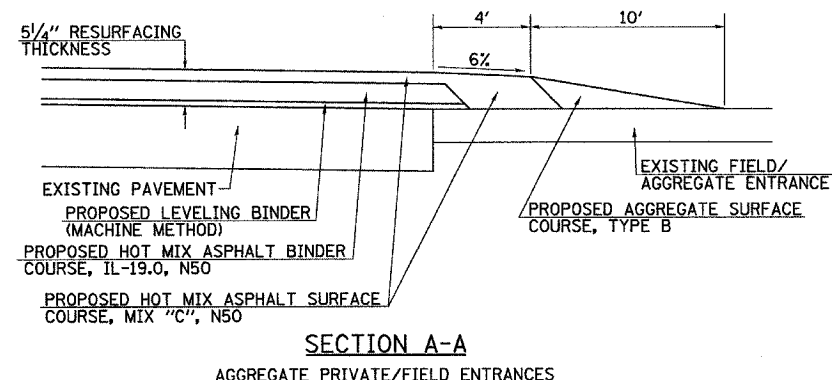
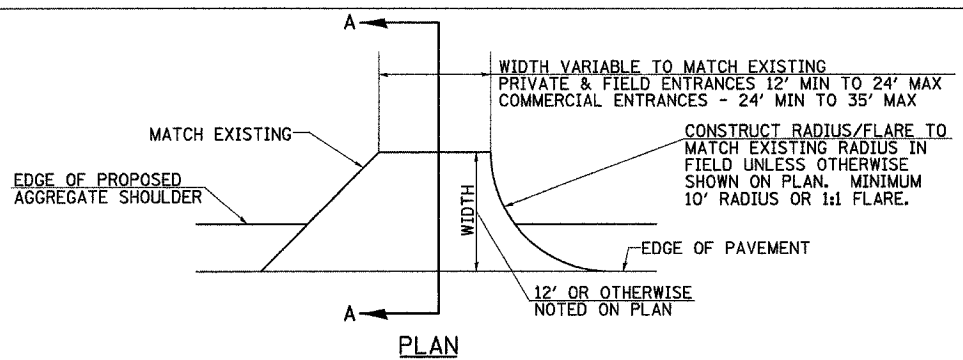
ILLINOIS DEPARTMENT OF TRANSPORTATION

GLASGOW RD (CO HWY 7)
/HILLVIEW RD
INTERSECTION DETAILS

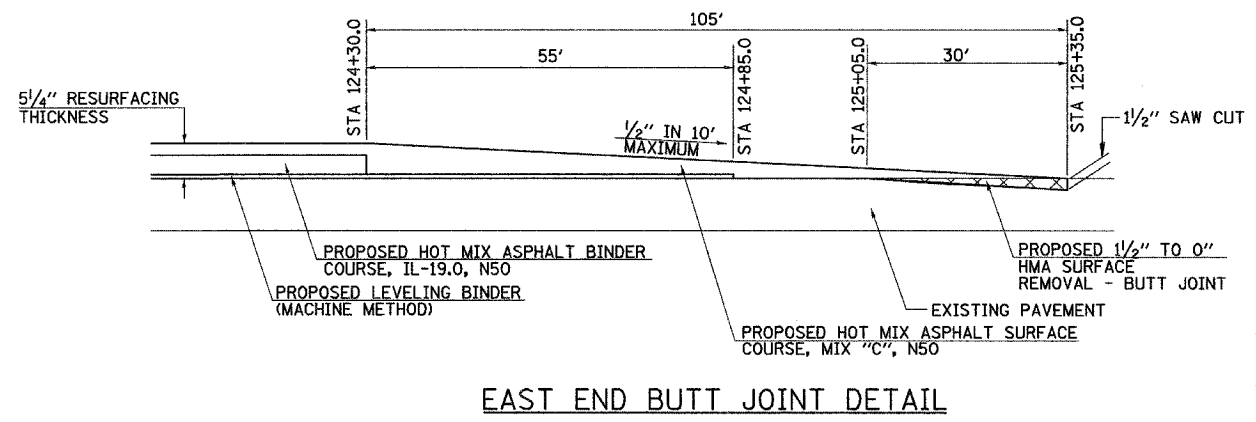
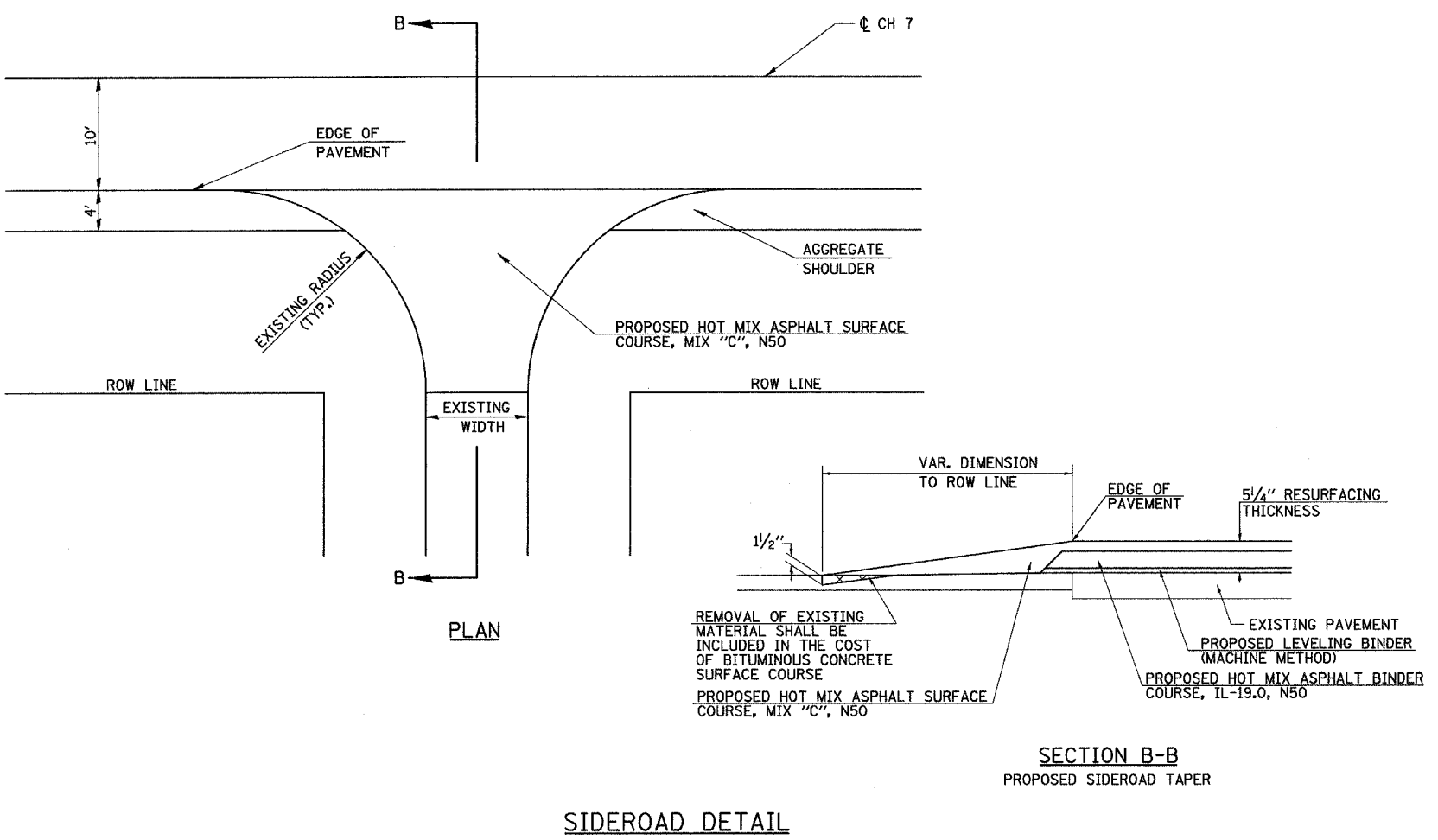
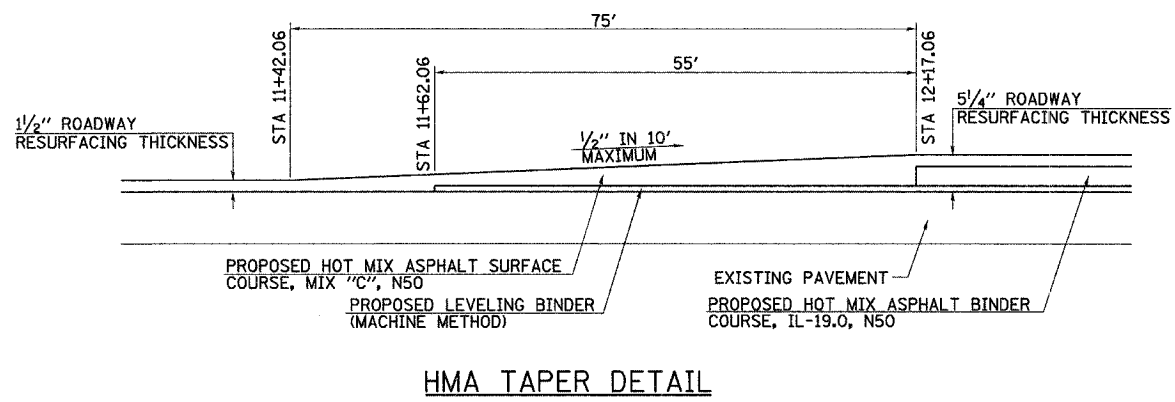
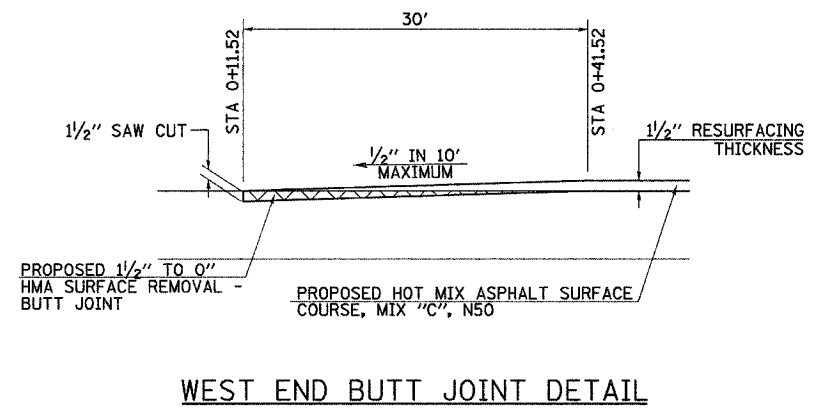
DRAWN BY:
CHECKED BY:

DATE MARCH, 2008

F.A.S. RTE.	SECTION	COUNTY	TOTAL SHEETS	SHEET NO.
608	97-00043-01-FP	SCOTT	11	11
STA.	TO STA.			
FED. ROAD DIST. NO.	ILLINOIS PROJECT NO. SR-0608(111)			



ENTRANCE TAPERS



REVISIONS	
NAME	DATE

ILLINOIS DEPARTMENT OF TRANSPORTATION

COUNTY HIGHWAY 7

SPECIAL DETAILS

SCALE:

DATE: MARCH, 2008

DRAWN BY

CHECKED BY

PLOT DATE = 3/6/2008
 FILE NAME = V:\2430\97-00043-01-FP-2430001.dgn
 PLOT SCALE = 49.9933 / 1 IN.
 USER NAME = bborngman