

T.R. RTE.	SECTION	COUNTY	TOTAL SHEETS	SHEET NO.
34	95-05109-00-BR	MENARD	14	1
FED. ROAD DIST. NO. ILLINOIS FED. AID PROJECT				CONTRACT NO. 93460

INDEX OF SHEETS

- 1 - TITLE SHEET
- 2 - SUMMARY OF QUANTITIES, DETAILS, & TYPICAL SECTIONS
- 3 - SCHEDULES, DETAILS & TYPICAL SECTIONS
- 4 - PLAN & PROFILE
- 5 - GENERAL PLAN & ELEVATION
- 6 - SUPERSTRUCTURE
- 7 - RAILING
- 8-9 - ABUTMENTS
- 10-14 - CROSS SECTIONS

STANDARDS

- STANDARD 515001-02
- STANDARD 665001-01
- STANDARD 701011-01
- STANDARD 701901
- STANDARD BLR 21-7
- STANDARD BLR 23-2
- STANDARD BLR 26
- STANDARD BLR 27

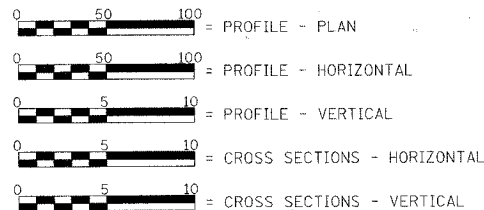
STATE OF ILLINOIS DEPARTMENT OF TRANSPORTATION PLANS FOR PROPOSED HIGHWAY BRIDGE PROGRAM

**T.R. 34 OVER TAR CREEK
SECTION 95-05109-00-BR
PROJECT BROS-129(020)
MENARD COUNTY / ROAD DISTRICT NO. 5
C - 96-228-08**

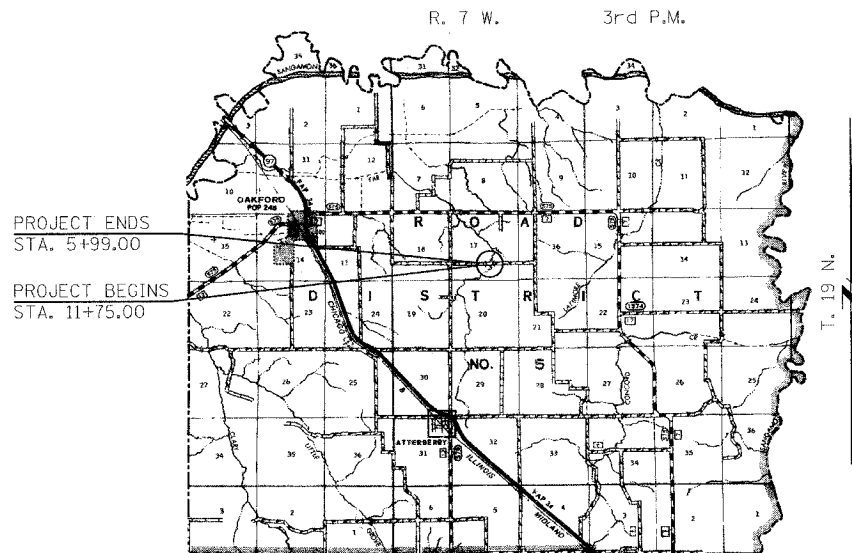
EXISTING STRUCTURE: SINGLE SPAN TIMBER DECK BRIDGE ON STEEL STRINGERS WITH ONE CLOSED TIMBER ABUTMENT AND ONE CLOSED CONCRETE ABUTMENT. ±26'-6" BK.-BK. ABUTMENTS, ±18'-0" OUT-OUT DECK, STEEL CHANNEL RAIL, 0° SKEW. EXISTING STRUCTURE NO. 065-3039

PROPOSED STRUCTURE: SINGLE SPAN PRECAST CONCRETE DECK BEAM (17") BRIDGE ON CLOSED CONCRETE ABUTMENTS. 28'-0" OUT. TO OUT. DECK, 40'-0" BK. TO BK. ABUTMENTS. STEEL RAILING TYPE S-1. 0° SKEW. PROPOSED STRUCTURE NO. 065-3121.

SCALE IN FEET

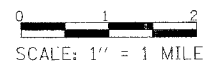


LAND SECTION - 17
 LAND QUARTER SECTION - S.E.
 FUNCTIONAL CLASSIFICATION: LOCAL ROAD (NON-URBAN)
 A.D.T. - 50 (2004)
 A.D.T. - 30 (2020)
 30 M.P.H. DESIGN SPEED



LOCATION PLAN

LENGTH OF SECTION - 576.00 FEET = 0.109 MILES



Christopher P. Kohnen 3/10/08
 EXPIRATION: 11/30/2009

APPROVED March 10, 2008
Thomas R. Casson
 COUNTY ENGINEER

PASSED APRIL 2, 2008
Jim L...
 DISTRICT SIX ENGINEER OF LOCAL ROADS & STREETS

PASSED April 2, 2008
LRG
 DISTRICT SIX ENGINEER OF LOCAL ROADS & STREETS
 DISTRICT SIX CONSTRUCTION ENGINEER

Releasing For Bid Based on Limited Review APRIL 2, 2008
Christine M. Reed
 DEPUTY DIRECTOR OF HIGHWAYS, REGION FOUR ENGINEER

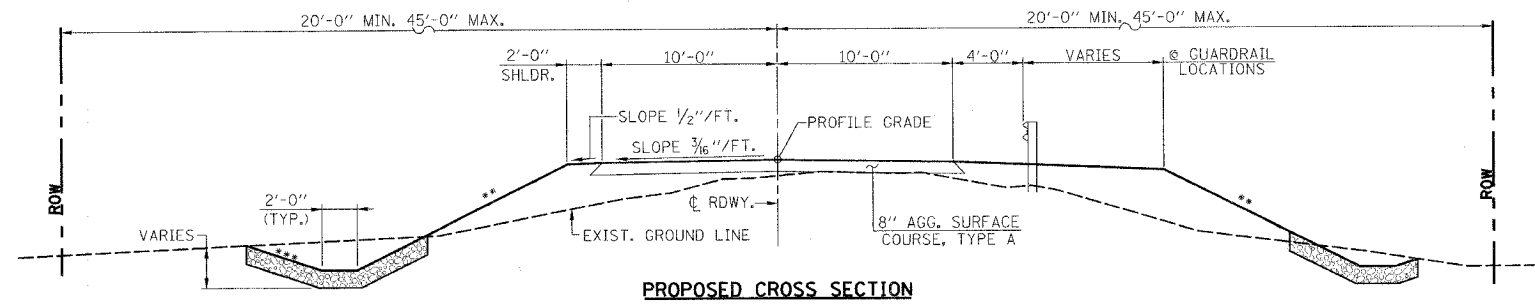
STATE OF ILLINOIS
 DEPARTMENT OF TRANSPORTATION

TOLL FREE
 "JOINT UTILITY LOCATION INFORMATION FOR EXCAVATORS"
 (CALL I.E.) TELEPHONE NUMBER
 1-800-892-0123

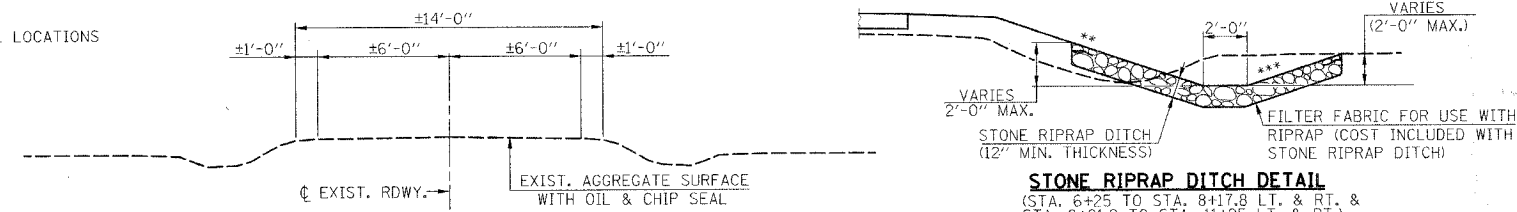
CONTRACT NO. 93460

FILE NAME = #FILEL6	USER NAME = #USER#	DESIGNED -	REVISED -	Allen Henderson & Associates, Inc. Civil and Structural Engineers Springfield, IL 62703 Phone: (217)544-8033 IL Design Firm No. 184-001907	TITLE SHEET	T.R. RTE.	SECTION	COUNTY	TOTAL SHEETS	SHEET NO.
	PLOT SCALE = #SCALE#	DRAWN -	REVISED -			34	95-05109-00-BR	MENARD	14	1
	PLOT DATE = #DATE#	CHECKED -	REVISED -			CONTRACT NO. 93460		FED. ROAD DIST. NO. ILLINOIS FED. AID PROJECT		

SCALE: 1" = 1 MILE SHEET NO. 1 OF 14 SHEETS STA. 5+99.00 TO STA. 11+75.00

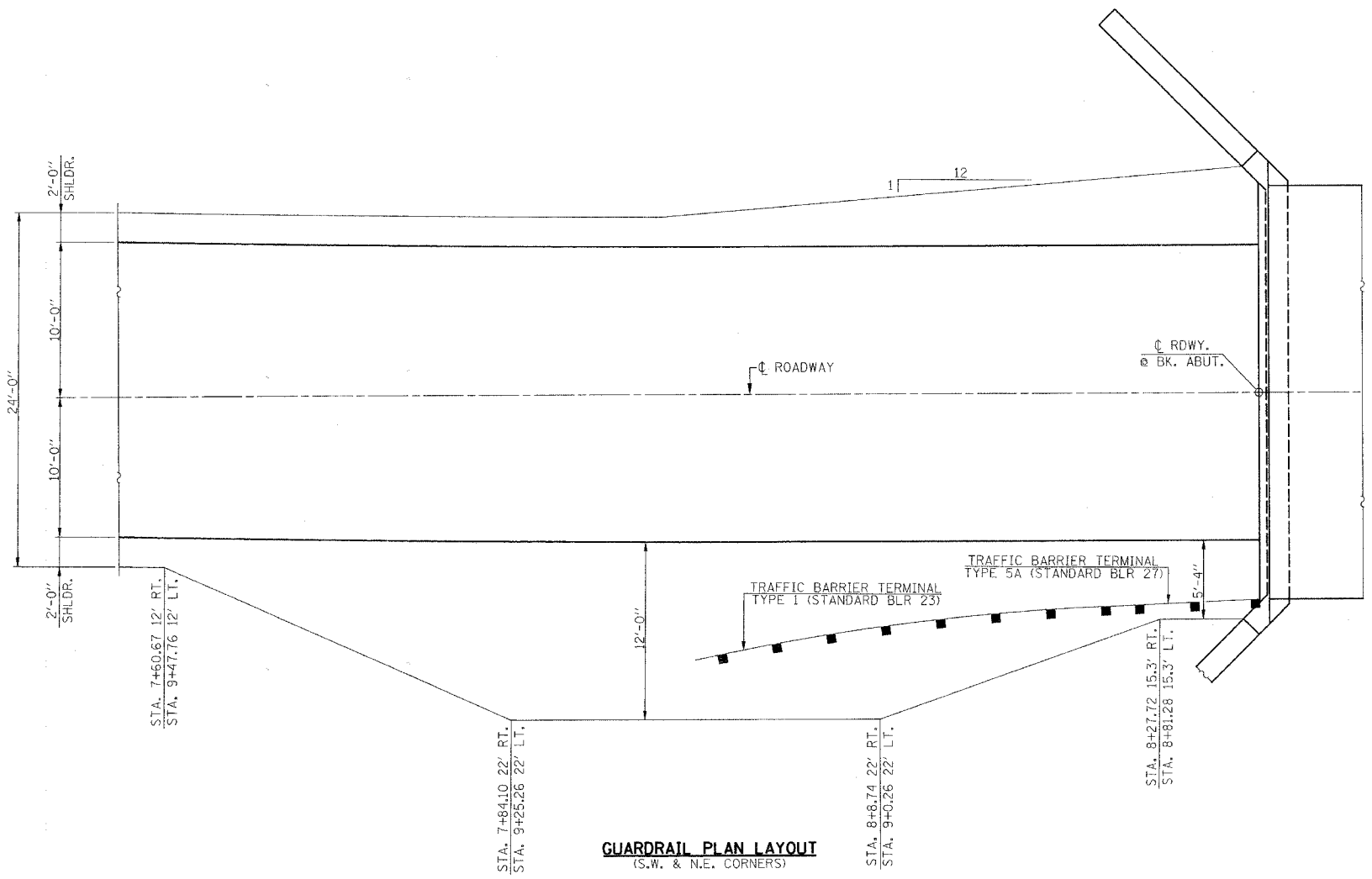


** 3:1 < 6'
 2:1 > 6' OR AT GUARDRAIL LOCATIONS
 ** 3:1 < 10'
 2:1 > 10'



STONE RIPRAP DITCH DETAIL
 (STA. 8+25 TO STA. 8+17.8 LT. & RT. & STA. 8+31.2 TO STA. 11+25 LT. & RT.)

EXISTING CROSS SECTION



GUARDRAIL PLAN LAYOUT
 (S.W. & N.E. CORNERS)

SUMMARY OF QUANTITIES

ITEM	UNIT	QUANTITY
20100110	TREE REMOVAL (6 TO 15 UNITS DIAMETER)	UNIT 12
20200100	EARTH EXCAVATION	CU. YD. 857
20300100	CHANNEL EXCAVATION	CU. YD. 156
25001000	SEEDING, CLASS 2 (SPECIAL)	ACRE 0.8
28100807	STONE DUMPED RIPRAP, CLASS A4	TON 482
28102600	STONE RIPRAP DITCH	TON 521
28200200	FILTER FABRIC	SO. YD. 642
40200100	AGGREGATE SURFACE COURSE, TYPE A	TON 571
50100100	REMOVAL OF EXISTING STRUCTURES	EACH 1
50200100	STRUCTURE EXCAVATION	CU. YD. 351
50300225	CONCRETE STRUCTURES	CU. YD. 132.1
50400305	PRECAST PRESTRESSED CONCRETE DECK BEAMS (17" DEPTH)	SO. FT. 1083
50800105	REINFORCEMENT BARS	POUND 1810
50900205	STEEL RAILING, TYPE S-1	FOOT 80
51201400	FURNISHING STEEL PILES HP 10X42	FOOT 576
51202305	DRIVING PILES	FOOT 576
51203400	TEST PILE STEEL HP 10X42	EACH 2
51500100	NAME PLATES	EACH 1
54200223	PIPE CULVERTS, CLASS D, TYPE 1 18"	FOOT 92
63100075	TRAFFIC BARRIER TERMINAL, TYPE 5A	EACH 2
66502200	WOVEN WIRE FENCE (SPECIAL)	FOOT 1560
67100100	MOBILIZATION	L. SUM 1
70101700	TRAFFIC CONTROL AND PROTECTION	L. SUM 1
78201000	TERMINAL MARKER - DIRECT APPLIED	EACH 4
LR631020	TRAFFIC BARRIER TERMINAL TYPE 1	EACH 2
X0322941	FURNISHING AND INSTALLING STEEL GATE ASSEMBLY	EACH 2
X5020501	UNDERWATER STRUCTURE EXCAVATION PROTECTION - LOCATION 1	EACH 1
X5020502	UNDERWATER STRUCTURE EXCAVATION PROTECTION - LOCATION 2	EACH 1
Z0022800	FENCE REMOVAL	FOOT 1095

* SEE SPECIAL PROVISIONS
 Δ SPECIALTY ITEMS

CONSTRUCTION TYPE CODE: X080-2A

GENERAL NOTES

WHERE SECTION OR SUBSECTION STONES ARE ENCOUNTERED, THE ENGINEER SHALL BE NOTIFIED BEFORE SUCH STONES ARE REMOVED. THE CONTRACTOR SHALL PROTECT AND PRESERVE ALL PROPERTY MARKERS AND MONUMENTS UNTIL THE OWNER, AUTHORIZED SURVEYOR, OR AGENT HAS WITNESSED OR REFERENCED THEIR LOCATION.
 SEEDING: FERTILIZER NUTRIENTS SHALL BE APPLIED AT A RATIO OF 1:1:1 AND AT A RATE OF 90 POUNDS PER ACRE FOR EACH NUTRIENT.
 MULCH SHALL BE APPLIED AT THE RATE OF 2 TONS PER ACRE.
 AREAS TO BE SEEDDED SHALL CONSIST OF ALL DISTURBED EARTH SURFACES WITHIN THE RIGHT OF WAY AS DIRECTED BY THE ENGINEER.
 NO COMMITMENTS.

EARTHWORK SCHEDULE

LOCATION	EARTH EXCAVATION	EARTH EXCAVATION ADJUSTED FOR SHRINKAGE	EMBANKMENT	EARTHWORK BALANCE WASTE (+) OR SHORTAGE (-)
	CU. YD.	CU. YD.	CU. YD.	CU. YD.
STA. 5+99 TO STA. 6+50	26	20	3	+17
STA. 6+50 TO STA. 7+00	65	49	4	+45
STA. 7+00 TO STA. 7+50	72	54	11	+43
STA. 7+50 TO STA. 8+00	46	35	88	-54
STA. 8+00 TO STA. 8+34.50	28	21	75	-54
BRIDGE OMISSION - STA. 8+34.50 TO STA. 8+74.50	-	-	-	-
STA. 8+74.50 TO STA. 9+00	20	15	150	-135
STA. 9+00 TO STA. 9+50	35	26	207	-181
STA. 9+50 TO STA. 10+00	28	21	89	-68
STA. 10+00 TO STA. 10+50	70	53	32	+21
STA. 10+50 TO STA. 11+00	181	136	8	+128
STA. 11+00 TO STA. 11+50	231	173	6	+167
STA. 11+50 TO STA. 11+75	55	41	0	+41
TOTAL	857	643	673	-30 *

* NOTE: EXCESS STRUCTURE EXCAVATION OF 30 CU. YDS. WILL BE USED. NO FURNISHED EXCAVATION WILL BE REQUIRED. THE COST OF DISPOSING EXCESS CHANNEL OR STRUCTURE EXCAVATION SHALL BE INCLUDED IN THE CONTRACT UNIT PRICE FOR EARTH EXCAVATION.

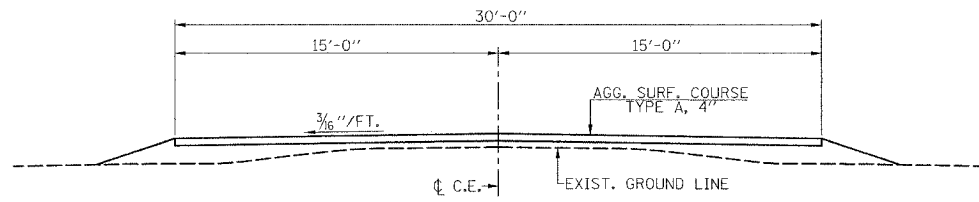
FILE NAME #	USER NAME #	DESIGNED	REVISED
#111111	#UCER#	---	---
PLOT SCALE #	DRAWN	---	---
#SCALE#	---	---	---
PLOT DATE #	CHECKED	---	---
#DATE#	---	---	---
	DATE	---	---
	---	---	---

Allen Henderson & Associates, Inc.
 Civil and Structural Engineers Springfield, IL
 62703 Phone: (217)544-8033 IL Design Firm
 No. 184-001907

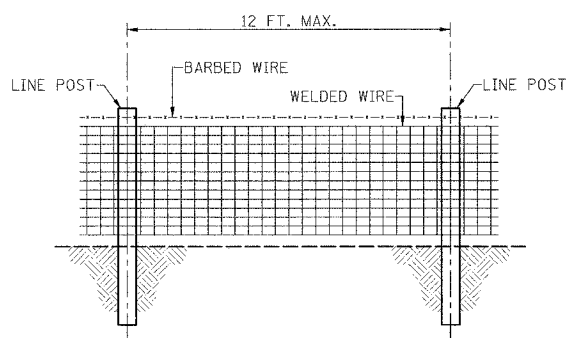
SUMMARY OF QUANTITIES, DETAILS & TYPICAL SECTIONS

SCALE: NONE SHEET NO. 2 OF 14 SHEETS STA. 5+99.00 TO STA. 11+75.00

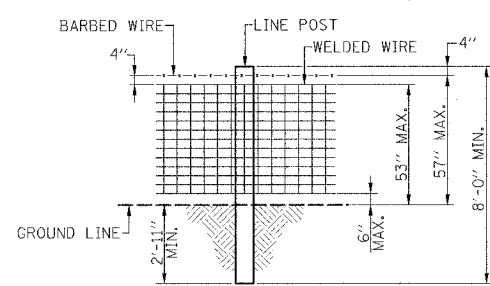
T.R. RTE.	SECTION	COUNTY	TOTAL SHEETS	SHEET NO.
34	95-05109-00-BR	MENARD	14	3
FED. ROAD DIST. NO. - ILLINOIS FED. AID PROJECT			CONTRACT NO. 93460	



CROSS SECTION
(COMMERCIAL ENTRANCE)
STA. 7+25 RT. & STA. 7+75 LT.



LINE PANEL

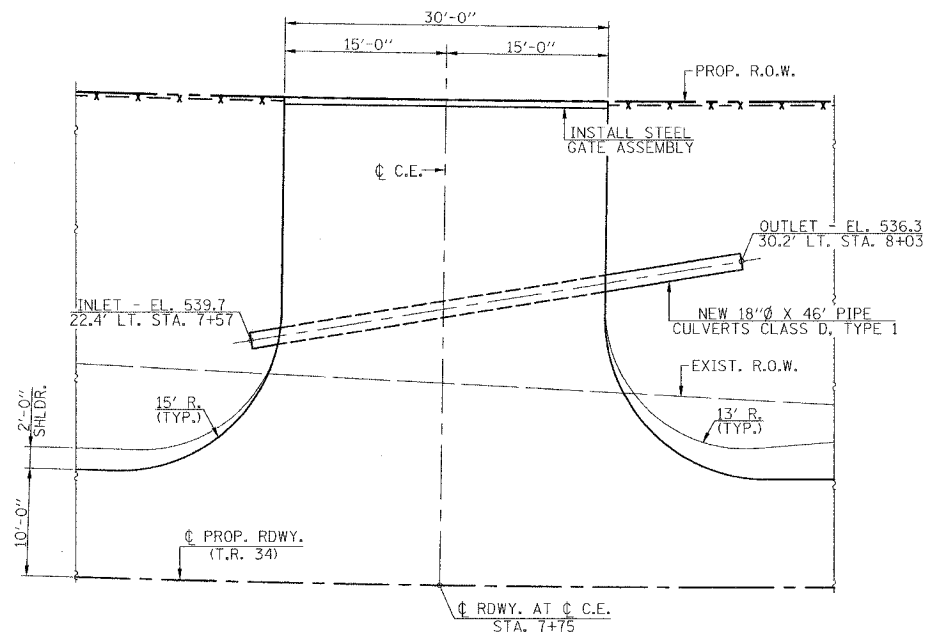


WOVEN WIRE WITH ONE BARB DETAIL

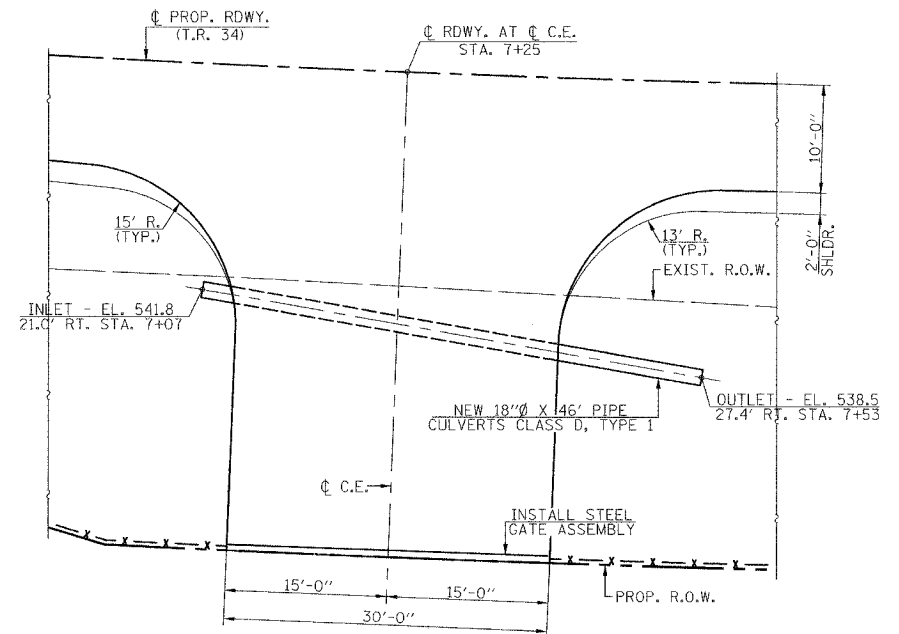
WOVEN WIRE
ASTM CLASS 3 GALVANIZED.
TOP & BOTTOM WIRES MIN. 9 GAUGE
INTERMEDIATE AND STAY WIRES MIN. 11 GAUGE

CORNER, END & BRACE POSTS (WOODEN): MIN. 8" - 10" DIA.
OR (8 X 8) 8" SQUARE
LINE POSTS (WOODEN) MIN. 5" - 6" DIA. OR (6 X 6) 6" SQUARE
SPECIES AND TREATMENT FOR ALL WOOD: USE UNTREATED DURABLE POSTS OF SPECIES OSAGE-ORANGE WITH BARK REMOVED.

NOTE: WORK WOVEN WIRE FENCE (SPECIAL) DETAILS WITH HIGHWAY STANDARD 665001.



PLAN
(C.E. STA. 7+75 LT.)



PLAN
(C.E. STA. 7+25 RT.)

SCHEDULE FENCE REMOVAL

LOCATION	QUANTITY (FOOT)
STA. 8+08, 40' RT. TO STA. 8+37, 19' RT.	50
STA. 8+73, 24' RT. TO STA. 12+78, 20' RT.	404
STA. 5+69, 27' LT. TO STA. 8+29, 17' LT.	245
STA. 8+62, 10' LT. TO STA. 12+78, 30' LT.	396
TOTAL	1095

SCHEDULE WOVEN WIRE FENCE (SPECIAL)

LOCATION	QUANTITY (FOOT)
STA. 3+60, 20' RT. TO STA. 8+23.8, 24.7' RT. (WINGWALL)	453
STA. 8+85.2, 24.7' RT. (WINGWALL) TO STA. 12+78, 20' RT.	433
STA. 5+69, 20' LT. TO STA. 8+23.8, 24.7' LT. (WINGWALL)	241
STA. 8+85.2, 24.7' RT. (WINGWALL) TO STA. 12+78, 20' LT.	433
TOTAL	1560

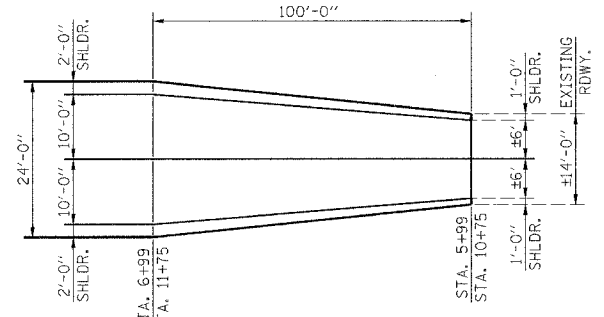
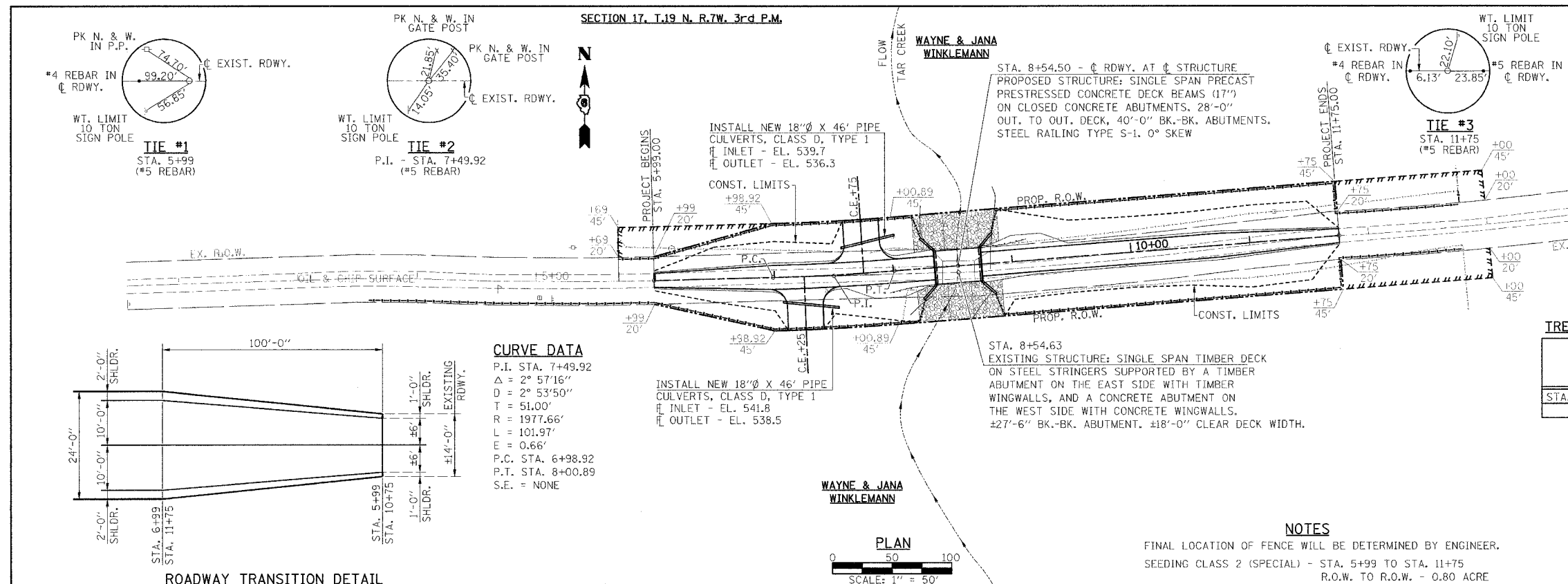
FILE NAME =	USER NAME = #USER#	DESIGNED -	REVISED -
#FILE#		DRAWN -	REVISED -
	PLOT SCALE = #SCALE#	CHECKED -	REVISED -
	PLOT DATE = #DATE#	DATE -	REVISED -

Allen Henderson & Associates, Inc.
Civil and Structural Engineers Springfield, IL.
62703 Phone: (217)544-8033 IL Design Firm
No. 184-001907

SCHEDULES, DETAILS & TYPICAL SECTIONS
SCALE: NONE SHEET NO. 3 OF 14 SHEETS STA. 5+99.00 TO STA. 11+75.00

T.R. RTE.	SECTION	COUNTY	TOTAL SHEETS	SHEET NO.
34	95-05109-00-BR	MENARD	14	3
FED. ROAD DIST. NO. - ILLINOIS FED. AID PROJECT			CONTRACT NO. _____	

T.R. RTE.	SECTION	COUNTY	TOTAL SHEETS	SHEET NO.
34	95-05109-00-BR	MENARD	14	4
CONTRACT NO. 93460				
FED. ROAD DIST. NO. ILLINOIS FED. AID PROJECT				



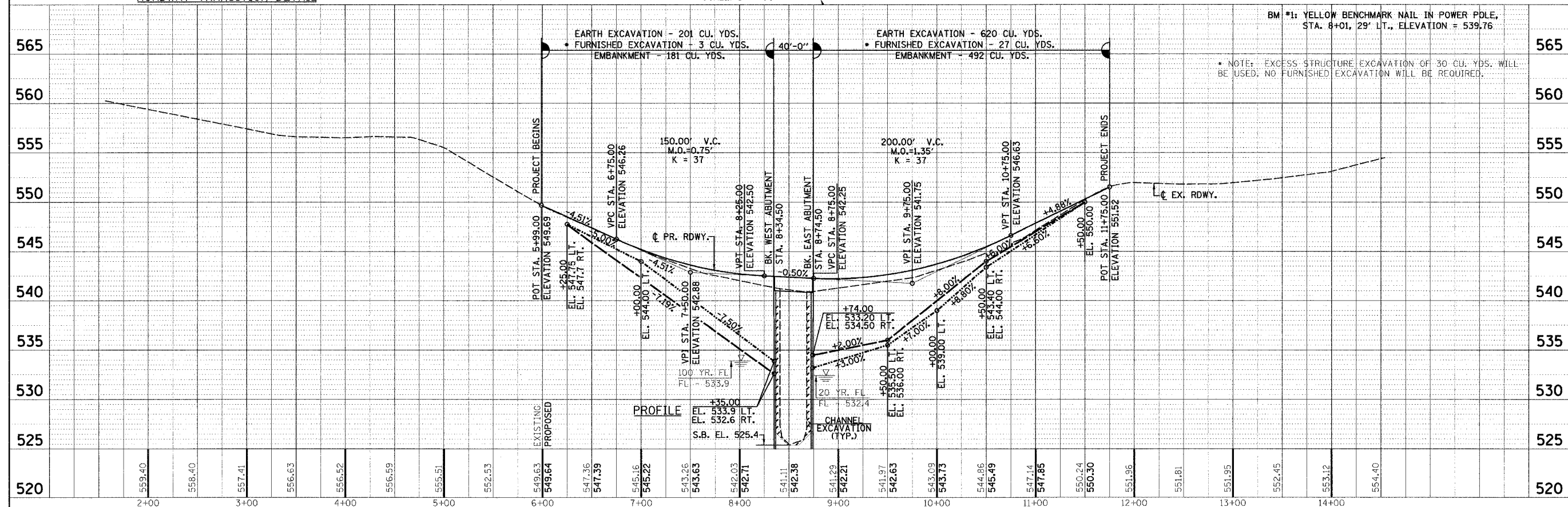
CURVE DATA
 P.I. STA. 7+49.92
 $\Delta = 2^\circ 57'16''$
 $D = 2^\circ 53'50''$
 $T = 51.00'$
 $R = 1977.66'$
 $L = 101.97'$
 $E = 0.66'$
 P.C. STA. 6+98.92
 P.T. STA. 8+00.89
 S.E. = NONE

SCHEDULE TREE REMOVAL (6 TO 15 UNITS DIAMETER)

LOCATION	QUANTITY (UNITS)
STA. 8+20 19' RT.	12
Total	12

UTILITIES
 AT&T
 1-888-611-4466
 Menard Electric Cooperative
 P.O. Box 100
 Petersburg, Illinois 62675
 1-217-632-7746

NOTES
 FINAL LOCATION OF FENCE WILL BE DETERMINED BY ENGINEER.
 SEEDING CLASS 2 (SPECIAL) - STA. 5+99 TO STA. 11+75
 R.O.W. TO R.O.W. - 0.80 ACRE

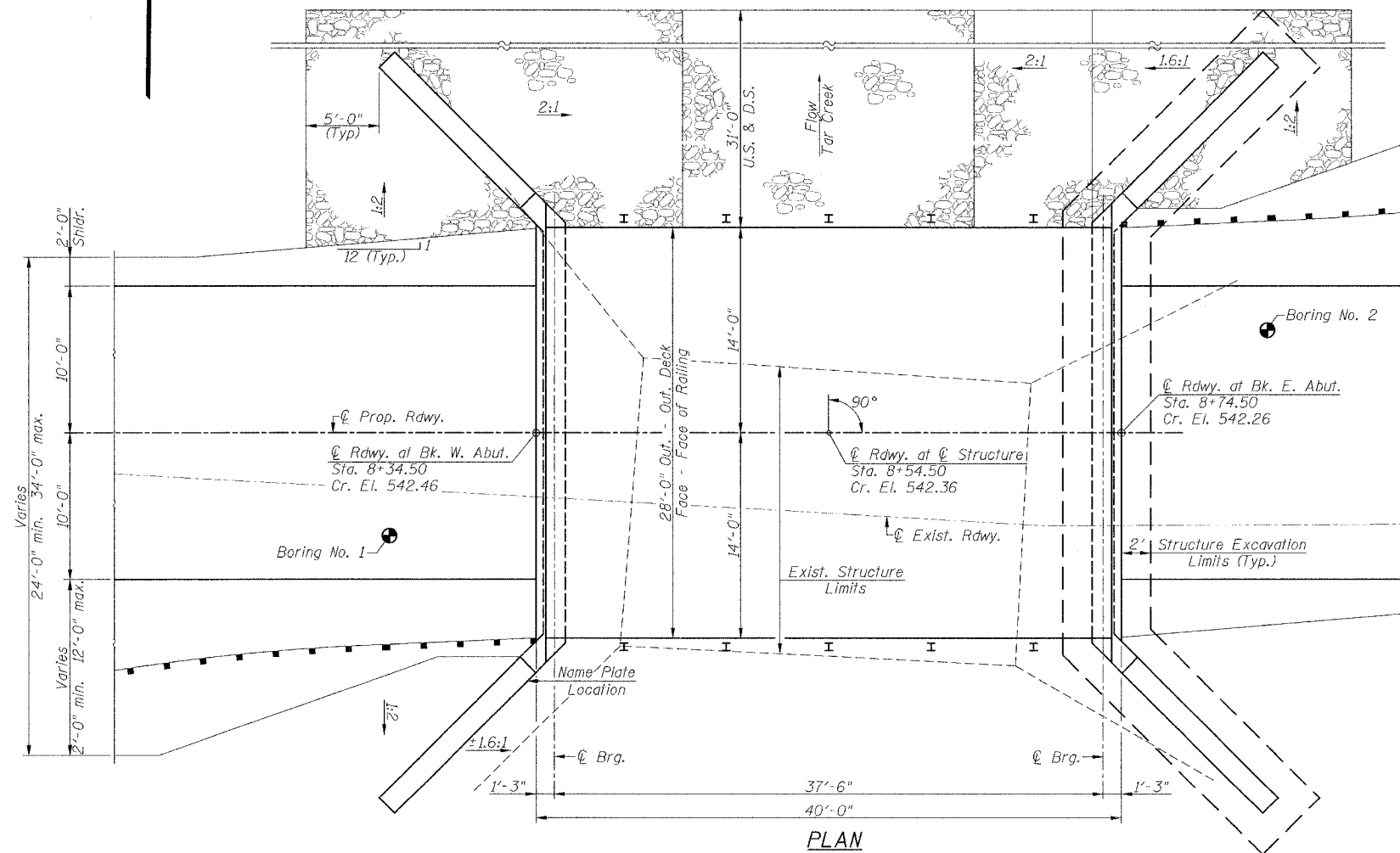
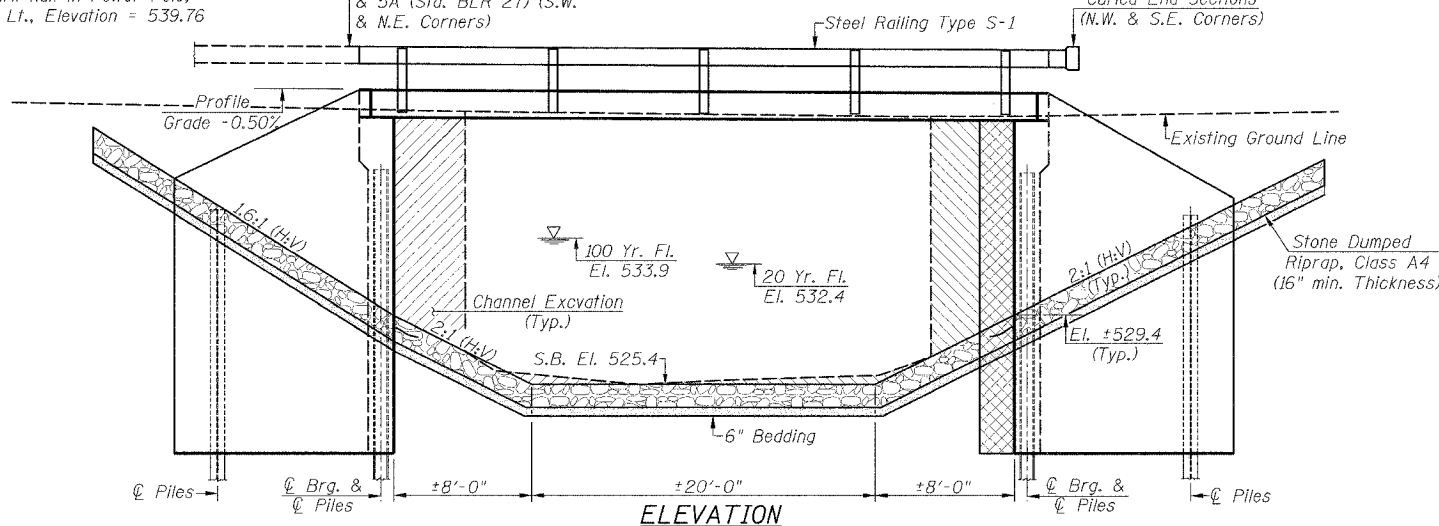


FILE NAME =	USER NAME = #USER#	DESIGNED	REVISOR	Allen Henderson & Associates, Inc. Civil and Structural Engineers Springfield, IL 62703 Phone: (217)544-8033 IL Design Firm No. 184-001907	SECTION	COUNTY	TOTAL SHEETS	SHEET NO.
#FILE#	PLOT SCALE = #SCALE#	CHECKED	REVISOR	ROADWAY PLAN & PROFILE	34	MENARD	14	4
PLOT DATE = #DATE#	CHECKED	REVISOR	REVISOR	SCALE: 1" = 50'	CONTRACT NO.		ILLINOIS FED. AID PROJECT	

Existing Structure: Single Span Timber Deck on Steel Stringers Supported by a Timber Abutment on the East Side with Timber Wingwalls, and a Concrete Abutment on the West Side with Concrete Wingwalls. ± 26'-6" Bk.-Bk. Abutments, ± 18'-0" Clear Deck Width ± 23.5 Cu. Yds. Concrete, ± 7750 lbs. Structural Steel To Be Removed.
 Benchmark: Yellow Benchmark Nail in Power Pole, Sta. 8+01, 29' Lt., Elevation = 539.76

Traffic Barrier Terminal Types 1 (Standard BLR 23) & 5A (Std. BLR 27) (S.W. & N.E. Corners)

Curled End Sections (N.W. & S.E. Corners)



T.R. RTE.	SECTION	COUNTY	TOTAL SHEETS	SHEET NO.
34	95-05109-00-BR	MENARD	14	5
FED. ROAD DIST. NO. 065-3121 ILLINOIS FED. AID PROJECT				CONTRACT NO. 93460

TOTAL BILL OF MATERIAL

ITEM	UNIT	SUPER	SUB	TOTAL
Channel Excavation	Cu. Yd.			156
Stone Dumped Riprap, Class A4	Ton			482
Filter Fabric	Sq. Yd.			642
Removal of Existing Structures	Each			1
Structure Excavation	Cu. Yd.		351	351
Concrete Structures	Cu. Yd.		132.1	132.1
Precast Prestressed Concrete Deck Beams (17" Depth)	Sq. Ft.	1083		1083
Reinforcement Bars	Pound		18110	18110
Steel Railing, Type S-1	Foot	80		80
Furnishing Steel Piles HP 10x42	Foot		576	576
Driving Piles	Foot		576	576
Test Pile, Steel HP 10x42	Each		2	2
Name Plates	Each		1	1
Underwater Structure Excavation Protection - Location 1	Each		1	1
Underwater Structure Excavation Protection - Location 2	Each		1	1

WATERWAY INFORMATION

Drainage Area = 4.56 Sq. Mi.		Pr. Low Grade Elev. 542.46		Sta. 9+00					
Flood Yr.	Freq. C.F.S.	Opening Sq. Ft. Exist.	Prop.	Natural H.W.E. Exist.	Head - ft. Prop.	Headwater El. Exist.	Prop.		
Design	20	1045	176	220	532.4	0.3	0.0	532.7	532.4
Base	100	1594	217	276	533.9	0.5	0.0	534.4	533.9
Exist. Overtop.	Greater than 500 years								
Prop. Overtop.	Greater than 500 years								
Max. Calc.	500	2141	244	310	534.9	1.0	0.3	535.9	535.2

DESIGN STRESSES

FIELD UNITS

fc = 1400 psi
 vc = 56.2 psi
 fs = 24000 psi
 n = 9

PRECAST PRESTRESSED UNITS

f'c = 5000 psi
 f'ci = 4000 psi
 f's = 270000 psi
 f'si = 201960 psi
 1/2" Strands

GENERAL NOTES

See Proposal for Boring Data.
 Reinforcement bars shall conform to the requirements of ASTM A706, Grade 60. See Special Provision.
 The layout of the riprap slope wall may be varied to suit conditions in the field as determined by the Engineer.
 The contractor shall drive one test pile in a permanent location at each abutment as directed by the Engineer in the field prior to ordering the remainder of piles.

DESIGN SPECIFICATIONS

2002 AASHTO Standard Specifications.

LOADING HS 20-44

Allow 50#/sq. ft. for future wearing surface.

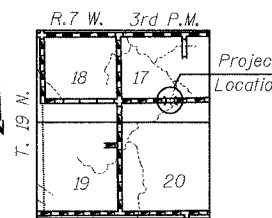
STA. 8+54.50
 BUILT 200 BY
 ROAD DISTRICT NO. 5 &
 MENARD COUNTY
 SECTION 95-05109-00-BR
 STR. NO. 065-3121 LOADING HS 20

NAME PLATE

(Standard 515001)

I certify that to the best of my knowledge, information and belief, this bridge design is structurally adequate for the design loading shown on the plans. The design is an economical one for the style of structure and complies with requirements of the current "A.A.S.H.T.O. Standard Specifications For Highway Bridges".

Allen Henderson 02/10/08
 Expiration Date 11/30/2008



LOCATION PLAN



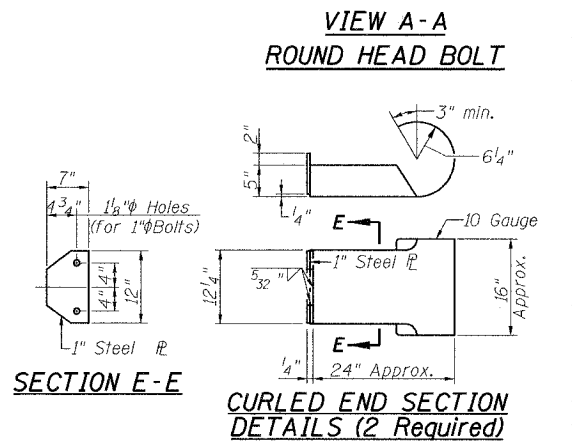
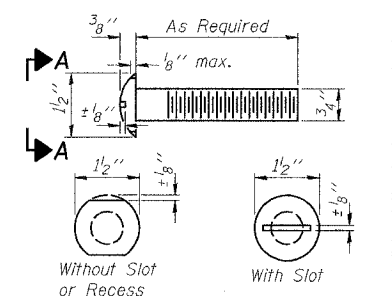
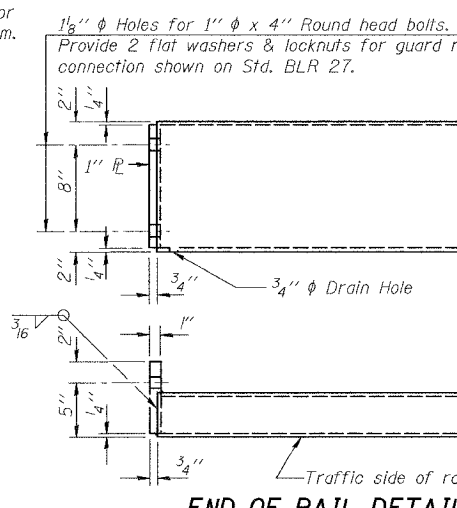
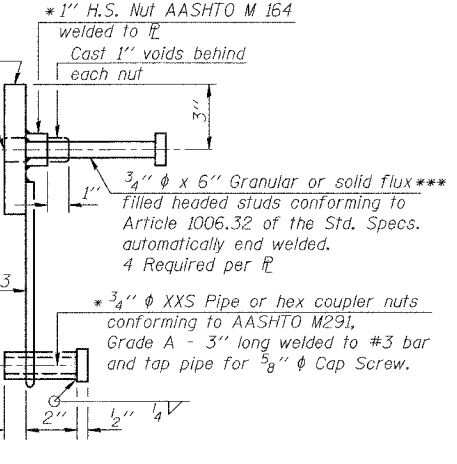
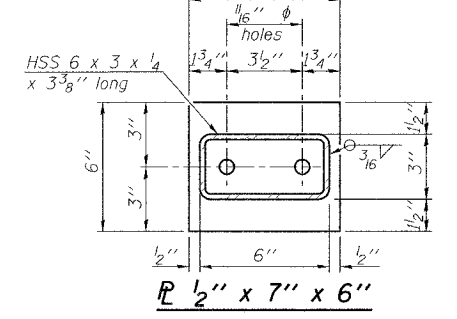
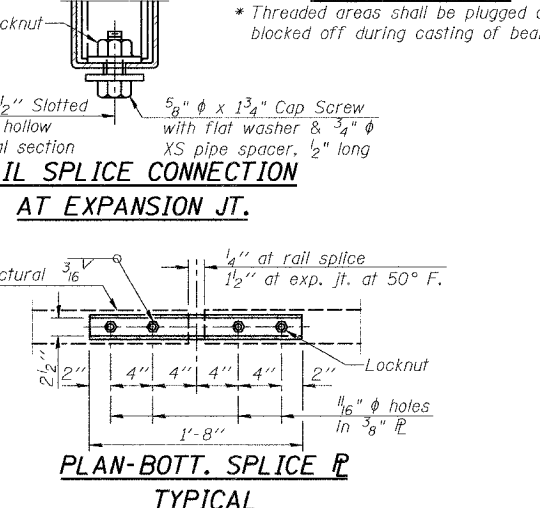
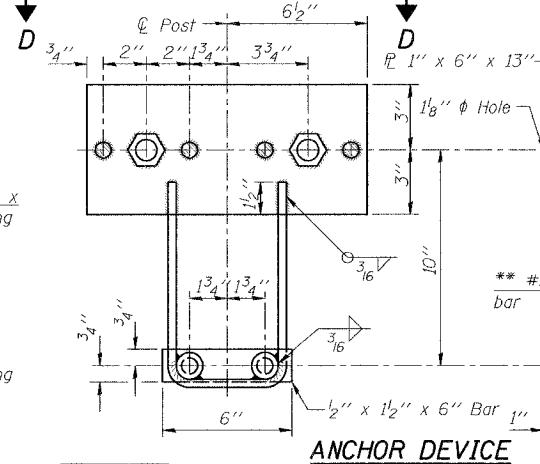
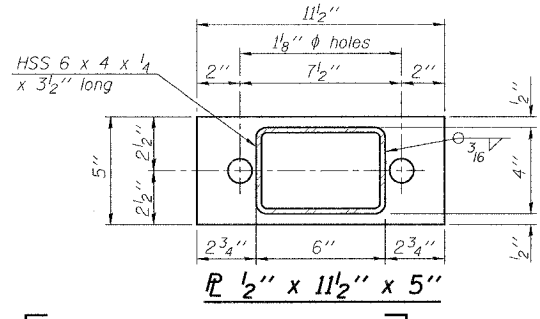
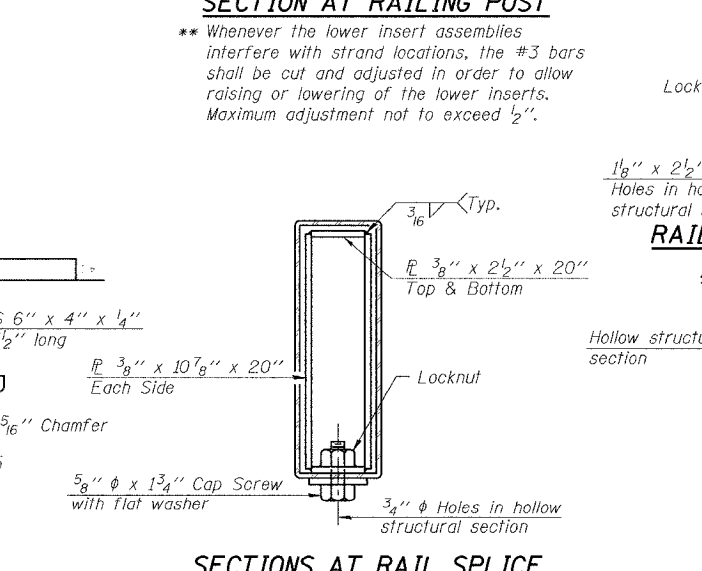
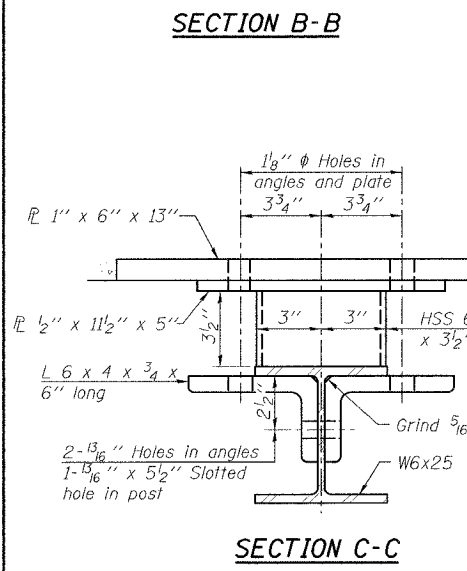
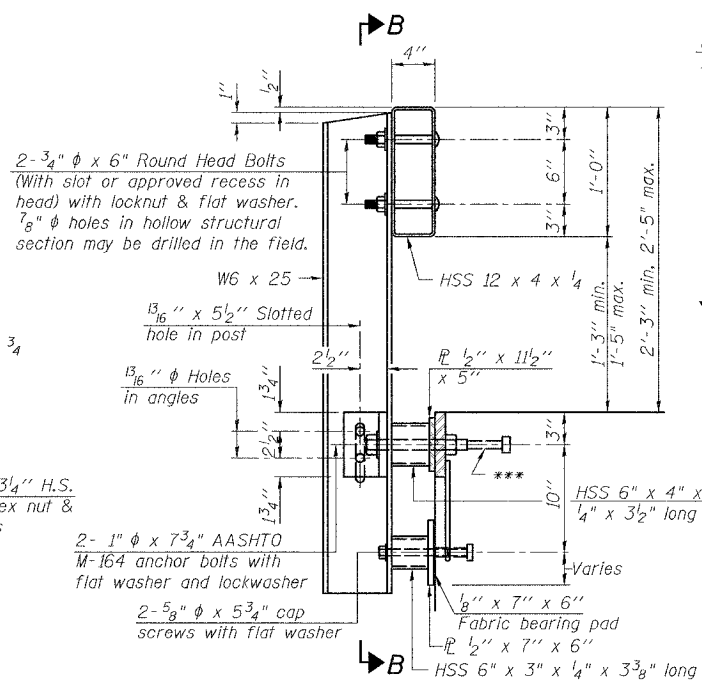
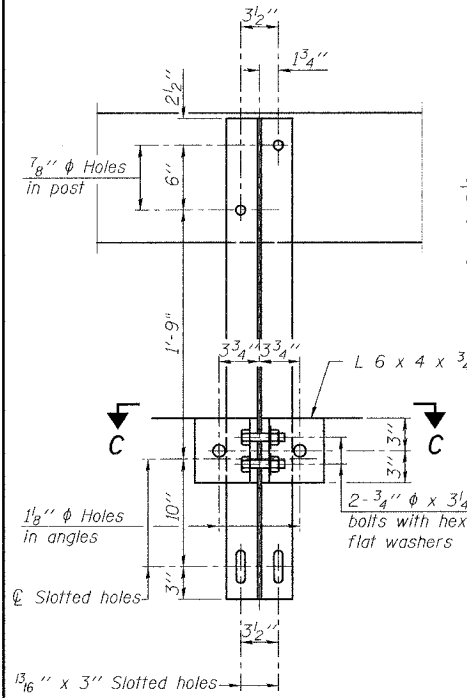
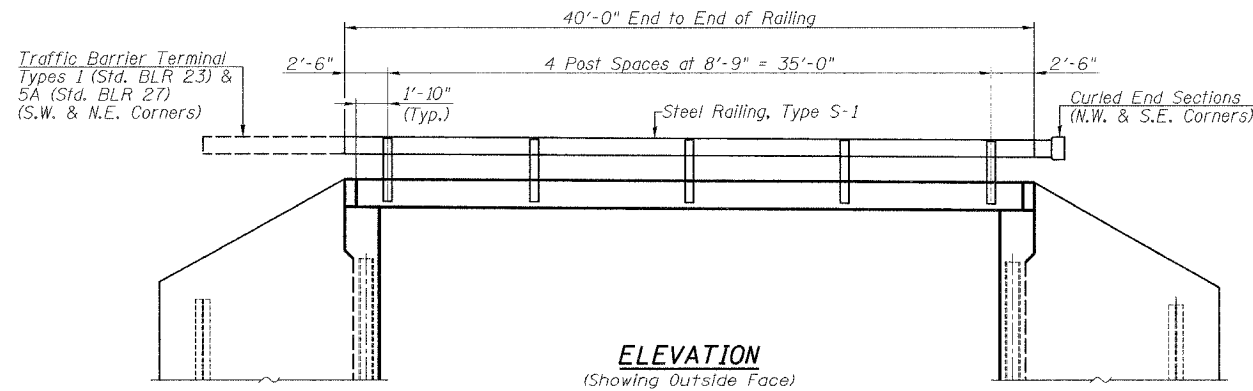
Allen Henderson & Associates, Inc.
 Civil and Structural Engineers Springfield, IL.
 62703 Phone: (217)544-8033 IL Design Firm
 No. 184-001907

GENERAL PLAN & ELEVATION

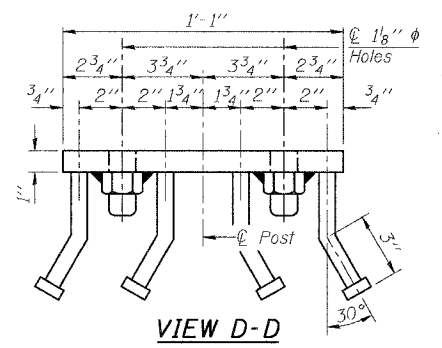
SCALE: 1" = 5' SHEET NO. 5 OF 14 SHEETS STA. 5+99.00 TO STA. 11+75.00

T.R. RTE.	SECTION	COUNTY	TOTAL SHEETS	SHEET NO.
34	95-05109-00-BR	MENARD	14	5
FED. ROAD DIST. NO. 065-3121 ILLINOIS FED. AID PROJECT				CONTRACT NO. 93460

T.R. RTE.	SECTION	COUNTY	TOTAL SHEETS	SHEET NO.
34	95-05109-00-BR	MENARD	14	7
CONTRACT NO. 93-460				
FED. ROAD DIST. NO. [ILLINOIS] FED. AID PROJECT				



Notes:
All field drilled holes shall be coated with an approved zinc rich paint before erection.
For multi-span bridges, sufficient 1/4" x 6" x 1'-2" galvanized steel shims shall be provided to align rail between adjacent spans. Cost included with Steel Railing, Type S-1.
All steel rail elements shall be galvanized according to Article 509.05 of the Standard Specifications.
*** The studs of the anchor devices shall be placed below the top reinforcement bars and the outermost longitudinal reinforcement bar shall be placed directly above the studs of the rail post anchor device.
Railing shall be in accordance with Section 509 of the Standard Specifications, except as noted, and will be paid for at the contract unit price per foot for Steel Railing, Type S-1.
The cost of curled end sections shall be included in the cost of Steel Railing, Type S-1.



Item	Unit	Quantity
Steel Railing, Type S-1	Foot	80

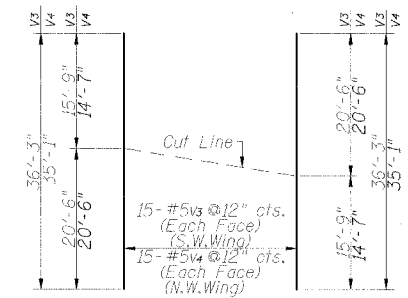
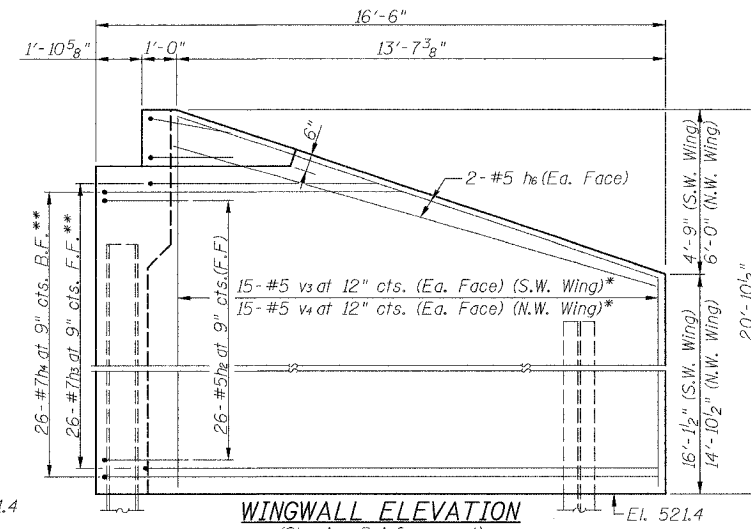
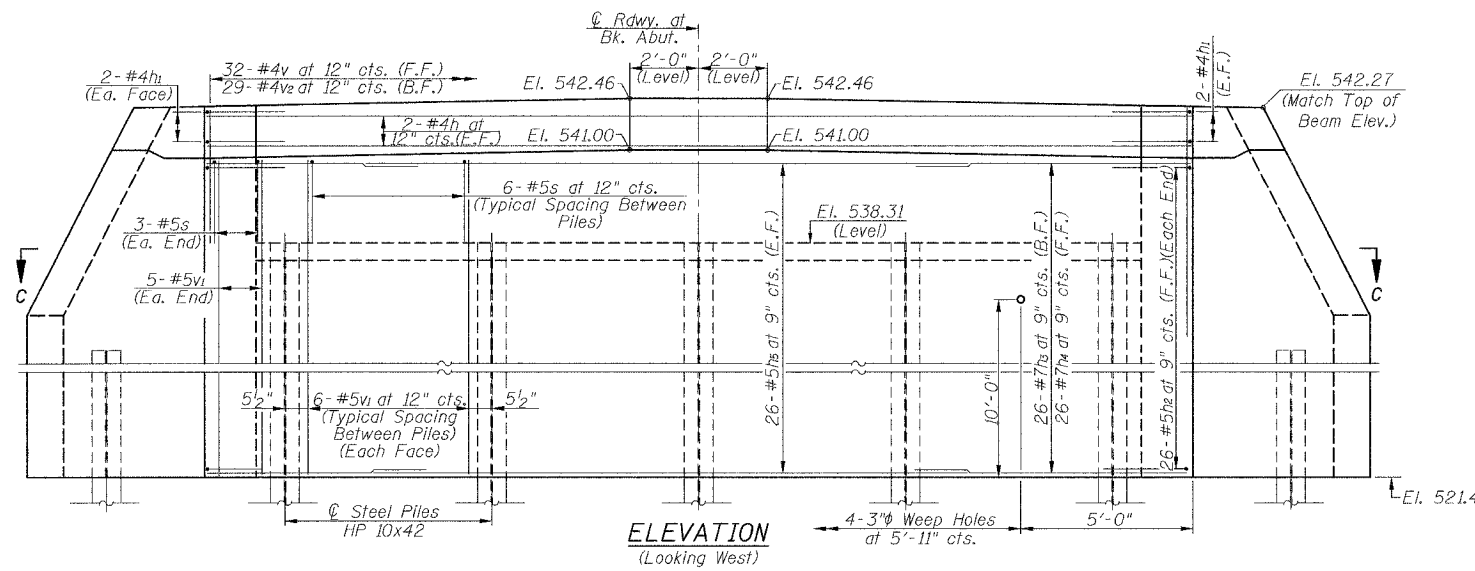
FILE NAME =	USER NAME = USER#	DESIGNED -	REVISD -
7:1:1:1		DRAWN -	REVISD -
	PLOT SCALE = PSCALE#	CHECKED -	REVISD -
	PLOT DEF. = DSCALE#	DATE -	REVISD -

Allen Henderson & Associates, Inc.
Civil and Structural Engineers Springfield, IL
62703 Phone: (217)544-8033 IL Design Firm
No. 184-001907

STEEL RAILING TYPE S-1
SCALE: _____ SHEET NO. 7 OF 14 SHEETS STA. 5+99.00 TO STA. 11+75.00

T.R. RTE.	SECTION	COUNTY	TOTAL SHEETS	SHEET NO.
34	95-05109-00-BR	MENARD	14	7
CONTRACT NO. _____				
FED. ROAD DIST. NO. [ILLINOIS] FED. AID PROJECT				

T.R. RTE.	SECTION	COUNTY	TOTAL SHEETS	SHEET NO.
34	95-05109-00-BR	MENARD	14	8
CONTRACT NO. 9946				
FED. ROAD DIST. NO. ILLINOIS FED. AID PROJECT				



WINGWALL ELEVATION
(Showing Reinforcement)

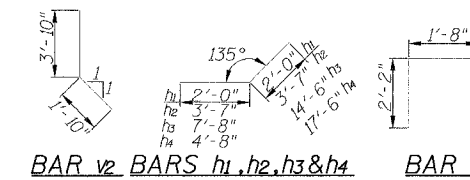
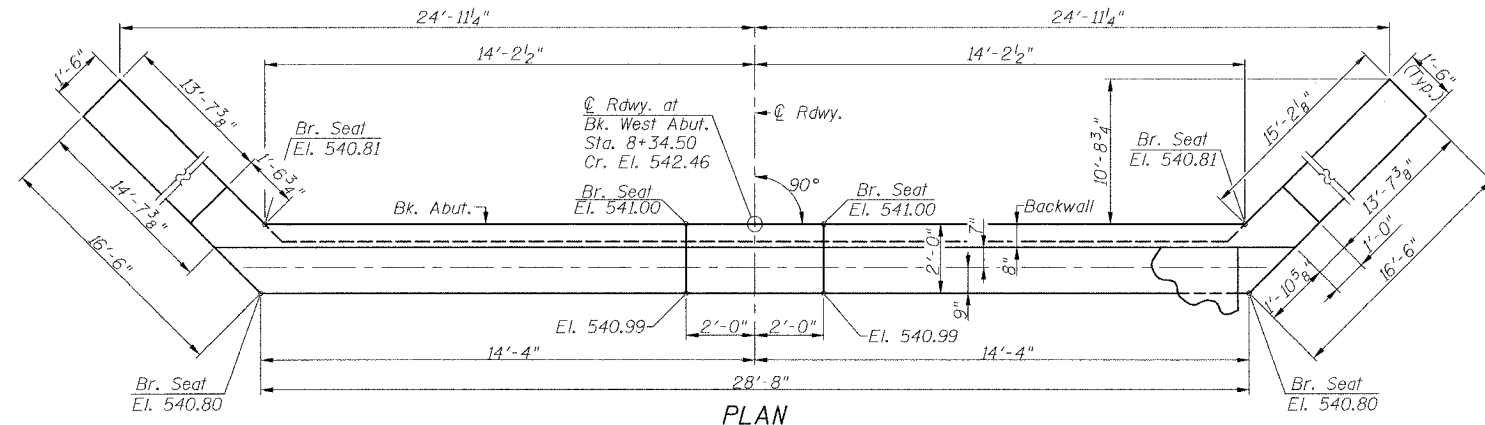
* See v3 and v4 Bar Cut Diagram
** Field Cut as Required

V3 & V4 - BAR CUT DIAGRAM

Note: Order v3 and v4 bars full length. Lay out in field as shown. Cut along cut line. Use remainder of bar in opposite face of wingwall.

NOTES

All exposed edges shall have standard 3/4\"/>



PILE DATA

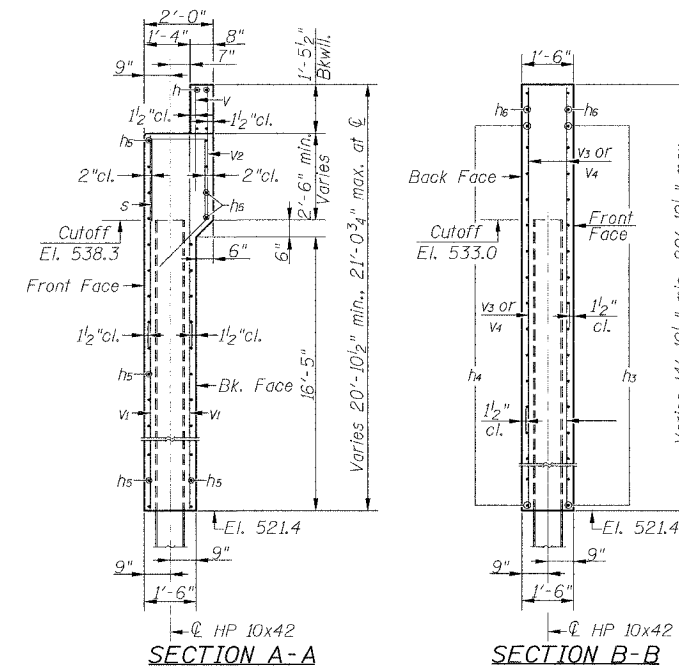
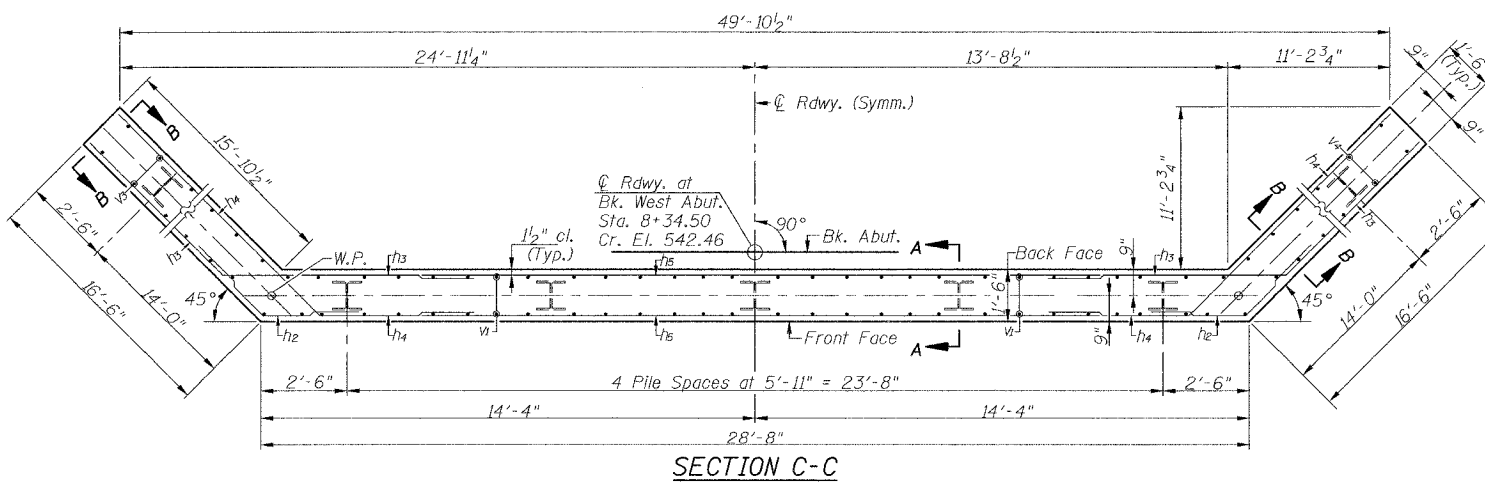
Type: Steel HP 10x42
Nominal Required Bearing: 300 kips
Allowable Resistance Available: 100 kips
Est. Length: 48'
No. of Production Piles: 6
No. of Test Piles: 1

The test pile shall be driven to 110 percent of the Nominal Required Bearing indicated in the pile data information.

The Steel H-Piles shall be according to AASHTO M270 Grade 50.

BILL OF MATERIAL
WEST ABUTMENT

BAR	NO.	SIZE	LENGTH	SHAPE	
h	4	#4	31'-8"	—	
h1	8	#4	4'-0"	—	
h2	52	#5	7'-2"	—	
h3	52	#7	22'-2"	—	
h4	52	#7	22'-2"	—	
h5	52	#5	20'-6"	—	
h6	8	#5	14'-1"	—	
s	30	#5	6'-0"	—	
v	32	#4	3'-0"	—	
v1	58	#5	19'-1"	—	
v2	29	#4	5'-8"	—	
v3	15	#5	36'-3"	—	
v4	15	#5	35'-1"	—	
Reinforcement Bars				Pound	9070
Concrete Structures				Cu. Yd.	66.4
Furnishing Steel Piles HP 10x42				Foot	288
Driving Steel Piles				Foot	288
Test Pile Steel HP 10x42				Each	1
Underwater Structure Excavation				Each	1
Protection - Location 1				Each	1
Structure Excavation				Cu. Yd.	194



FILE NAME =
#FILE.#

USER NAME = #USER#

PLOT SCALE = #SCALE#

PLOT DATE = #DATE#

DESIGNED -

DRAWN -

CHECKED -

DATE -

REVISED -

REVISED -

REVISED -

REVISED -



Allen Henderson & Associates, Inc.
Civil and Structural Engineers Springfield, IL
62703 Phone: (217)544-8033 IL Design Firm
No. 184-001907

WEST ABUTMENT

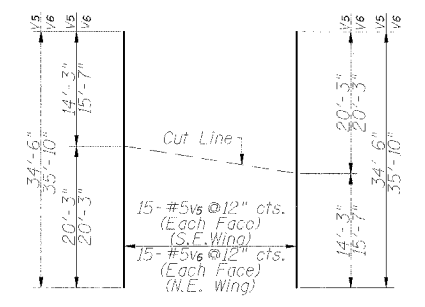
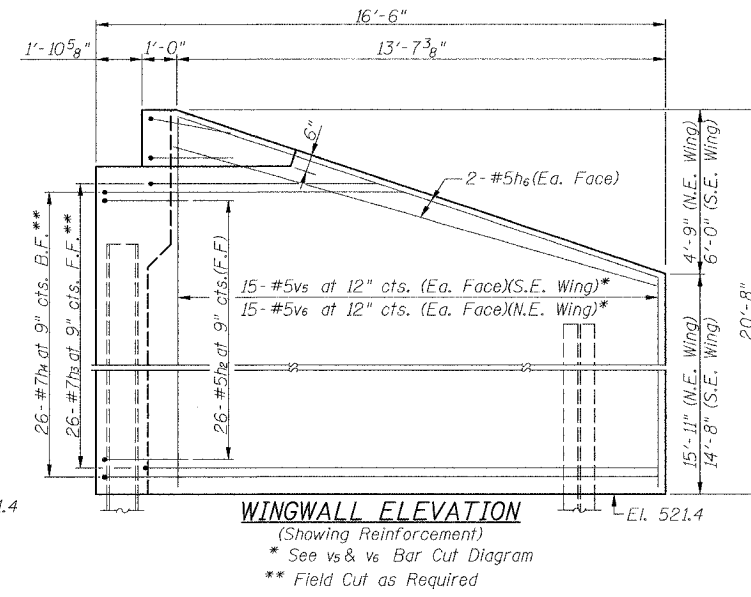
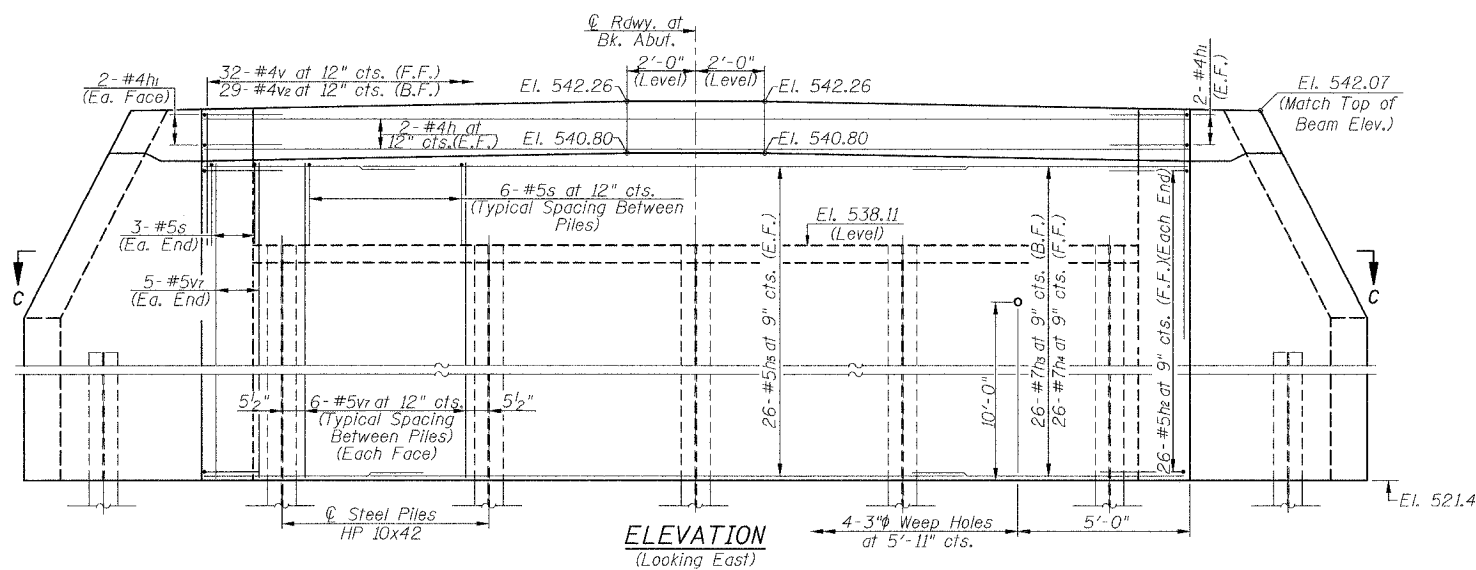
SCALE: SHEET NO. 8 OF 14 SHEETS STA. 5+99.00 TO STA. 11+75.00

T.R. RTE.	SECTION	COUNTY	TOTAL SHEETS	SHEET NO.
34	95-05109-00-BR	MENARD	14	8

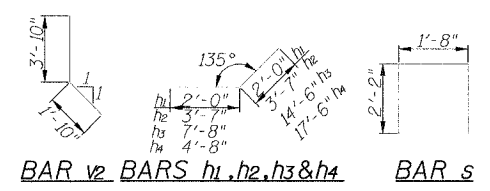
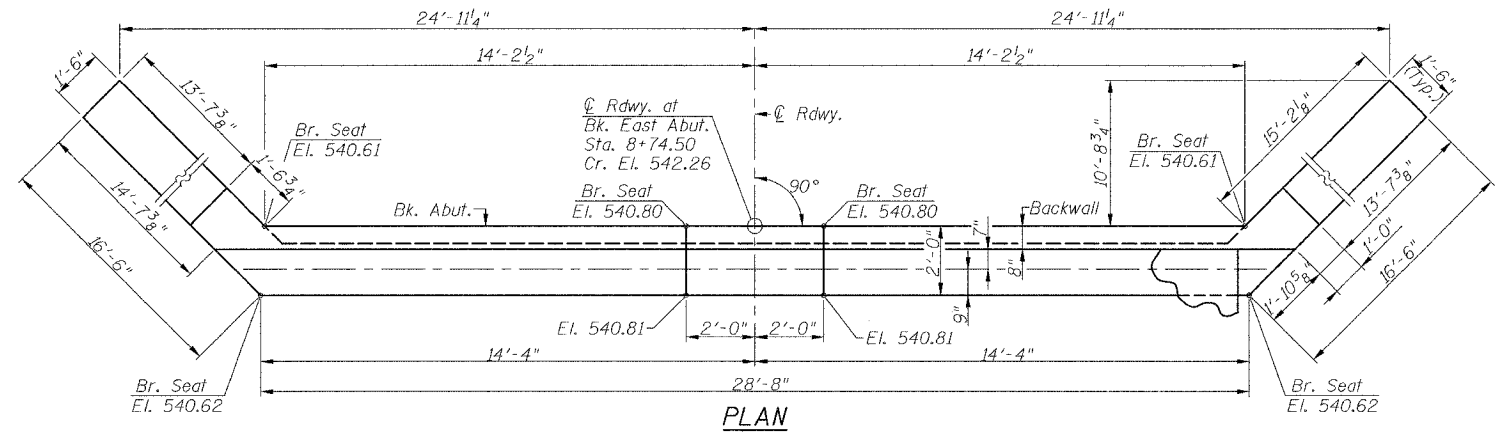
CONTRACT NO.

FED. ROAD DIST. NO. ILLINOIS FED. AID PROJECT

T.R. RTE.	SECTION	COUNTY	TOTAL SHEETS	SHEET NO.
34	95-05109-00-BR	MENARD	14	9
CONTRACT NO.			93160	
FED. ROAD DIST. NO. ILLINOIS FED. AID PROJECT				



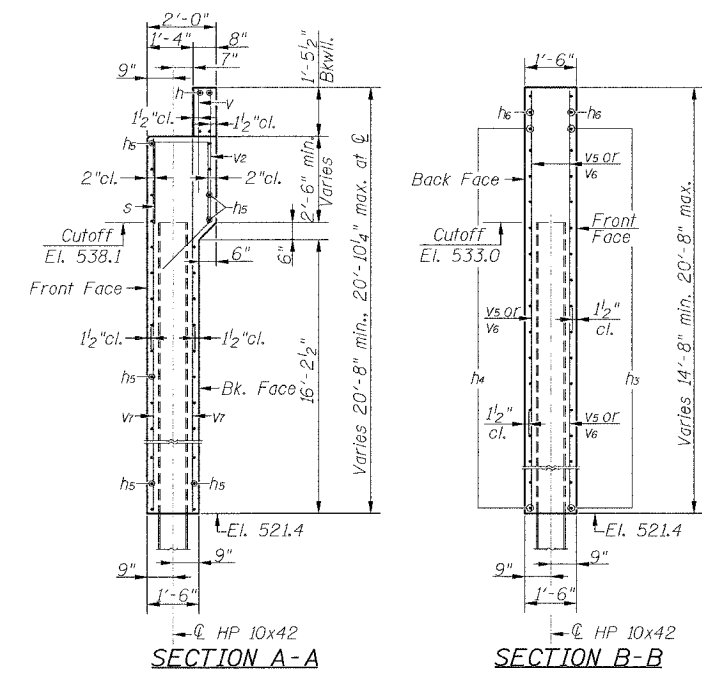
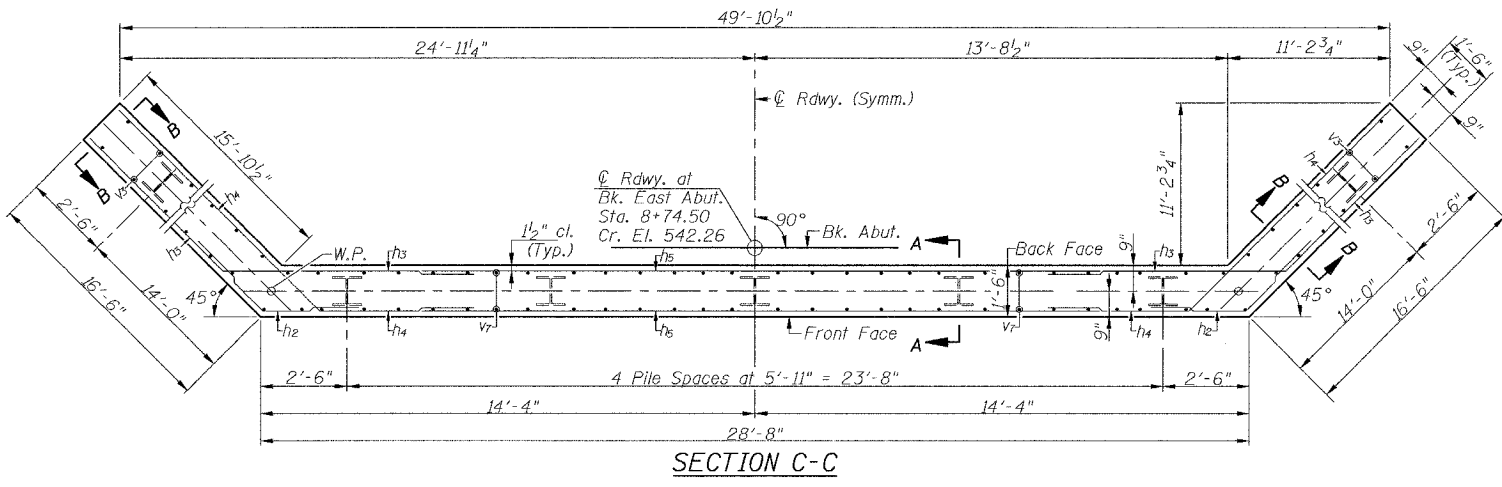
NOTES
 All exposed edges shall have standard 3/4\"/>



PILE DATA

Type: Steel HP 10x42
 Nominal Required Bearing: 300 Kips
 Allowable Resistance Available: 100 Kips
 Est. Length: 48'
 No. of Production Piles: 6
 No. of Test Piles: 1

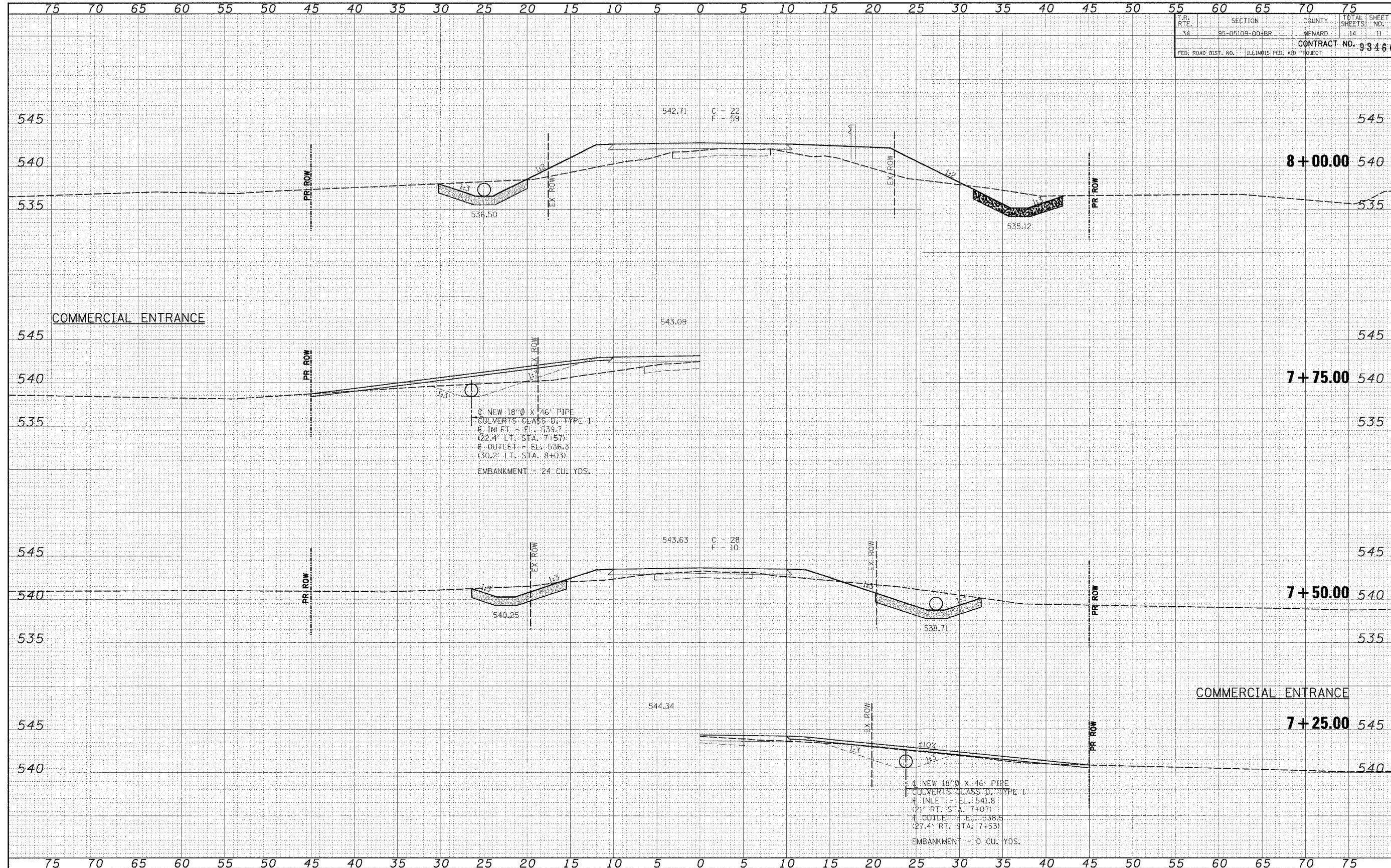
The test pile shall be driven to 110 percent of the Nominal Required Bearing indicated in the pile data information.
 The Steel H-Piles shall be according to AASHTO M270 Grade 50.



BILL OF MATERIAL EAST ABUTMENT


BAR	NO.	SIZE	LENGTH	SHAPE	
h	4	#4	31'-8"	—	
h1	8	#4	4'-0"	—	
h2	52	#5	7'-2"	—	
h3	52	#7	22'-2"	—	
h4	52	#7	22'-2"	—	
h5	52	#5	20'-6"	—	
h6	8	#5	14'-1"	—	
s	30	#5	6'-0"	—	
v	32	#4	3'-0"	—	
v2	29	#4	5'-8"	—	
v5	15	#5	34'-6"	—	
v6	15	#5	35'-10"	—	
vr	58	#5	18'-10"	—	
Reinforcement Bars				Pound	9040
Concrete Structures				Cu. Yd.	65.7
Furnishing Steel Piles HP 10x42				Foot	288
Driving Steel Piles				Foot	288
Test Pile Steel HP 10x42				Each	1
Underwater Structure Excavation				Each	1
Protection - Location 2				Each	1
Structure Excavation				Cu. Yd.	157

F.R. RTE.	SECTION	COUNTY	TOTAL SHEETS	SHEET NO.
34	95-05109-00-BR	MENARD	14	11
CONTRACT NO. 9346				
FED. ROAD DIST. NO. ILLINOIS FED. AID PROJECT				



DATE	BY
DESIGNED	BY
DRAWN	BY
CHECKED	BY
DATE	BY

DATE	BY
DESIGNED	BY
DRAWN	BY
CHECKED	BY
DATE	BY

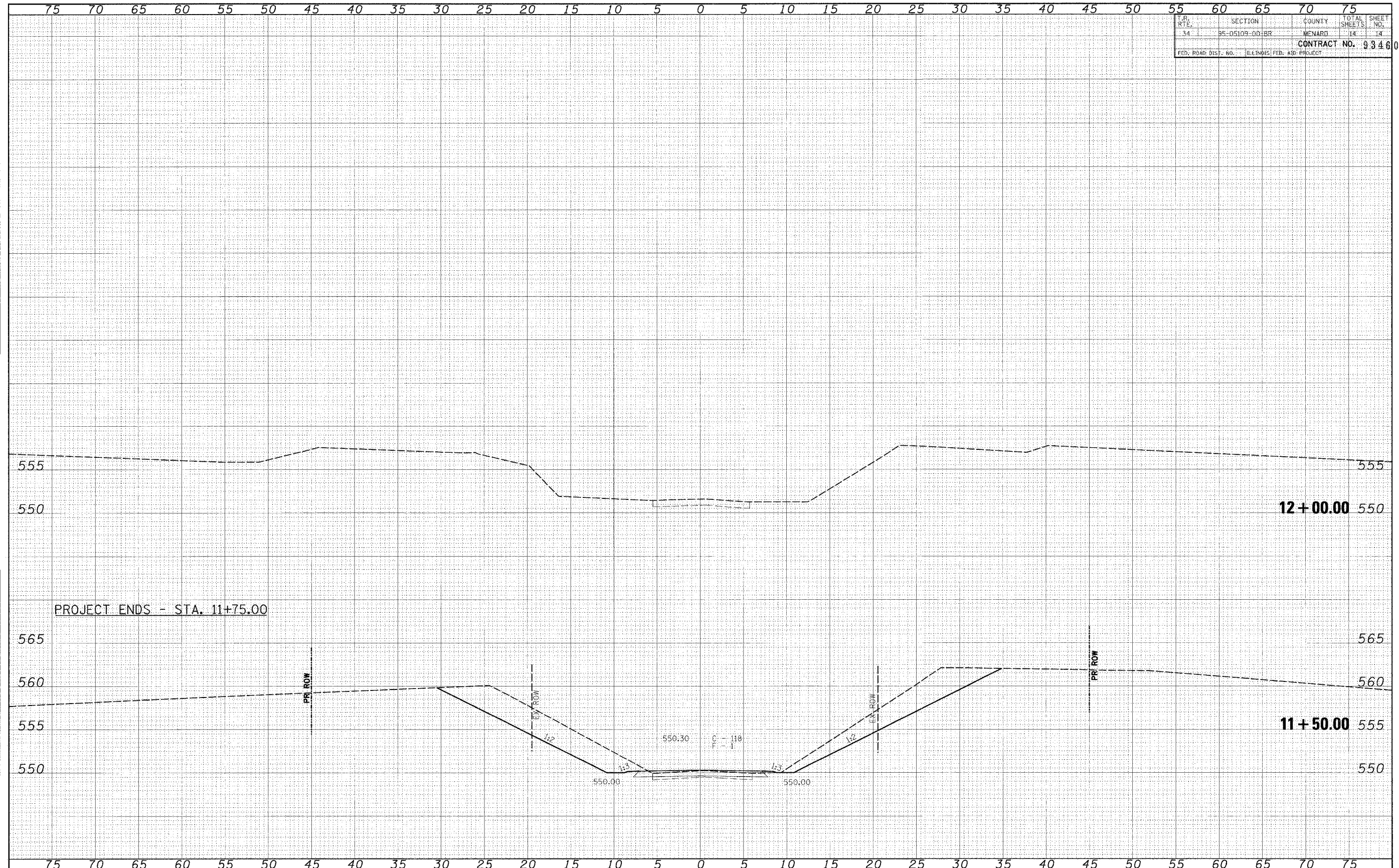
FILE NAME =	USER NAME = #USER#	DESIGNED -	REVISED -	 Allen Henderson & Associates, Inc. Civil and Structural Engineers Springfield, IL 62703 Phone: (217)544-8033 IL Design Firm No. 184-001907	F.A. RTE.	SECTION	COUNTY	TOTAL SHEETS	SHEET NO.
#FILEL#	PLOT SCALE = #SCALE#	DRAWN -	REVISED -		34	95-05109-00-BR	MENARD	14	11
	PLOT DATE = #DATE#	CHECKED -	REVISED -		CONTRACT NO.				
		DATE -	REVISED -		FED. ROAD DIST. NO. ILLINOIS FED. AID PROJECT				
					CROSS SECTIONS				


SCALE: 1" = 5' SHEET NO. 10 OF 14 SHEETS STA. 7+25.00 TO STA. 8+00.00

F.A. RTE.	SECTION	COUNTY	TOTAL SHEETS	SHEET NO.
34	95-05109-00-BR	MENARD	14	14
CONTRACT NO. 93460				
FED. ROAD DIST. NO. ILLINOIS FED. AID PROJECT				

DATE	BY
DESIGNED	
PLOTTED	
TEMPLATE	
AREAS	
PIERS	
CHECKED	
NO.	

DATE	BY
DESIGNED	
PLOTTED	
TEMPLATE	
AREAS	
PIERS	
CHECKED	
NO.	



FILE NAME	USER NAME = #UJH#	DESIGNED -	REVISOR -	 Allen Henderson & Associates, Inc. Civil and Structural Engineers Springfield, IL 62703 Phone: (217)544-8033 IL Design Firm No. 184-001907	CROSS SECTIONS SCALE: 1" = 5' SHEET NO. 14 OF 14 SHEETS STA. 11+50.00 TO STA. 12+00.00		F.A. RTE.	SECTION	COUNTY	TOTAL SHEETS	SHEET NO.
#FILE.#	PLOT SCALE = #SCALE#	DRAWN -	REVISOR -				34	95-05109-00-BR	MENARD	14	14
PLOT DATE = #DATE#	DATE	CHECKED -	REVISOR -				CONTRACT NO.				
							FED. ROAD DIST. NO. ILLINOIS FED. AID PROJECT				