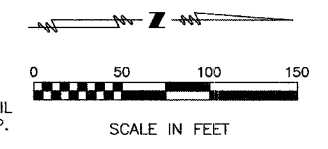
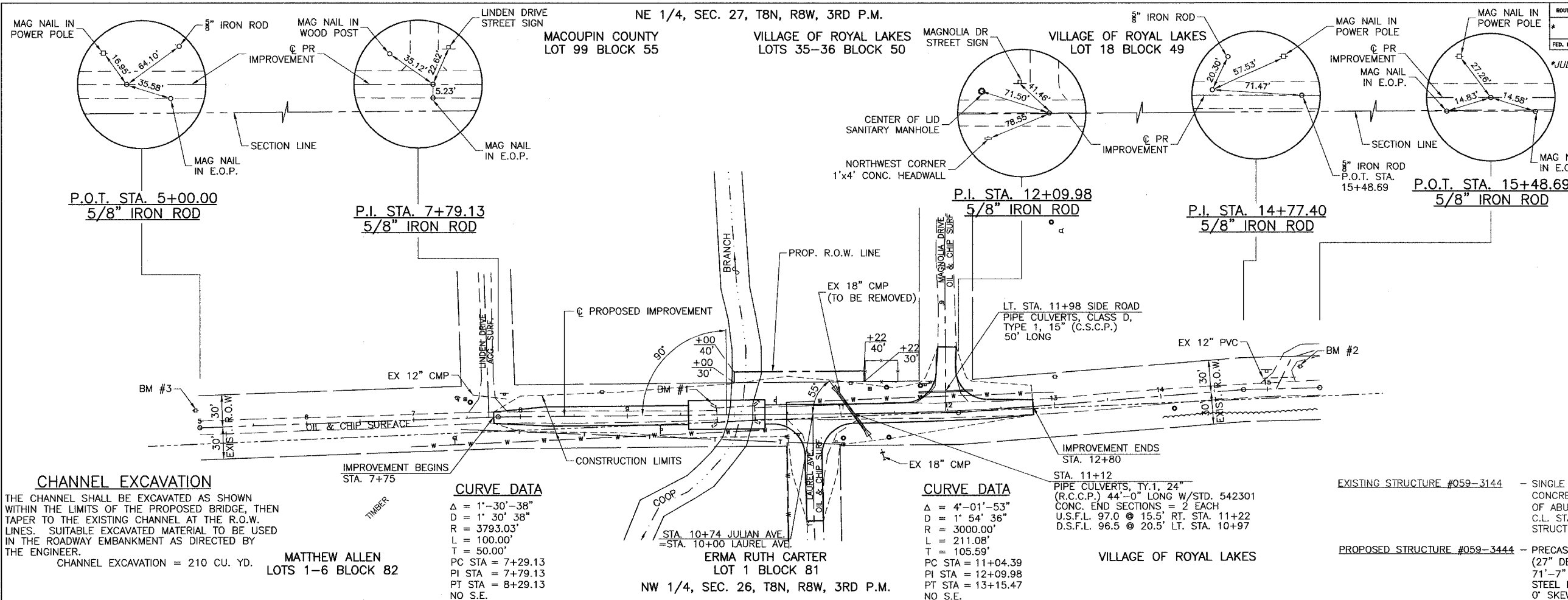


ROUTE NO.	SECTION	COUNTY	TOTAL SHEETS	SHEET NO.
04-0001-00-BR		MACOUPIN	10	3
FED. ROAD DIST. NO. 7		ILLINOIS	FED. AID PROJECT-	



**LEGEND**

- SET IRON PIN
- △ SET MAG NAIL
- MANHOLE
- ⊞ TELEPHONE SPLICE BOX
- ⊞ POWER POLE
- ⊞ SIGN
- ⊞ FIRE HYDRANT
- GUY WIRE
- BURIED TELEPHONE LINE
- WATER MAIN
- STREAM
- EDGE OF TIMBER

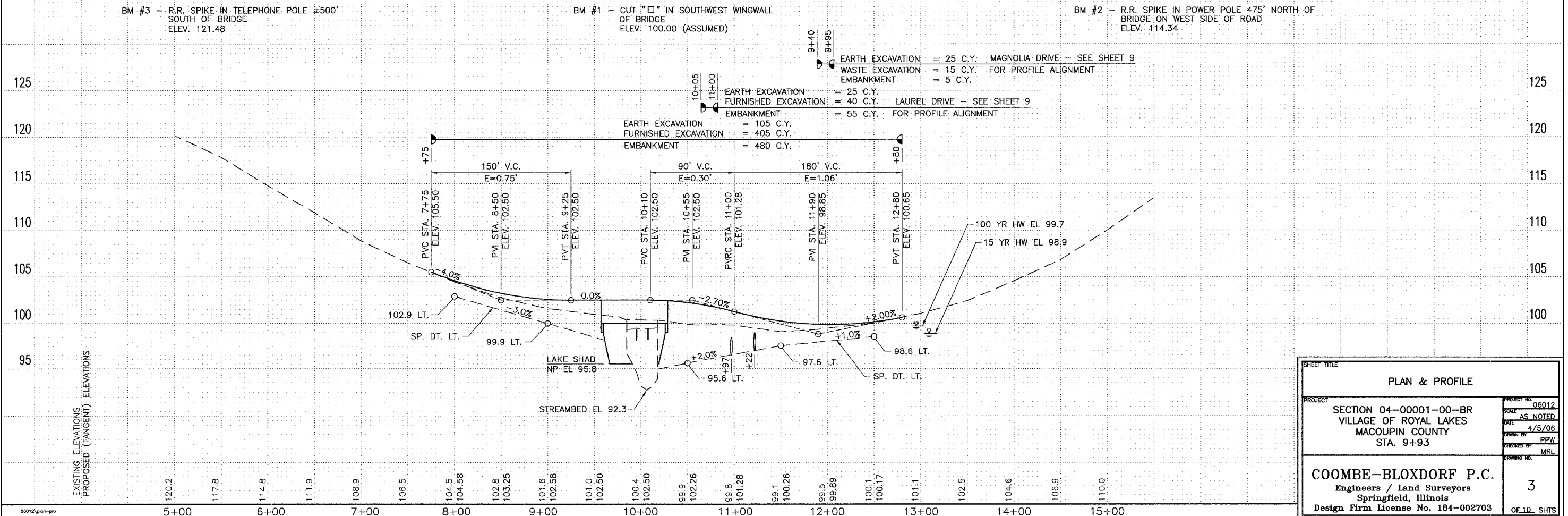
**CHANNEL EXCAVATION**  
 THE CHANNEL SHALL BE EXCAVATED AS SHOWN WITHIN THE LIMITS OF THE PROPOSED BRIDGE, THEN TAPER TO THE EXISTING CHANNEL AT THE R.O.W. LINES. SUITABLE EXCAVATED MATERIAL TO BE USED IN THE ROADWAY EMBANKMENT AS DIRECTED BY THE ENGINEER.  
 CHANNEL EXCAVATION = 210 CU. YD.

**CURVE DATA**  
 Δ = 1°-30'-38"  
 D = 1' 30" 38"  
 R = 3793.03'  
 L = 100.00'  
 T = 50.00'  
 PC STA = 7+29.13  
 PI STA = 7+79.13  
 PT STA = 8+29.13  
 NO S.E.

**CURVE DATA**  
 Δ = 4°-01'-53"  
 D = 1' 54' 36"  
 R = 3000.00'  
 L = 211.08'  
 T = 105.59'  
 PC STA = 11+04.39  
 PI STA = 12+09.98  
 PT STA = 13+15.47  
 NO S.E.

**EXISTING STRUCTURE #059-3144** - SINGLE SPAN STEEL PONY TRUSS ON CLOSED CONCRETE ABUTMENTS AND WINGS, 33.8' FC-FC OF ABUTMENTS, 14.2' O-O DECK, 0' SKEW. C.L. STA. 10+01.6 REMOVAL OF EXISTING STRUCTURE: 1 EACH

**PROPOSED STRUCTURE #059-3444** - PRECAST PRESTRESSED CONCRETE DECK BEAMS (27" DEPTH), ONE SPAN @ 70'-0" 71'-7" BK-BK ABUTS, 27'-0"(MIN) O-O DECK, STEEL RAILING TY S-1, SPILL THRU ABUTMENTS, 0' SKEW, CL STA. 9+93.00



<b>PLAN &amp; PROFILE</b>	
PROJECT SECTION 04-0001-00-BR VILLAGE OF ROYAL LAKES MACOUPIN COUNTY STA. 9+93	PROJECT NO. 06012 SCALE AS NOTED DATE 4/5/06 DRAWN BY PPW CHECKED BY MRL
<b>COOMBE-BLOXDORF P.C.</b> Engineers / Land Surveyors Springfield, Illinois Design Firm License No. 184-002703	3 OF 10 SHITS