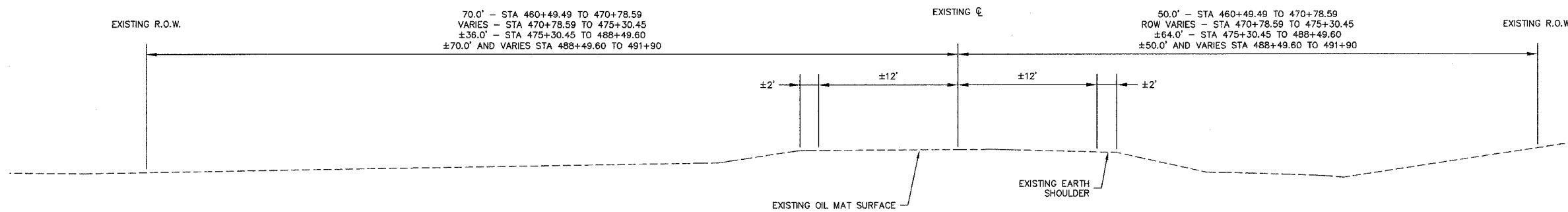
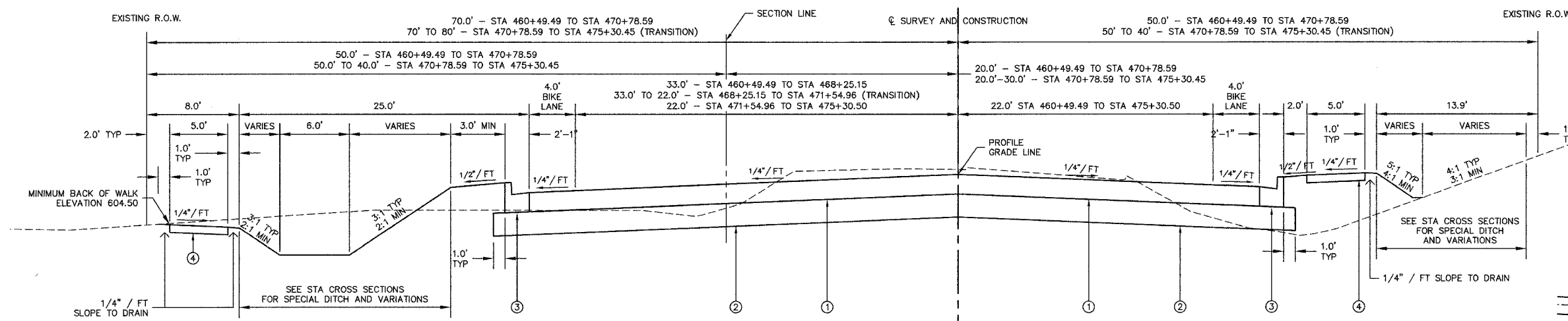


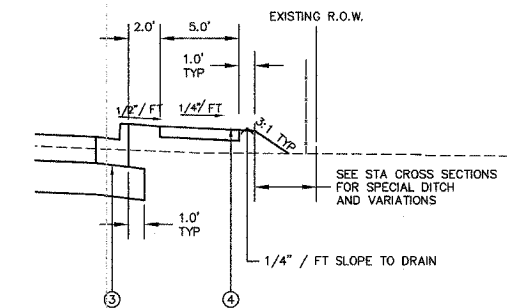
F.A.U. ROUTE	SECTION	COUNTY	TOTAL SHEETS	SHEET NO.
8047	96-00379-00-PV	SANG	66	4
FED. ROAD DIST. NO.		ILLINOIS	FED. AID PROJECT	



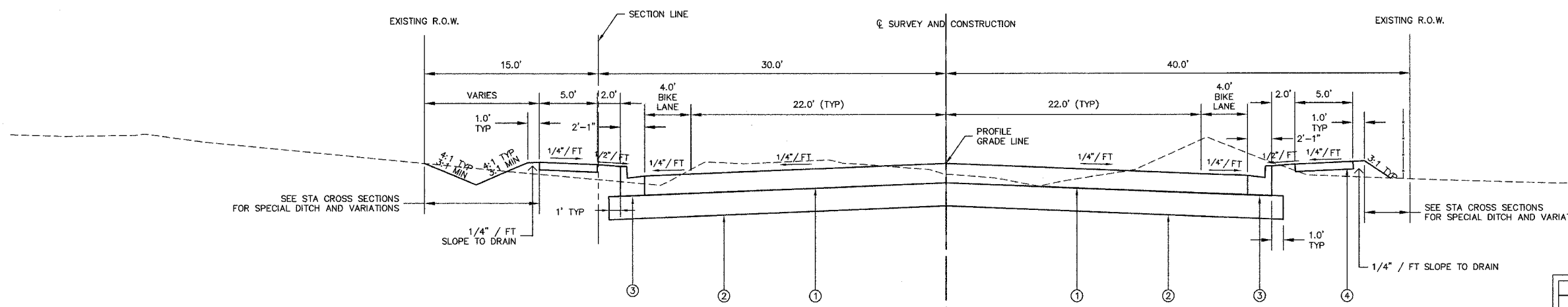
EXISTING TYPICAL SECTION - ILES AVENUE



ILES AVENUE - 5-LANE SECTION
STATION 460+49.49 TO 475+30.50 **



**STATION 474+25 TO 480+00 (RT.)



ILES AVENUE - 4-LANE SECTION
STATION 475+30.50 - 488+49.60 **

FULL DEPTH (SEC. 407) PAVEMENT CONSTRUCTION

HOT-MIX ASPHALT MIXTURE REQUIREMENTS				
ITEM	AGGREGATE COMPOSITION	ASPHALT GRADE	ALLOWABLE RAP	VOIDS
HOT-MIX ASPHALT BINDER COURSE, LOWER 8"	IL-19.0 OR 25.0	PG 64-22	TBD	4% @ N70
HOT-MIX ASPHALT SURFACE COURSE (2")	IL-9.5 OR 12.5 MIX "D"	PG 64-22	TBD	4% @ N70

BITUMINOUS STRUCTURAL DESIGN INFORMATION

DESIGN TRAFFIC (10,300): (2027)
 P.V. = 9,476 S.U. = 721 M.U. = 103
 T.F. = 1.32 (80K)
 DESIGN STRAIN = 97.5
 E = 540 (P.G. 64-22)
 SSR : FAIR
 TOTAL THICKNESS : 10" (FULL-DEPTH HMA)
 CONSTRUCT : 2" HOT-MIX ASPHALT SURFACE
 8" HOT-MIX ASPHALT BINDER COURSE

KEY LEGEND

- ① HOT-MIX ASPHALT PAVEMENT (FULL-DEPTH), 10"
- ② SUB-BASE GRANULAR MATERIAL, TYPE A 12"
- ③ COMBINATION CONCRETE CURB AND GUTTER, TYPE B-6.18
- ④ PORTLAND CEMENT CONCRETE SIDEWALK 4 INCH

NO.	DATE	REVISION	BY
SHEET TITLE			
TYPICAL SECTIONS			PROJECT NO. 96100
ILES AVENUE			SCALE 1" = 5'
PROJECT			DATE OCT, 2007
ILES AVENUE			DRAWN BY MEC
PROJECT			CHECKED BY PBW
ILES AVENUE			DRAWING FILE C-TYP
PROJECT			DRAWING NO. 4
ILES AVENUE			OF 66 SHTS

M.E.C.
 MARTIN ENGINEERING COMPANY
 CONSULTING ENGINEERS AND SURVEYORS
 ILLINOIS PROFESSIONAL DESIGN FIRM NO. 184-002843
 5223 S. MEADOWBROOK RD., SPRINGFIELD, ILLINOIS 62711
 Phone : (217) 688-8800, Fax : (217) 688-8822, E-Mail : mecon@martinengineeringco.com

ALL RIGHTS RESERVED BY THE ENGINEERING FIRM. NO PART OF THIS DOCUMENT IS TO BE REPRODUCED OR TRANSMITTED IN ANY FORM OR BY ANY MEANS, ELECTRONIC OR MECHANICAL, INCLUDING PHOTOCOPYING, RECORDING, OR BY ANY INFORMATION STORAGE AND RETRIEVAL SYSTEM, WITHOUT THE WRITTEN PERMISSION OF THE ENGINEERING FIRM.