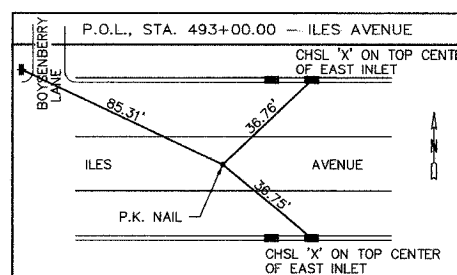
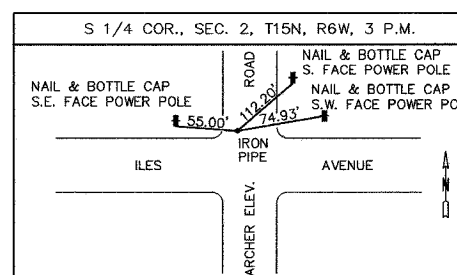
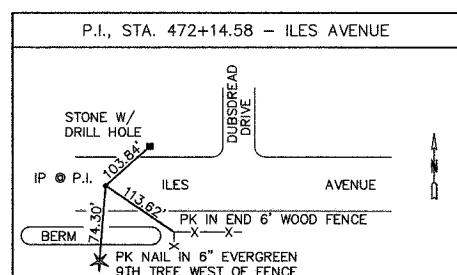
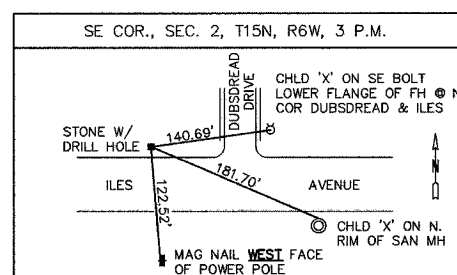
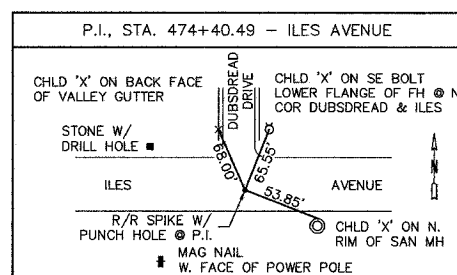
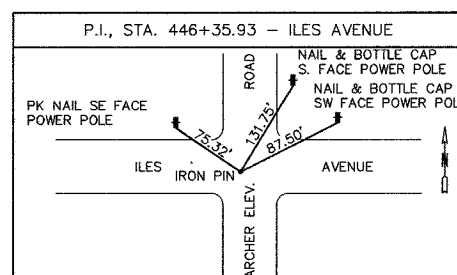
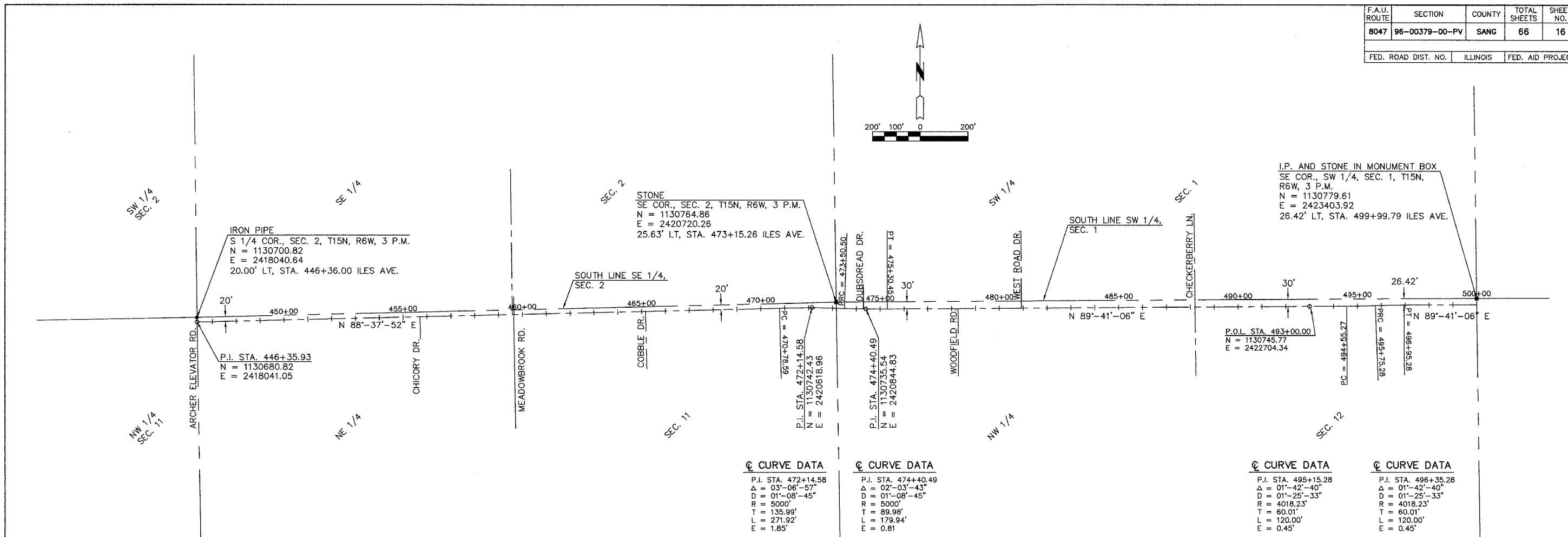


F.A.U. ROUTE	SECTION	COUNTY	TOTAL SHEETS	SHEET NO.
8047	96-00379-00-PV	SANG	66	16
FED. ROAD DIST. NO.		ILLINOIS	FED. AID PROJECT	



BENCHMARKS

BENCHMARK	STATION / OFFSET	LOCATION / DESCRIPTION	ELEVATION
1	21' LT., STA. 446+59	SPIKE IN NORTH FACE OF UTILITY POLE SE COR. OF ARCHER AND ILES INTERSECTION	610.69
2	70' RT., STA. 455+89	SOUTH CAP BOLT OF FIRE HYDRANT SE COR. OF ILES AND CHICORY INTERSECTION	609.60
3	8.3' RT., STA. 465+17	CHISELED SQUARE CUT IN TOP OF CURB N. END OF ISLAND, COBBLESTONE DR. ENTRANCE	608.53
5	55' RT., STA. 488+35	BACK OF CURB, N. SIDE CONCRETE DRIVE SOUTH SIDE ILES, 2500 CHECKERBERRY LANE	608.53
10	60' LT., STA. 459+35	NORTH CAP BOLT OF FIRE HYDRANT WITH ARROW NW COR. OF ILES AND MEADOWBROOK INTERSECTION	608.20
12	35' LT., STA. 486+16	SOUTH CAP BOLT OF FIRE HYDRANT NORTH SIDE OF ILES AVE. @ ADDRESS 3601	609.57
			607.59
14	64' LT., STA. 474+51	SOUTH CAP BOLT OF FIRE HYDRANT NE COR. OF ILES AVE. AND DUBSDREAD DR.	611.91
15		NORTH CAP BOLT OF FIRE HYDRANT NW COR. OF ILES AND KOKE MILL INTERSECTION	612.33

HORIZONTAL AND VERTICAL CONTROL SHOWN ON THIS SHEET ARE FOR THE CONSTRUCTION LAYOUT OF THE IMPROVEMENTS ON ILES AVENUE ONLY.

NO.	DATE	REVISION	BY
SHEET TITLE			
ALIGNMENT TIES AND BENCHMARKS			PROJECT NO. 96100
ILES AVENUE			SCALE 1" = 200'
PROJECT			DATE OCT., 2007
DRAWN BY MEC			CHECKED BY MEC
DRAWING TITLE C-CONT			DRAWING NO.
 MARTIN ENGINEERING COMPANY of Illinois CONSULTING ENGINEERS AND SURVEYORS ILLINOIS PROFESSIONAL DESIGN FIRM NO. 154-002843 3223 S. MEADOWBROOK RD., SPRINGFIELD, ILLINOIS 62711 Phone: (217) 698-8950, Fax: (217) 698-8222, E-Mail: mecmall@martinengineeringco.com			16
			OF 66 SHEETS