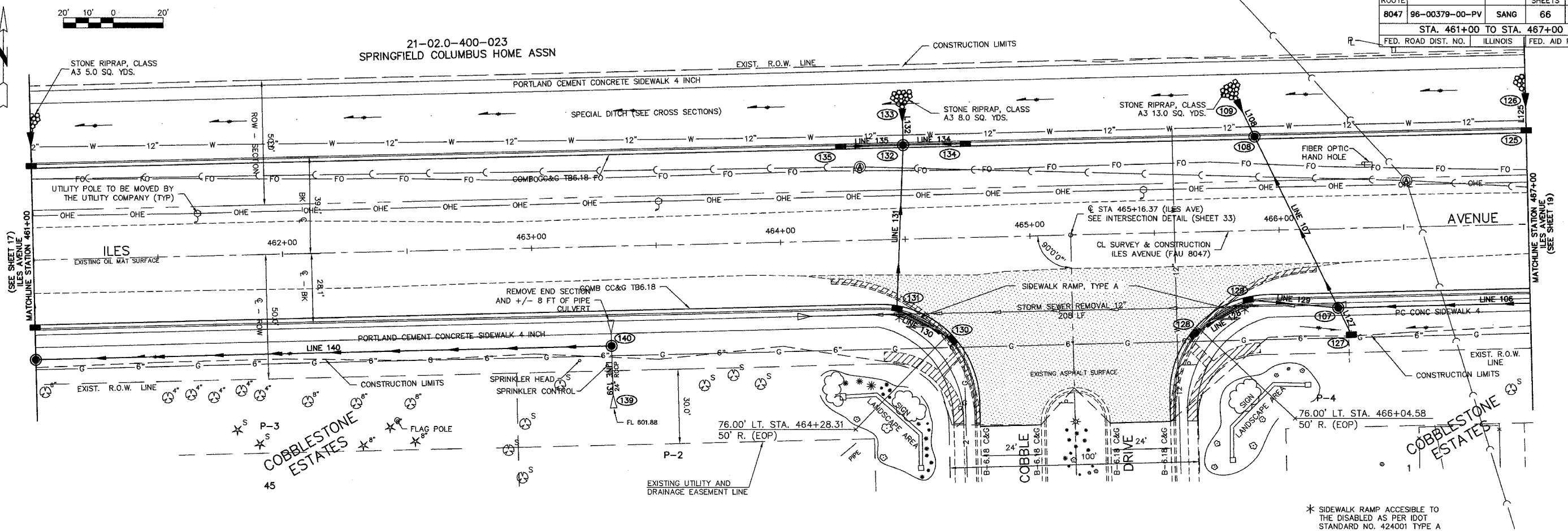
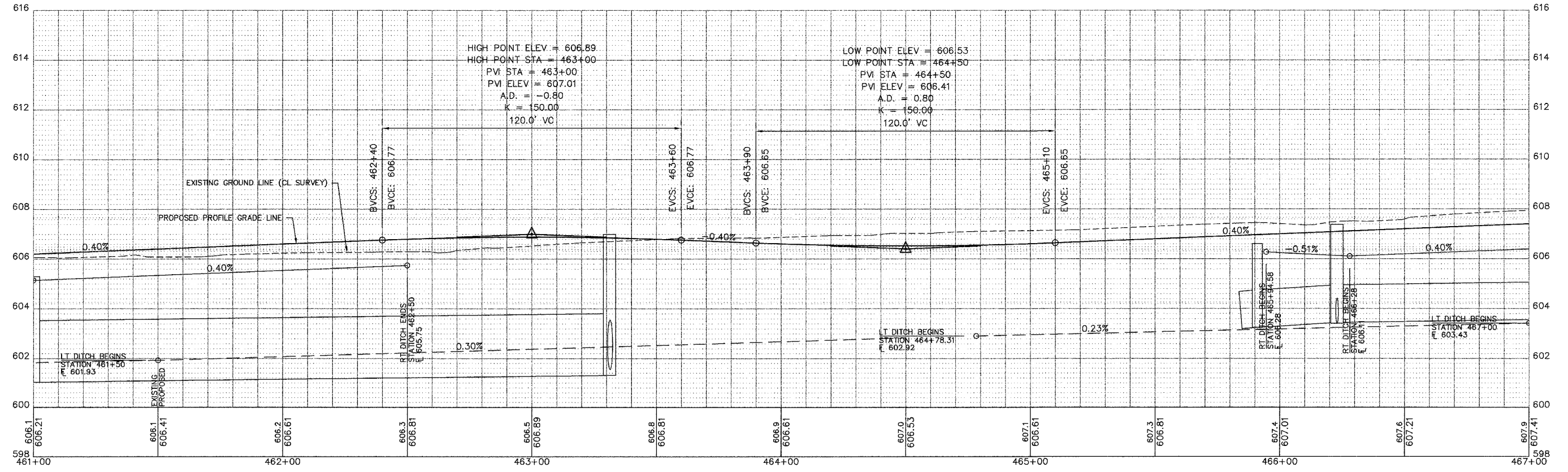


F.A.U. ROUTE	SECTION	COUNTY	TOTAL SHEETS	SHEET NO.
8047	96-00379-00-PV	SANG	66	18
STA. 461+00 TO STA. 467+00				
FED. ROAD DIST. NO.	ILLINOIS	FED. AID PROJECT		



* SIDEWALK RAMP ACCESSIBLE TO THE DISABLED AS PER DOT STANDARD NO. 424001 TYPE A



SCALES
 1" = 20' HORIZONTAL
 1" = 2' VERTICAL

PLAN & PROFILE - ILES AVENUE
 STATION 461+00 - 467+00
 SHEET 18 OF 66 SHEETS