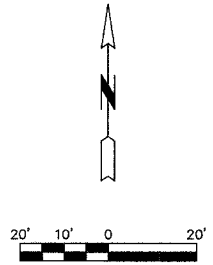
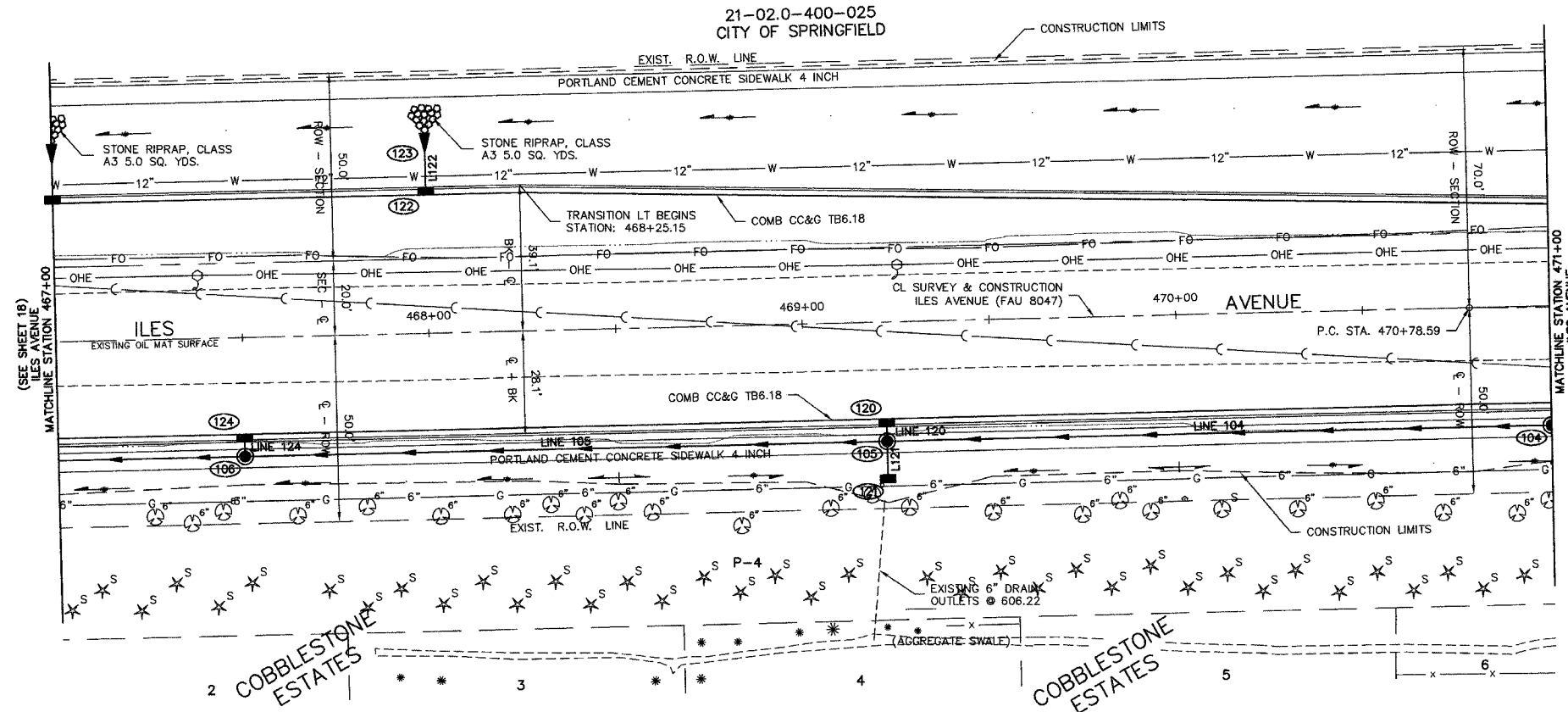
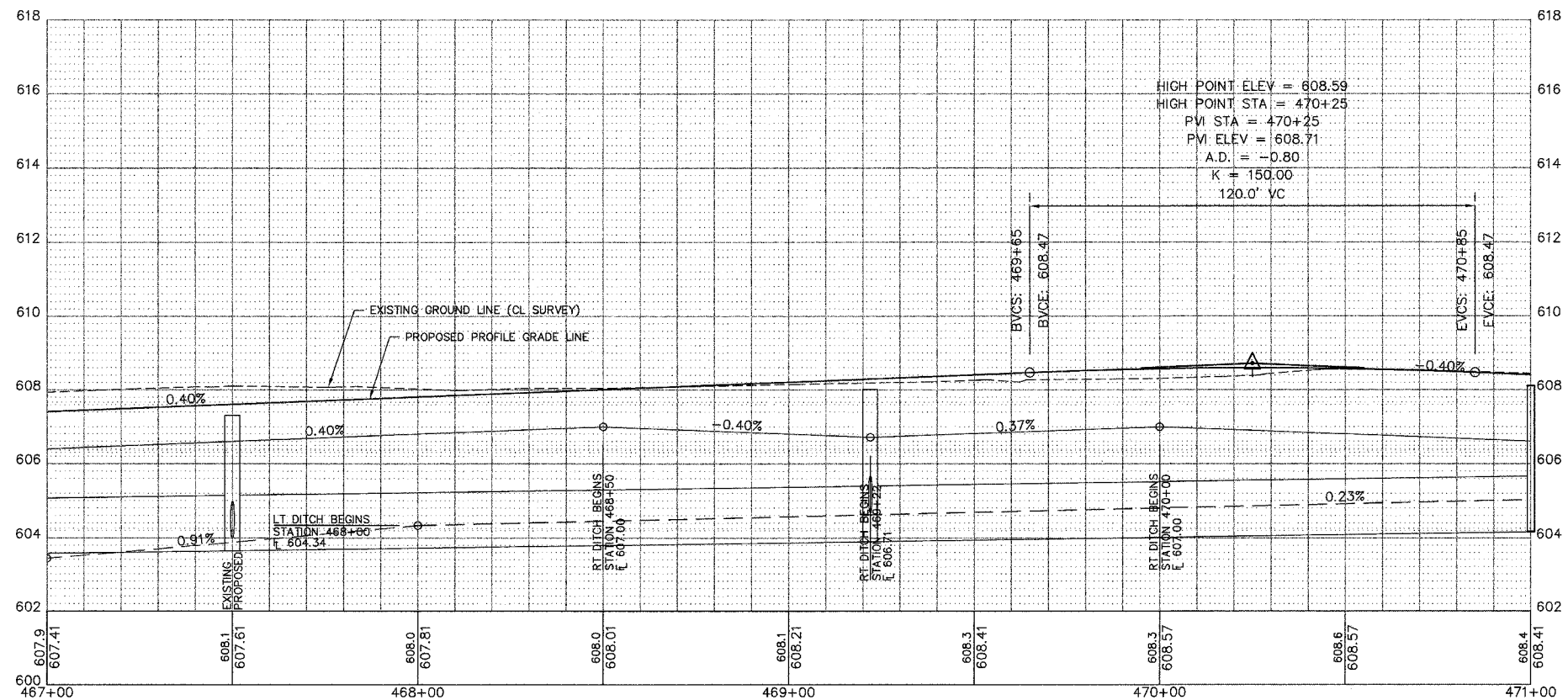


F.A.U. ROUTE	SECTION	COUNTY	TOTAL SHEETS	SHEET NO.
8047	96-00379-00-PV	SANG	66	19
STA. 467+00 TO STA. 471+00				
FED. ROAD DIST. NO.	ILLINOIS	FED. AID PROJECT		



NOTES: CONTRACTOR TO SAW CUT AT ALL EXISTING PAVEMENT EDGES AND CURBS



SCALES
1" = 20' HORIZONTAL
1" = 2' VERTICAL

PLAN & PROFILE - ILES AVENUE
STATION 467+00 - 471+00
SHEET 19 OF 66 SHEETS