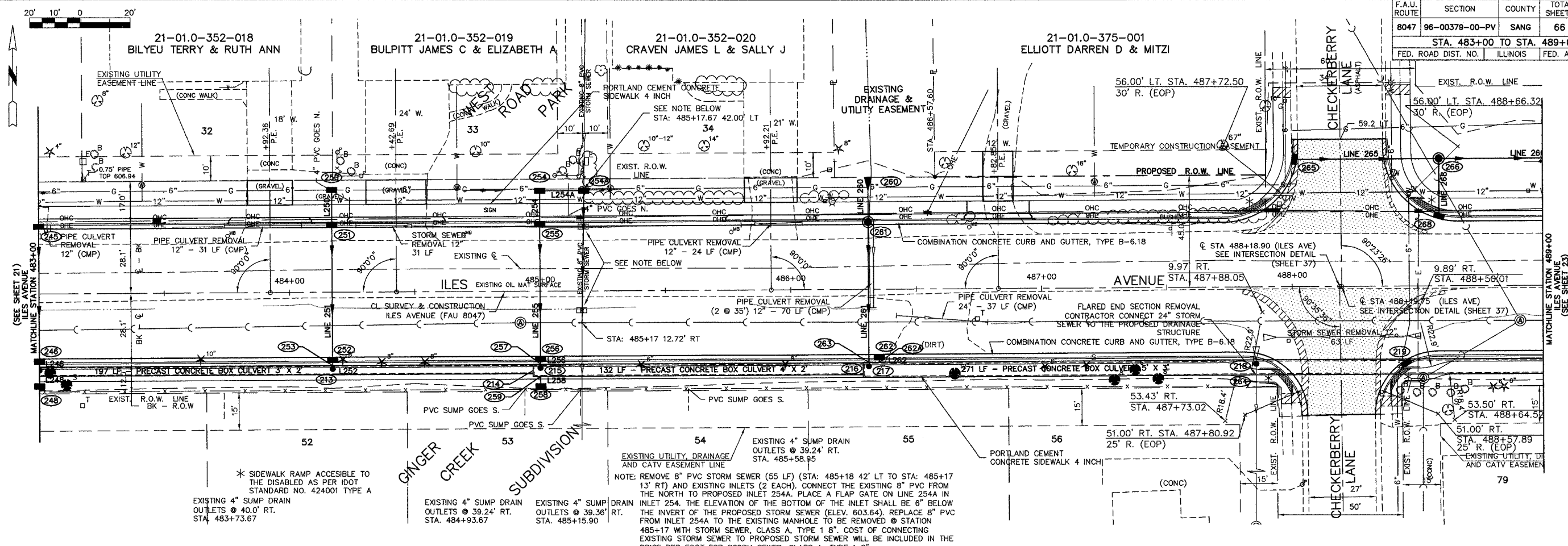


F.A.U. ROUTE	SECTION	COUNTY	TOTAL SHEETS	SHEET NO.
8047	96-00379-00-PV	SANG	66	22
STA. 483+00 TO STA. 489+00				
FED. ROAD DIST. NO.	ILLINOIS	FED. AID PROJECT		

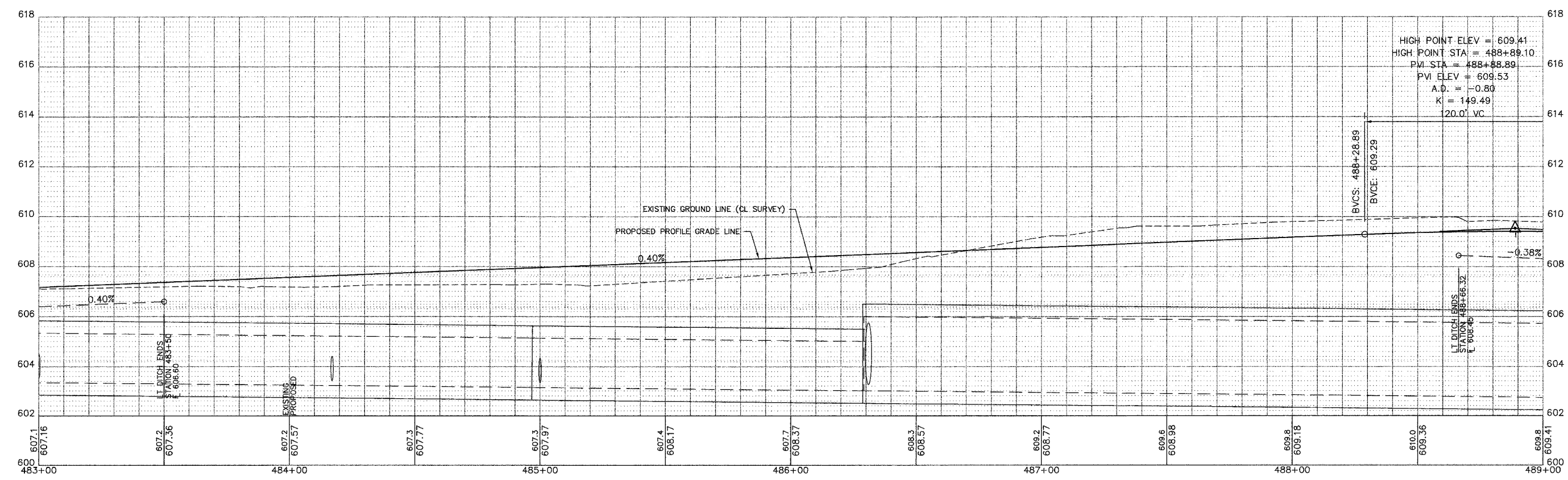


* SIDEWALK RAMP ACCESSIBLE TO THE DISABLED AS PER IDOT STANDARD NO. 424001 TYPE A
 EXISTING 4" SUMP DRAIN OUTLETS @ 40.0' RT. STA. 483+73.67

EXISTING 4" SUMP DRAIN OUTLETS @ 39.24' RT. STA. 484+93.67

EXISTING 4" SUMP DRAIN OUTLETS @ 39.36' RT. STA. 485+15.90

NOTE: REMOVE 8" PVC STORM SEWER (55 LF) (STA: 485+18 42' LT TO STA: 485+17 13' RT) AND EXISTING INLETS (2 EACH). CONNECT THE EXISTING 8" PVC FROM THE NORTH TO PROPOSED INLET 254A. PLACE A FLAP GATE ON LINE 254A IN THE NORTH TO PROPOSED INLET 254A. THE ELEVATION OF THE BOTTOM OF THE INLET SHALL BE 6" BELOW THE INVERT OF THE PROPOSED STORM SEWER (ELEV. 603.64). REPLACE 8" PVC FROM INLET 254A TO THE EXISTING MANHOLE TO BE REMOVED @ STATION 485+17 WITH STORM SEWER, CLASS A, TYPE 1 8". COST OF CONNECTING EXISTING STORM SEWER TO PROPOSED STORM SEWER WILL BE INCLUDED IN THE PRICE PER FOOT FOR STORM SEWER, CLASS A, TYPE 1 8"



SCALES
 1" = 20' HORIZONTAL
 1" = 2' VERTICAL
 PLAN & PROFILE - ILES AVENUE
 STATION 483+00 - 489+00
 SHEET 22 OF 66 SHEETS