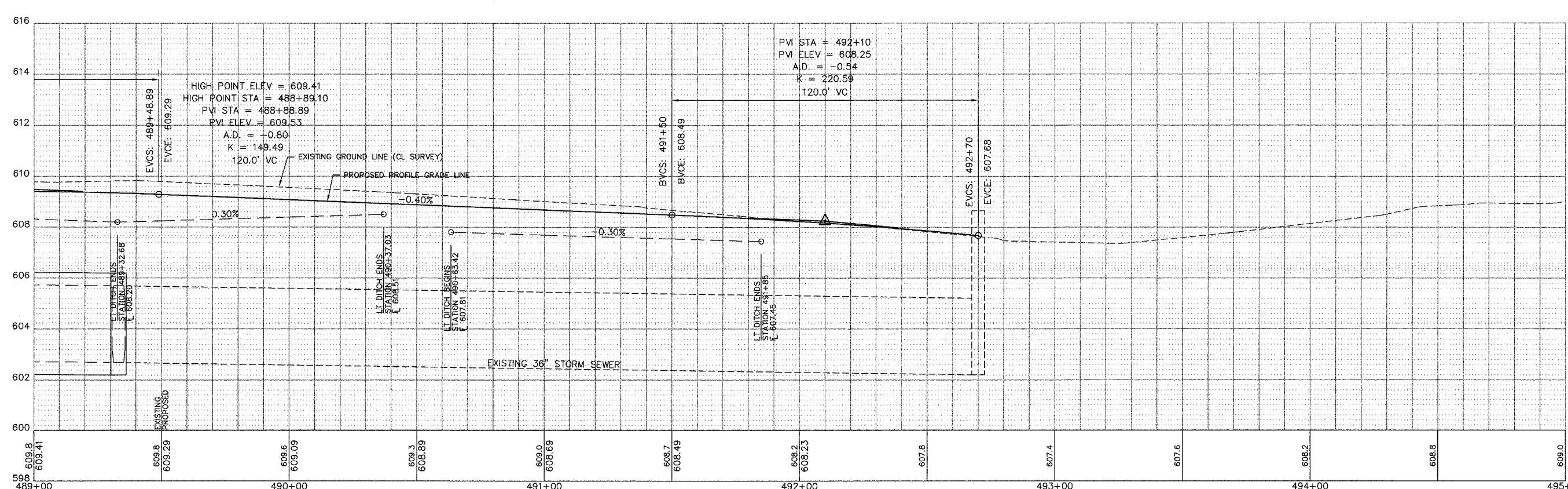
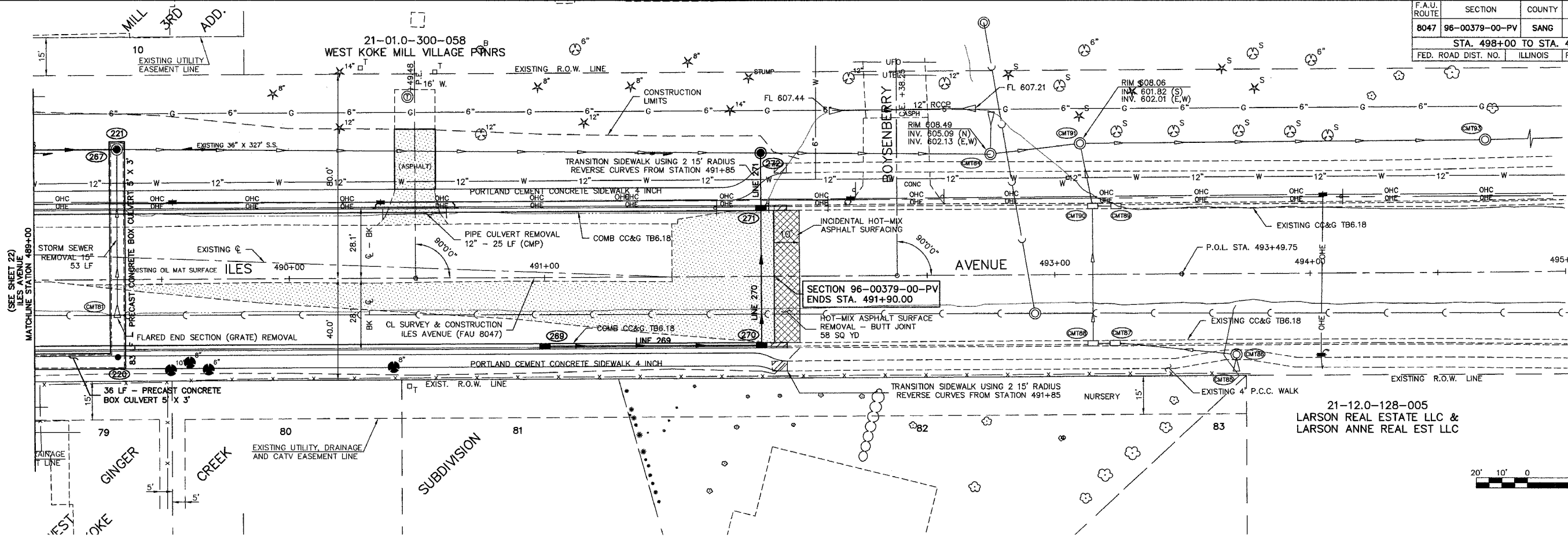


F.A.U. ROUTE	SECTION	COUNTY	TOTAL SHEETS	SHEET NO.
8047	96-00379-00-PV	SANG	66	23
STA. 498+00 TO STA. 491+90				
FED. ROAD DIST. NO.	ILLINOIS	FED. AID PROJECT		



SCALES
 1" = 20' HORIZONTAL
 1" = 2' VERTICAL

PLAN & PROFILE - ILES AVENUE
 STATION 489+00 - 491+90
 SHEET 23 OF 66 SHEETS

Attached (s) to: Road 41
 10-BASE (C:\Users\mro\Documents\2007\CONPLANS_2007\CONPLANS_2007\10-BASE.dwg)
 11-TRUCK (C:\Users\mro\Documents\2007\CONPLANS_2007\CONPLANS_2007\11-TRUCK.dwg)