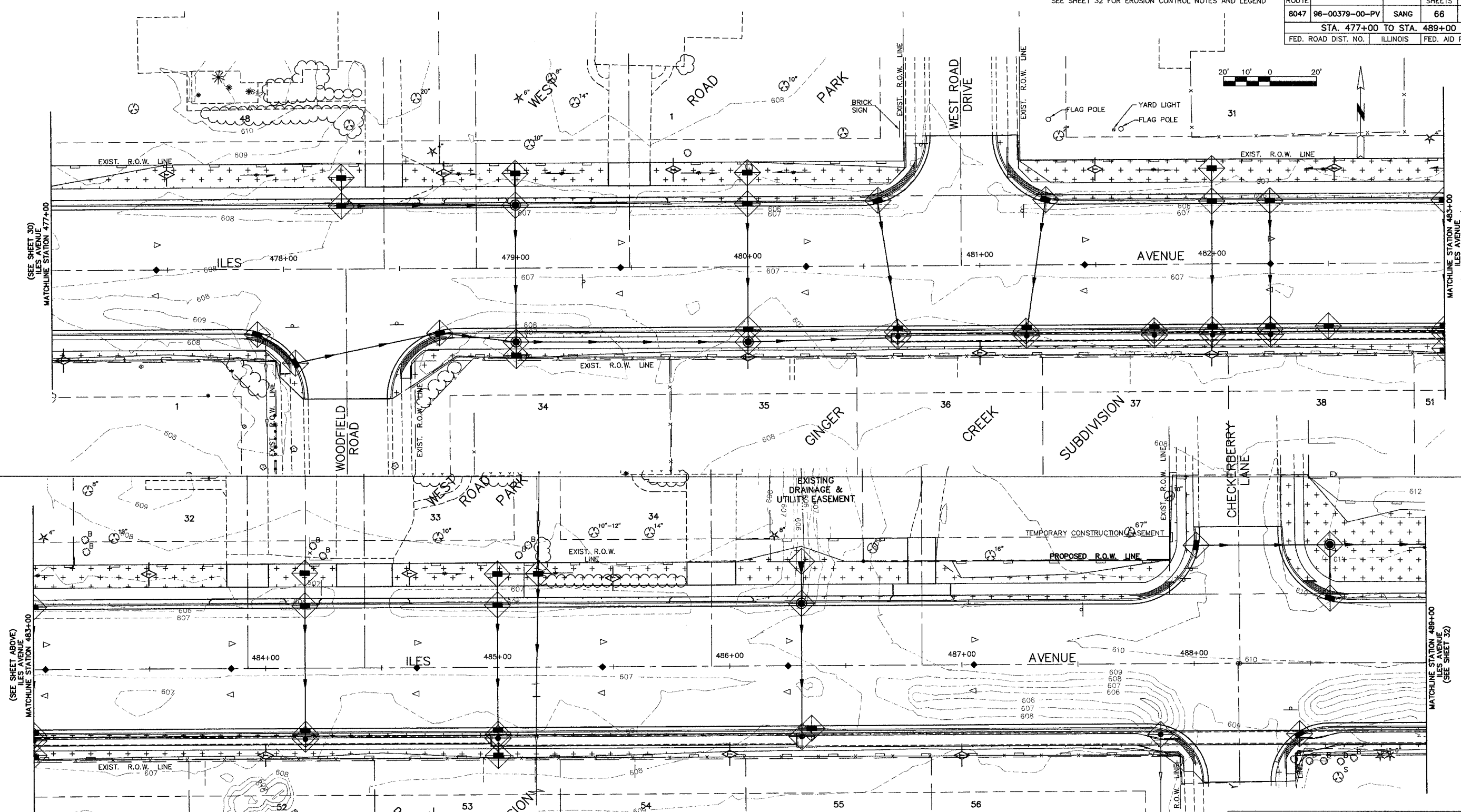
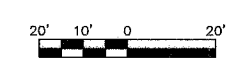


F.A.U. ROUTE	SECTION	COUNTY	TOTAL SHEETS	SHEET NO.
8047	96-00379-00-PV	SANG	66	31
STA. 477+00 TO STA. 489+00				
FED. ROAD DIST. NO.	ILLINOIS	FED. AID PROJECT		

SEE SHEET 32 FOR EROSION CONTROL NOTES AND LEGEND



SCHEDULE OF QUANTITIES

PAY ITEM	UNIT	QUANTITY
TEMPORARY DITCH CHECKS	EACH	15
PERIMETER EROSION BARRIER	FOOT	2164
INLET AND PIPE PROTECTION	EACH	52

NO.	DATE	REVISION	BY
SHEET TITLE			PROJECT NO.
EROSION AND SEDIMENT CONTROL DETAILS			96100
PROJECT			ILES AVENUE
DRAWN BY			MEC
CHECKED BY			MEC
DRAWING FILE			C-SWPP
DRAWING NO.			31
OF 66 SHEETS			

MEC
MARTIN ENGINEERING COMPANY of Illinois
CONSULTING ENGINEERS/LAND SURVEYORS
ILLINOIS PROFESSIONAL DESIGN FIRM NO. 084-028843
3223 S. MEADOWBROOK RD., SPRINGFIELD, ILLINOIS 62711
Phone: (217) 698-8900, Fax: (217) 698-8922, E-Mail: mecmec@martinengineeringco.com

Approved (MEC) Revised (M) 3/21/2008
 3/21/2008 9:47 AM, RPOTTS, 1:1
 G:\Jobs\96100\CONPLANS_2007\C-SWPP.dwg, 477+00 - 489+00, 3/21/2008 9:47 AM, RPOTTS, 1:1