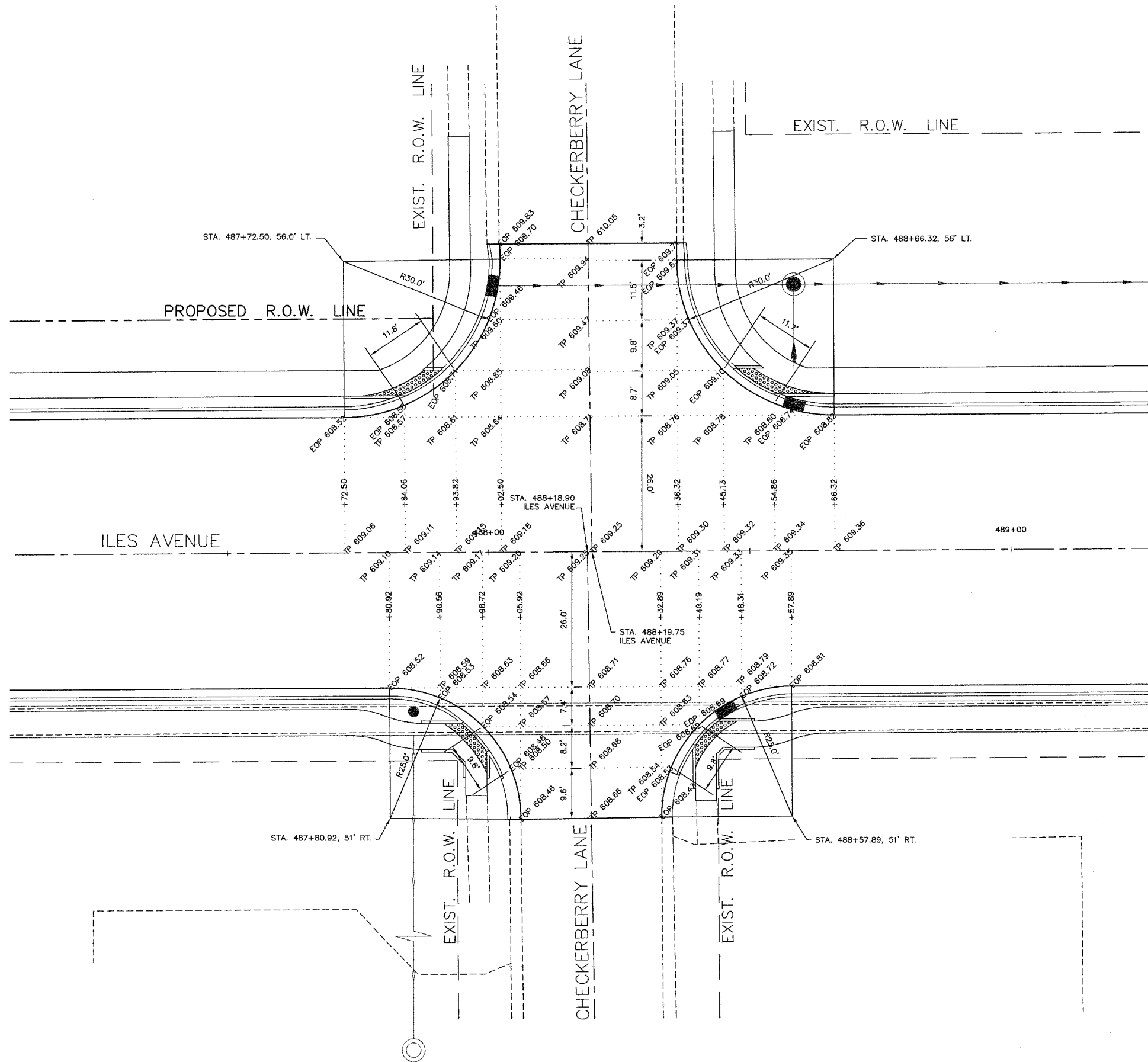
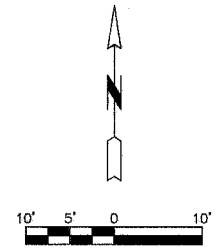


F.A.U. ROUTE	SECTION	COUNTY	TOTAL SHEETS	SHEET NO.
8047	96-00379-00-PV	SANG	66	37
FED. ROAD DIST. NO.		ILLINOIS	FED. AID PROJECT	



LEGEND
 TP - TOP OF PAVEMENT
 EOP - EDGE OF PAVEMENT

NOTES
 1) ALL SPOT ELEVATIONS AND DIMENSIONS THAT REFER TO CURBING REFERENCE THE FACE OF THE CURB (EOP), UNLESS OTHERWISE NOTED.

NO.	DATE	REVISION	BY
SHEET TITLE INTERSECTION DETAILS CHECKERBERRY LANE			
PROJECT ILES AVENUE			
			PROJECT NO. 96100 SCALE 1" = 10' DATE OCT. 2007 DRAWN BY MEC CHECKED BY PSW DRAWING FILE C-INTR DRAWING NO. 37 OF 66 SHEETS