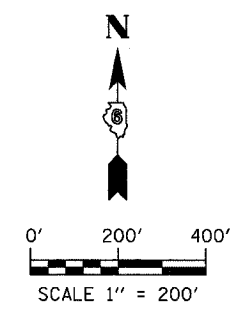
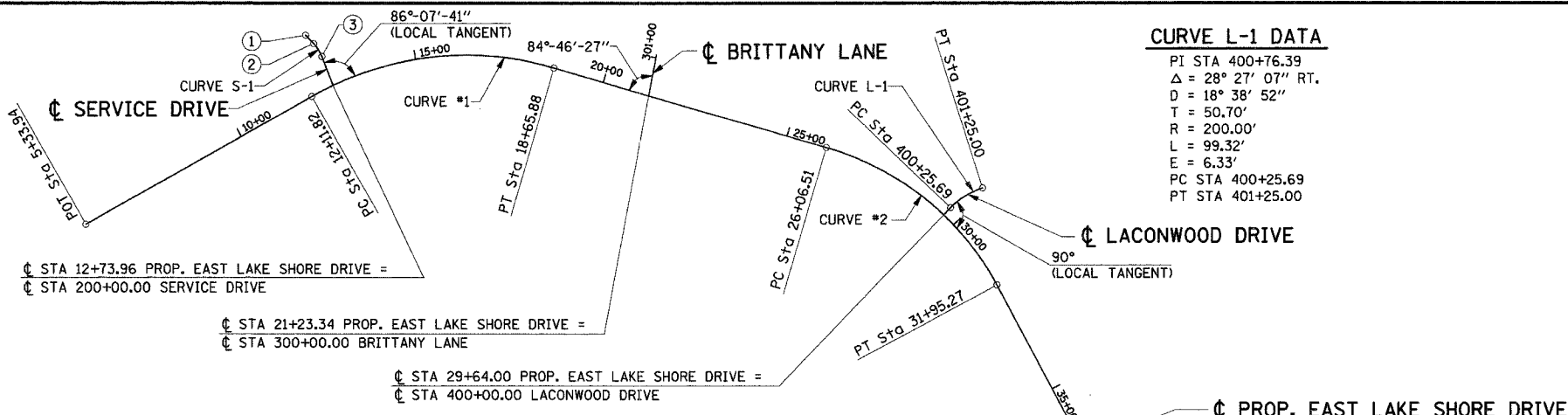


FAU	SECTION	COUNTY	TOTAL SHEETS	SHEET NO.
7998	97-00030-06-WR	SANGAMON	117	21
FED. ROAD DIST. NO.		ILLINOIS	FED. AID PROJECT	



**CURVE DATA S-1**  
 PI STA 200+99.66  
 $\Delta = 22^\circ 44' 30''$  (LT)  
 $D = 57^\circ 17' 45''$   
 $T = 20.11'$   
 $R = 100.00'$   
 $L = 39.69'$   
 $E = 2.00'$   
 PC STA 200+79.55  
 PT STA 201+19.24

**CURVE L-1 DATA**  
 PI STA 400+76.39  
 $\Delta = 28^\circ 27' 07''$  RT.  
 $D = 18^\circ 38' 52''$   
 $T = 50.70'$   
 $R = 200.00'$   
 $L = 99.32'$   
 $E = 6.33'$   
 PC STA 400+25.69  
 PT STA 401+25.00



$\text{CL STA } 12+73.96 \text{ PROP. EAST LAKE SHORE DRIVE} =$   
 $\text{CL STA } 200+00.00 \text{ SERVICE DRIVE}$   
 $\text{CL STA } 21+23.34 \text{ PROP. EAST LAKE SHORE DRIVE} =$   
 $\text{CL STA } 300+00.00 \text{ BRITTANY LANE}$   
 $\text{CL STA } 29+64.00 \text{ PROP. EAST LAKE SHORE DRIVE} =$   
 $\text{CL STA } 400+00.00 \text{ LACONWOOD DRIVE}$

**CURVE DATA #1**  
 PI STA 15+57.44  
 $\Delta = 45^\circ 47' 02''$  (RT)  
 $D = 7^\circ 00' 00''$   
 $T = 345.62'$   
 $R = 818.51'$   
 $L = 654.05'$   
 $E = 69.98'$   
 PC STA 12+11.82  
 PT STA 18+65.88

**CURVE DATA #2**  
 PI STA 29+17.50  
 $\Delta = 45^\circ 37' 45''$  (RT)  
 $D = 7^\circ 45' 00''$   
 $T = 310.99'$   
 $R = 739.30'$   
 $L = 588.76'$   
 $E = 62.75'$   
 PC STA 26+06.51  
 PT STA 31+95.27

**CURVE DATA #3**  
 PI STA 45+66.81  
 $\Delta = 58^\circ 10' 55''$  (RT)  
 $D = 4^\circ 00' 00''$   
 $T = 796.96'$   
 $R = 1,432.39'$   
 $L = 1,454.55'$   
 $E = 206.78'$   
 PC STA 37+69.85  
 PT STA 52+24.40

$\text{CL STA } 42+36.68 \text{ PROP. EAST LAKE SHORE DRIVE} =$   
 $\text{CL STA } 500+00.00 \text{ BUCKEYE DRIVE}$

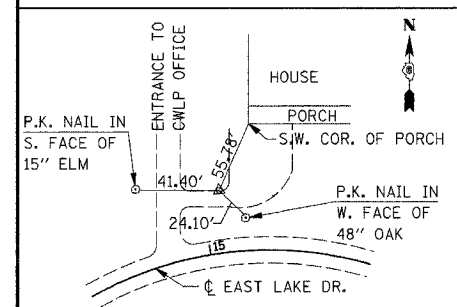
- ① POT STA 201+50.00
- ② PT Sta 201+19.24
- ③ PC Sta 200+79.55
- ④ POT Sta 97+32.67
- ⑤ PC Sta 97+71.91
- ⑥ PT Sta 98+58.97

**CURVE DATA #6**  
 PI STA 97+85.31  
 $\Delta = 25^\circ 49' 13''$  (RT)  
 $D = 28^\circ 38' 52''$   
 $T = 45.84'$   
 $R = 200.00'$   
 $L = 90.13'$   
 $E = 5.19'$   
 PC STA 97+39.47  
 PT STA 98+29.60

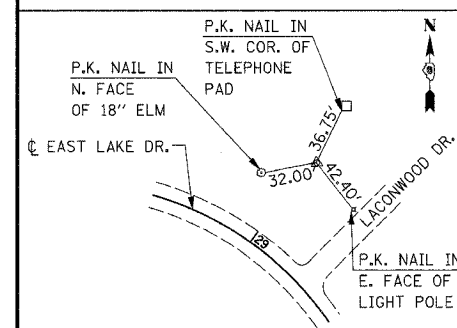
**CURVE DATA #5**  
 PI STA 103+07.24  
 $\Delta = 24^\circ 00' 37''$  (LT)  
 $D = 6^\circ 00' 00''$   
 $T = 203.07'$   
 $R = 954.93'$   
 $L = 400.17'$   
 $E = 21.35'$   
 PC STA 101+04.18  
 PT STA 105+04.35

$\text{CL STA } 56+62.00 \text{ PR EAST LAKE SHORE DRIVE} =$   
 $\text{CL STA } 99+88.00 \text{ PR PRIVATE SERVICE DRIVE}$

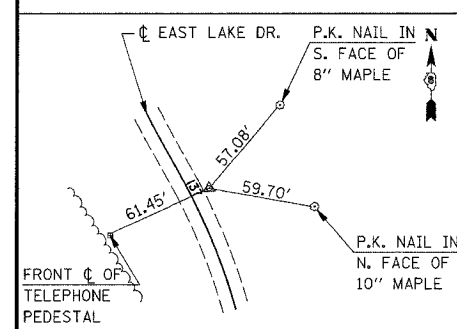
**CURVE DATA #4**  
 PI STA 59+14.02  
 $\Delta = 31^\circ 10' 40''$  (LT)  
 $D = 3^\circ 30' 00''$   
 $T = 456.72'$   
 $R = 1,637.02'$   
 $L = 890.79'$   
 $E = 62.52'$   
 PC STA 54+57.30  
 PT STA 63+48.09



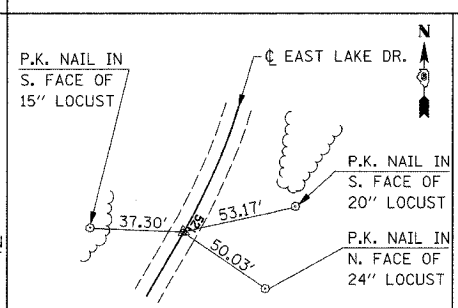
**PI STA 15+57.44**  
 SET P.K. NAIL  
 $N = 50226.1591 \quad E = 50449.4760$



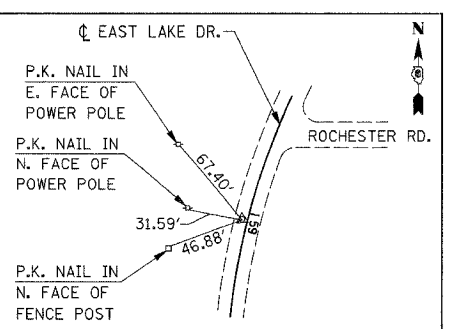
**PI STA 29+17.50**  
 SET 5/8" REBAR  
 $N = 49835.9297 \quad E = 51791.1224$



**PC STA 37+69.85**  
 SET 5/8" REBAR  
 $N = 49055.1308 \quad E = 52208.9627$



**PT STA 52+24.40**  
 SET P.K. NAIL  
 $N = 47662.4654 \quad E = 52186.1706$



**PI STA 59+14.02**  
 SET P.K. NAIL  
 $N = 47065.4076 \quad E = 51841.0614$

**ie consultants**  
 IE CONSULTANTS, INC.  
 6420 SOUTH SIXTH STREET  
 SPRINGFIELD, ILLINOIS 62712  
 TEL (217) 529-8027  
 FAX (217) 529-4543  
 IESPRINGFIELD@IE-CONSULTANTS.COM  
 WWW.IE-CONSULTANTS.COM

**ALIGNMENTS & TIES**

DESIGNED BY:	DRAWN BY:	CHECKED BY:	DATE:
JEB	AAD	CMS	4/4/08