

F.A.U.	SECTION	COUNTY	TOTAL SHEETS	SHEET NO.
7998	97-00030-06-WR	SANGAMON	117	24
FED. ROAD DIST. NO.		ILLINOIS	FED. AID PROJECT	

CITY OF SPRINGFIELD

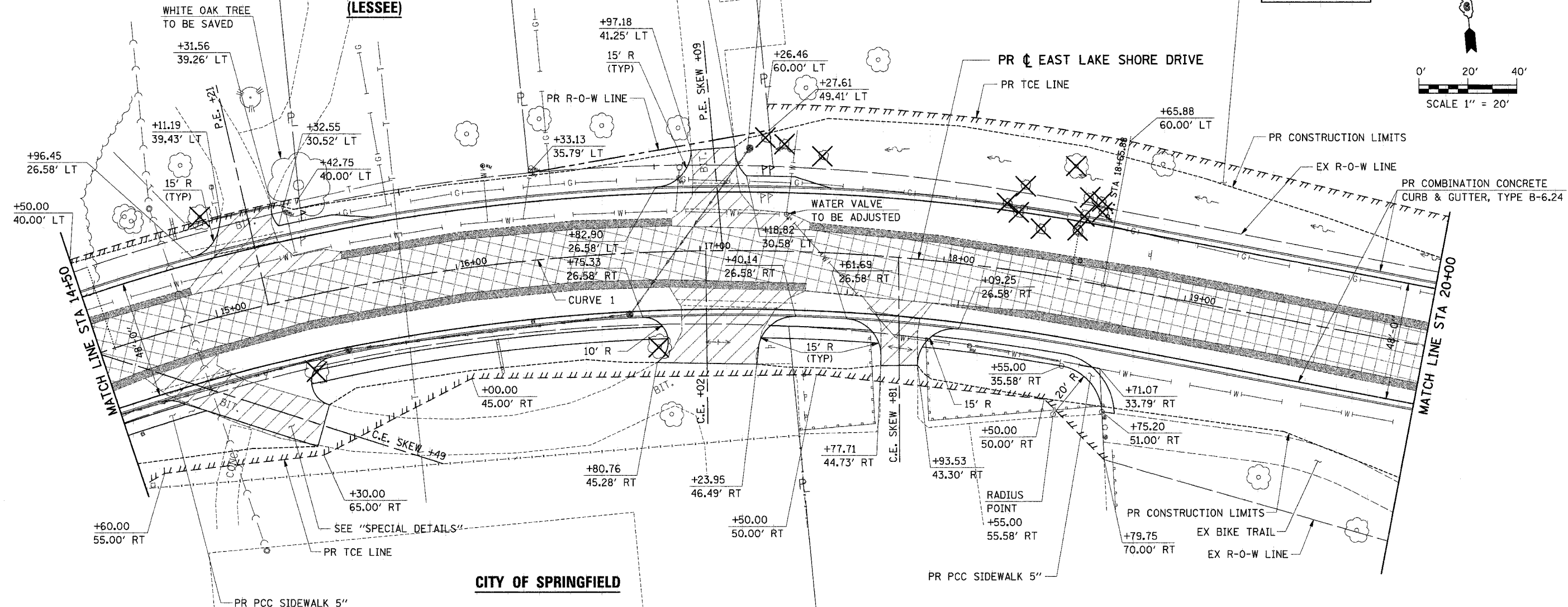
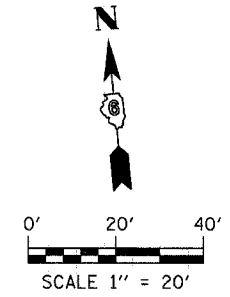
LAKE LEASE PROPERTY
JOSEPH A. & CAROL S. MULLEN
 (LESSEE)

LAKE LEASE PROPERTY
DONALD E. & GAYLE G. HIGHLEY
 (LESSEE)

CITY OF SPRINGFIELD

PARCEL 2.1-T.E.

PARCEL 3.0-R.O.W.



CITY OF SPRINGFIELD

CITY OF SPRINGFIELD

CURVE 1 DATA
 P.I. STA 15+57.44
 $\Delta = 45^\circ 47' 02''$ (RT)
 $D = 7^\circ 00' 00''$
 $T = 345.62'$
 $R = 818.51'$
 $L = 654.05'$
 $E = 69.98'$
 $e = 0.040'/'$
 $T.R = 46'$
 $S.E. RUN = 134'$
 P.C. STA 12+11.82
 P.T. STA 18+65.88

B.M. *2 STA 16+92, 34' LT
 CHISELED "+" ON BOLT ON FIRE
 HYDRANT N.E. SIDE OF ROAD
 ELEV. 590.75

LEGEND

- PR TREE REMOVAL
- PR HOT-MIX ASPHALT SURFACE REMOVAL (VARIABLE DEPTH)
- PR PAVEMENT REMOVAL
- PR DRIVEWAY PAVEMENT REMOVAL
- PR PAVED SHOULDER REMOVAL

ie CONSULTANTS, INC.
 6420 SOUTH SIXTH STREET
 SPRINGFIELD, ILLINOIS 62712
 TEL. (217) 629-8027
 FAX (217) 529-4549
 IESPRINGFIELD@IE-CONSULTANTS.COM
 WWW.IE-CONSULTANTS.COM

ROADWAY PLAN
STA 14+50 TO STA 20+00

DESIGNED BY: JEB	DRAWN BY: AAD	CHECKED BY: CMS	DATE: 4/4/08
---------------------	------------------	--------------------	-----------------

4/19/2008