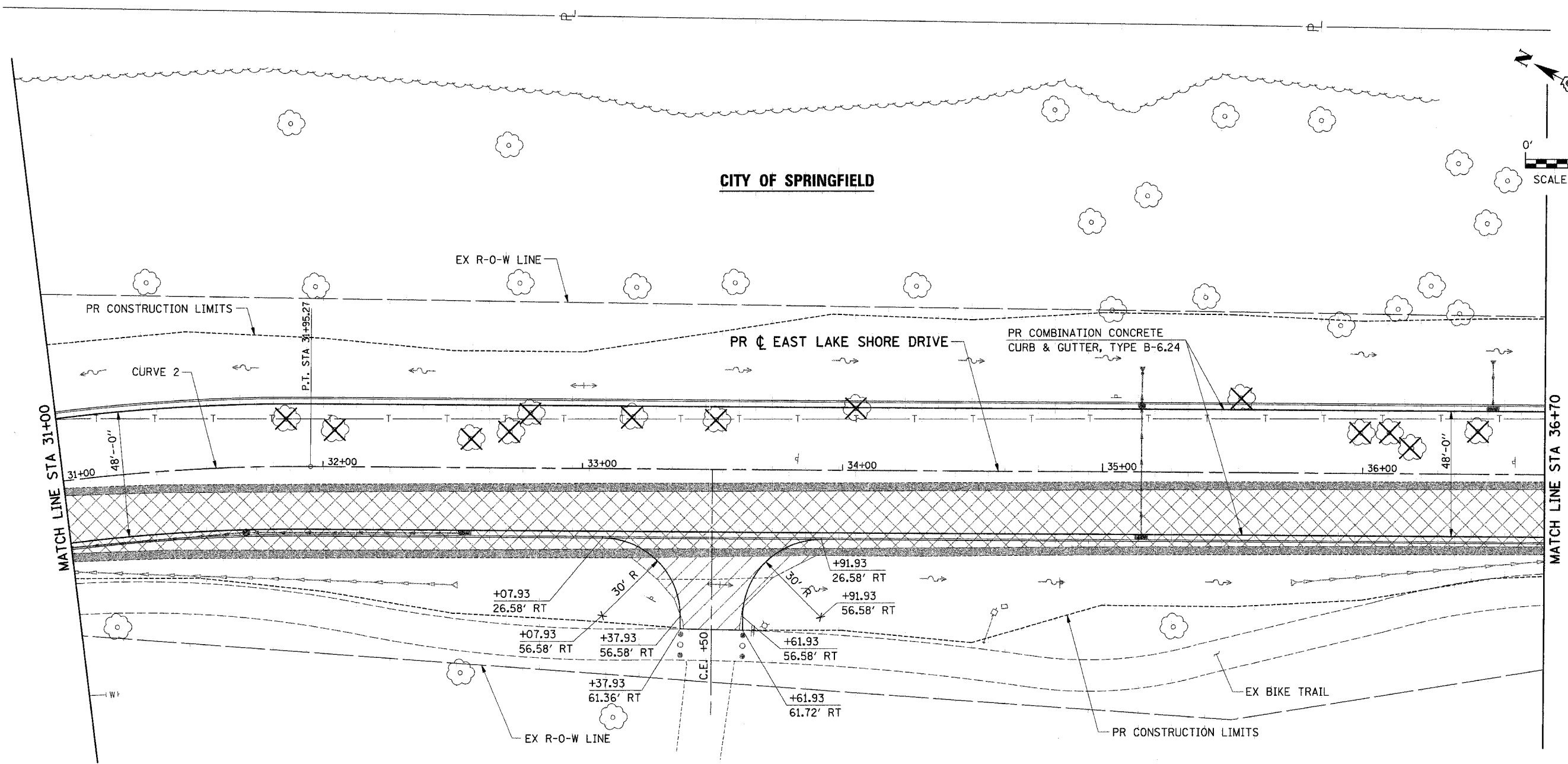
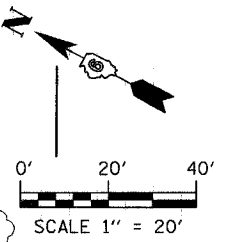



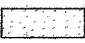
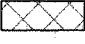
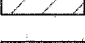

F.A.U.	SECTION	COUNTY	TOTAL SHEETS	SHEET NO.
7998	97-00030-06-WR	SANGAMON	117	30
FED. ROAD DIST. NO.		ILLINOIS	FED. AID PROJECT	



CURVE 2 DATA
 P.I. STA 29+17.50
 $\Delta = 45^\circ 37' 45''$ (RT)
 $D = 7^\circ 45' 00''$
 $T = 310.99'$
 $R = 739.30'$
 $L = 588.76'$
 $E = 62.75'$
 $e = 0.0401''$
 $T.R = 47'$
 $S.E. RUN = 135'$
 $P.C. STA 26+06.51$
 $P.T. STA 31+95.27$

CITY OF SPRINGFIELD

LEGEND

-  PR TREE REMOVAL
-  PR HOT-MIX ASPHALT SURFACE REMOVAL (VARIABLE DEPTH)
-  PR PAVEMENT REMOVAL
-  PR DRIVEWAY PAVEMENT REMOVAL
-  PR PAVED SHOULDER REMOVAL

ie consultants
 IE CONSULTANTS, INC.
 6420 SOUTH SIXTH STREET
 SPRINGFIELD, ILLINOIS 62712
 TEL. (217) 529-8027
 FAX (217) 529-4543
 IESPRINGFIELD@IE-CONSULTANTS.COM
 WWW.IE-CONSULTANTS.COM

ROADWAY PLAN			
STA 31+00 TO STA 36+70			
DESIGNED BY:	DRAWN BY:	CHECKED BY:	DATE:
JEB	AAD	CMS	4/4/08