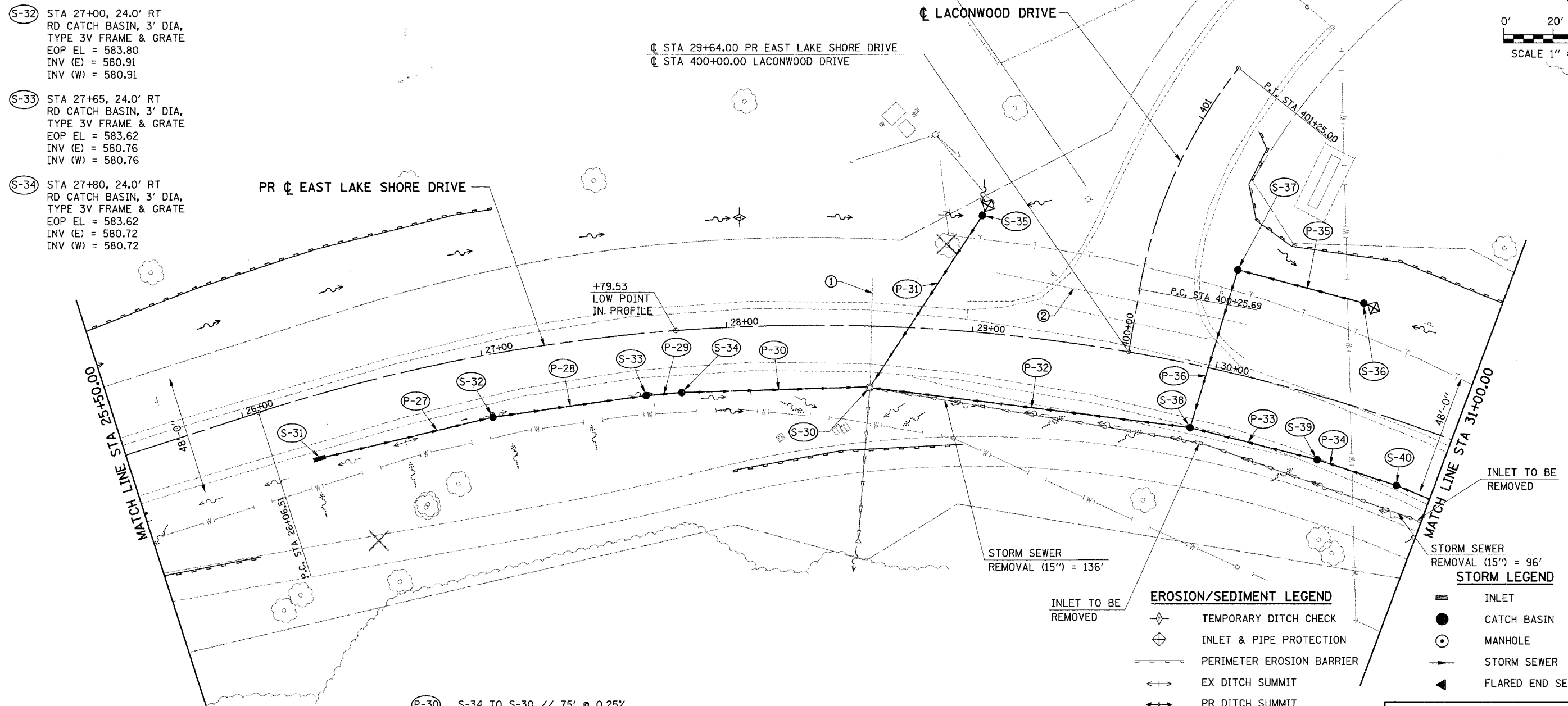
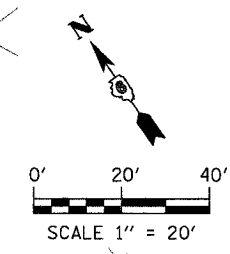


FAU	SECTION	COUNTY	TOTAL SHEETS	SHEET NO.
7998	97-00030-06-WR	SANGAMON	117	63
FED. ROAD DIST. NO.		ILLINOIS	FED. AID PROJECT	

- (S-30) STA 28+59, 24.0' RT MANHOLES TO BE ADJUSTED w/ NEW TYPE 3V FRAME & GRATE
EOP EL = 583.81
INV (NW,SE) = 580.53
INV (NE) = 580.10
EX INV (SW) = 580.00
- (S-31) STA 26+25, 24.0' RT INLETS, TYPE A, TYPE 3V FRAME & GRATE
EOP EL = 584.24
INV (E) = 581.09
- (S-32) STA 27+00, 24.0' RT RD CATCH BASIN, 3' DIA, TYPE 3V FRAME & GRATE
EOP EL = 583.80
INV (E) = 580.91
INV (W) = 580.91
- (S-33) STA 27+65, 24.0' RT RD CATCH BASIN, 3' DIA, TYPE 3V FRAME & GRATE
EOP EL = 583.62
INV (E) = 580.76
INV (W) = 580.76
- (S-34) STA 27+80, 24.0' RT RD CATCH BASIN, 3' DIA, TYPE 3V FRAME & GRATE
EOP EL = 583.62
INV (E) = 580.72
INV (W) = 580.72
- (S-35) STA 29+00, 46.2' LT CATCH BASIN, TYPE C (2' DIA) TYPE 8 GRATE
TOG EL = 583.70
INV = 582.00
- (S-36) STA 30+50, 43.8' LT CATCH BASIN, TYPE C (2' DIA) TYPE 8 GRATE
TOG EL = 585.00
INV = 583.30
- (S-37) STA 30+00, 38.7' LT RD CATCH BASIN, 3' DIA, TYPE 3V FRAME & GRATE
EOP EL = 586.50
INV (SW) = 582.70
INV (SE) = 582.80
- (S-38) STA 29+95, 24.0' RT RD MANHOLE, 4' DIA, TYPE 3V FRAME & GRATE
EOP EL = 584.61
INV (NW) = 581.40
INV (NE, SE) = 581.65
- (S-39) STA 30+50, 24.0' RT RD CATCH BASIN, 3' DIA, TYPE 3V FRAME & GRATE
EOP EL = 584.94
INV (W) = 582.16
INV (E) = 582.16
- (S-40) STA 30+85, 24.0' RT RD CATCH BASIN, 3' DIA, TYPE 3V FRAME & GRATE
EOP EL = 585.15
INV = 582.50

- NOTES:**
- ① PIPE CULVERT REMOVAL (C.M.P. 18") = 46'
 - ② PIPE CULVERT REMOVAL (R.C.P. 15") = 106'



- (P-27) S-31 TO S-32 // 72' @ 0.50%
STORM SEWERS, CLASS A, TYPE 1 12"
- (P-28) S-32 TO S-33 // 63' @ 0.25%
STORM SEWERS, CLASS A, TYPE 1 12"
- (P-29) S-33 TO S-34 // 15' @ 0.25%
STORM SEWERS, CLASS A, TYPE 1 12"
- (P-30) S-34 TO S-30 // 75' @ 0.25%
STORM SEWERS, CLASS A, TYPE 1 12"
- (P-31) S-35 TO S-30 // 80' @ 2.37%
STORM SEWERS, CLASS A, TYPE 1 12"
- (P-32) S-38 TO S-30 // 132' @ 0.66%
STORM SEWERS, CLASS A, TYPE 1 15"
- (P-33) S-39 TO S-38 // 53' @ 0.94%
STORM SEWERS, CLASS A, TYPE 1 18"
- (P-34) S-40 TO S-39 // 34' @ 1.00%
STORM SEWERS, CLASS A, TYPE 1 12"
- (P-35) S-36 TO S-37 // 50' @ 1.00%
STORM SEWERS, CLASS A, TYPE 1 12"
- (P-36) S-37 TO S-38 // 66' @ 1.59%
STORM SEWERS, CLASS A, TYPE 1 12"

- EROSION/SEDIMENT LEGEND**
- ◇ TEMPORARY DITCH CHECK
 - ◇ INLET & PIPE PROTECTION
 - PERIMETER EROSION BARRIER
 - ↔ EX DITCH SUMMIT
 - ↔ PR DITCH SUMMIT
 - EX FLOW LINE
 - PR FLOW LINE
 - PR SWALE
 - EX SHEET FLOW
 - PR SHEET FLOW
 - PR RIP RAP

- STORM SEWER REMOVAL (15") = 96'**
- STORM LEGEND**
- INLET
 - CATCH BASIN
 - MANHOLE
 - STORM SEWER
 - ▲ FLARED END SECTION

ie consultants

IE CONSULTANTS, INC.
8420 SOUTH SIXTH STREET
SPRINGFIELD, ILLINOIS 62712
TEL. (217) 529-8027
FAX (217) 529-4643
IESPRINGFIELD@IE-CONSULTANTS.COM
WWW.IE-CONSULTANTS.COM

DRAINAGE PLAN
STA 25+50 TO STA 31+00

DESIGNED BY: JEB	DRAWN BY: AAD	CHECKED BY: CMS	DATE: 4/4/08
---------------------	------------------	--------------------	-----------------