

| F.A.P. RTE. | SECTION | COUNTY | TOTAL SHEETS | SHEET NO. |
|---------------------|--------------|----------|------------------|-----------|
| 781 | 1YRS, 2ZRS-1 | CRAWFORD | 378 | 1 |
| STA. TO STA. | | | | |
| FED. ROAD DIST. NO. | | ILLINOIS | FED. AID PROJECT | |

STATE OF ILLINOIS
DEPARTMENT OF TRANSPORTATION
DIVISION OF HIGHWAYS

**PROPOSED
HIGHWAY PLANS**

F.A.P. ROUTE 781 (IL. ROUTE 33)
SECTION 1YRS, 2ZRS-1
PROJECT : F-0781(029)
CRAWFORD COUNTY
C-97-007-98

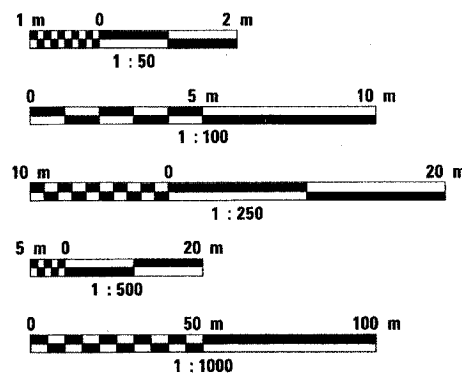
Project Engineer: Mark Daugherty
Telephone: (217) 342-8341

FOR INDEX OF SHEETS, SEE SHEET NO. 2
FOR THE LIST OF APPLICABLE IDOT HIGHWAY STANDARDS, SEE SHEET NO. 2

| | | |
|--|--------------|--------------------------|
| STRUCTURAL DESIGN TRAFFIC: | YEAR | 2019 |
| PV = | 8173 | SU = 145 MU = 377 |
| ROAD/STREET CLASSIFICATION: | CLASS | II |
| PERCENT OF STRUCTURAL DESIGN TRAFFIC IN DESIGN LANE: | | |
| P = | 50 | S = 50 M = 50 |
| TRAFFIC FACTOR: | Actual TF = | 1.63 |
| | Minimum TF = | 3.81 |
| SUBGRADE SUPPORT RATING: | | |
| SSR = | Poor | (STA. 13+143 TO 13+750) |
| SSR = | | (STA. _____ TO _____) |

DESIGN DESIGNATION:
8695(19) Arterial 3.81 (FD-20)
2019 ADT = 8695

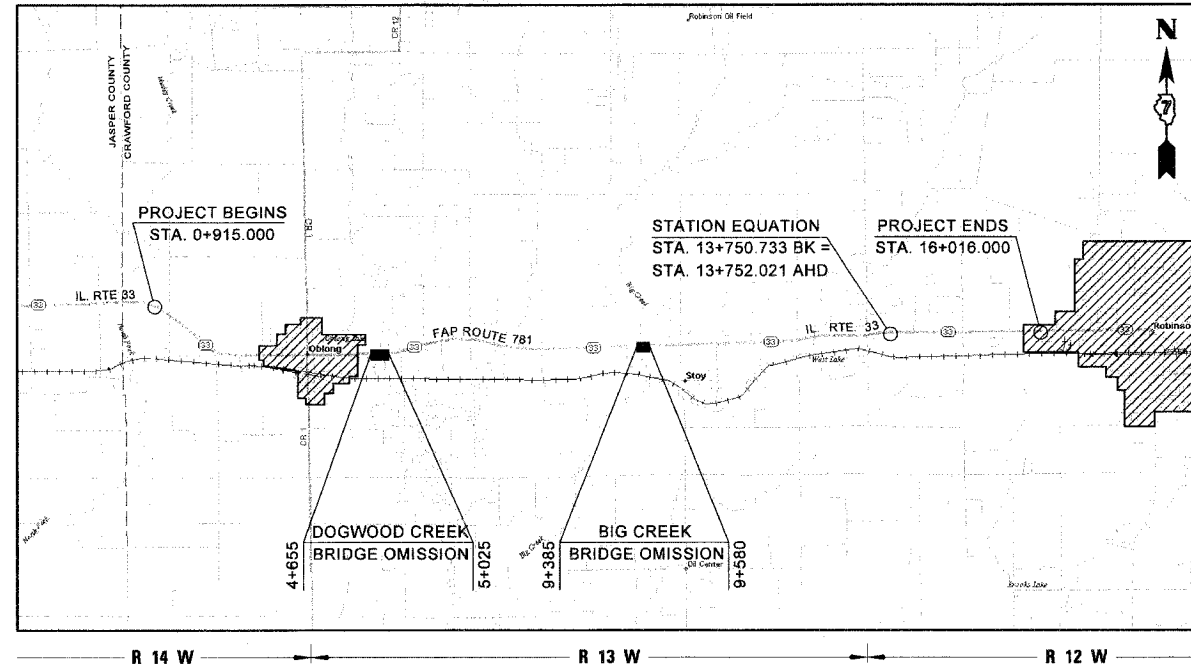
METRIC RATIOS



FULL SIZE PLANS HAVE BEEN PREPARED USING STANDARD ENGINEERING SCALES. REDUCED SIZED PLANS WILL NOT CONFORM TO STANDARD SCALES. IN MAKING MEASUREMENTS ON REDUCED PLANS, THE ABOVE SCALES MAY BE USED.

J.U.L.I.E.
JOINT UTILITY LOCATION INFORMATION FOR EXCAVATION
1-800-892-0123

CONTRACT NO. 94533



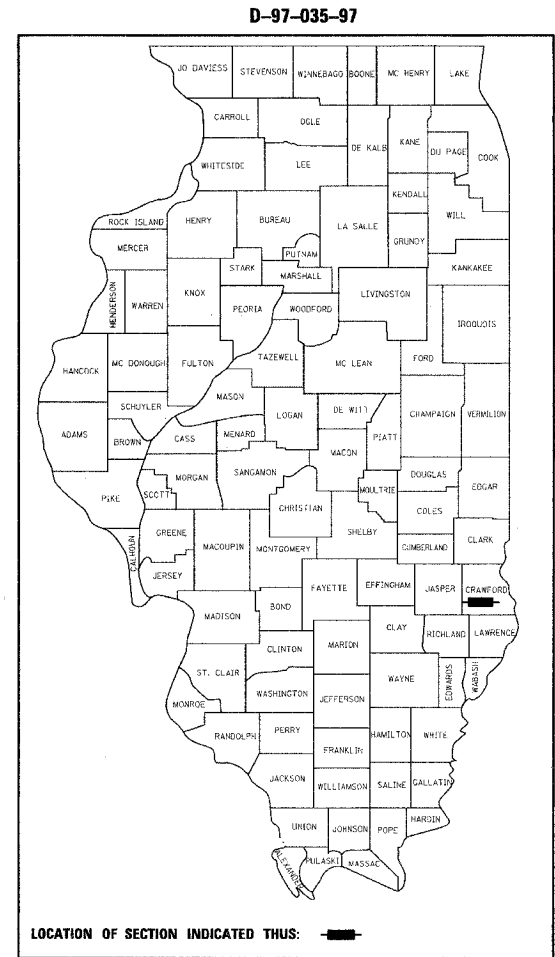
LOCATION MAP
SCALE 1:80,000

GROSS LENGTH OF IMPROVEMENT = 15,101.000 METERS = 15.101 KILOMETERS
STATION EQUATION OMISSION = 1,288 METERS = 0.001 KILOMETERS
ROAD AND BRIDGE OMISSIONS = 585,000 METERS = 0.585 KILOMETERS
NET LENGTH OF IMPROVEMENT = 14,534.712 METERS = 14.535 KILOMETERS

PLANS PREPARED BY



HENRY, MEISENHEIMER & GENDE, INC.
ENGINEERS
CARLYLE, ILLINOIS 62231
www.hmgengineers.com
(618) 594-3711 Fax (618) 594-8217



STATE OF ILLINOIS
DEPARTMENT OF TRANSPORTATION
DIVISION OF HIGHWAYS

SUBMITTED March 21, 2008
Christine M. Reed
DEPUTY DIRECTOR OF HIGHWAYS, REGION ENGINEER

May 9, 2008
Eric E. Narn
ENGINEER OF DESIGN AND ENVIRONMENT

May 9, 2008
Christine M. Reed
DIRECTOR OF HIGHWAYS, CHIEF ENGINEER

**PRINTED BY THE AUTHORITY
OF THE STATE OF ILLINOIS**

PLOT DATE = 3/28/2008
FILE NAME = H:\4428\78281\cover.dgn

HMG JOB NO. 4450