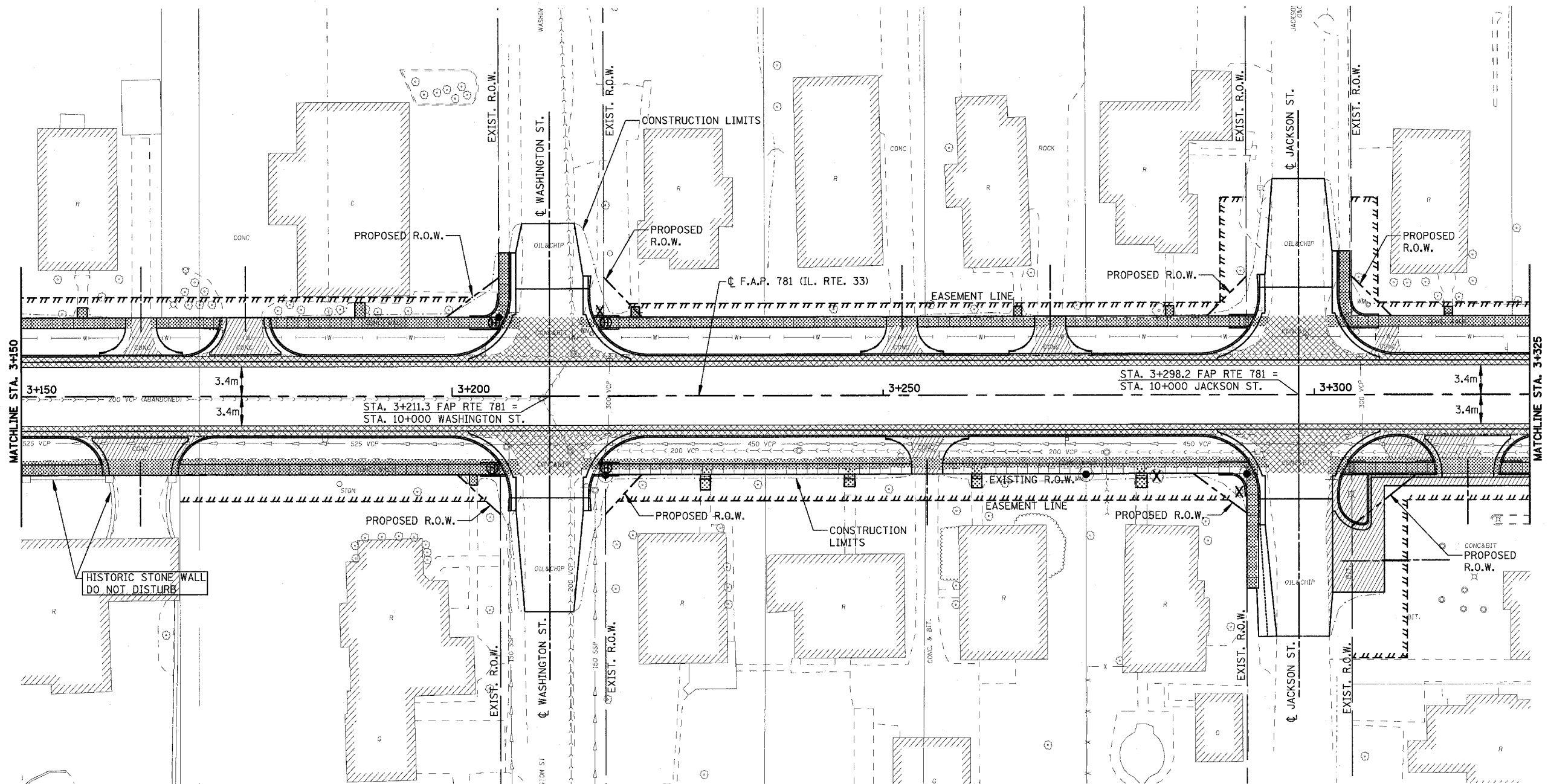
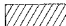


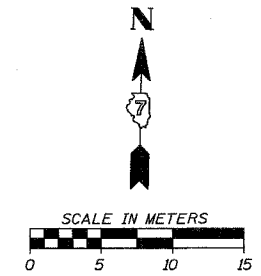


| F.A.P. RTE.         | SECTION      | COUNTY        | TOTAL SHEETS     | SHEET NO. |
|---------------------|--------------|---------------|------------------|-----------|
| 781                 | 1YRS, 2ZRS-1 | CRAWFORD      | 378              | 51        |
| STA. 3+150          |              | TO STA. 3+325 |                  |           |
| FED. ROAD DIST. NO. |              | ILLINOIS      | FED. AID PROJECT |           |



**LEGEND**

-  DRIVEWAY PAVEMENT REMOVAL (INCLUDES ALL MATERIAL ENCOUNTERED)
-  PAVEMENT REMOVAL (INCLUDES ALL MATERIAL ENCOUNTERED)
-  SIDEWALK REMOVAL (INCLUDES STEPS)



| REVISIONS |      |
|-----------|------|
| NAME      | DATE |
|           |      |
|           |      |
|           |      |
|           |      |
|           |      |

ILLINOIS DEPARTMENT OF TRANSPORTATION

**REMOVAL ITEMS**

SCALE \_\_\_\_\_ DRAWN BY EDW  
 DATE APRIL 18, 2008 CHECKED BY RGH

PLOT DATE = 4/18/2008  
FILE NAME = H:\4420\70051\_REM250\_04.dgn

H. M. & G. NO. 4420