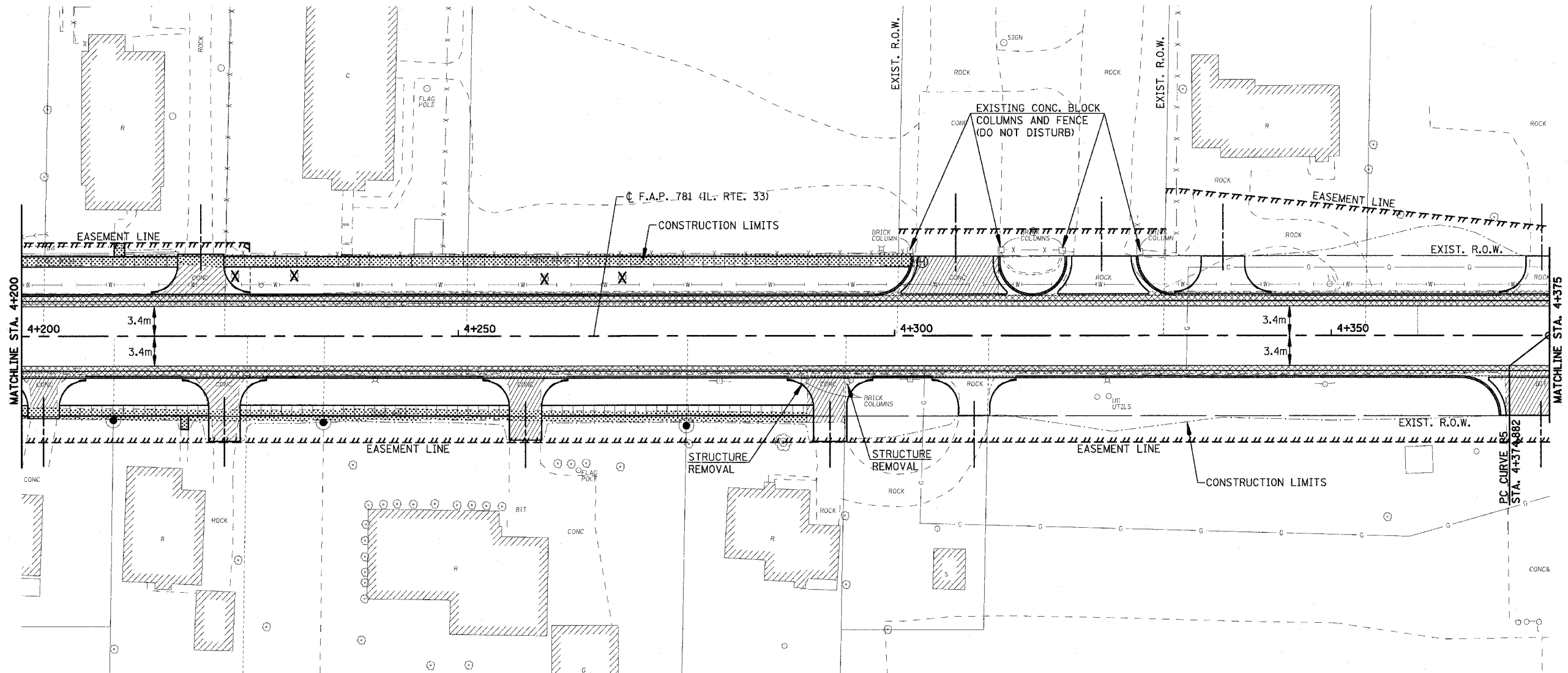


F.A.P. RTE.	SECTION	COUNTY	TOTAL SHEETS	SHEET NO.
781	1YRS, 2ZRS-1	CRAWFORD	378	57
STA. 4+200		TO STA. 4+375		
FED. ROAD DIST. NO.	ILLINOIS	FED. AID PROJECT		



LEGEND

- DRIVEWAY PAVEMENT REMOVAL (INCLUDES ALL MATERIAL ENCOUNTERED)
- PAVEMENT REMOVAL (INCLUDES ALL MATERIAL ENCOUNTERED)
- SIDEWALK REMOVAL (INCLUDES STEPS)



REVISIONS	
NAME	DATE

ILLINOIS DEPARTMENT OF TRANSPORTATION

REMOVAL ITEMS

SCALE
DATE APRIL 18, 2008
DRAWN BY EDW
CHECKED BY RGH

PLOT DATE = 4/18/2008
FILE NAME = H:\4428\76057_REN250_1B.dgn

H. M. & G. NO. 4420