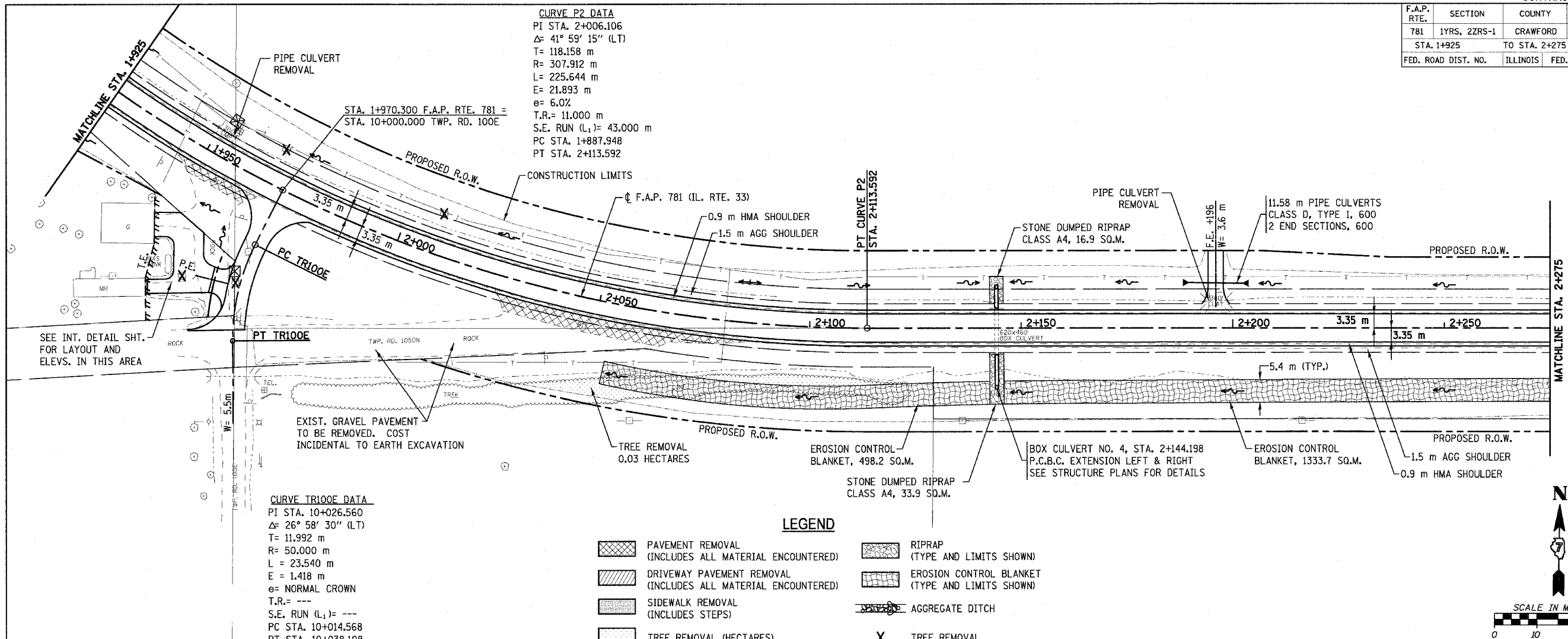


F.A.P. RTE.	SECTION	COUNTY	TOTAL SHEETS	SHEET NO.
781	1YRS, 2ZRS-1	CRAWFORD	378	62
STA. 1+925		TO STA. 2+275		
FED. ROAD DIST. NO.		ILLINOIS	FED. AID PROJECT	

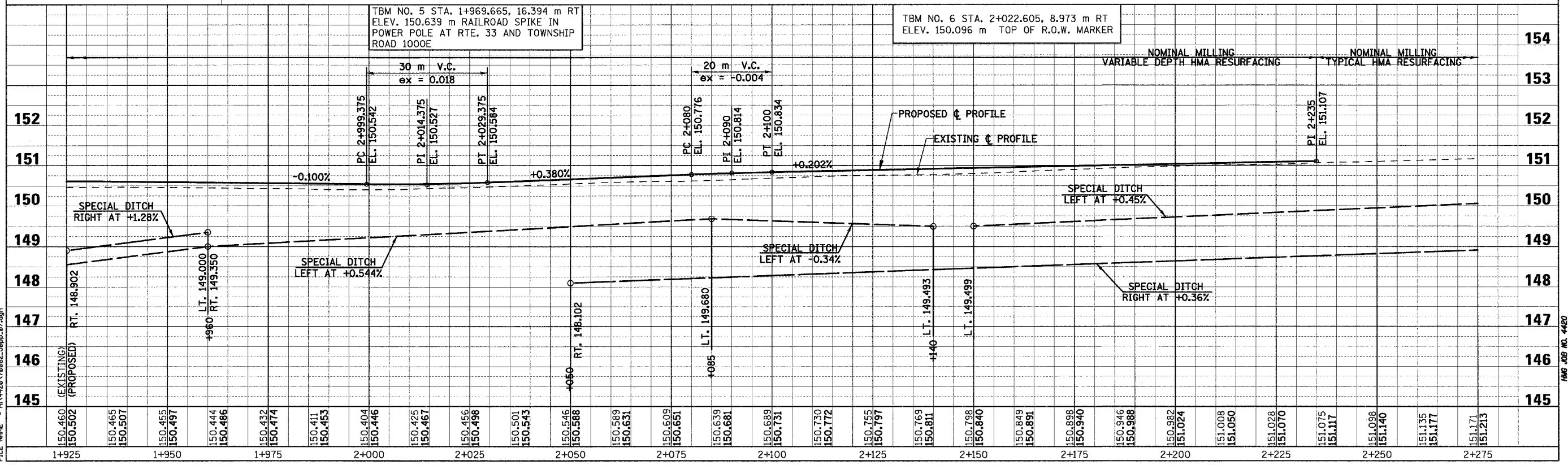
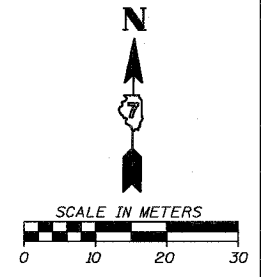
CURVE P2 DATA
 PI STA. 2+006.106
 $\Delta = 41^\circ 59' 15''$ (LT)
 T = 118.158 m
 R = 307.912 m
 L = 225.644 m
 E = 21.893 m
 $e = 6.0\%$
 T.R. = 11.000 m
 S.E. RUN (L_1) = 43.000 m
 PC STA. 1+887.948
 PT STA. 2+113.592

CURVE TR100E DATA
 PI STA. 10+026.560
 $\Delta = 26^\circ 58' 30''$ (LT)
 T = 11.992 m
 R = 50.000 m
 L = 23.540 m
 E = 1.418 m
 $e =$ NORMAL CROWN
 T.R. = ---
 S.E. RUN (L_1) = ---
 PC STA. 10+014.568
 PT STA. 10+038.108



LEGEND

- PAVEMENT REMOVAL (INCLUDES ALL MATERIAL ENCOUNTERED)
- DRIVEWAY PAVEMENT REMOVAL (INCLUDES ALL MATERIAL ENCOUNTERED)
- SIDEWALK REMOVAL (INCLUDES STEPS)
- TREE REMOVAL (HECTARES)
- RIPRAP (TYPE AND LIMITS SHOWN)
- EROSION CONTROL BLANKET (TYPE AND LIMITS SHOWN)
- AGGREGATE DITCH
- TREE REMOVAL



PLOT DATE = 4/18/2008
 FILE NAME = H:\4428\78862_90pp-87.dgn

Sheet: 7
 Angle: 350.8670
 Chain: P_IL33

HMG JOB NO. 4480