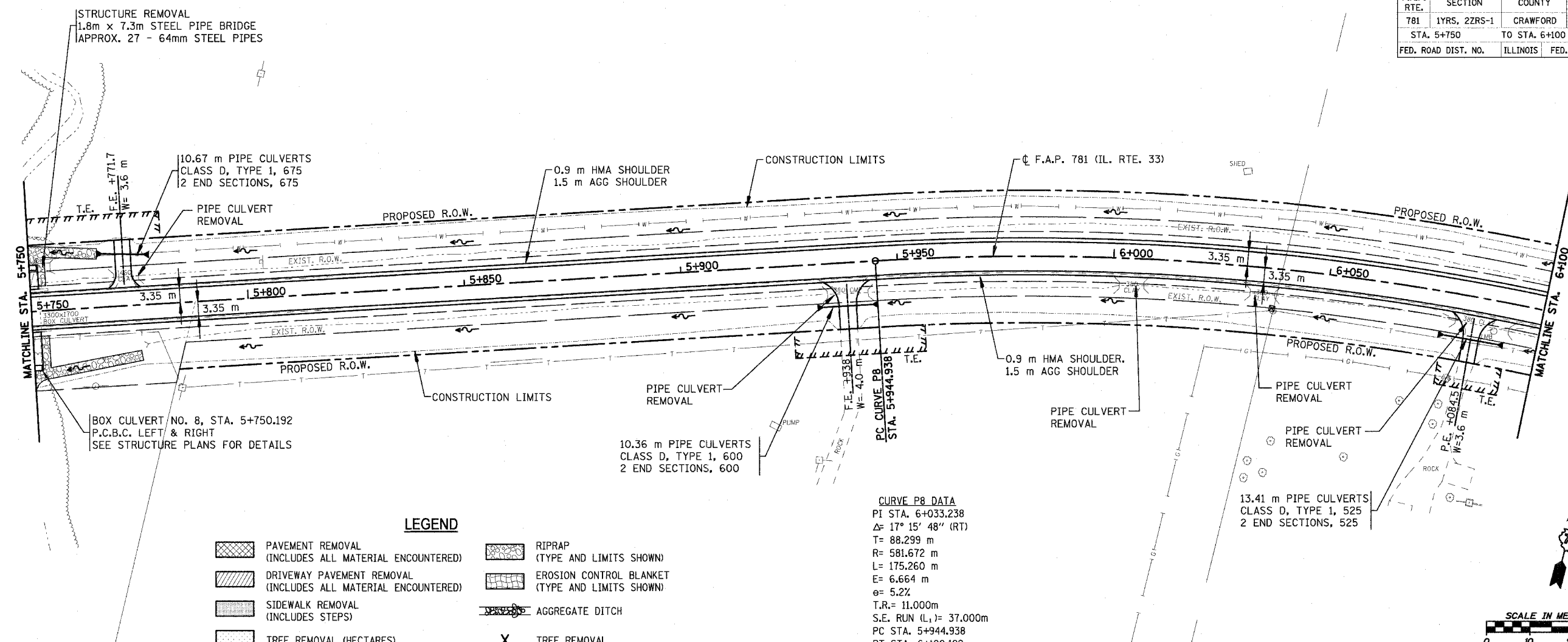


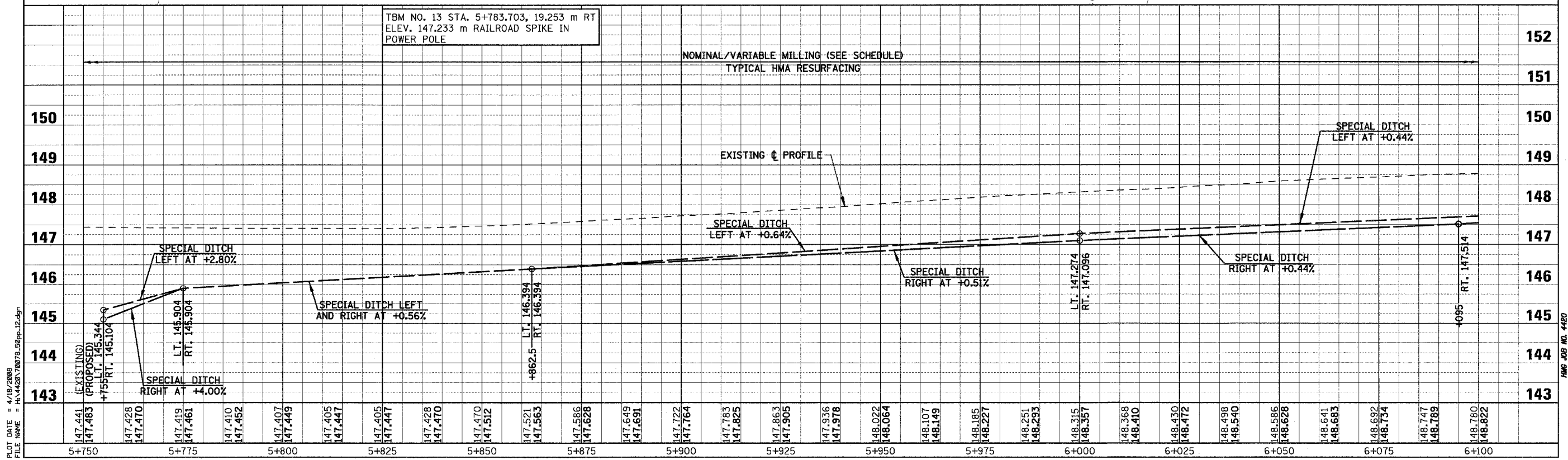
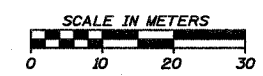
F.A.P. RTE.	SECTION	COUNTY	TOTAL SHEETS	SHEET NO.
781	1YRS, 2ZRS-1	CRAWFORD	378	78
STA. 5+750		TO STA. 6+100		
FED. ROAD DIST. NO.	ILLINOIS	FED. AID PROJECT		



**LEGEND**

	PAVEMENT REMOVAL (INCLUDES ALL MATERIAL ENCOUNTERED)		RIPRAP (TYPE AND LIMITS SHOWN)
	DRIVEWAY PAVEMENT REMOVAL (INCLUDES ALL MATERIAL ENCOUNTERED)		EROSION CONTROL BLANKET (TYPE AND LIMITS SHOWN)
	SIDEWALK REMOVAL (INCLUDES STEPS)		AGGREGATE DITCH
	TREE REMOVAL (HECTARES)		TREE REMOVAL

**CURVE P8 DATA**  
 PI STA. 6+033.238  
 Δ= 17° 15' 48" (RT)  
 T= 88.299 m  
 R= 581.672 m  
 L= 175.260 m  
 E= 6.664 m  
 e= 5.2%  
 T.R.= 11.000m  
 S.E. RUN (L<sub>1</sub>)= 37.000m  
 PC STA. 5+944.938  
 PT STA. 6+120.199



PLOT DATE = 4/18/2008  
 FILE NAME = H:\4428\78078\_106pp-12.dgn